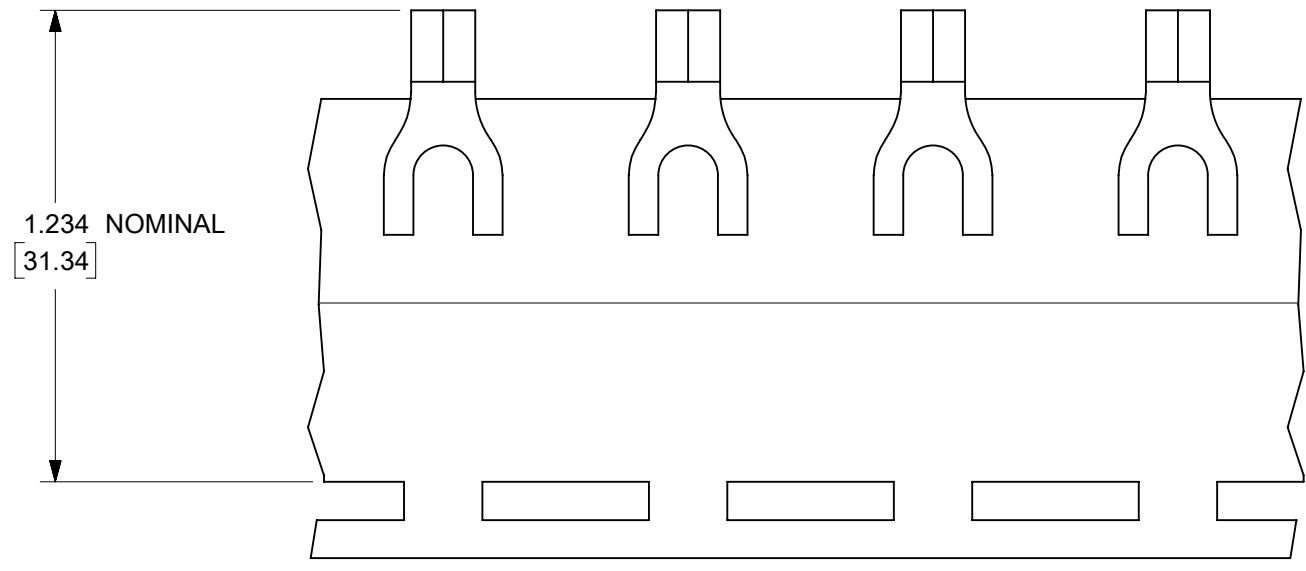
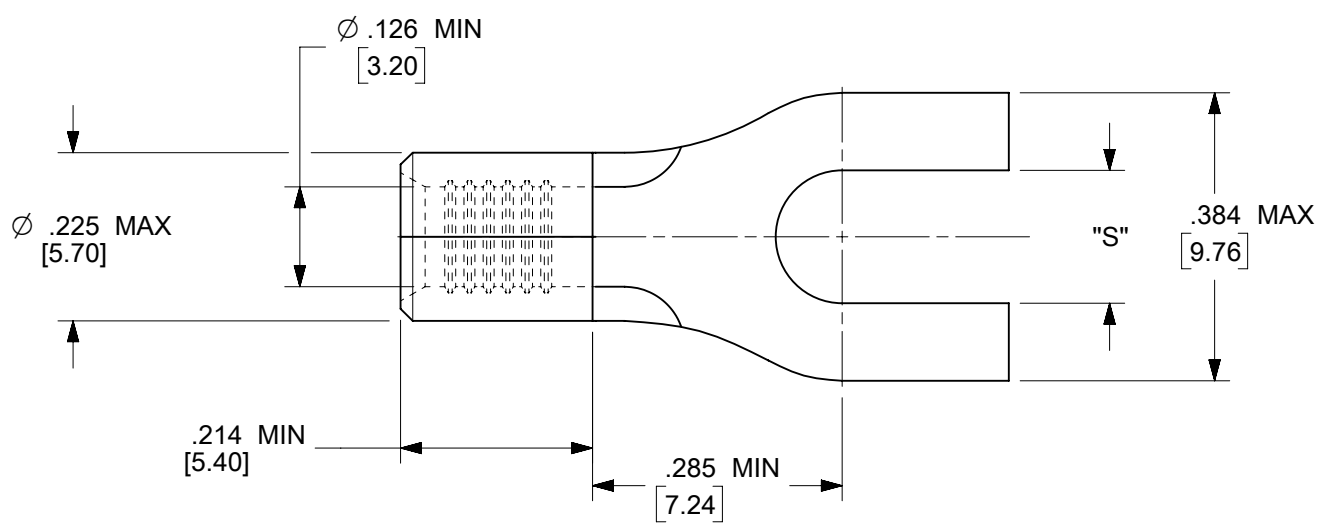
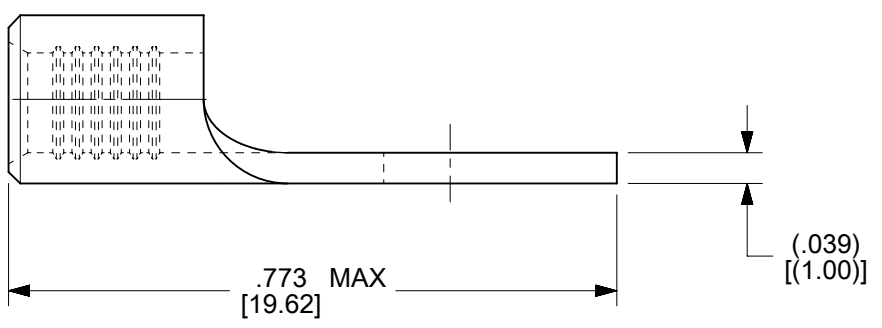


MATERIAL NO.	ENG. NO.	STUD SIZE	"S" MAX	DESCRIPTION
192030382	C-S-141-10	10	.215/5.46	LOOSE
192030477	19203-0477	10	.215/5.46	TAPE



PARTS ON TAPE



- NOTES:
1. MATERIAL: STEEL
 2. FINISH: NICKEL PLATED WITH OPTIONAL COPPER FLASH UNDERPLATING, IS ALLOWED FOR IMPROVED ADHESION.
 3. WIRE SIZE: 12-10 AWG (4.0-6.0 MM²)
 4. PART IS ROHS COMPLIANT.
 5. AMBIENT OPERATING TEMPERATURE UP TO 900 °F (483 °C).

THIS DRAWING CONTAINS INFORMATION THAT IS PROPRIETARY TO MOLEX ELECTRONIC TECHNOLOGIES, LLC AND SHOULD NOT BE USED WITHOUT WRITTEN PERMISSION										
FUNCTIONAL SYMBOLS	FA = 0	IN/MM	SCALE	CURRENT REV DESC: REMASTERED IN ECTR AND UPDATED NOTE						
	FC = 0	1:1	GENERAL TOLERANCES (UNLESS SPECIFIED)							
DIVISIONAL SYMBOLS	FD = 0	4 PLACES	±	MM	±	INCH	EC NO: 708789			
		3 PLACES	±		±		DRWN: PAWANC 2022/05/12			
		2 PLACES	±		±		CHKD: DMYRICK 2022/06/01			
		1 PLACE	±		±		APPR: JMACNEIL 2022/06/02			
		0 PLACES	±		±		INITIAL REVISION: DRWN: DMYRICK 2005/04/07			
ANGULAR TOL		±	°	APPR: RDEROSS 2005/04/07		DOCUMENT NUMBER		DOC TYPE	DOC PART	REVISION
DRAFT WHERE APPLICABLE MUST REMAIN WITHIN DIMENSIONS		THIRD ANGLE PROJECTION		DRAWING	SERIES	MATERIAL NUMBER	CUSTOMER		SHEET NUMBER	
		B-SIZE		19203	SEE CHART	GENERAL MARKET		1 OF 1		

molex

SPADE TONGUE TERMINAL,
12-10 AWG, KRIMPTITE, 900 DEG F (483 DEG C)

PRODUCT CUSTOMER DRAWING