

S18 3 09 T A1 2 2 **

SERIES
S18= INTERNAL THREAD FORM A

POLES
2= 2 POLE & 3= 3 POLE

THREAD
09= PG9, 11= PG11, M6=M16x1.5, M0= M20x1.5, 12= 1/2" GAS 13= 1/2" NPTF

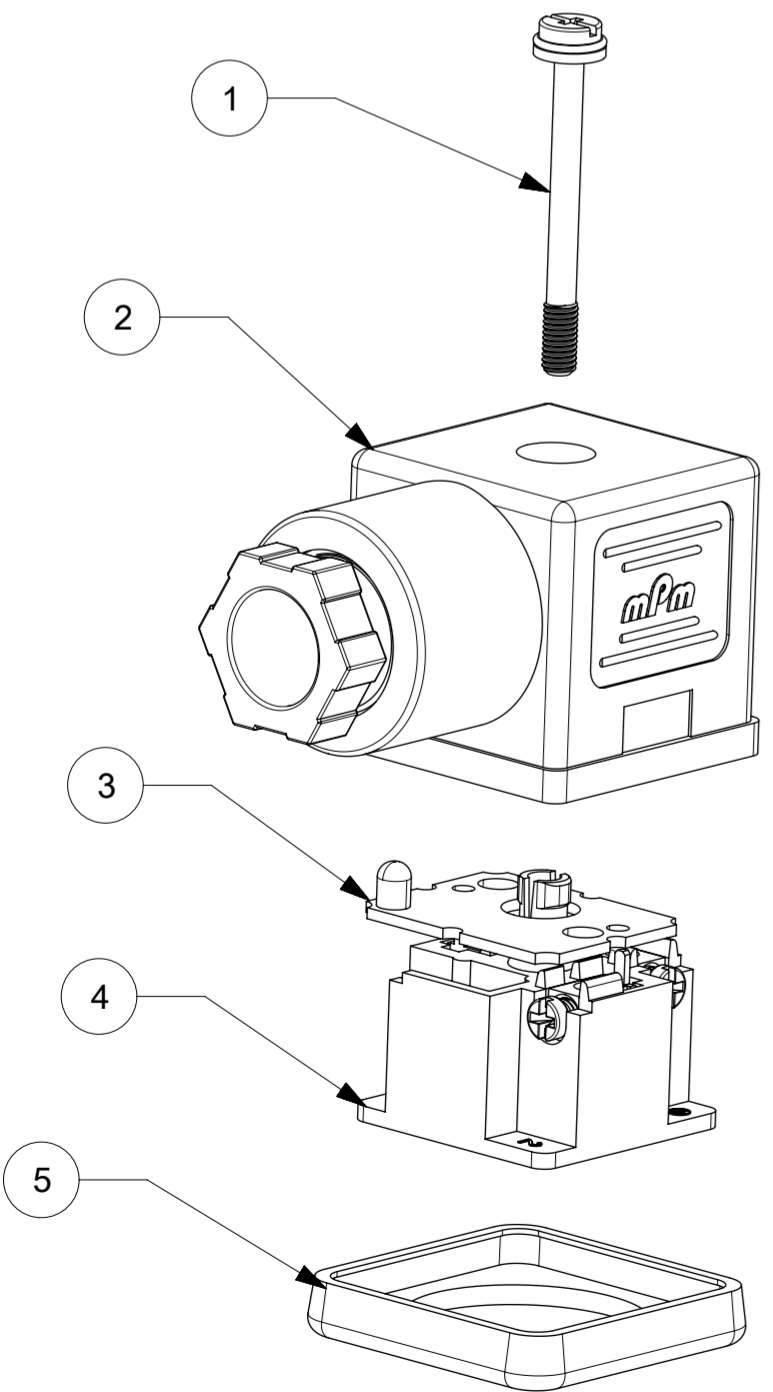
MATERIAL AND HOUSING COLOUR
G= PA6 GRAY, N= PA6 BLACK, W= PA6 BLACK V0, T= PA12 TRANSPARENT, B= PA6 WHITE

CIRCUIT
SEE DETAILS IN CATALOGUE

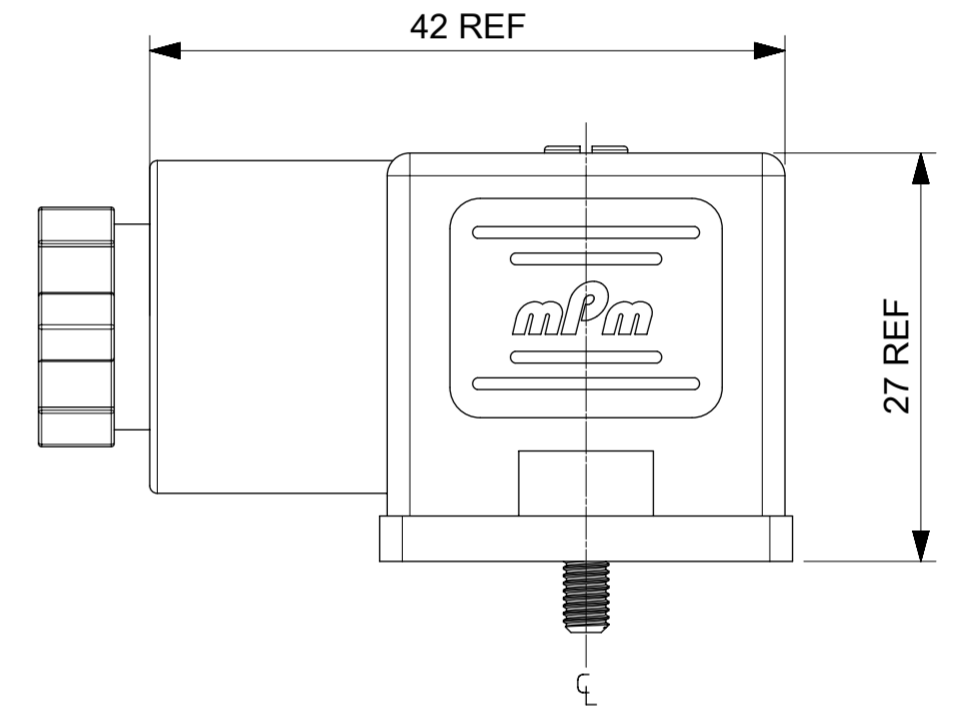
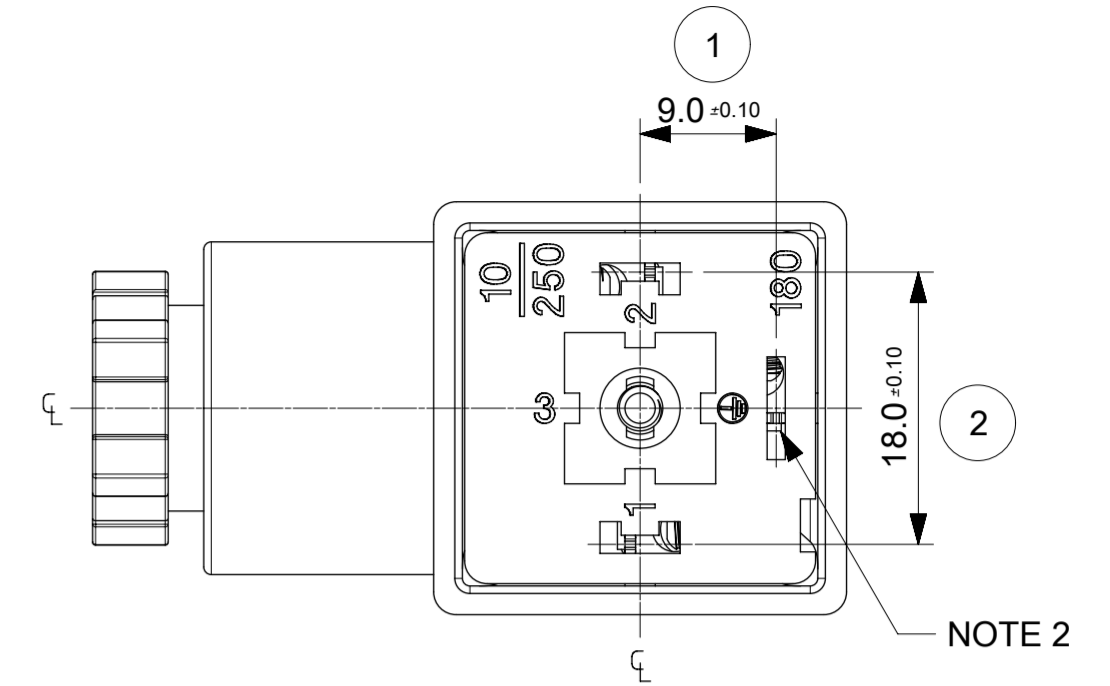
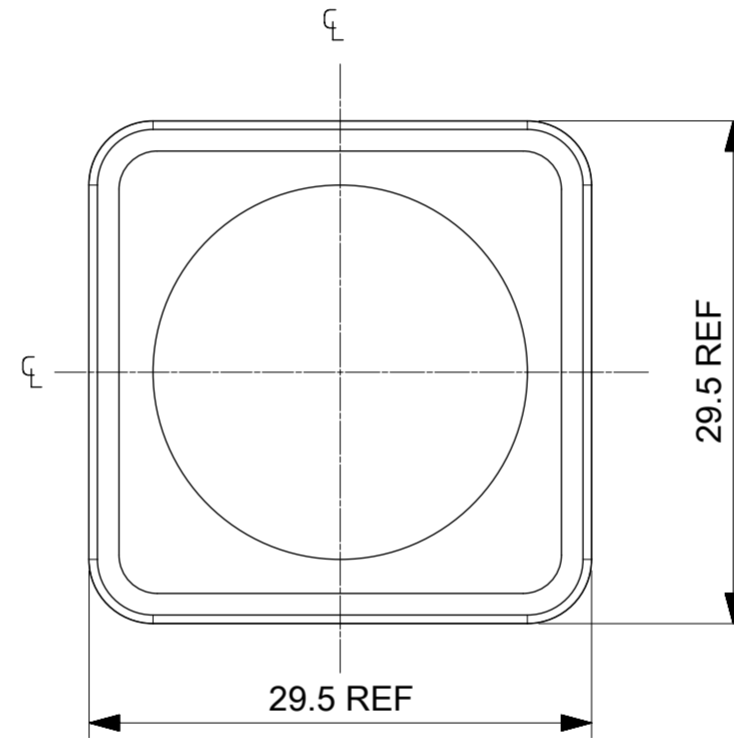
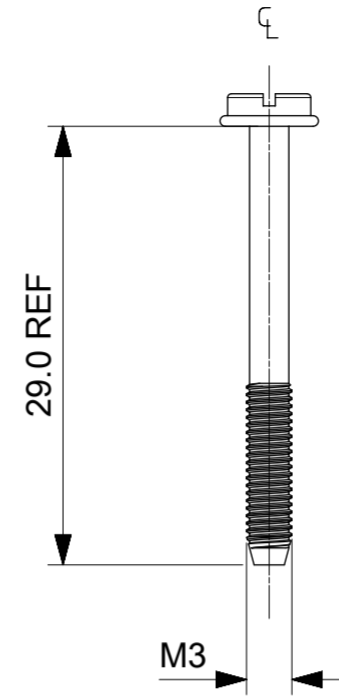
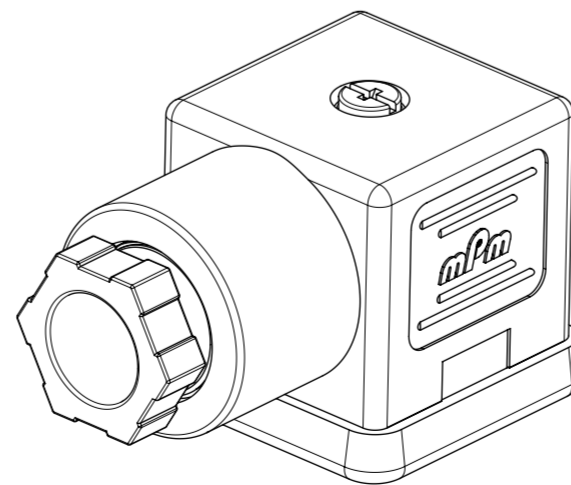
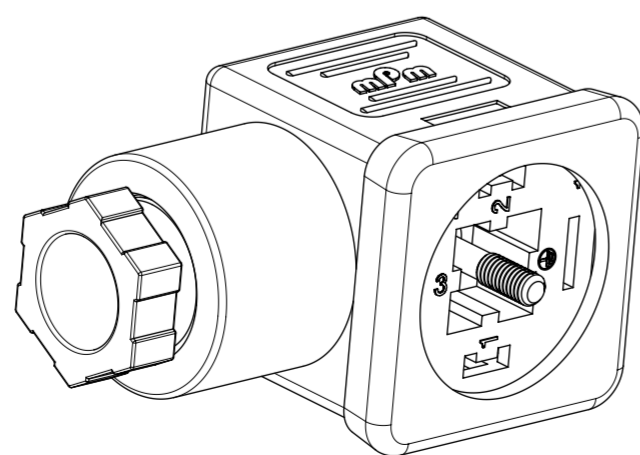
VOLTAGE
SEE DETAILS IN CATALOGUE

SCREW AND GASKET
1= NBR PROFILE GASKET & SCREW
2= NBR FLAT GASKET & SCREW
3= WHITE SILICON PROFILE GASKET & SCREW
4= WHITE SILICON FLAT GASKET & SCREW
A= NBR PROFILE GASKET & SCREW +2mm
B= NBR FLAT GASKET & SCREW +2mm
P= SCREW WITH GROMMET (IP67) & NBR INTEGRATED GASKET ASSEMBLED

NON STANDARD COMPONENTS
14= PACKED IN NEUTRAL BAG
23= FULLY MOUNTED
54= WITH PIN 3 AS EARTH
65= SPECIAL GROMMET
67= NEUTRAL PACKAGING
84= TAMPO PRINTING ON DIODE
3F= 24DC W/O TAMPO PRINTING
5J= BOXES OF 100
5N= PACKED IN BOXES OF 200
6U= GI BY500-800 DIODE
AF= CENTRE SCREW MOUNTED
AG= DIODE IN4948
P7= IP67 COMPLIANT
SA= UL LISTED PART
CZ= GROMMET 4 DISCRETE WIRES



| ITEM | DESCRIPTION |
|------|-----------------|
| 1 | SCREW |
| 2 | COVER ASSEMBLY |
| 3 | PCB |
| 4 | INSERT ASSEMBLY |
| 5 | GASKET |



NOTES

- PLEASE SEE EXCEL SHEET 1210640002_PDP FOR CURRENTLY CONFIGURED PART NUMBERS.
FOR SPECIFIC PART NUMBERS PLEASE CONTACT SALES OR CONSULT THE INTELLIGENT PART NUMBER ON THE TOP LEFT OF THIS PAGE.
- EARTH POSITION SHOWN, H12.
- FOR PACKAGING SEE PACKAGING SPEC PK-121064-S18
- PRODUCT SPEC: SEE PS-121201-001

LAST INSPECTION NUMBER 2

| | | | | | | | | | | | | |
|-----------------|--|-----------------|--|--|--|-----------------|--|------------------------|--|--------------------------|--|--|
| 2016/12/16 | | 2016/12/22 | | GENERAL TOLERANCES (UNLESS SPECIFIED) | | DIMENSION UNITS | | SCALE | | | | |
| AE | | REV | | 4 PLACES ± | | MM | | 1.5:1 | | | | |
| DRWN: TCLEARY | | CHKD: STGRIFFIN | | 3 PLACES ± | | DRWN BY | | DATE | | PRODUCT CUSTOMER DRAWING | | |
| APPR: STGRIFFIN | | APPR BY | | 2 PLACES ± 0.1 | | BCAFFREY | | 2016/04/11 | | SERIES | | |
| | | | | 1 PLACE ± 0.2 | | TCLEARY | | 2016/12/16 | | MATERIAL NUMBER | | |
| | | | | 0 PLACES ± | | STGRIFFIN | | 2016/04/12 | | CUSTOMER | | |
| | | | | DRAFT WHERE APPLICABLE MUST REMAIN WITHIN DIMENSIONS | | DRAWING SIZE | | THIRD ANGLE PROJECTION | | 121064 | | |
| | | | | | | A2 | | | | SEE 1210640002_PDP | | |
| | | | | | | | | | | GENERAL MARKET | | |
| | | | | | | | | | | DOCUMENT NUMBER | | |
| | | | | | | | | | | SD-121064-002 | | |
| | | | | | | | | | | DOC TYPE | | |
| | | | | | | | | | | PSD | | |
| | | | | | | | | | | DOC PART | | |
| | | | | | | | | | | 000 | | |
| | | | | | | | | | | SHEET NUMBER | | |
| | | | | | | | | | | 1 OF 1 | | |