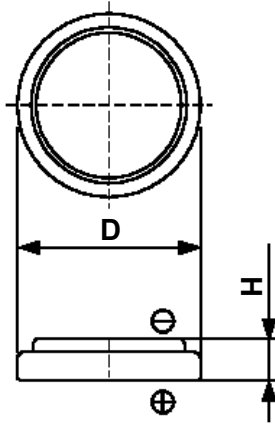


# Cell Type CR2032 Specifications

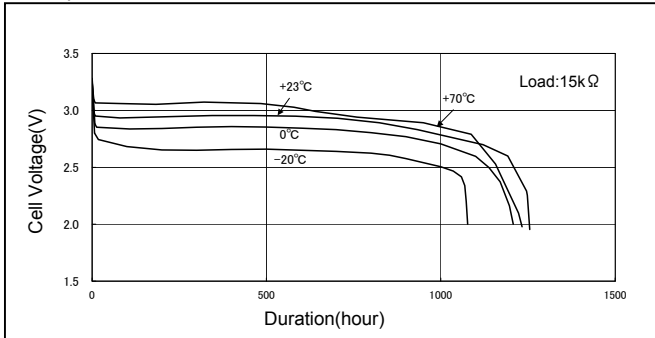


Nominal Voltage (V)		3
Nominal Capacity (mAh) <sup>*1</sup>		240
Standard Discharge Current (mA)		0.3
Max. Discharge Current (mA)	Continuous <sup>*2</sup>	4
	Pulse <sup>*3</sup>	20
Operating Temperature Range (°C)		-20 ~ +70
Max. Dimensions (mm)	Diameter (D)	20.0
	Height (H)	3.2
Weight (g)		3.0

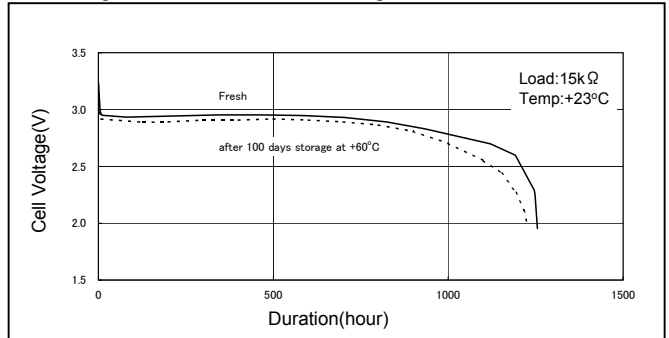
- \*1 Nominal capacity is determined at an end voltage of 2.0V when the battery is allowed to discharge at a standard current level at +23°C.
- \*2 Current value is determined to be the level at which 50% of the nominal capacity is obtained with an end voltage of 2.0V at +23°C.
- \*3 Current value for obtaining 2.0V cell voltage when pulse is applied for 15 seconds at 50% discharge depth (50% of the nominal capacity) at +23°C.

## Typical Characteristics

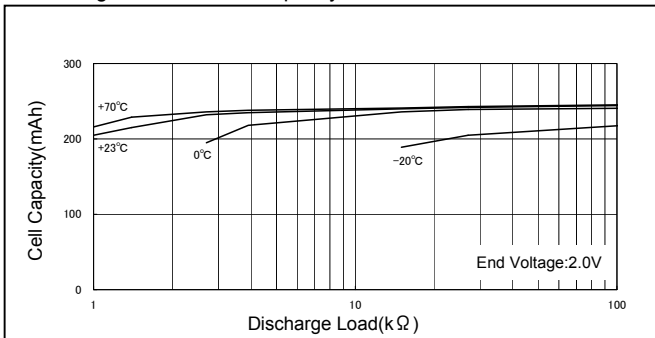
### Temperature Characteristics of CR2032



### Discharge Characteristics after storage of CR2032



### Discharge Load vs. Cell Capacity of CR2032



### Pulse Discharge Characteristics of CR2032

