

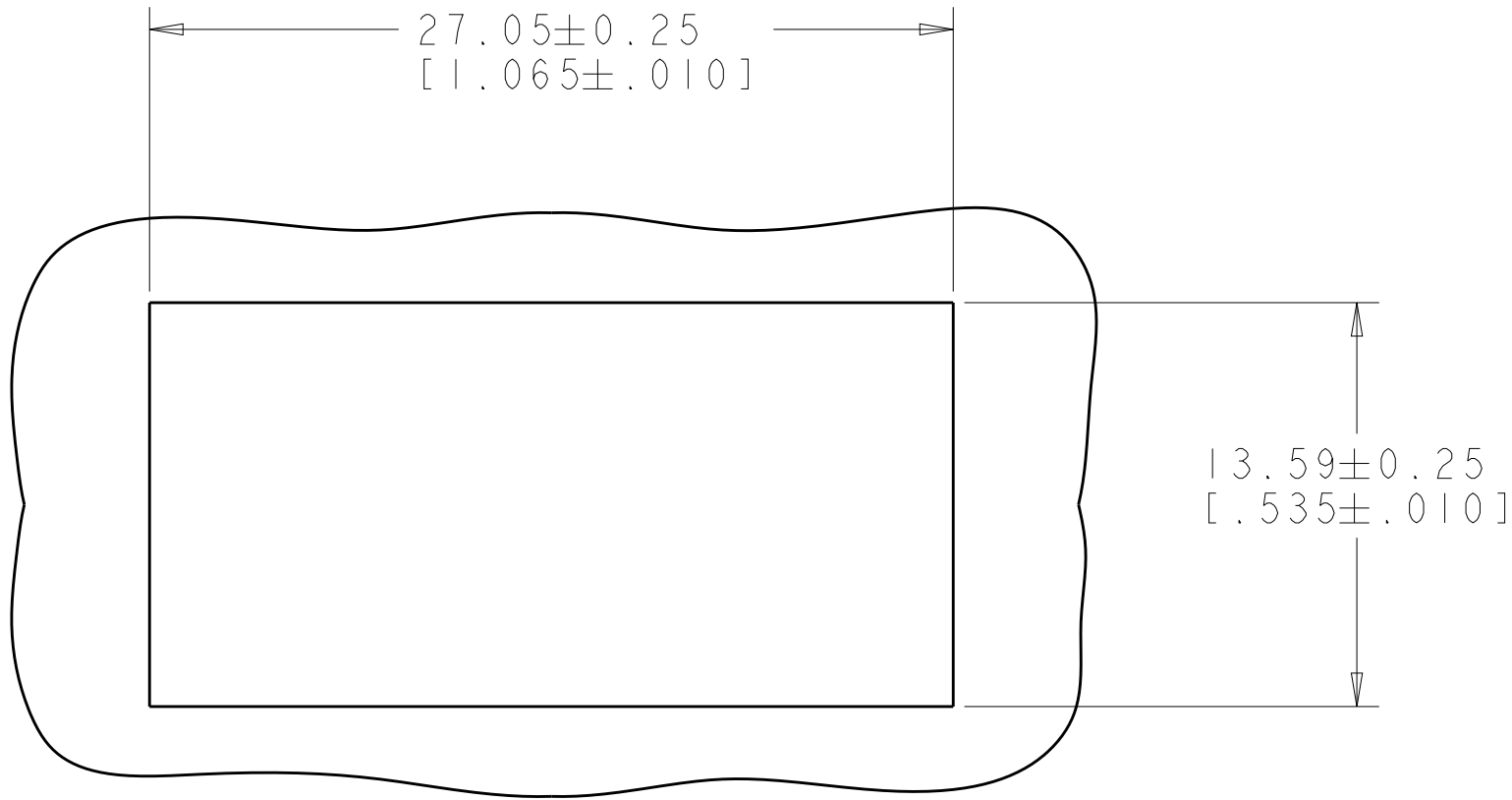
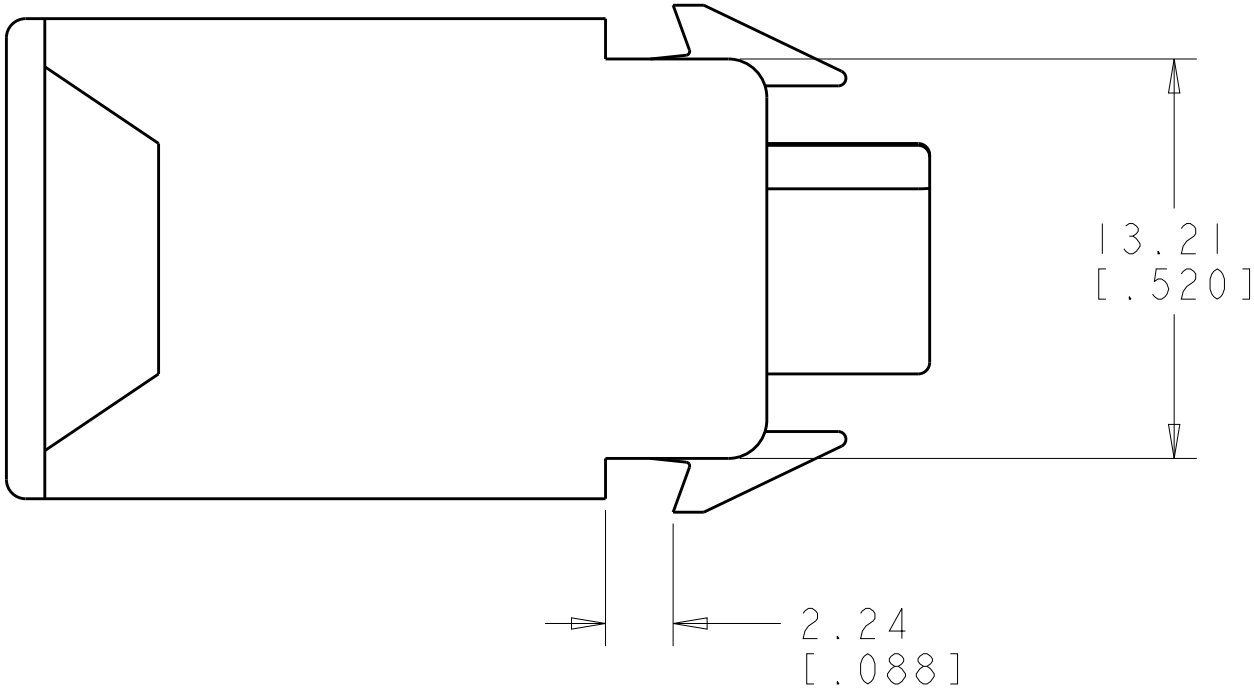
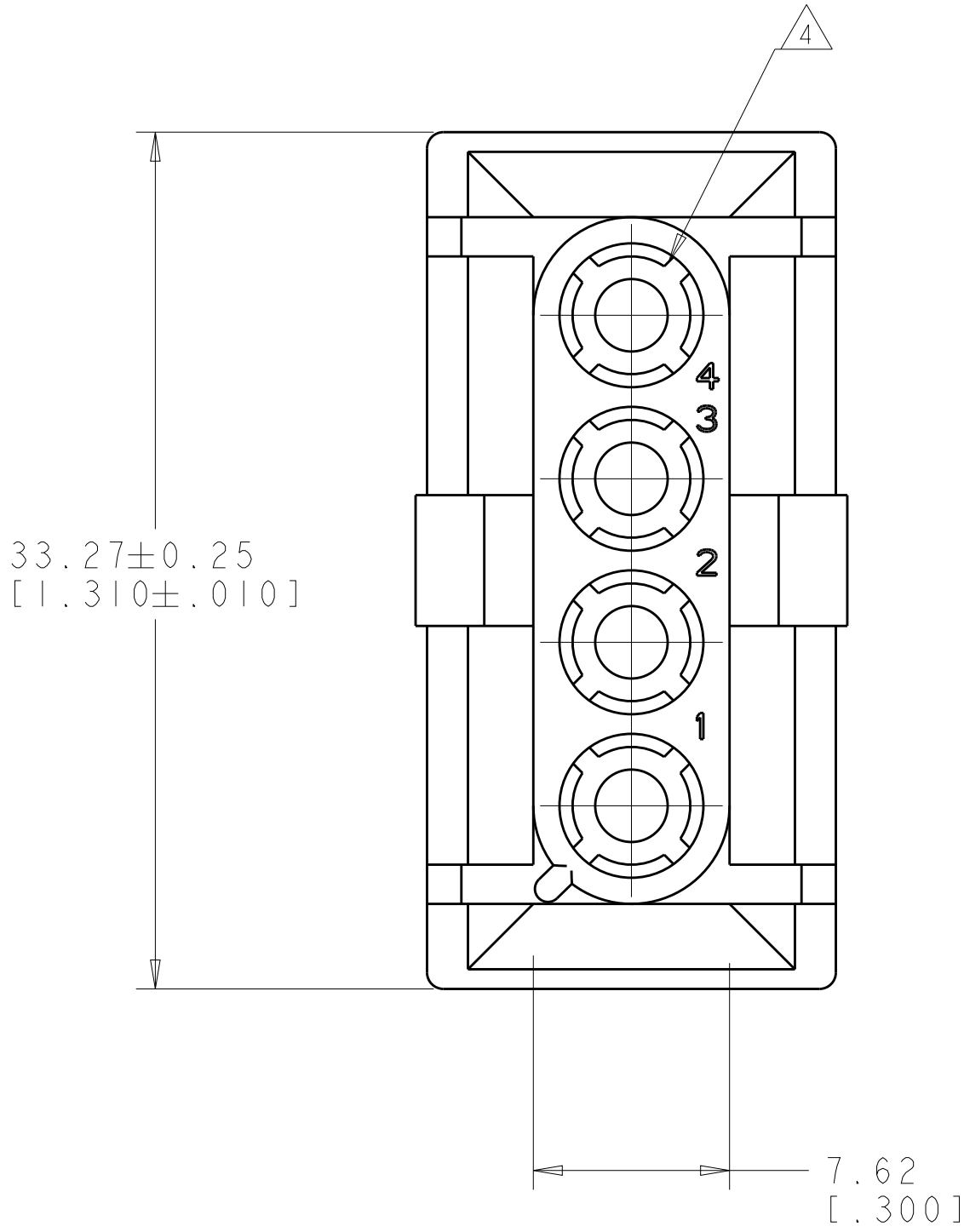
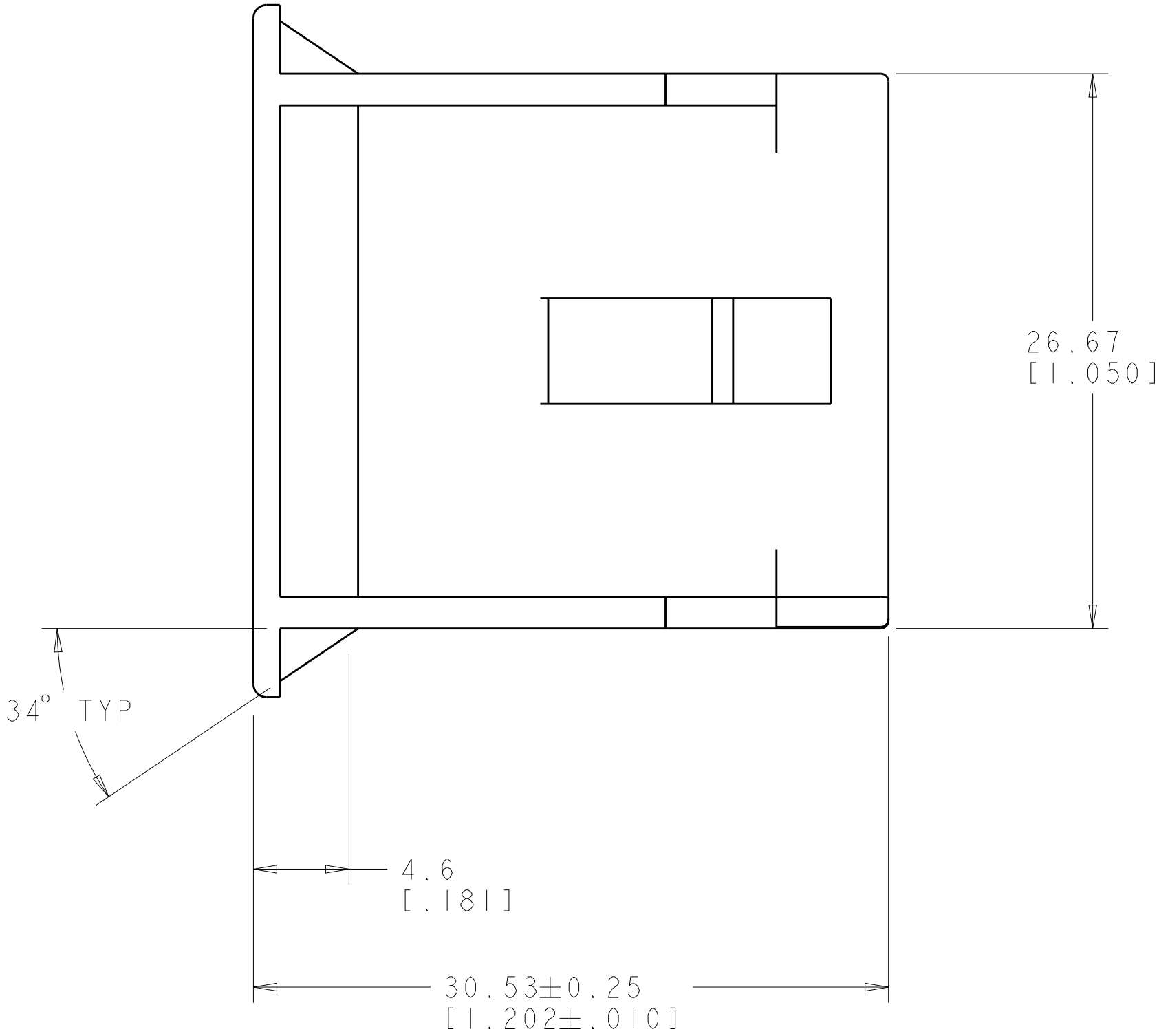
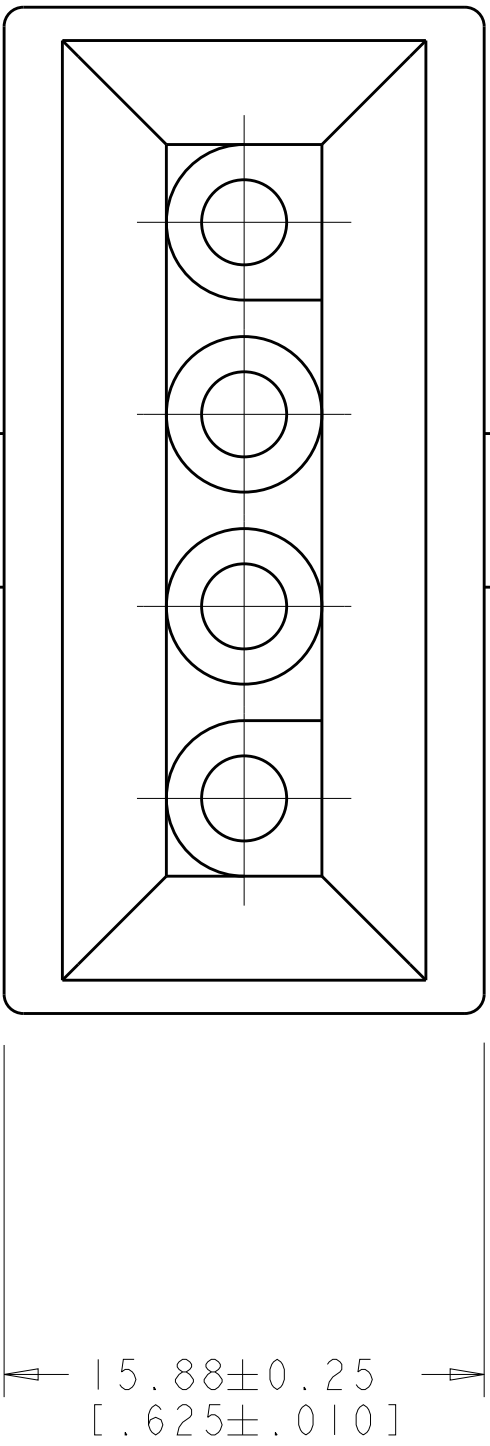
LOC		DIST		REVISIONS				
CM	00	P	LTR	DESCRIPTION		DATE	DWN	APVD
			FI	ECO-17-009556		03JUL2017	RS	SW

- ⚠️ PANEL THICKNESS 2.5±0.25 [.098±.010].
2.

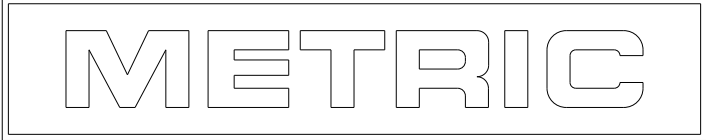
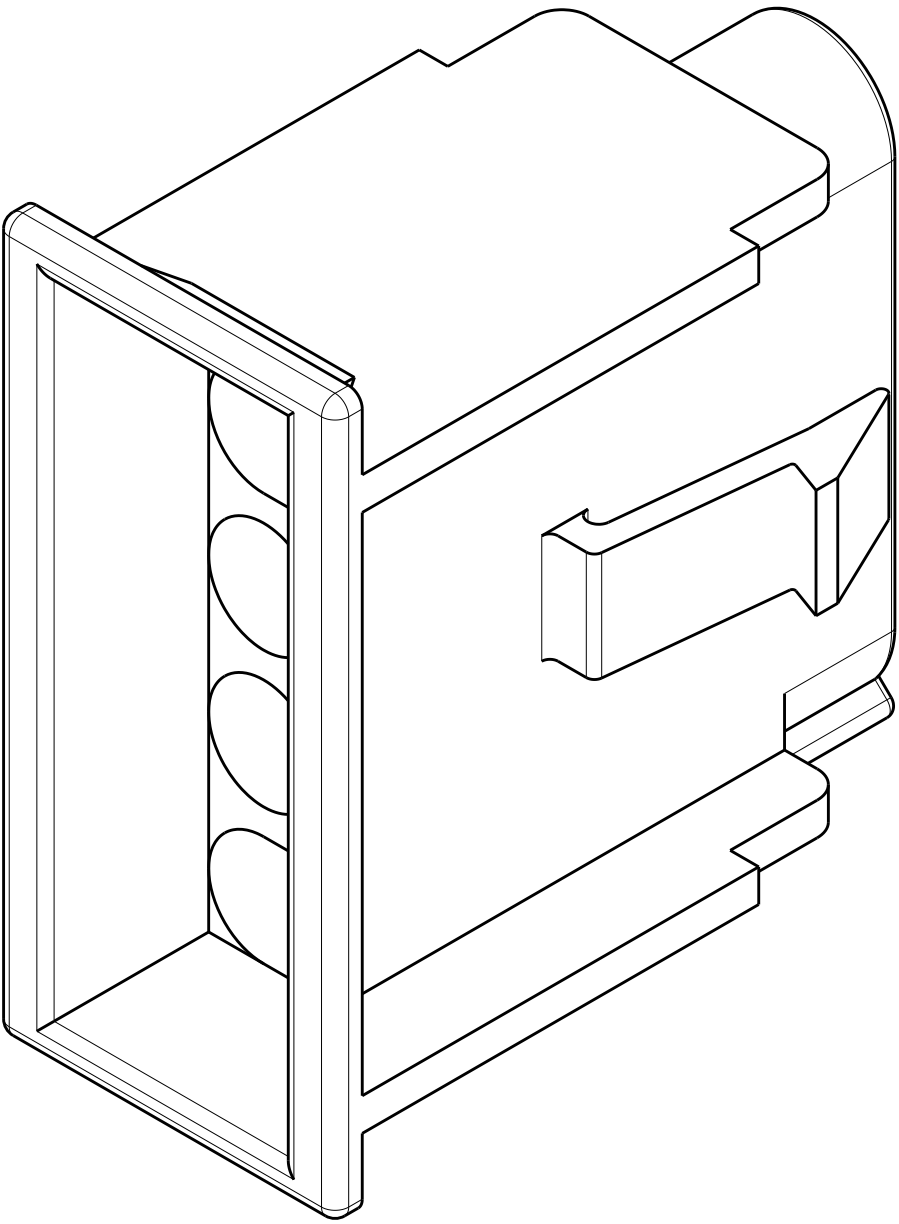
PANEL MUST BE PUNCHED SO THAT THE HOUSING ENTERS THE PANEL IN THE SAME DIRECTION AS THE PUNCH.
3.


DIMENSIONS SHOWN REPRESENT PRODUCT IN DRY, AS MOLDED CONDITION. ADDITIONAL 2% GROWTH DUE TO SUBSEQUENT MOISTURE ABSORPTION MAY OCCUR AND SHOULD BE ACCOUNTED FOR
- ⚠️

RIBS EQUALLY SPACED, NO SPECIFIC ORIENTATION. FOUR RIBS PREFERRED, SIX RIBS OPTIONAL.



RECOMMENDED PANEL CUT OUT ⚠️



THIS DRAWING IS A CONTROLLED DOCUMENT FOR TYCO ELECTRONICS CORPORATION. IT IS SUBJECT TO CHANGE AND SHOULD BE CONTACTED FOR THE LATEST REVISION.				DWN K. WHITAKER 04NOV2008	 Tyco Electronics Harrisburg, PA 17105-3608			
DIMENSIONS: mm[INCHES]				CHK D. COLEY 04NOV2008	NAME	CAP, LEAD-IN RAMP, 4 CIRCUIT, UNIVERSAL MATE-N-LOK(TM)		
TOLERANCES UNLESS OTHERWISE SPECIFIED:				APVD D. COLEY 04NOV2008				
				PRODUCT SPEC		SIZE A100779C=770002		
FINISH				APPLICATION SPEC				
MATERIAL NYLON, UL94V-0, WHITE				WEIGHT		RESTRICTED TO		
CUSTOMER DRAWING						SCALE 4:1		
						SHEET 1 OF 1		
						REV FI		