

Low Pass Filter

RLP-340+

50Ω DC to 340 MHz

Maximum Ratings

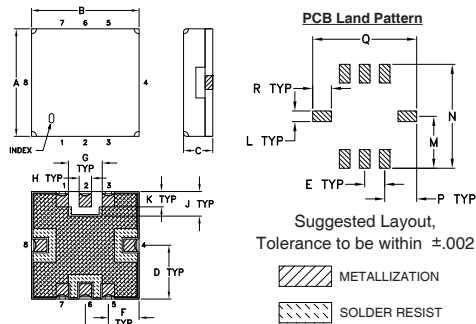
| | |
|-----------------------|----------------|
| Operating Temperature | -40°C to 85°C |
| Storage Temperature | -55°C to 100°C |
| RF Power Input | 0.5W Max |

Permanent damage may occur if any of these limits are exceeded.

Pin Connections

| | |
|--------|------------------|
| RF IN | 2 |
| RF OUT | 6 |
| GROUND | 1, 3, 4, 5, 7, 8 |

Outline Drawing

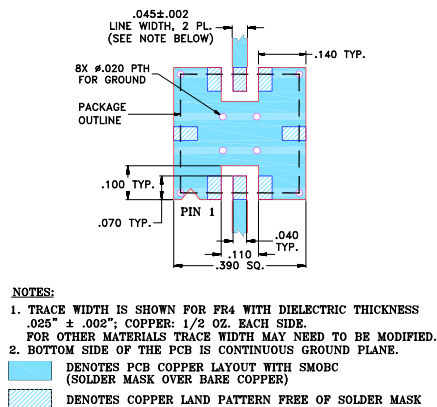


Outline Dimensions (inch/mm)

| A | B | C | D | E | F | G | H | J |
|------|------|------|------|------|------|------|-------|------|
| .350 | .350 | .100 | .175 | .075 | .100 | .110 | .040 | .080 |
| 8.89 | 8.89 | 2.54 | 4.45 | 1.91 | 2.54 | 2.79 | 1.02 | 2.03 |
| K | L | M | N | P | Q | R | wt. | |
| .050 | .040 | .195 | .390 | .120 | .390 | .070 | grams | |
| 1.27 | 1.02 | 4.95 | 9.91 | 3.05 | 9.91 | 1.78 | 0.25 | |

Note: Please refer to case style drawing for details

Demo Board MCL P/N: TB-332 Suggested PCB Layout (PL-176)



Features

- high rejection
- sharp insertion loss roll off
- excellent VSWR, 1.15:1 typ. @ passband
- aqueous washable

Applications

- wireless communications
- receivers / transmitters



Generic photo used for illustration purposes only
CASE STYLE: GP731

+RoHS Compliant

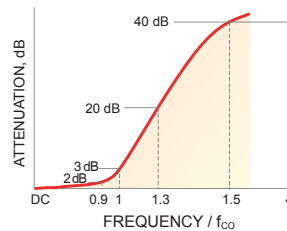
The +Suffix identifies RoHS Compliance. See our web site for RoHS Compliance methodologies and qualifications

| Reel Size | Devices/Reel |
|-----------|----------------------|
| 7" | 10, 20, 50, 100, 200 |
| 13" | 500, 1000 |

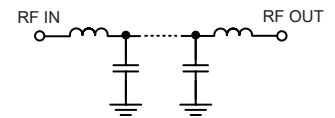
Low Pass Filter Electrical Specifications (T_{AMB} = 25°C)

| PASSBAND (MHz) | f _{co} , MHz Nom. | STOPBAND (MHz) | | VSWR (:1) | |
|----------------|----------------------------|----------------|---------------|---------------|---------------|
| | | (Loss > 20dB) | (Loss > 40dB) | Passband Typ. | Stopband Typ. |
| DC - 340 | 365 | 475 - 560 | 560 - 1500 | 1.15 | 20 |

Typical Frequency Response

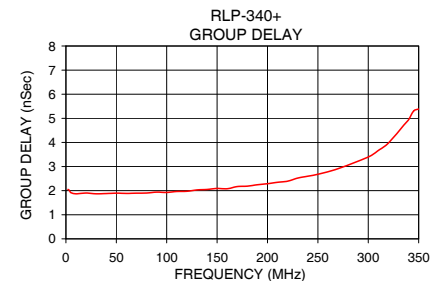
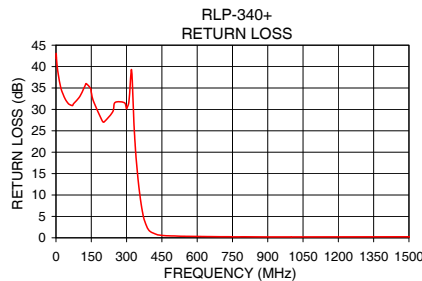
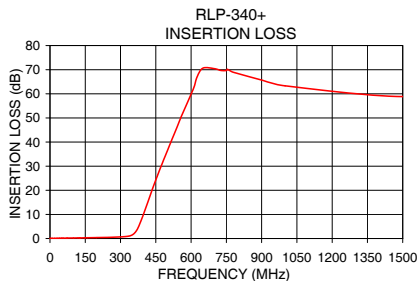


Functional Schematic



Typical Performance Data at 25°C

| Frequency (MHz) | Insertion Loss (dB) | | Return Loss (dB) | Frequency (MHz) | Group Delay (nSec) |
|-----------------|---------------------|----------|------------------|-----------------|--------------------|
| | \bar{x} | σ | | | |
| 0.5 | 0.02 | 0.01 | 41.88 | 3.0 | 2.03 |
| 50.0 | 0.15 | 0.00 | 31.53 | 5.0 | 1.91 |
| 150.0 | 0.30 | 0.01 | 33.97 | 10.0 | 1.87 |
| 300.0 | 0.68 | 0.01 | 30.15 | 30.0 | 1.87 |
| 320.0 | 0.81 | 0.01 | 39.21 | 50.0 | 1.90 |
| 340.0 | 1.10 | 0.05 | 19.06 | 70.0 | 1.90 |
| 356.0 | 1.90 | 0.16 | 10.20 | 110.0 | 1.96 |
| 365.0 | 2.89 | 0.24 | 6.87 | 130.0 | 2.03 |
| 376.0 | 4.77 | 0.34 | 4.09 | 150.0 | 2.09 |
| 396.0 | 9.66 | 0.42 | 1.69 | 170.0 | 2.17 |
| 432.0 | 19.55 | 0.38 | 0.69 | 190.0 | 2.24 |
| 460.0 | 26.81 | 0.36 | 0.51 | 210.0 | 2.35 |
| 475.0 | 30.57 | 0.37 | 0.47 | 250.0 | 2.68 |
| 518.0 | 40.89 | 0.39 | 0.39 | 270.0 | 2.91 |
| 560.0 | 50.95 | 0.81 | 0.35 | 300.0 | 3.40 |
| 700.0 | 70.40 | 4.16 | 0.26 | 310.0 | 3.67 |
| 1000.0 | 63.32 | 2.29 | 0.21 | 340.0 | 4.94 |
| 1500.0 | 58.88 | 2.43 | 0.24 | 350.0 | 5.38 |



Notes

- Performance and quality attributes and conditions not expressly stated in this specification document are intended to be excluded and do not form a part of this specification document.
- Electrical specifications and performance data contained in this specification document are based on Mini-Circuits' applicable established test performance criteria and measurement instructions.
- The parts covered by this specification document are subject to Mini-Circuits' standard limited warranty and terms and conditions (collectively, "Standard Terms"); Purchasers of this part are entitled to the rights and benefits contained therein. For a full statement of the Standard Terms and the exclusive rights and remedies thereunder, please visit Mini-Circuits' website at www.minicircuits.com/MCLStore/terms.jsp

