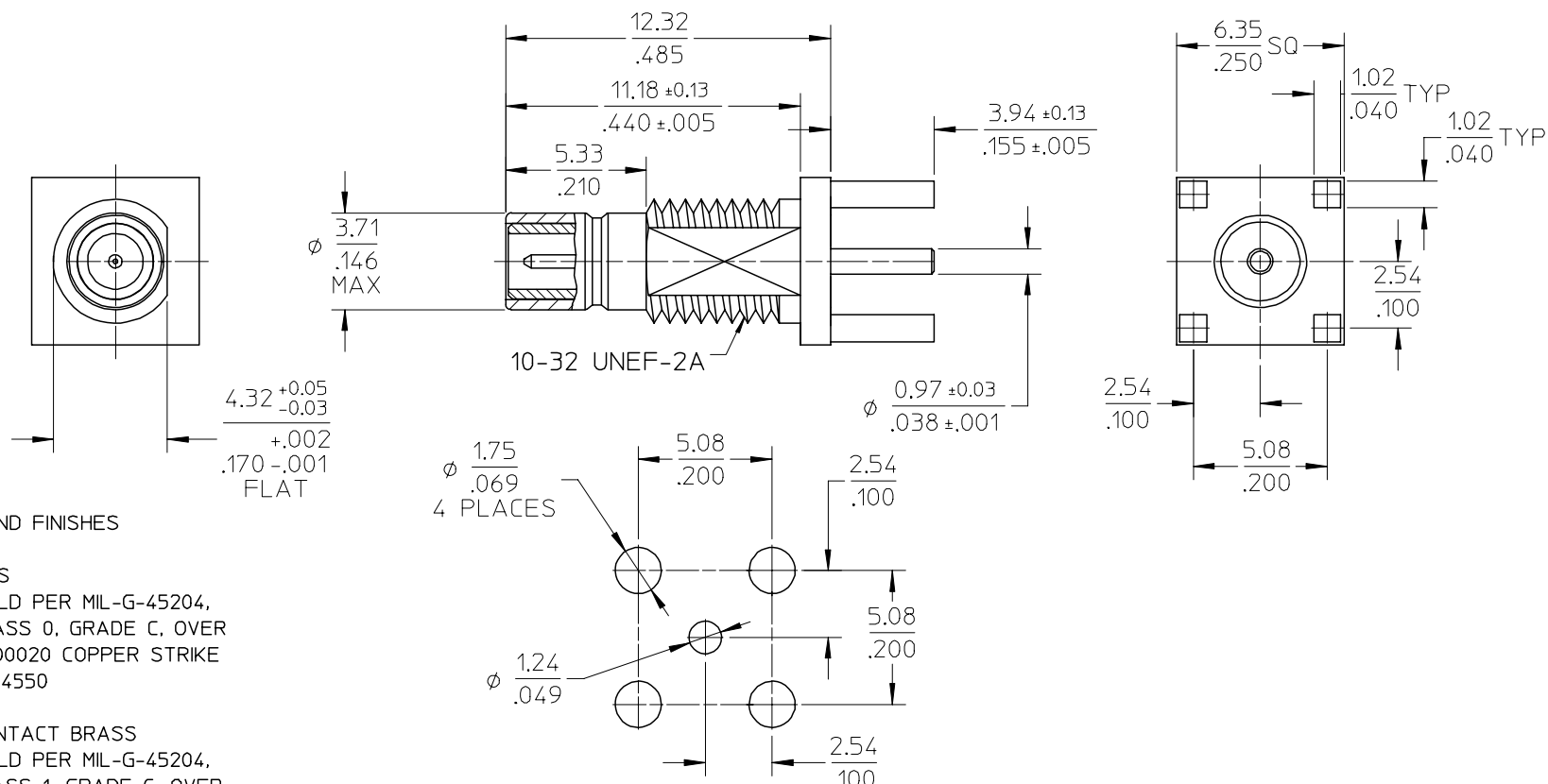


7 6 5 4 3 2 1



MATERIALS AND FINISHES

BODY BRASS
 PLATED GOLD PER MIL-G-45204,
 TYPE II, CLASS 0, GRADE C, OVER
 .00010 TO .00020 COPPER STRIKE
 PER MIL-C-14550

CENTER CONTACT BRASS
 PLATED GOLD PER MIL-G-45204,
 TYPE II, CLASS 1, GRADE C, OVER
 .00010 TO .00020 NICKEL PER
 QQ-N-290

INSULATOR TEFLON

RECOMMENDED PCB LAYOUT PART NO.#73396-0150

MIL-STD-348A FIG. 311-1	PERFORMANCE SPECIFICATION
SPECIFICATION	DESCRIPTION

WM UPLOAD EC NO: URF2005-0384 DRWN: YCHENG CHKD: APPR: MHUANG 2005/03/15 2005/03/18 2005/03/21	DESCRIPTION REV	QUALITY SYMBOLS	GENERAL TOLERANCES (UNLESS SPECIFIED)		DIMENSION STYLE		SCALE	DESIGN UNITS	THIRD ANGLE PROJECTION		
		▼=0 □=0	mm	INCH	MM/IN	---	METRIC	☉ □ THIRD ANGLE PROJECTION			
		4 PLACES	±---	±---	DRAWN BY	DATE	TITLE				
		3 PLACES	±---	±---	CLAIRE	2002/2/6	50 OHM SMB VERTICAL PCB MOUNT JACK RECEPTACLE SMB-J/PCB				
		2 PLACES	±0.13	±---	CHECKED BY	DATE	MOLEX MOLEX INCORPORATED				
1 PLACE	±0.25	±---	KERRIE	2002/2/6	APPROVED BY		DATE	MATERIAL NO.			
ANGULAR ± 2 °			MISEN	2002/2/6	733960150		SD-73396-015		SHEET NO.		
DRAFT WHERE APPLICABLE MUST REMAIN WITHIN DIMENSIONS			SIZE		THIS DRAWING CONTAINS INFORMATION THAT IS PROPRIETARY TO MOLEX INCORPORATED AND SHOULD NOT BE USED WITHOUT WRITTEN PERMISSION						
A2			A 4								

6 5 4 3 2 1

