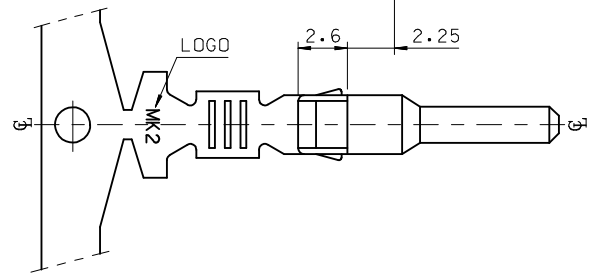
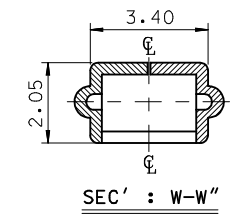
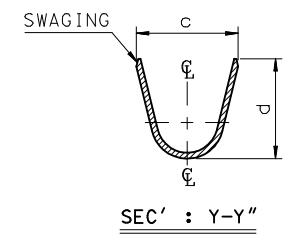
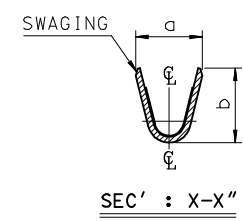
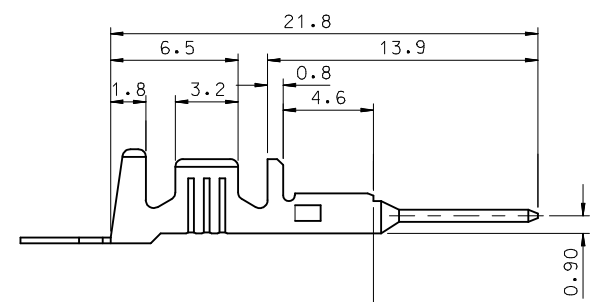
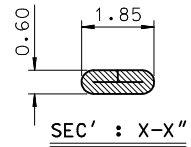


- NOTES.
1. MATERIAL : Ⓢ BRASS, PRE-TIN PLATED
 2. FINISH : 0.8~1.8 μ m, Tin(Sn) plating overall
0.3~0.8 μ m, Copper(Cu) plating
 3. PRODUCT SPECIFICATION : PS-35150-001, PS-35180-002
PS-35180-003, PS-35524-001
 4. CRIMPING SPECIFICATION : CS-35745-001
 5. RECOMMENDED LENGTH OF WIRE STRIP IS 4.0~4.8mm



MATERIAL NO	ENG. No.	AWG	a	b	c	d	PITCH 'P'
357450210	35745-0210	#18-#14	3.4	3.8	5.2	4.8	12.0
357450110	35745-0110	#22-#20	2.85	2.8	4.2	4.0	10.6
357450410	35745-0410	#24	2.2	1.75	3.85	3.5	10.6

REVISED EC NO: KOR2009-0151 TDRWN: JHPARK01 2009/05/18 CHKD: WY. YANG 2009/06/18 APPR: YUNSIKKIM 2009/07/01	QUALITY SYMBOLS	GENERAL TOLERANCES (UNLESS SPECIFIED)	DIMENSION STYLE	SCALE	DESIGN UNITS	THIRD ANGLE PROJECTION															
	$\blacktriangledown=0$ $\nabla C=0$	<table border="1"> <thead> <tr> <th></th> <th>mm</th> <th>INCH</th> </tr> </thead> <tbody> <tr> <td>4 PLACES</td> <td>\pm---</td> <td>\pm---</td> </tr> <tr> <td>3 PLACES</td> <td>\pm---</td> <td>\pm---</td> </tr> <tr> <td>2 PLACES</td> <td>\pm0.2</td> <td>\pm---</td> </tr> <tr> <td>1 PLACE</td> <td>\pm0.3</td> <td>\pm---</td> </tr> </tbody> </table>		mm	INCH	4 PLACES	\pm ---	\pm ---	3 PLACES	\pm ---	\pm ---	2 PLACES	\pm 0.2	\pm ---	1 PLACE	\pm 0.3	\pm ---	MM ONLY	4:1	METRIC	
		mm	INCH																		
	4 PLACES	\pm ---	\pm ---																		
3 PLACES	\pm ---	\pm ---																			
2 PLACES	\pm 0.2	\pm ---																			
1 PLACE	\pm 0.3	\pm ---																			
DESCRIPTION	DRAWN BY JS.KANG DATE 1998/01/19 CHECKED BY BK.CHOI DATE 1998/01/19 APPROVED BY CW.LEE DATE 1998/01/19 MATERIAL NO.	TITLE .070 MALE TERMINAL (A-TYPE)	MOLEX INCORPORATED			DOCUMENT NO. SD-35745-001 SHEET NO. 1 OF 01															
REV	DRAFT WHERE APPLICABLE MUST REMAIN WITHIN DIMENSIONS	ANGULAR $\pm 1^\circ$	SEE TABLE	THIS DRAWING CONTAINS INFORMATION THAT IS PROPRIETARY TO MOLEX INCORPORATED AND SHOULD NOT BE USED WITHOUT WRITTEN PERMISSION																	