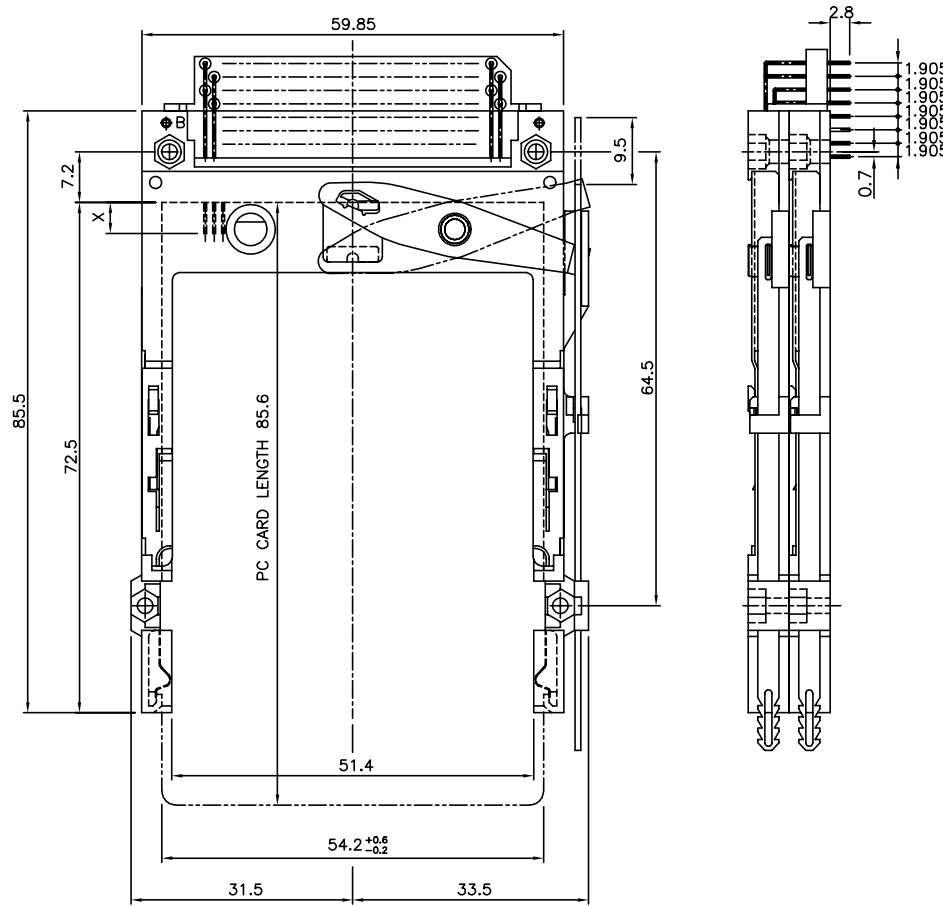


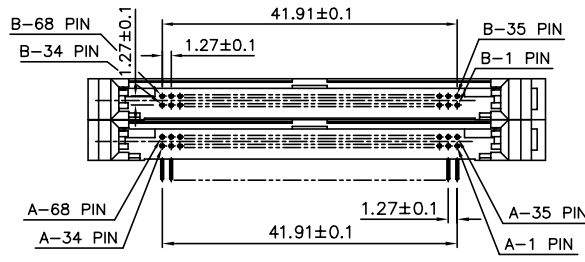
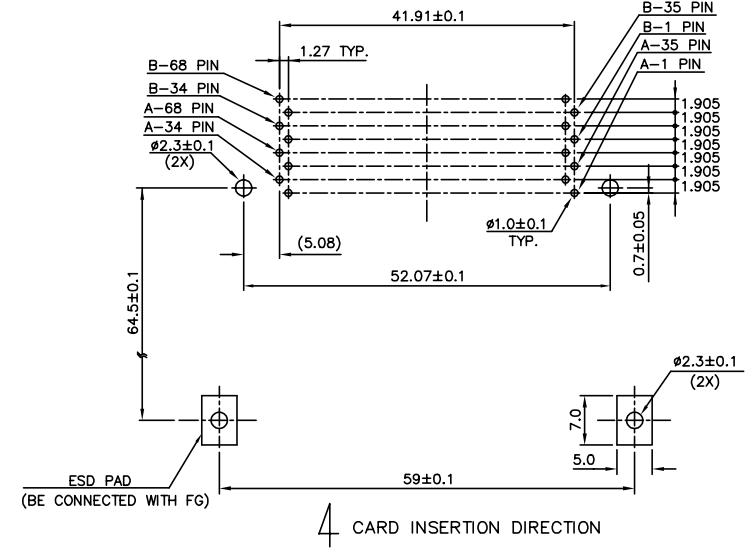
PRODUCT NO.	57455-800CA
	57455-800CALF



- NOTES:
- EJECT FORCE : 3.5 Kg MAX.
  - EJECT TRAVEL: 8.0mm
  - MATERIAL
  - 3.1 HEADER ASS'Y :  
 PLASTIC : HOUSING ...HIGH TEMPERATURE THERMOPLASTIC UL94V-0 BLACK  
 : LOCATOR ...HIGH TEMPERATURE THERMOPLASTIC UL94V-0 BLACK  
 PIN : COPPER ALLOY
  - 3.2 EJECT MECHANISM ASS'Y :  
 PLASTIC : GUIDE: HIGH TEMPERATURE THERMOPLASTIC UL94V-0 BLACK  
 : PUSH ROD: HIGH TEMPERATURE THERMOPLASTIC UL94V-0 BLACK  
 PLATE : STAINLESS  
 EMI CONTACT: PHOSPHOR BRONZE
  4. FINISH (PIN)  
 UNDER PLATING : 1.25  $\mu$ m MIN. Ni  
 CONTACT AREA : 0.076  $\mu$ m MIN. GOLD  
 SOLDER TAIL : 2.5  $\mu$ m MIN. Sn-Pb  
 : 2.5  $\mu$ m MIN. PURE Sn (FOR -\*\*\*\*\*LF)

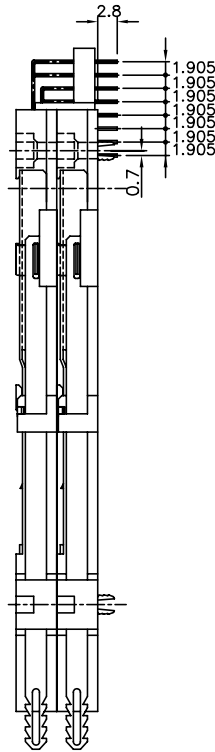
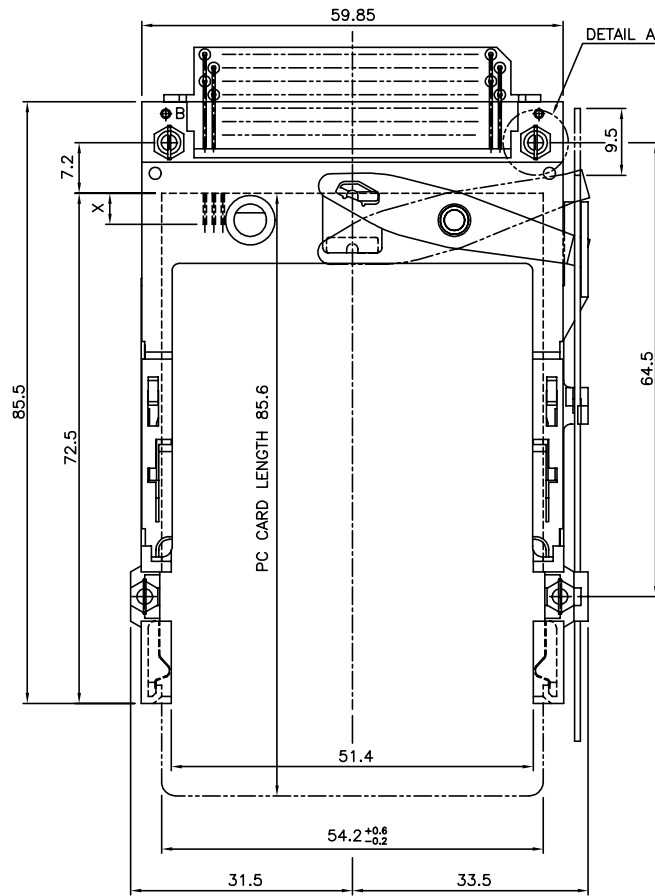
DIM "X"	4.25 $\pm$ 0.1	3.5 $\pm$ 0.1	5.0 $\pm$ 0.1
	OTHERS	36,67	1,17,34,35,51,68

- IF LEAD FREE P/N THE HOUSING WILL WITHSTAND EXPOSURE TO 260°C PEAK TEMPERATURE FOR 10 SECONDS IN A WAVE SOLDER APPLICATION WITH A 1.00MM MINIMUM THICK CIRCUIT BOARD.
- IF LEAD FREE P/N THE PRODUCT MEETS EUROPEAN UNION DIRECTIVES AND OTHER COUNTRY REGULATIONS AS DESCRIBED IN GS-22-008
- LEAD FREE P/N PACKAGING MEETS GS-14-920 SPECIFICATION
- PRODUCT SPEC: 110-263



mat'l. code	surface ISO1302	tolerance ISO1101 ISO406	projection 	product family PCMCIA
l'tecn nodr	date	tolerances unless otherwise specified	MM	R/A EJECTOR HDR ASS'Y TYPE 1/2/3
A T10220 WL	08/15/01	angle	scale	dwg no
B T20214 WL	07/01/02	0°±2'		sheet 1 of 2
C N05-0155 WB	06/10/05			size A4
D BX-N-011383 ZK	04/02/12	dr WENDY CHEN	05/30/01	FCI
		eng MINERVA WANG	05/30/01	57455
		chr MINERVA WANG	05/30/01	Product Customer Drawing
		appd JENN TSAO	05/30/01	
sheet index	revision sheet	D 1	D 2	

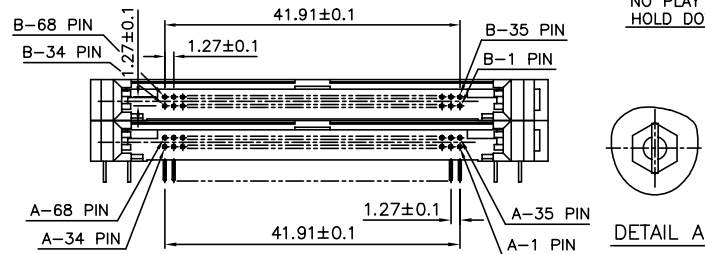
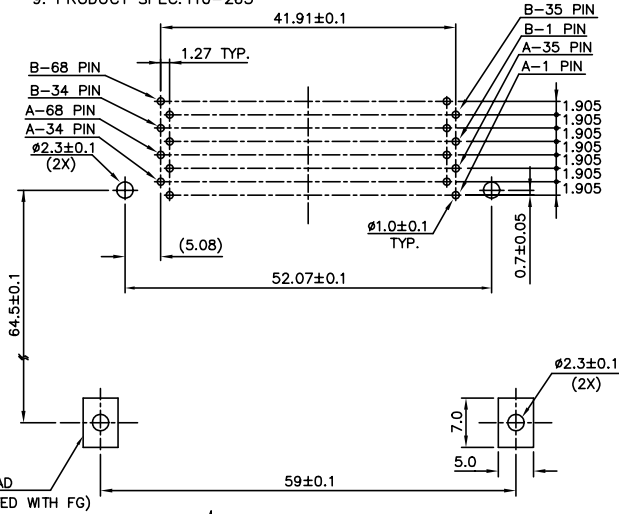
PRODUCT NO.	57455-800CAH
	57455-800CAHLF



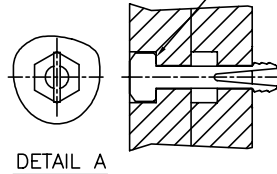
NOTES:

- EJECT FORCE : 3.5 Kg MAX.
- EJECT TRAVEL: 8.0mm
- MATERIAL
- HEADER ASS'Y :  
 PLASTIC : HOUSING ...HIGH TEMPERATURE THERMOPLASTIC UL94V-0 BLACK  
 : LOCATOR ...HIGH TEMPERATURE THERMOPLASTIC UL94V-0 BLACK  
 PIN : COPPER ALLOY
- EJECT MECHANISM ASS'Y :  
 PLASTIC : GUIDE: HIGH TEMPERATURE THERMOPLASTIC UL94V-0 BLACK  
 : PUSH ROD: HIGH TEMPERATURE THERMOPLASTIC UL94V-0 BLACK  
 PLATE : STAINLESS  
 EMI CONTACT: PHOSPHOR BRONZE
- FINISH (PIN)  
 UNDER PLATING : 1.25 um MIN. Ni  
 CONTACT AREA : 0.076 um MIN. GOLD  
 SOLDER TAIL : 2.5 um MIN. Sn-Pb  
 : 2.5 um MIN. PURE Sn (FOR -\*\*\*\*\*LF)

5. DIM "X"	4.25±0.1	3.5±0.1	5.0±0.1
OTHERS	36,67	1,17,34,35,51,68	



NO PLAY BETWEEN HOLD DOWN AND HEADER



4 CARD INSERTION DIRECTION

mat'l. code	surface ISO1302	tolerance ISO1101 ISO406	projection	product family PCMCIA
ltr ecn nodr	date	tolerances unless otherwise specified	MM	R/A EJECTOR HDR ASS'Y TYPE 1/2/3
D		angle 0°±2'	scale	dwg no 57455
		dr WENDY CHEN 05/30/01		sheet 2 of 2
		eng MINERVA WANG 05/30/01		size A4
		chr MINERVA WANG 05/30/01		type Product Customer Drawing
		appd JENN TSAO 05/30/01		
sheet index	revision sheet			