

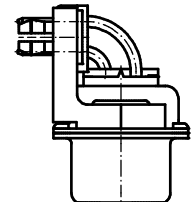
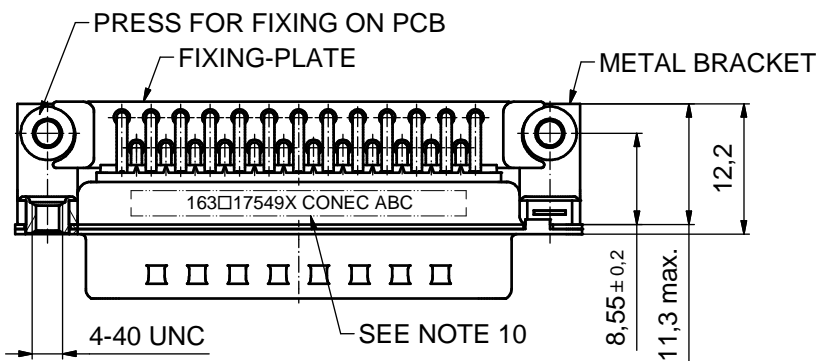
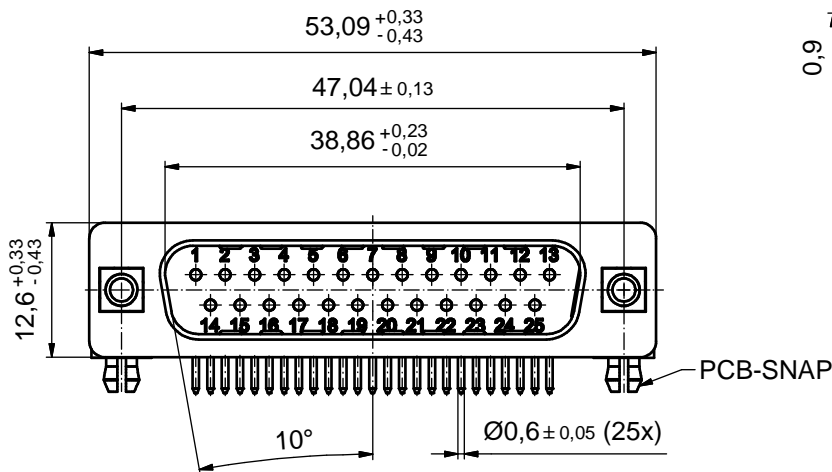
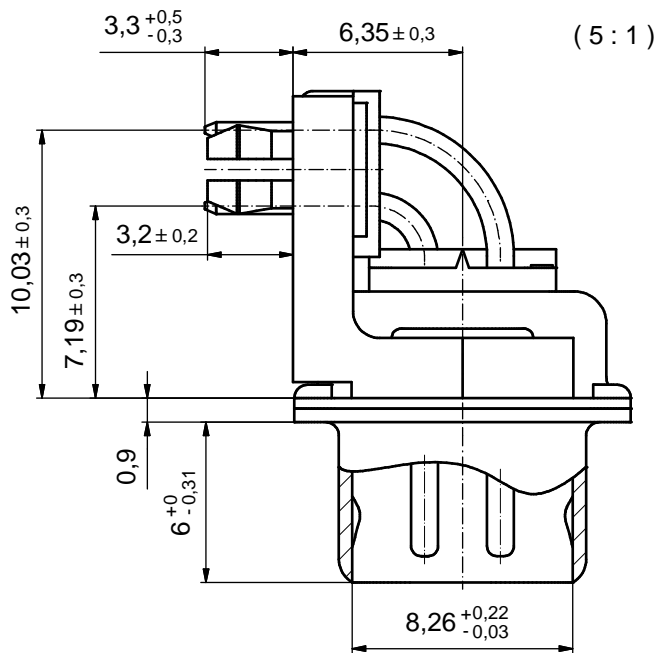
6 5 4 3 2 1

D

C

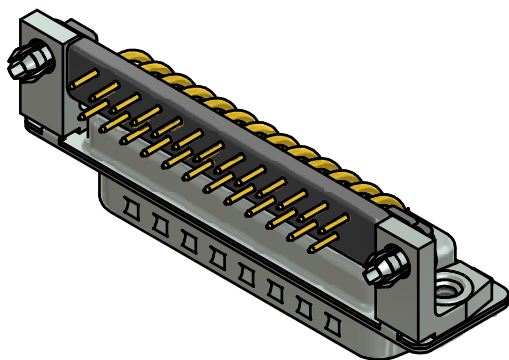
B

A



NOTES:

1. METALSHELLS: STEEL; min. 315µm TIN over 40-80µm NICKEL
2. INSULATORS: PBT GF UL 94 V-0, BLACK
3. SIGNAL CONTACTS: COPPER ALLOY; PLATING (SEE PART NO.):
 - (b) □ PLEASE ADD A for GOLD FLASH over NICKEL (PREFERRED TYPE)
 - PLEASE ADD B for 20µm HARD GOLD over min. 50µm NICKEL
 - PLEASE ADD C for 30µm HARD GOLD over min. 50µm NICKEL
 - PLEASE ADD J for 50µm HARD GOLD over min. 50µm NICKEL
4. METAL BRACKETS: ZINC DIE CAST; 300µm COPPER/40-120µm NICKEL/120-200µm TIN
5. THREADED INSERTS: COPPER ALLOY; min. 200µm TIN over 80µm NICKEL
6. PCB-SNAPS: COPPER ALLOY; min. 200µm TIN over 80µm NICKEL
PCB-HOLE: Ø3.1±0.1; PCB THICKNESS 1.6mm
7. FIXING-PLATE: PBT GF UL 94 V-0, BLACK
8. MAXIMUM TORQUE VALUE FOR THREAD: 6 in.LB
9. P.C.B. HOLE DRILLINGS ON SHEET 2
10. CONNECTOR IS PART MARKED: 163□17549X CONEC ABC (see note 3)



Directive 2002/95/EC RoHS compliant

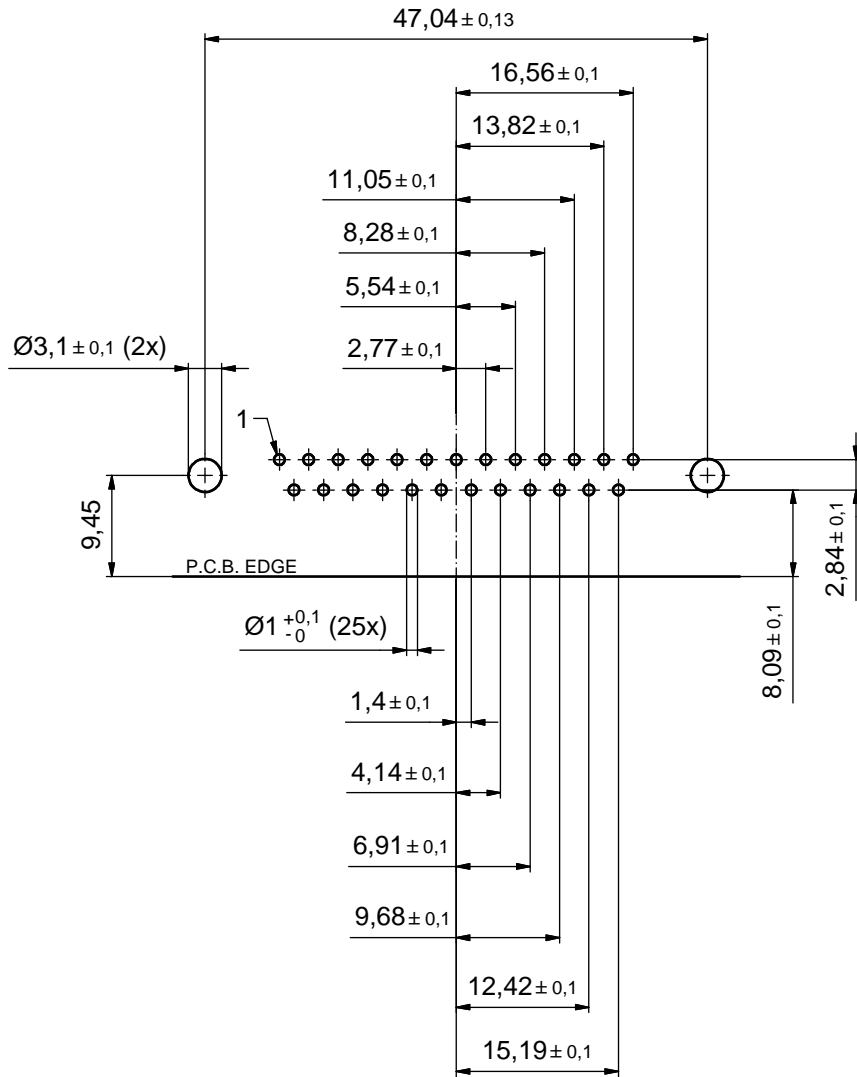
THIS DRAWING MAY NOT BE COPIED OR REPRODUCED IN ANY WAY, AND MAY NOT BE PASSED ON TO A THIRD PARTY WITHOUT WRITTEN PERMISSION. OWNERSHIP AND COPYRIGHT OF CONEC GmbH DO NOT ALTER CAD DRAWING BY HAND	tolerance		dim. in mm		scale: 2:1 (5:1)	
					material: SEE NOTES	
			date		title:	
			name		D-SUB MALE 90°	
			drawn 05.11.13 Henneboel		25pos. SOLDER PIN ANGLED 0.318inch threaded insert, metal bracket, fixing-plate, snap	
		appd. 05.11.13 Lehmenkühler		dwg no:		
		norm		DIN-A3		
		d-old 16K1A022A/16K1A682/16K2A682		(b) 16K1A3319		
3 x b	Ä4946	05.11.2013	K.H.	part no: (b) 163□17549X (see note 3)		
a	Original			sh: 1/2		
rev.	description	date	name			



6 5 4 3 2 1

P.C.B. HOLE DRILLINGS

(P.C.B. TOP SIDE)



THIS DRAWING MAY NOT BE COPIED OR REPRODUCED IN ANY WAY, AND MAY NOT BE PASSED ON TO A THIRD PARTY WITHOUT WRITTEN PERMISSION. OWNERSHIP AND COPYRIGHT OF CONEC GmbH DO NOT ALTER CAD DRAWING BY HAND				tolerance		scale: 2:1
				date	name	material: see sheet 1
				drawn	05.11.13 Henneboel	title: P.C.B. HOLE DRILLINGS D-SUB MALE 90°25pos. solder pin angled threaded insert, metal bracket, fixing-plate, snap
				appd.	05.11.13 Lehmenkühler	
				norm		
				d-old		dwg no:
	a	Original		CONEC ®		
rev.	description	date	name			
						DIN-A3
						sh: 2/2