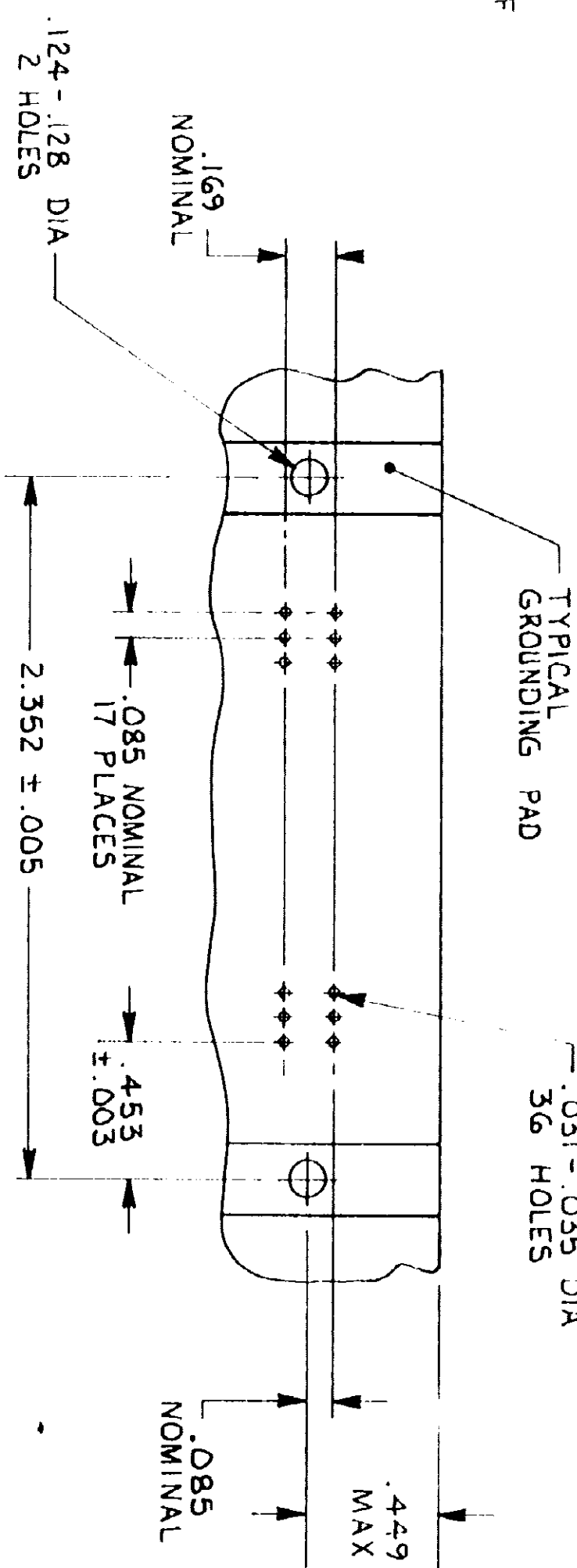
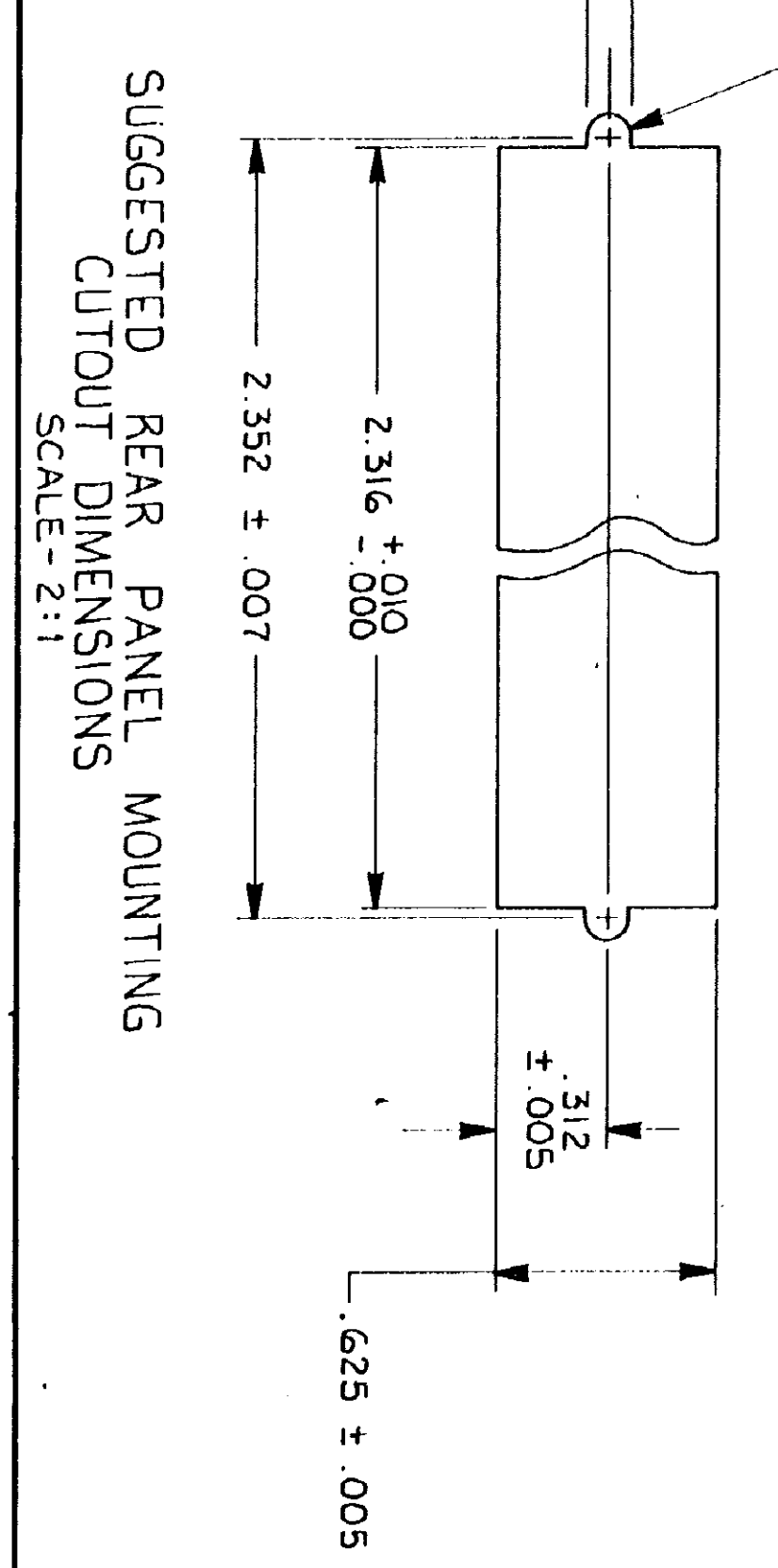
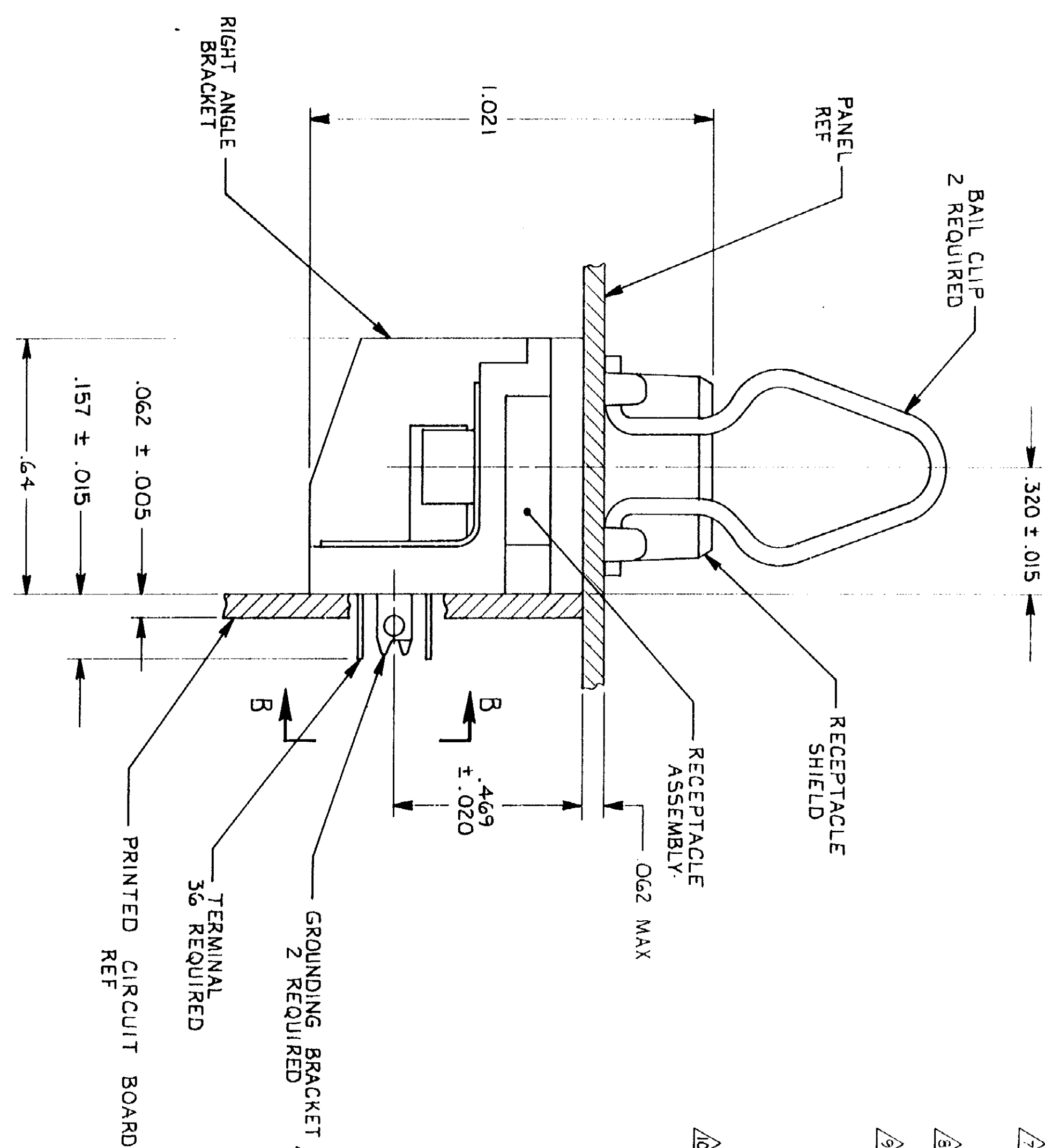
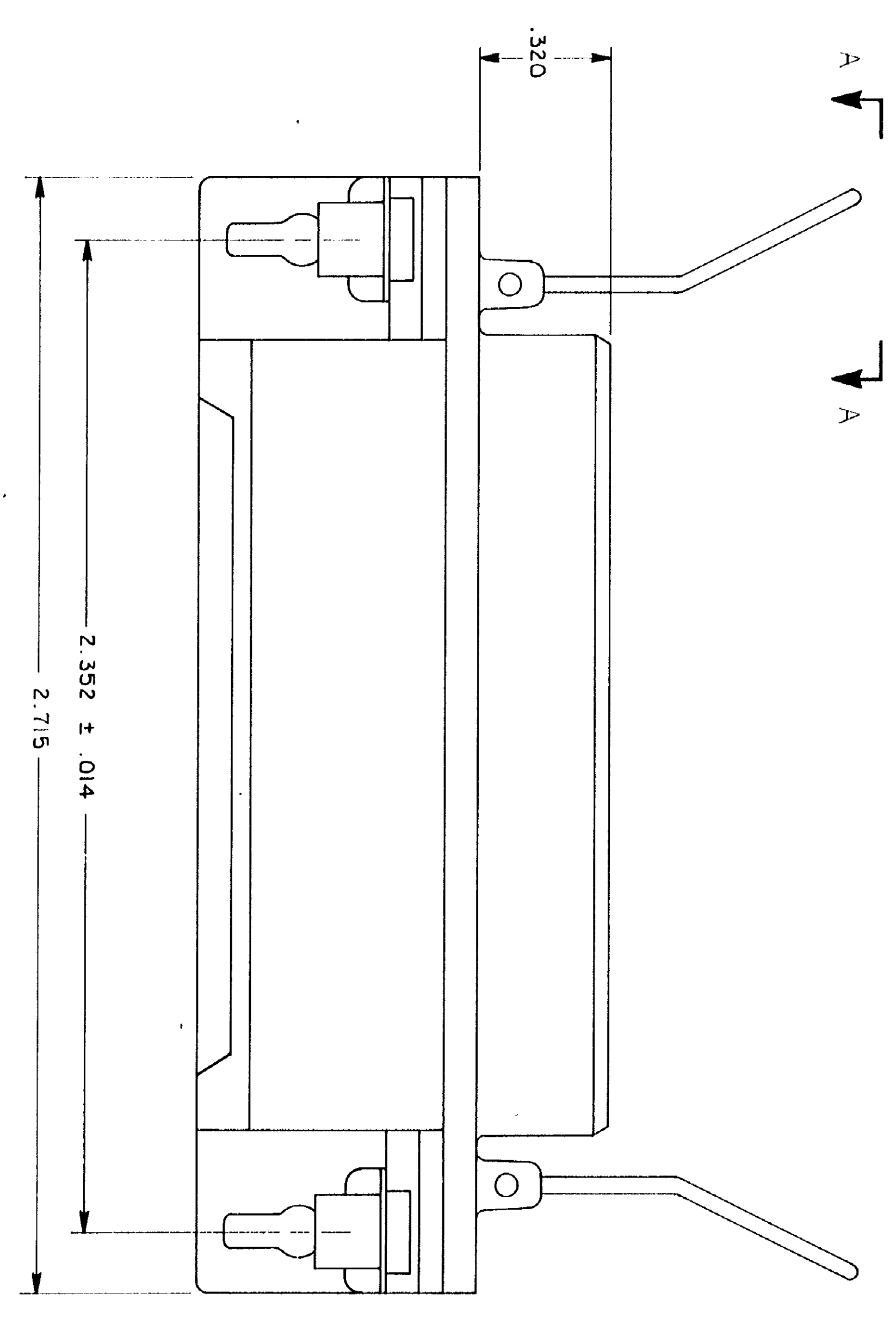


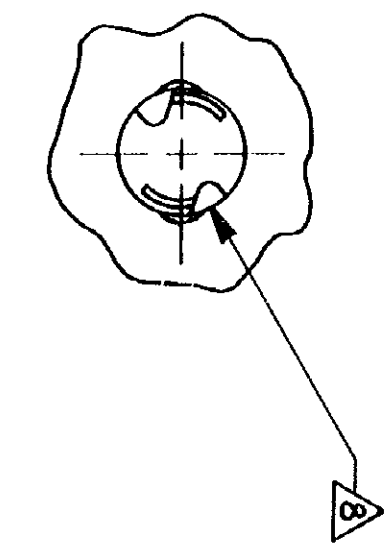
VIEW A-A
SCALE 2:1



SUGGESTED PRINTED CIRCUIT BOARD MOUNTING DIMENSIONS
SCALE - 2:1



SUGGESTED REAR PANEL MOUNTING CUTOUT DIMENSIONS
SCALE - 2:1



VIEW B-B
SCALE - 8:1

- 1 MATERIAL: SUPPORT PLATE, BRACKET, HOUSING AND ADAPTER COMB - POLYESTER, BLACK. BAIL CLIPS - PASSIVATED STAINLESS STEEL. RECEPTACLE SHIELD - BRIGHT NICKEL OVER COPPER PLATED ZINC. TERMINALS - STAINLESS-TIN LEAD OVER NICKEL PLATED HIGH STRENGTH COPPER ALLOY. MATTING SURFACE - LOCALIZED GOLD OVER NICKEL PLATED HIGH STRENGTH COPPER ALLOY. GROUND BRACKET-TIN LEAD PLATED CARBON STEEL.
 - 2 THE CONTACT SURFACES OF THE TERMINALS ARE COATED WITH LUBRICANT.
 - 3 CENTER-TO-CENTER SPACING OF TERMINALS IS .085 NOMINAL.
 - 4 ALL DIMENSIONS SHOWN ARE MAXIMUM UNLESS OTHERWISE SPECIFIED.
 - 5 TERMINAL 1 LOCATED IN THIS ROW FOR STANDARD ORIENTATION.
 - 6 GROUNDING BRACKET RETAINS CONNECTOR IN .062 THICK PC BOARD WITHOUT ADDITIONAL HARDWARE.
 - 7 GROUNDING BRACKET LOCATES CONNECTOR FLUSH WITH TOP OF PC BOARD AND SPRING LOCKS BENEATH.
 - 8 CYLINDRICAL SHAPE OFFERS 180° OF SOLDERING SURFACE.
 - 9 SURFACE AREA OF GROUNDING BRACKET BELOW PC BOARD SHALL PASS SOLDERABILITY REQUIREMENTS IN ACCORDANCE WITH AMP SPECIFICATION 109-11-2. DISCOLORATION, SCRATCHES, SPOTS AND OTHER COSMETIC DEFICIENCIES TYPICAL OF BARE PLATING PROCESSES ARE ACCEPTABLE PROVIDED PARTS PASS 24 HOUR EXPOSURE AT 95% RH AT 40° C WITHOUT EVIDENCE OF CORROSION.
- IF TERMINALS DO NOT EXTEND BELOW COMB THEN COMB SHALL BE PARTIALLY RETRACTED BEFORE INSERTING CONNECTOR INTO PC BOARD.

UNLESS OTHERWISE SPECIFIED DIMENSIONS ARE IN INCHES ON: DECIMALS: 1/100 ANGLES: 1/10		CONTRACT NO. OR S. Ordinan. 1-6-87		NAME: RECEPTACLE ASSEMBLY, SHIELDED, W/ BOARD LOCK & BAIL LOCK, FLUSH MOUNTING CHAMP	
MATERIAL:		CHK: S. Ordinan. 1-12-87		AMP INCORPORATED Harrisburg, Pa. 17105	
FINISH:		APPRO: S. Ordinan. 1-13-87		PART NO. 555119-1	
OTHER APPRO:		OSGM APPRO:		DRAWING NO. 555119	
SIZE: D		SCALE: 4:1		SHEET 1 OF 1	