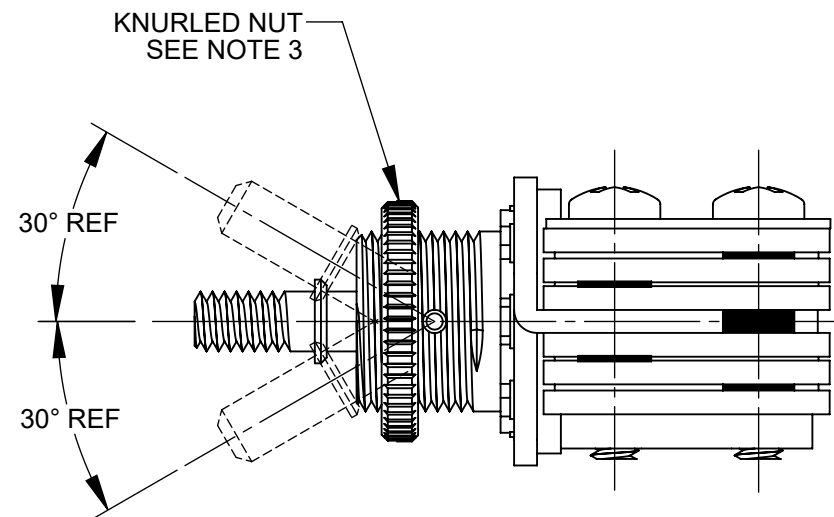
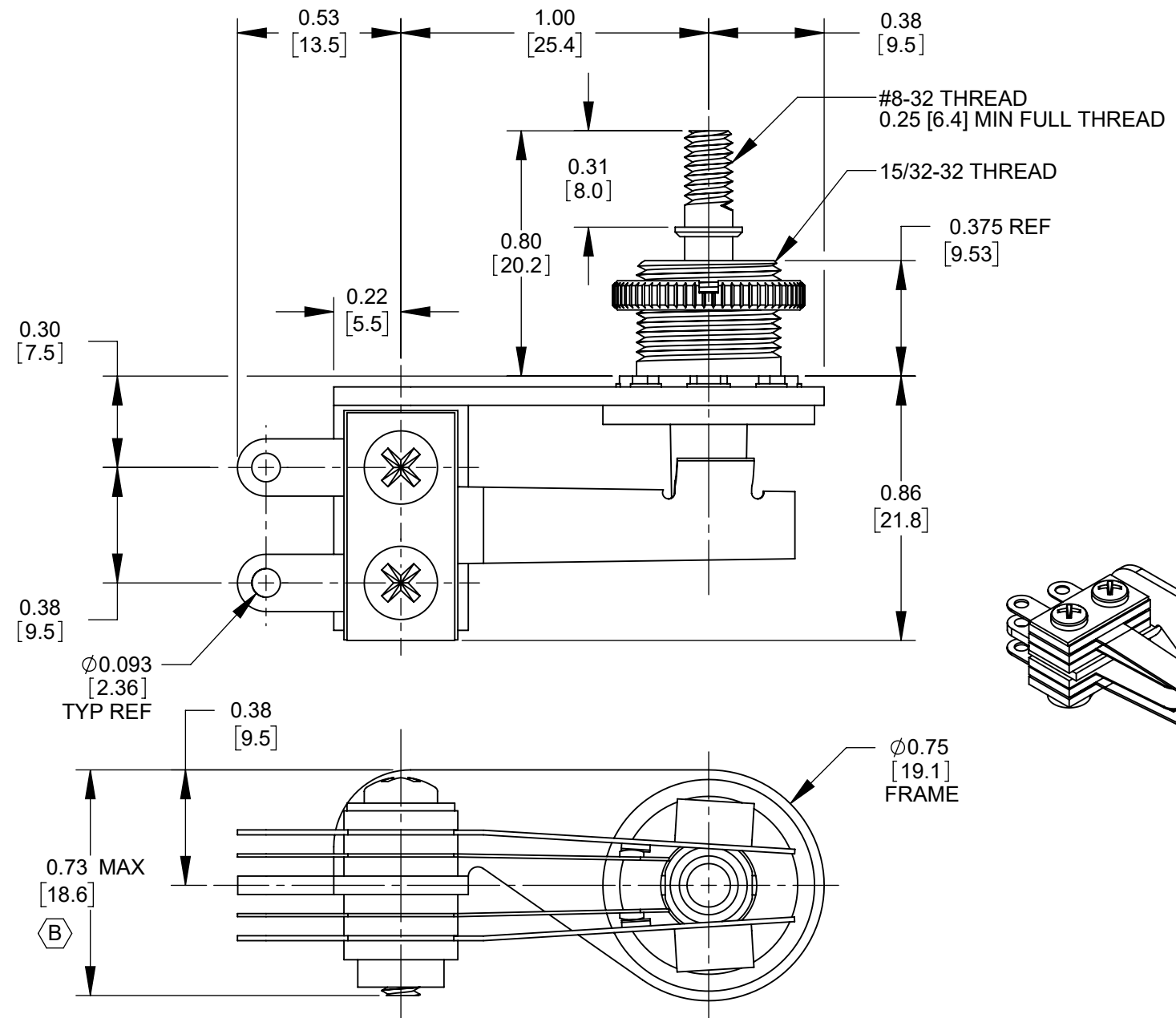




SCHEMATIC



NOTES:

1. MATERIALS:
 FRAME - STEEL, NICKEL PLATED
 SPRINGS - SPRING TEMPERED, NICKEL SILVER
 BUSHING & SHAFT - BRASS, BLACK SATIN CHROME PLATED
 INSULATION - PHENOLIC
 CONTACTS - FINE SILVER
 SCREWS - STEEL, NICKEL PLATED
 SHAFT INSULATOR - NYLON
 TUBING - THERMOPLASTIC
 HARDWARE:
 KNURLED NUT - BRASS, BLACK SATIN CHROME PLATED
2. ELECTRICAL CHARACTERISTICS:
 - CONTACT RESISTANCE: 20 MILLIOHMS MAX
 - CONTACT RATING: 3A, 300W MAX AC NON-INDUCTIVE LOAD
 - LEAKAGE RESISTANCE: 1000 MEGAOHMS OR GREATER
 - DIELECTRIC STRENGTH: 250 VDC
3. HARDWARE SHIPPED UNASSEMBLED.
4. THIS PRODUCT IS RoHS COMPLIANT.

CUSTOMER DRAWING

					THIS DRAWING DESCRIBES A DESIGN CONSIDERED PROPRIETARY IN NATURE, DEVELOPED AND MANUFACTURED BY SWITCHCRAFT INC. AND IS RELEASED ON A CONFIDENTIAL BASIS FOR IDENTIFICATION PURPOSES ONLY.				
					SIZE	WIDTH	MULT	LBS/M	TEMPER
					FINISH			MATERIAL	
					SPEC No.			SPEC No.	
					FIRST USED ON		SCALE		
							2:1		
DATE DRAWN		BY	CHKD		APVD				
2/16/10		RS	RS		TJK				
		2/12/10		04/28/20					
REV					NAME				
ECO NUMBER					12000 SERIES RIGHT-ANGLE LEVER SWITCH				
DATE					3 POSITION LOCKING, RoHS				
BY					PART No.		REV		
APVD					12014X		B		
REVISIONS					DO NOT SCALE DRAWING				