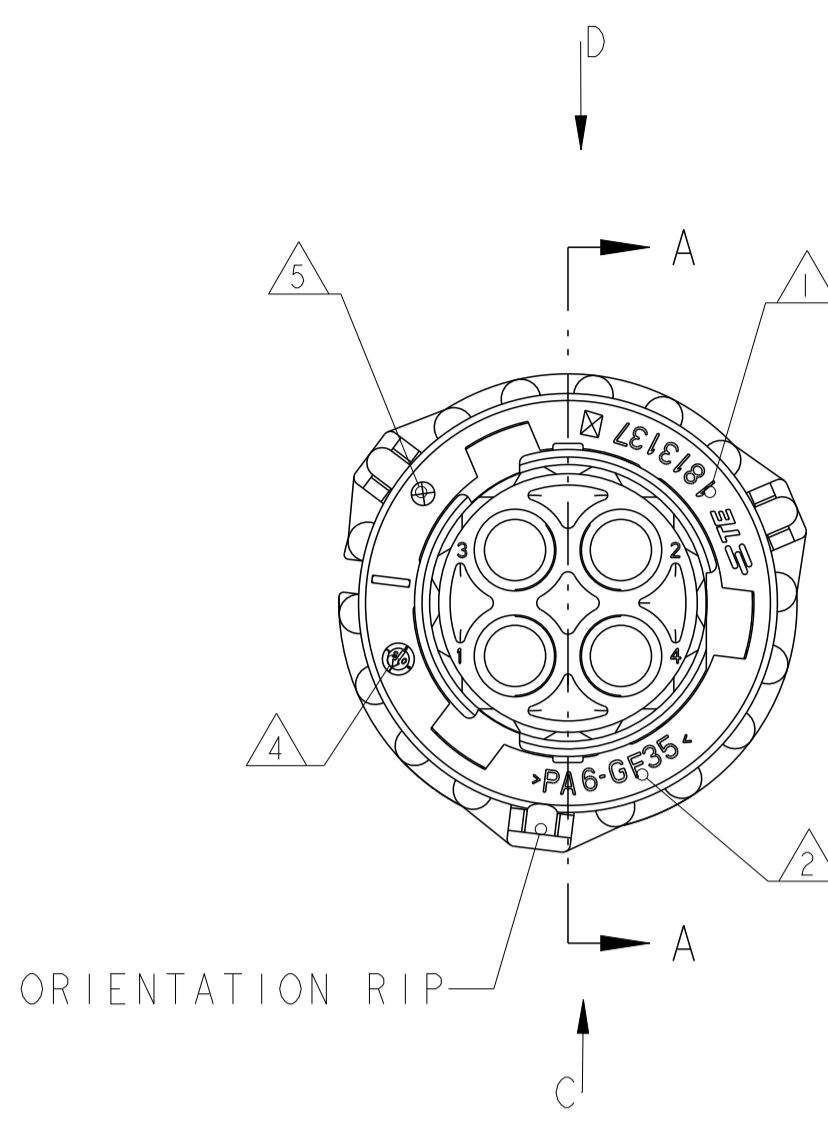
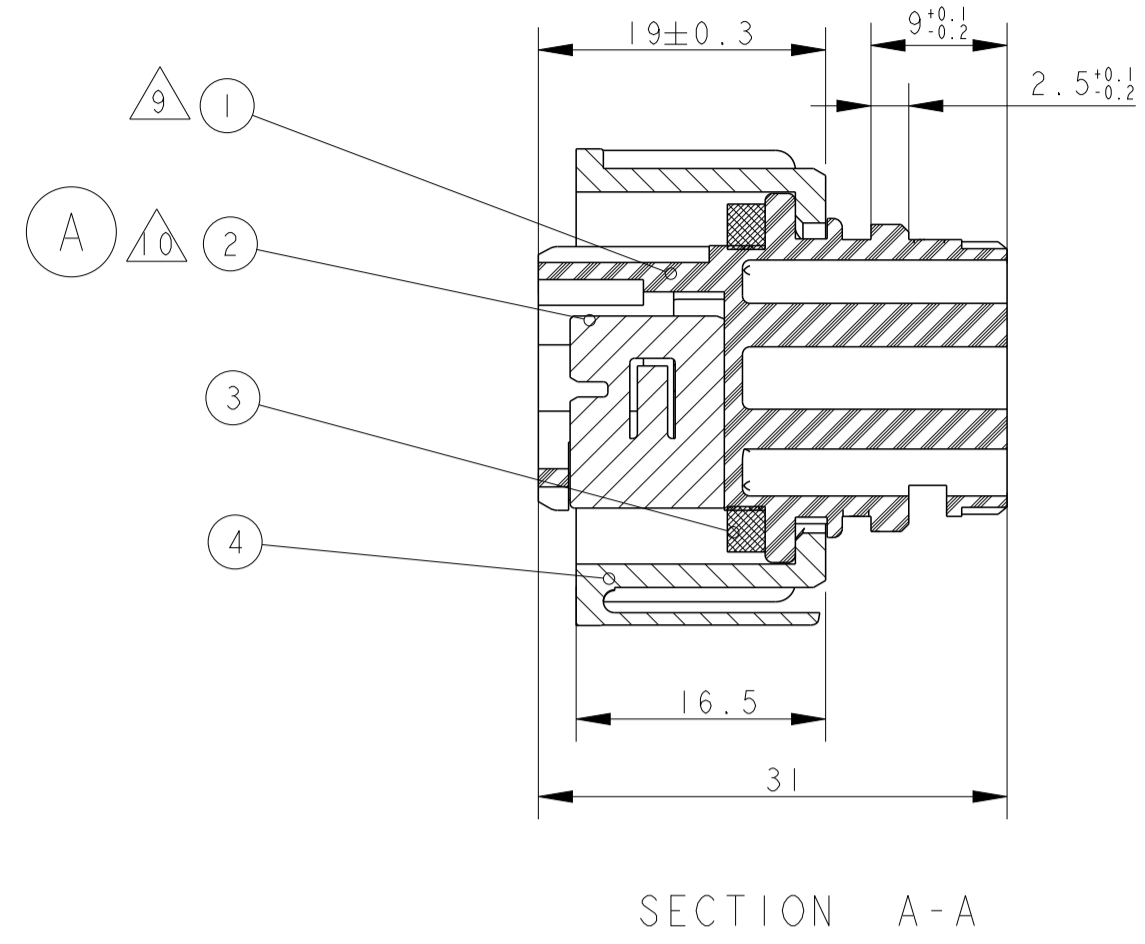


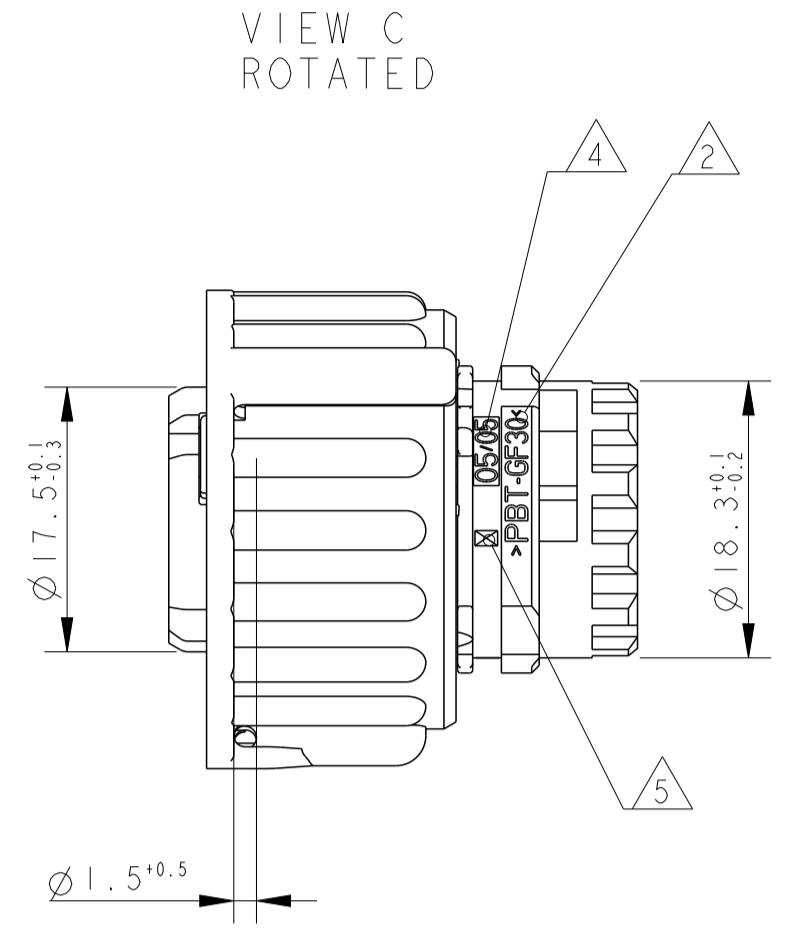
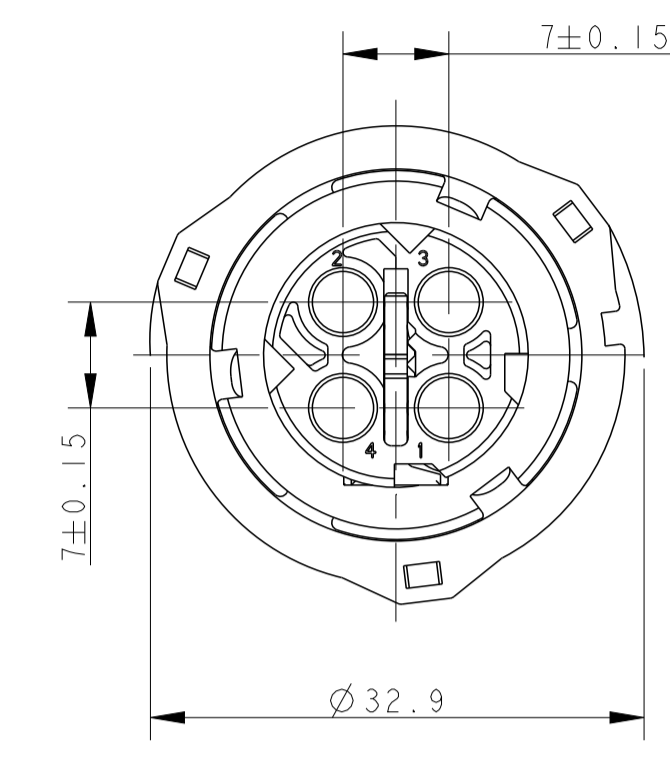
Project No	CA05-007	LOC	ES	DIST	-
REVISIONS					
P	LTN	DESCRIPTION	DATE	DMN	APVD
A		REVISED ECO-13-010505	10APR13	J.L	I.Y
A1		OBSOLETE PNs	01MAR2019	V.T	I.Y
A2		ADD NEW PNs ECR-19-006325	25MAY2019	N.S	I.Y
B		ADD NEW PNs ECR-2023-01-003-E	07MAR2023	M.L	Z.Z



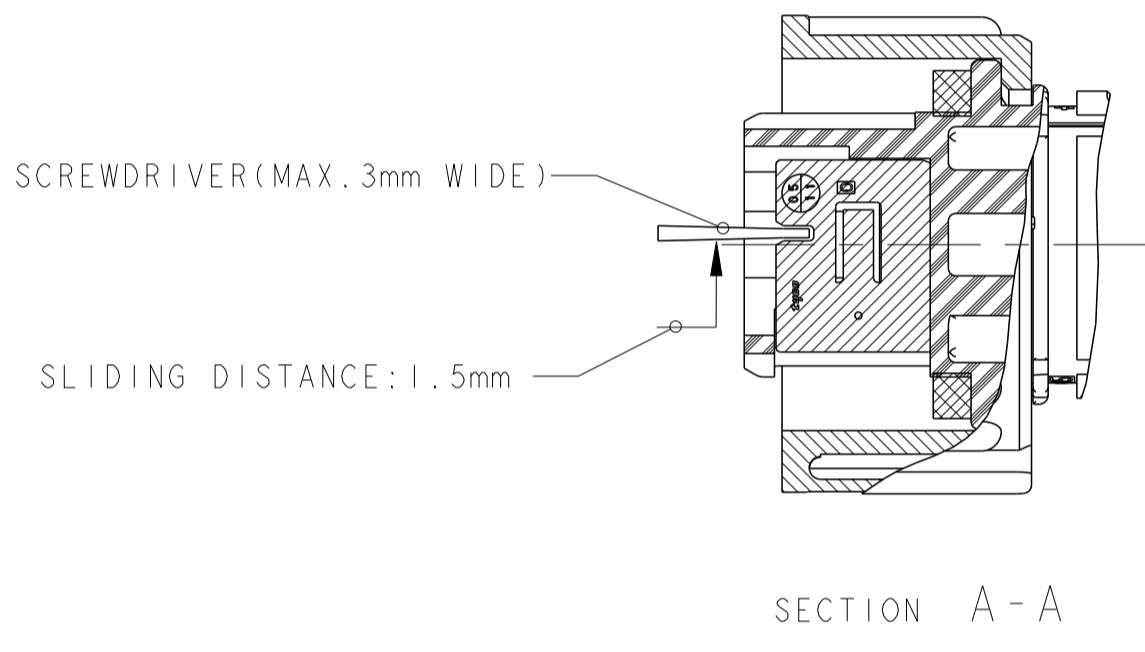
COUPLING RING IN PRE-LOCKED POSITION (FITTING POSITION WITH PIN HOUSING)



SECTION A-A

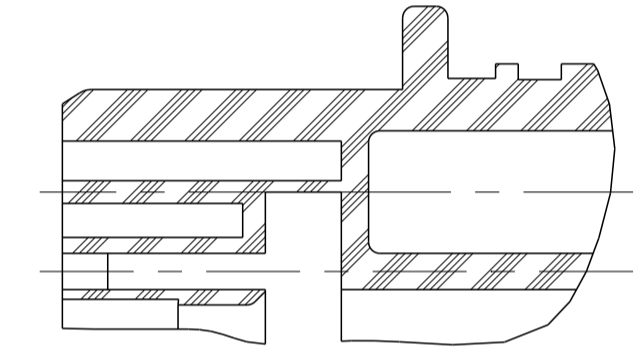


VIEW C ROTATED



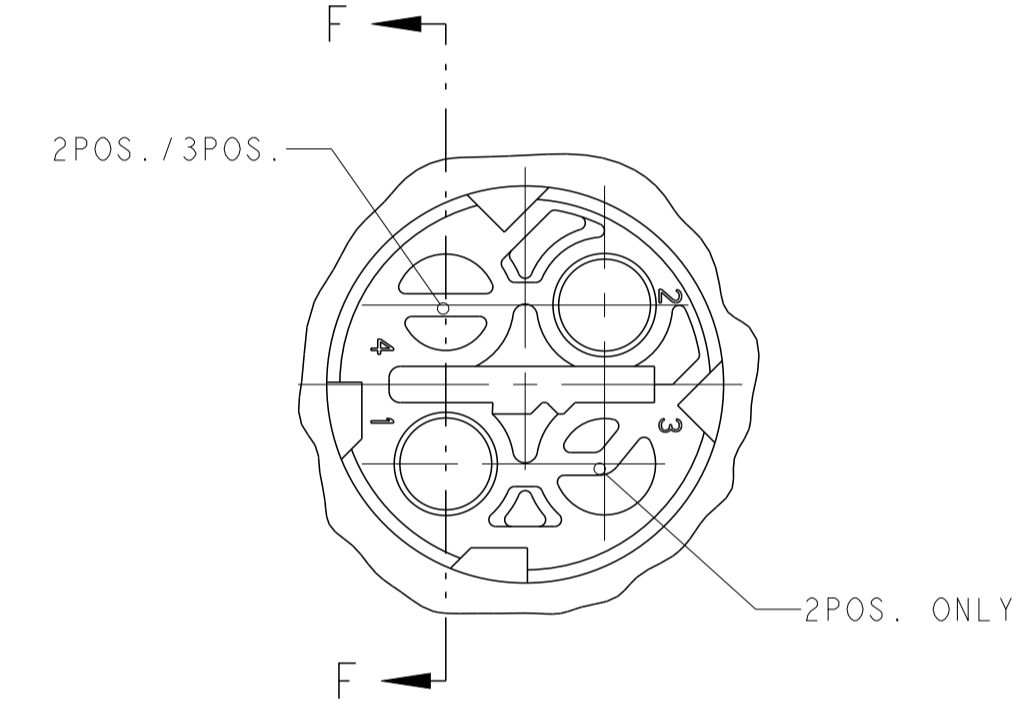
SECTION A-A

SECOND LOCKING DEVICE IN PRE-LOCKED POSITION

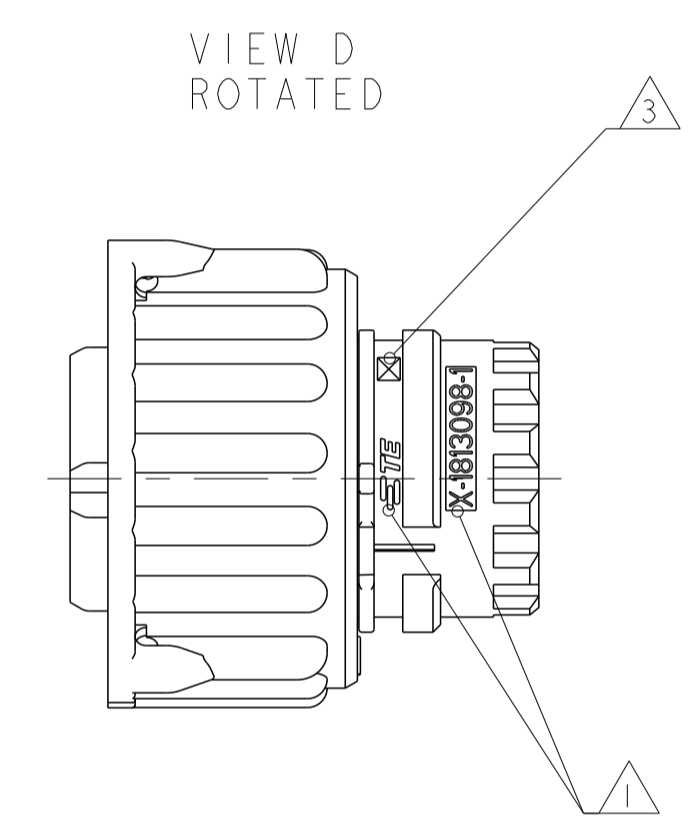


SECTION F-F

SECOND LOCKING DEVICE IN LOCKED POSITION



CLOSED CAVITY OF THE 2POS./3POS. SOCKET HOUSING



VIEW D ROTATED

- NOTES:
- 1 TYCO LOGO AND TYCO NUMBER OF SINGLE PART
 - 2 MATERIAL MARKING, EXCHANGEABLE
 - 3 REVISION OF THE MOULD
 - 4 PRODUCTION DATE
 - 5 CAVITY MARKING
 - 6. FITS TO CONNECTORS ACC. TO DIN 72585/ISO 15170 FORM A AND B AND PIN-HOUSING 2-4POS. TYCO-PN 967402
 - 7. FOR SUITABLE CONTACTS SEE DRAWING: TYCO-PN: 1355065. MAX. WIRE THICKNESS: 2.5mm FLR. FOR SUITABLE SEALS SEE DRAWING: TYCO-PN: 1355070
 - 8. BULK PACKING IN CARDBOARD BOX
 - 9 CODING ACC. TO DIN 72585/ISO15170
 - 10 SECONDARY LOCK IS ONLY AVAILABLE FOR 1-1813099-X, 2-1813099-X, 3-1813099-X, 4-1813099-X. DETAIL SEE TABLE.

8	7	6	5	4	3	2	1	PA6-GF35	BLACK	COUPLING RING	4
								PA6-GF35	BLACK	COUPLING RING	4
								SILICONE RUBBER	ORANGE	SEAL	3
								PA6/6T-GF25	YELLOW	SECOND LOCKING DEVICE	2
								PBT-GF30	BLUE	2POS. SOCKET HOUSING (BLUE)	1
								PBT-GF30	BLUE	3POS. SOCKET HOUSING (BLUE)	1
								PBT-GF30	BLUE	4POS. SOCKET HOUSING (BLUE)	1
								PBT-GF30	GREEN	2POS. SOCKET HOUSING (GREEN)	1
								PBT-GF30	GREEN	3POS. SOCKET HOUSING (GREEN)	1
								PBT-GF30	GREEN	4POS. SOCKET HOUSING (GREEN)	1
								PBT-GF30	GREY	2POS. SOCKET HOUSING (GREY)	1
								PBT-GF30	GREY	3POS. SOCKET HOUSING (GREY)	1
								PBT-GF30	GREY	4POS. SOCKET HOUSING (GREY)	1
								PBT-GF30	BLACK	2POS. SOCKET HOUSING (BLACK)	1
								PBT-GF30	BLACK	3POS. SOCKET HOUSING (BLACK)	1
								PBT-GF30	BLACK	4POS. SOCKET HOUSING (BLACK)	1
								MATERIAL	COLOR	DESCRIPTION	ITEM

THIS DRAWING IS A CONTROLLED DOCUMENT. DWN: A. ZHANG 03JUN2005
CHK: R. ZHOU 25OCT2005

DIMENSIONS: mm
TOLERANCES UNLESS OTHERWISE SPECIFIED: % OF NOMINAL TOLERANCE
0 - P.L.C. ±0.2
1 - P.L.C. ±0.1
2 - P.L.C. ±0.01
3 - P.L.C. ±0.001
4 - P.L.C. ±0.001
ANGLES ±1°00'

MATERIAL: SEE TABLE
FINISH: -
WEIGHT: -

NAME: 2.5mm SOCKET CONNECTOR, 2-4POS WITH SECONDARY LOCKING
PRODUCT SPEC: 108-101006
APPLICATION SPEC: 114-18255-0

SIZE: A1
CAGE CODE: 1813099
DRAWING NO: 100779
SCALE: 3:1
SHEET: 1 OF 1
REV: B

RESTRICTED TO