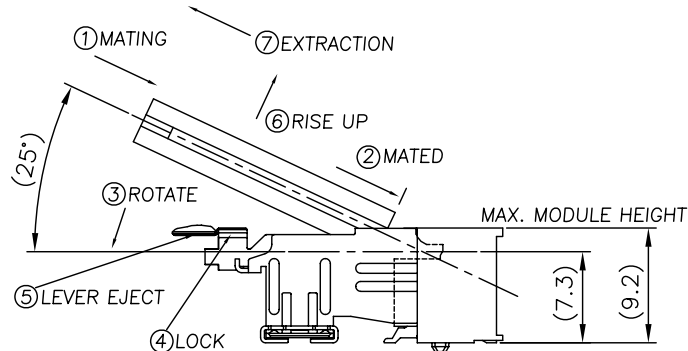
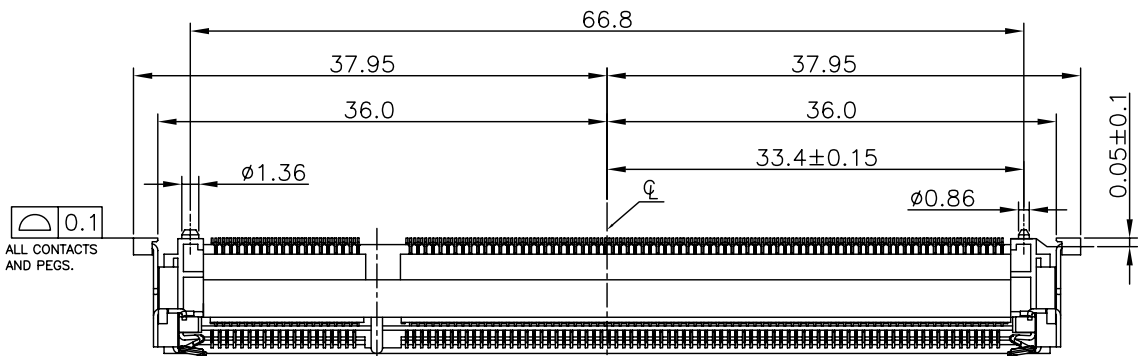


THIS DRAWING IS UNPUBLISHED. RELEASED FOR PUBLICATION AUG, 2006.
 © COPYRIGHT BY TYCO ELECTRONICS CORPORATION. ALL RIGHTS RESERVED.

LOC	DIST	REVISIONS				
P	LTR	DESCRIPTION	DATE	DWN	APVD	
DW	-	D2	ECR-09-007625, Correct general tolerance	03APR09	EL	WK

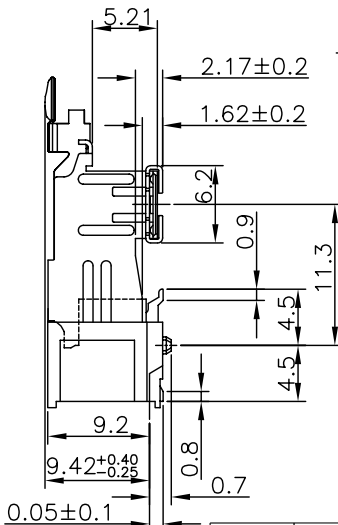
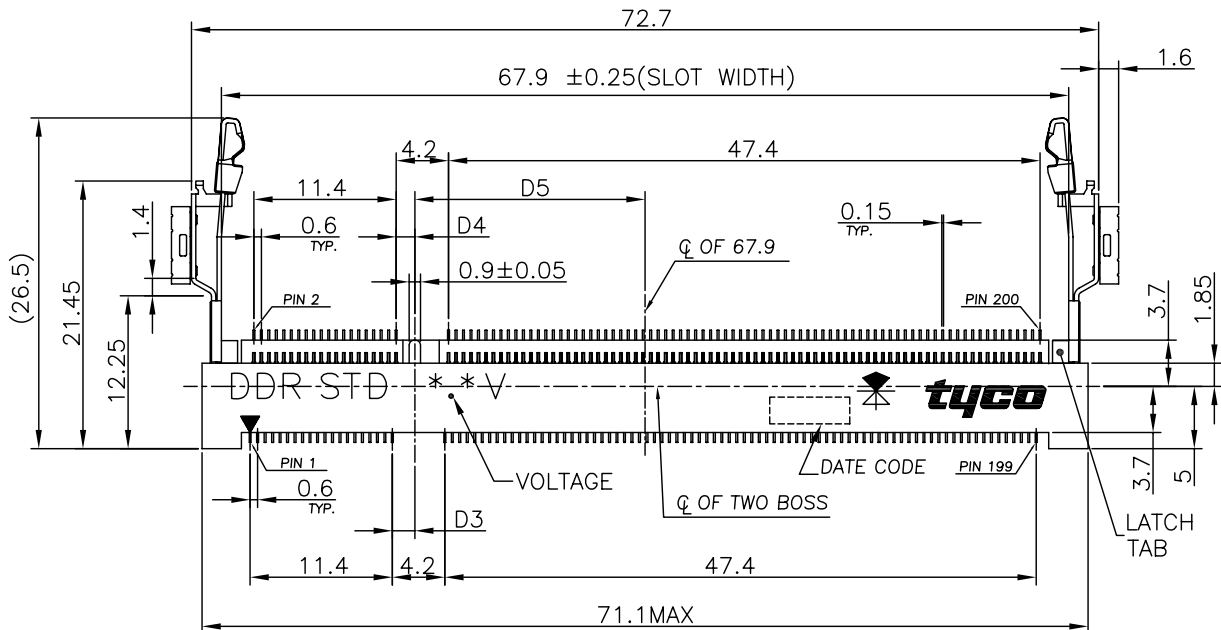
D

D



C

C



HOW TO MATE AND UNMATE
 MATE: ① → ④
 UNMATE: ⑤ → ⑦

B

B

NOTE:
 1. MATERIAL:
 HOUSING: THERMOPLASTIC(LCP), BLACK COLOR UL94V-0
 CONTACT: COPPER-ZINC-TIN.
 LATCH: STAINLESS STEEL
 SOLDER PEG: BRASS
 2. FINISH:
 CONTACT:
 0.05μm[2μ"]MIN. GOLD PLATED OR
 0.76μm[30μ"]MIN. GOLD PLATED ON CONTACT AREA,
 0.38μm[15μ"]MIN. GOLD PLATED ON CONTACT AREA,
 0.05μm[2μ"]MIN. GOLD PLATED ON SOLDER TAIL,
 1.27μm[50μ"]MIN. NICKEL UNDERPLATING ALL OVER.
 SOLDER PEG:
 2.03μm[80μ"]MIN. BRIGHT TIN PLATED,
 1.27μm[50μ"]MIN. NICKEL UNDERPLATING ALL OVER.
 3. REFLOW SOLDER CAPABLE TO 260°C PER TE SPEC. 109-201, CONDITION B.

STANDARD TYPE

WITHOUT	1.8	17.55	2.4	2.7	TAPE REEL	Δ2-1734073-5
					TAPE REEL	Δ2-1734073-3
					TAPE REEL	2-1734073-1
					HARD TRAY	1-1734073-1
					TAPE REEL	4-1734073-1
					HARD TRAY	3-1734073-1
LATCH TAB	VOLTAGE	D5	D4	D3	PACKAGE TYPE	PART NUMBER

A

A

THIS DRAWING IS A CONTROLLED DOCUMENT.

DWN	S. HOU	06SEP2007	Tyco Electronics Corporation Taipei, Taiwan		
CHK	W.J. KE	06SEP2007	Tyco Electronics		
APVD	W.J. KE	06SEP2007	NAME		
PRODUCT SPEC			108-57382		
QUALIFICATION TEST REPORT			501-57415		
WEIGHT			5.2 GRAMS		
CUSTOMER DRAWING			A3 00779 C=1734073		
SCALE			SHEET 1 OF 7		
REV			D2		

4

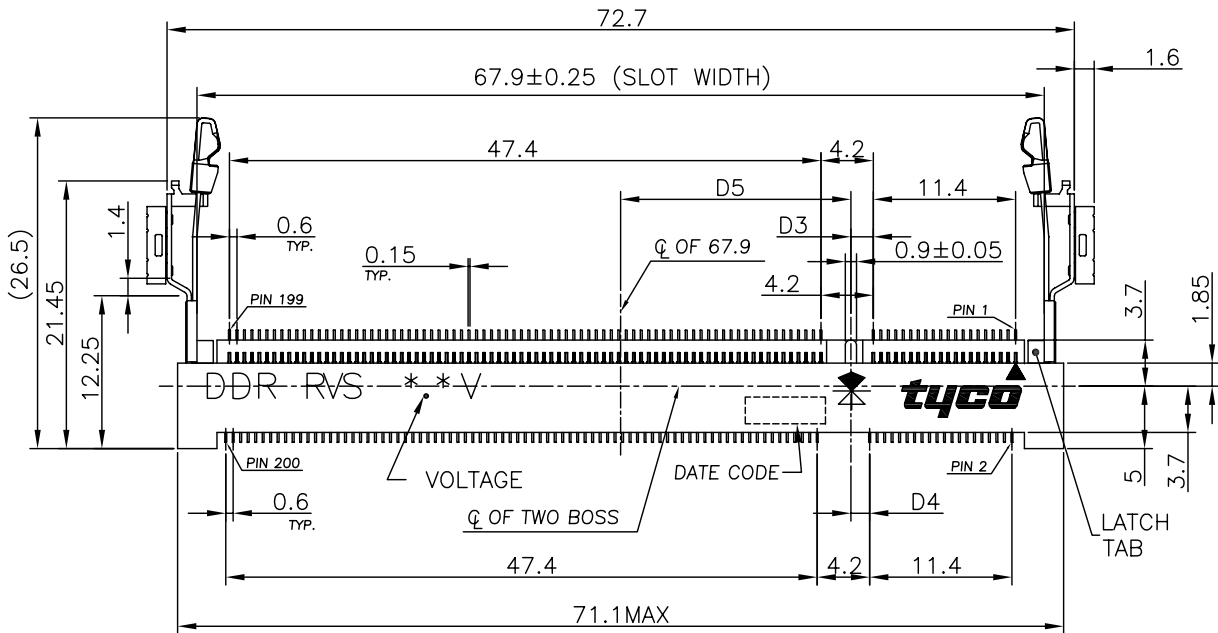
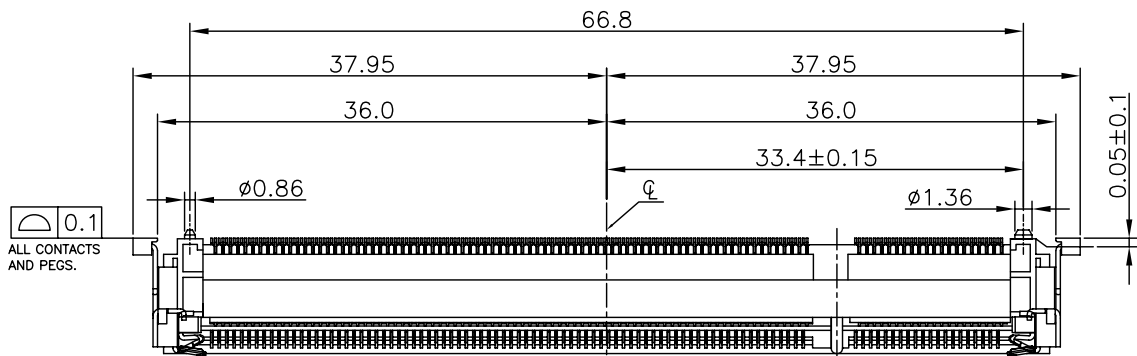
3

2

1

THIS DRAWING IS UNPUBLISHED. RELEASED FOR PUBLICATION AUG, 2006.
 © COPYRIGHT BY TYCO ELECTRONICS CORPORATION. ALL RIGHTS RESERVED.

LOC	DIST	REVISIONS			
P	LTR	DESCRIPTION	DATE	DWN	APVD
DW	-	SEE SHEET 1			

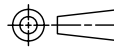


REVERSE TYPE

WITHOUT	VOLTAGE	D5	D4	D3	PACKAGE TYPE	PART NUMBER
1.8	17.55	2.4	2.7	TAPE REEL	A2-1734073-6	
2.5	18.45	1.5	1.8	TAPE REEL	A2-1734073-4	
				TAPE REEL	2-1734073-2	
				HARD TRAY	1-1734073-2	
				TAPE REEL	4-1734073-2	
				HARD TRAY	3-1734073-2	

THIS DRAWING IS A CONTROLLED DOCUMENT.

DIMENSIONS: MM



MATERIAL SEE NOTE

TOLERANCES UNLESS OTHERWISE SPECIFIED:

- 0 PLC ± -
- 1 PLC ± 0.3
- 2 PLC ± 0.25
- 3 PLC ± 0.13
- 4 PLC ± -
- ANGLES ± 3'

FINISH SEE NOTE

DWN	S. HOU	06SEP2007
CHK	W.J. KE	06SEP2007
APVD	W.J. KE	06SEP2007
PRODUCT SPEC	-	-
QUALIFICATION TEST REPORT	-	-
WEIGHT	5.2 GRAMS	-
CUSTOMER DRAWING	-	-

Tyco Electronics Corporation
 Taipei, Taiwan

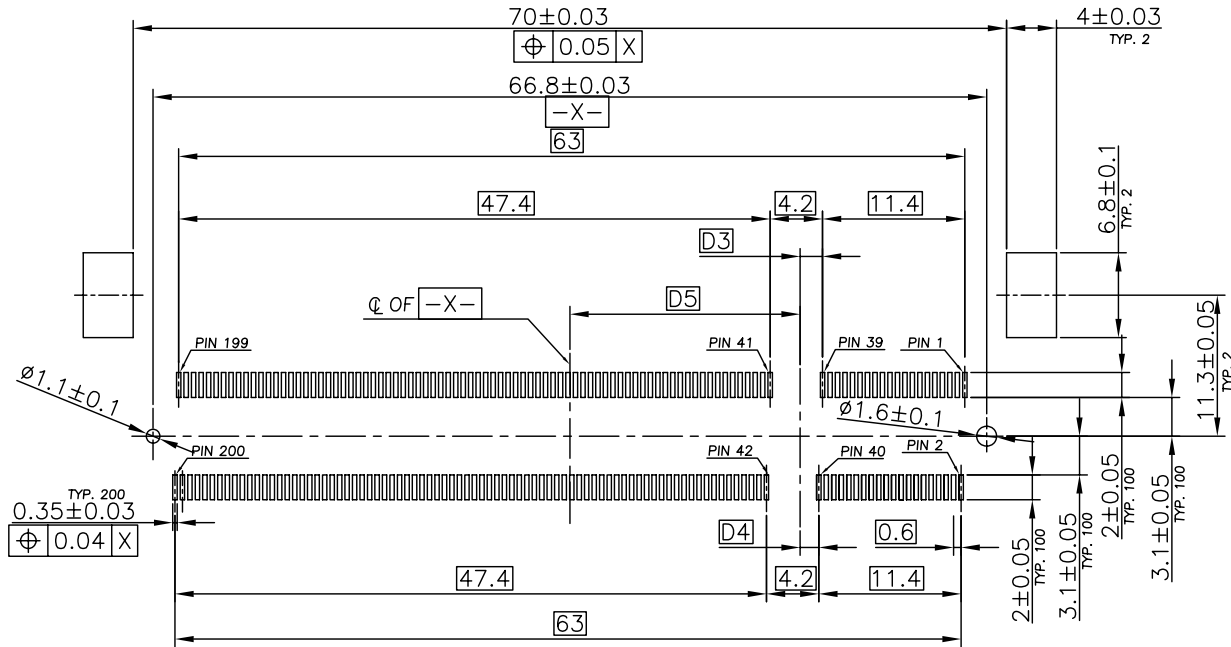
NAME: DDR S.O. DIMM SOCKET, 200P, 9.2 HEIGHT, SMT.

SIZE	A3	CAGE CODE	00779	DRAWING NO	C=1734073	RESTRICTED TO	-
------	----	-----------	-------	------------	-----------	---------------	---

SCALE	-	SHEET	2 OF 7	REV	D2
-------	---	-------	--------	-----	----

THIS DRAWING IS UNPUBLISHED. RELEASED FOR PUBLICATION AUG, 2006.
 © COPYRIGHT BY TYCO ELECTRONICS CORPORATION. ALL RIGHTS RESERVED.

LOC	DIST	REVISIONS			
P	LTR	DESCRIPTION	DATE	DWN	APVD
DW	-	SEE SHEET 1			



RECOMMENDED PCB LAYOUT
CONNECTOR MOUNTING SIDE

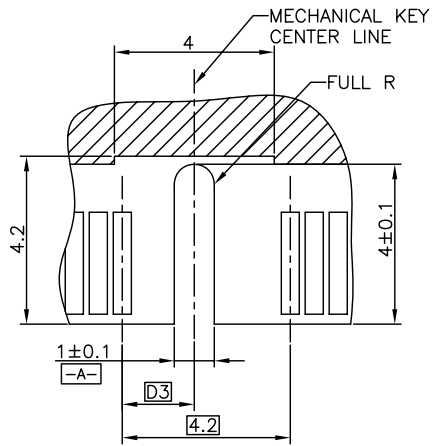
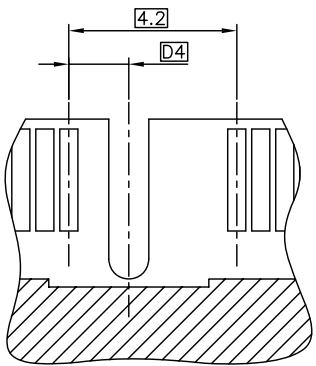
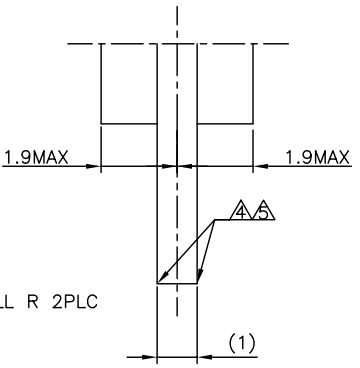
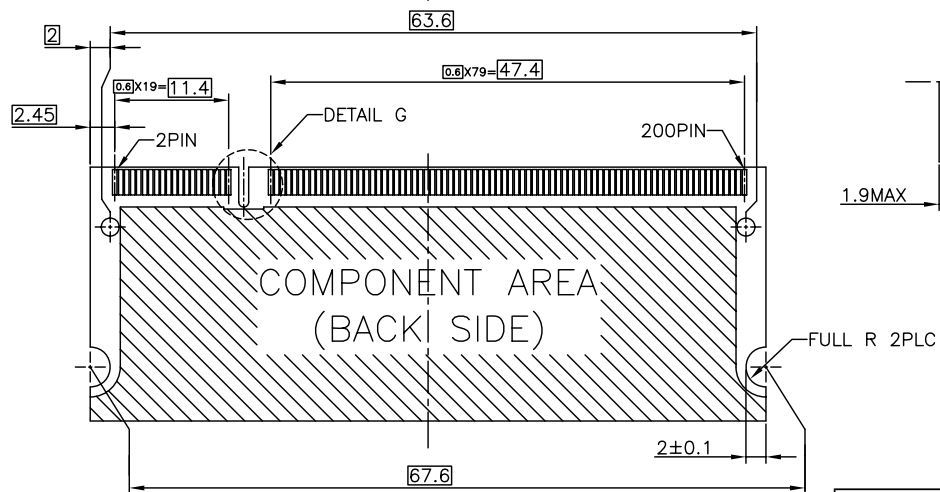
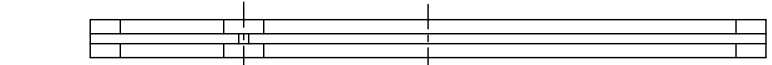
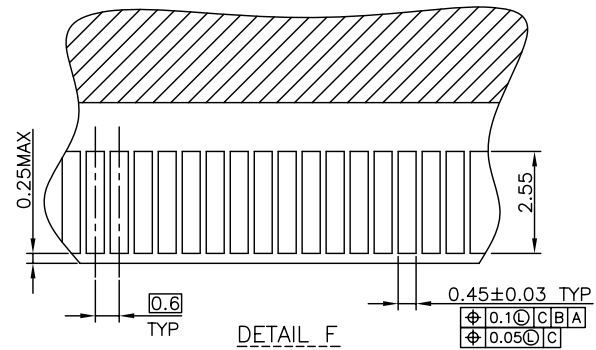
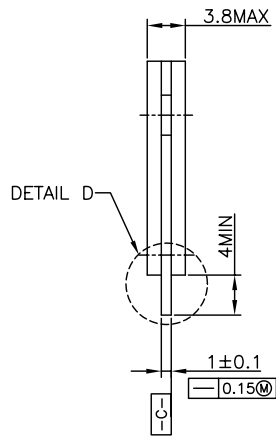
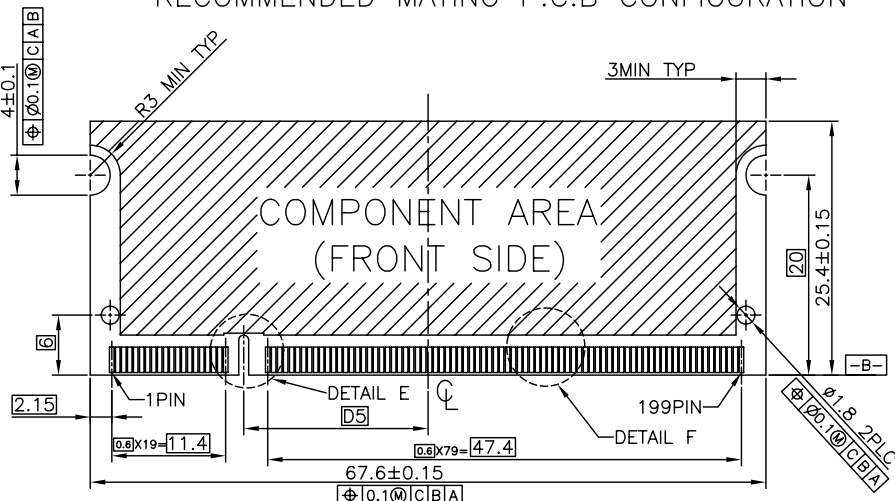
REVERSE TYPE

18.45	1.5	1.8	2.5V
17.55	2.4	2.7	1.8V
D5	D4	D3	PWR. SUP.

THIS DRAWING IS A CONTROLLED DOCUMENT.		DWN S. HOU	06SEP2007	Tyco Electronics Corporation Taipei, Taiwan	
DIMENSIONS: MM		CHK W.J. KE	06SEP2007	NAME	
TOLERANCES UNLESS OTHERWISE SPECIFIED:		APVD W.J. KE	06SEP2007	DDR S.O. DIMM SOCKET, 200P, 9.2 HEIGHT, SMT.	
0 PLC ± -		PRODUCT SPEC		QUALIFICATION TEST REPORT	
1 PLC ± 0.3				WEIGHT	
2 PLC ± 0.25				CUSTOMER DRAWING	SCALE - SHEET 4 OF 7 REV D2
3 PLC ± 0.13					
4 PLC ± -					
ANGLES ± 3'					
MATERIAL SEE NOTE	FINISH SEE NOTE			SIZE A3	CAGE CODE 00779
				DRAWING NO G=1734073	RESTRICTED TO

LOC	DIST	REVISIONS			
P	LTR	DESCRIPTION	DATE	DWN	APVD
DW	-	SEE SHEET 1			

RECOMMENDED MATING P.C.B CONFIGURATION



DETAIL D SCALE 4:1

DETAIL G SCALE 4:1 (BACK SIDE)

DETAIL E SCALE 4:1 (FRONT SIDE)

- NOTE:
 (APPLIED TO SHEET 3)
 1. TOLERANCES ON ALL DIMENSIONS ±0.15 UNLESS OTHERWISE SPECIFIED.
 2. P.C.BOARD THICKNESS APPLIES ACROSS TABS AND INCLUDES PLATING AND/OR MENTAIZATION.
 3. FINISH OF PAD:GOLD PLATING 0.00076MIN OVER ON PLATING 0.002MIN.
 ⚠ NO BURR
 ⚠ CHAMFER 0.25MAX X45° IF EXIST.

THIS DRAWING IS A CONTROLLED DOCUMENT.		DWN S. HOU 06SEP2007	Tyco Electronics Corporation Taipei, Taiwan	
DIMENSIONS: MM		CHK W.J. KE 06SEP2007	NAME	
TOLERANCES UNLESS OTHERWISE SPECIFIED:		APVD W.J. KE 06SEP2007	PRODUCT SPEC	
0 PLC ± - 1 PLC ± 0.3 2 PLC ± 0.25 3 PLC ± 0.13 4 PLC ± - ANGLES ± 3°		QUALIFICATION TEST REPORT		
MATERIAL SEE NOTE		FINISH SEE NOTE		
		WEIGHT -		
		CUSTOMER DRAWING		
		SIZE A3	CAGE CODE 00779	DRAWING NO C=1734073
		RESTRICTED TO		
		SCALE -	SHEET 5 OF 7	REV D2

4

3

2

1

THIS DRAWING IS UNPUBLISHED.

RELEASED FOR PUBLICATION

AUG ,2006.

© COPYRIGHT BY TYCO ELECTRONICS CORPORATION.

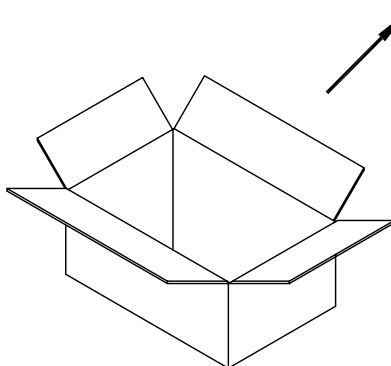
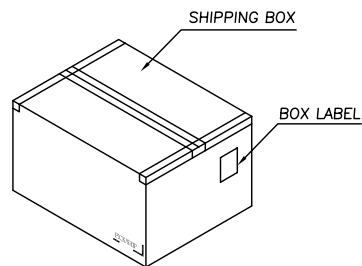
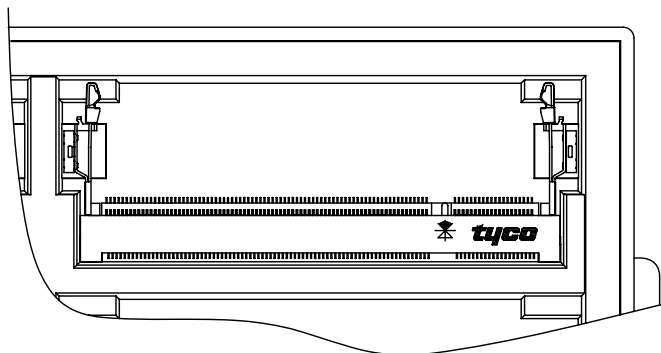
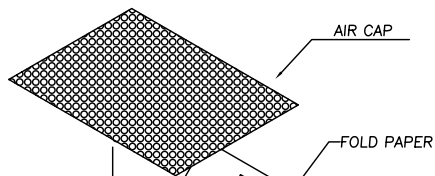
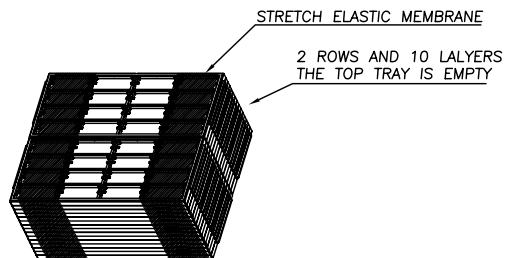
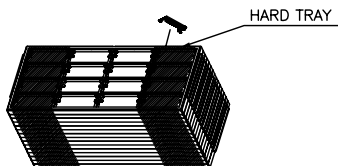
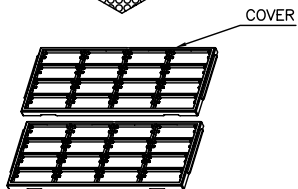
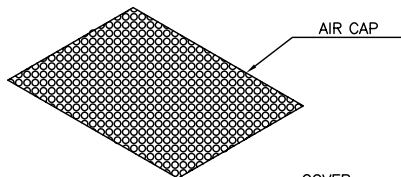
ALL RIGHTS RESERVED.

LOC DW

DIST -

REVISIONS

P	LTR	DESCRIPTION	DATE	DWN	APVD
		SEE SHEET 1			



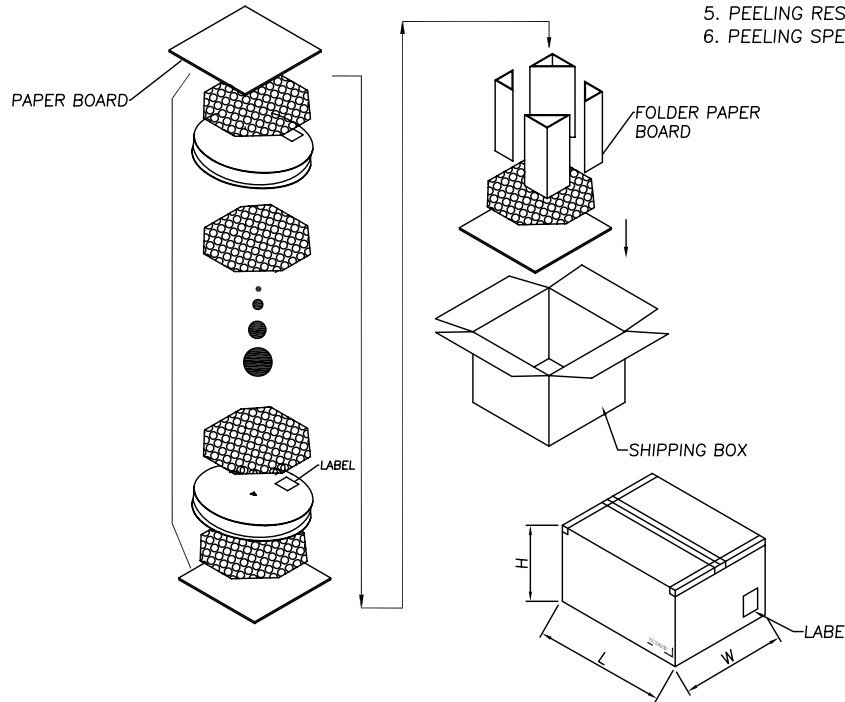
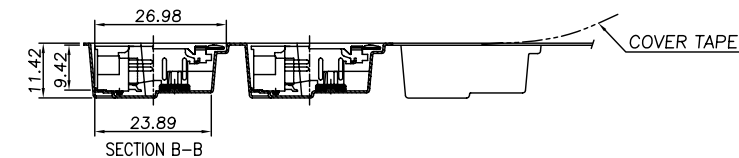
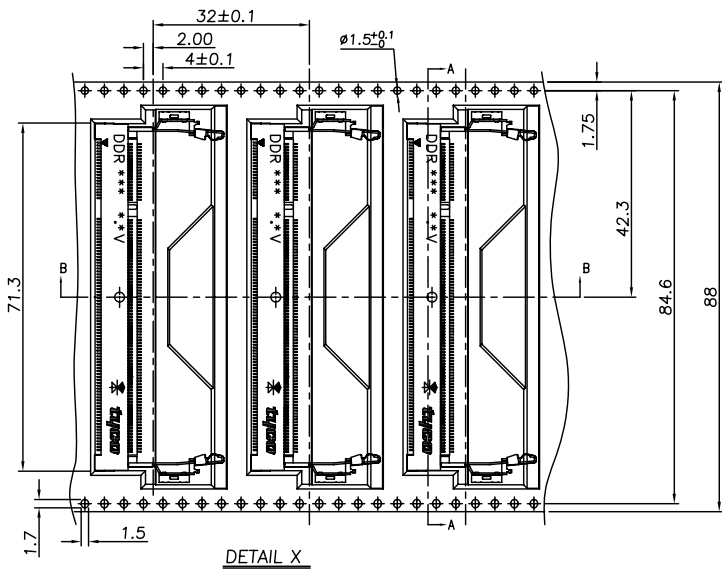
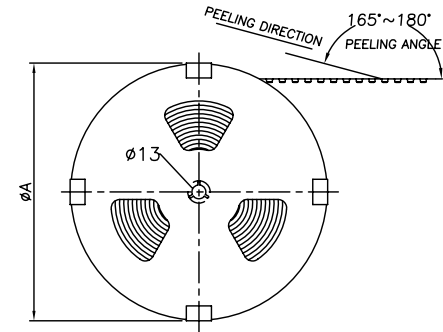
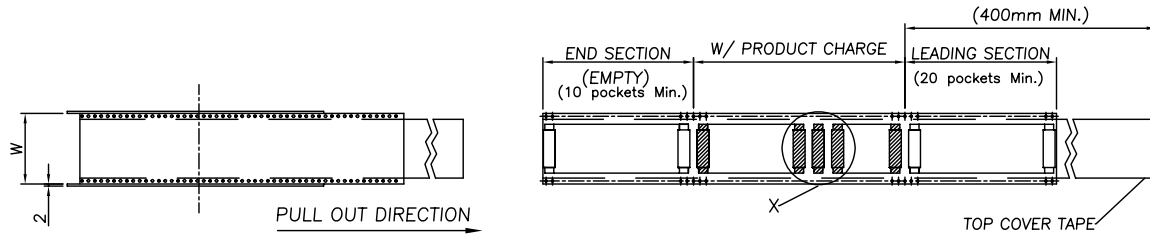
NOTES :

- 1. MATERIAL:
 - 1.1 TRAY: ABS, BLACK COLOR
 - 1.2 SHIPPING BOX: CORRUGATED FIBERBOARD
- 2. DIMENSION:
 - 2.1 TRAY: L=338.95, W=139, H=16.9
 - 2.1 SHIPPING BOX: L=360, W=300, H=195
- 3. QUANTITY:
 - 3.1 PRIMARY PACKING: 16 PCS/TRAY
 - 3.2 SECONDARY PACKING: 20 TRAY/BOX(320PCS)
- 4. WEIGHT:
 - 4.1 NET WEIGHT: 1.664Kg
 - 4.2 GROSS WEIGHT: 8.0Kg

THIS DRAWING IS A CONTROLLED DOCUMENT.		DWN S. HOU	06SEP2007	Tyco Electronics Corporation Tapei, Taiwan	
DIMENSIONS: MM		CHK W.J. KE	06SEP2007	NAME	
TOLERANCES UNLESS OTHERWISE SPECIFIED:		APVD W.J. KE	06SEP2007	DDR S.O. DIMM SOCKET, 200P, 9.2 HEIGHT, SMT.	
0 PLC ± -		PRODUCT SPEC		QUALIFICATION TEST REPORT	
1 PLC ± -		-		-	
2 PLC ± -		-		-	
3 PLC ± -		-		-	
4 PLC ± -		-		-	
ANGLES ± -		-		-	
MATERIAL SEE NOTE		WEIGHT -		SIZE A3	
FINISH SEE NOTE		CUSTOMER DRAWING		CAGE CODE 00779	
				DRAWING NO C=1734073	
				RESTRICTED TO -	
				SCALE - SHEET 6 OF 7 REV D2	

THIS DRAWING IS UNPUBLISHED. RELEASED FOR PUBLICATION AUG, 2006.
 © COPYRIGHT BY TYCO ELECTRONICS CORPORATION. ALL RIGHTS RESERVED.

LOC	DIST	REVISIONS			
P	LTR	DESCRIPTION	DATE	DWN	APVD
DW	—	SEE SHEET 1			



- NOTES:
- MATERIAL :
 - EMBOSSSED CARRIER: PS
 - COVER TAPE: PS
 - SHIPPING BOX: CORRUGATED FIBER
 - DIMENSION :
 - REEL: W=89.4, φA=330
 - SHIPPING BOX: L=335, W=335, H=248
 - QUANTITY :
 - PRIMARY PACKING: 150PCS/REEL
 - SECONDARY PACKING: 2 REELS/BOX(300PCS)
 - WEIGHT :
 - NET WEIGHT: 0.78Kg/REEL, 1.56Kg/BOX.
 - GROSS WEIGHT: 1.2Kg/REEL, 5.0Kg/BOX.
 - PEELING RESISTANCE: 0.1~0.7N(10.2gf~71.4gf).
 - PEELING SPEED: 300mm/minutes.

THIS DRAWING IS A CONTROLLED DOCUMENT.		DWN S. HOU	06SEP2007	Tyco Electronics Corporation Taipei, Taiwan	
DIMENSIONS: MM		CHK W.J. KE	06SEP2007	NAME DDR S.O. DIMM SOCKET, 200P, 9.2 HEIGHT, SMT.	
TOLERANCES UNLESS OTHERWISE SPECIFIED:		APVD W.J. KE	06SEP2007	SIZE A3	CAGE CODE 00779
0 PLC ± -		PRODUCT SPEC	—	DRAWING NO G=1734073	RESTRICTED TO —
1 PLC ± 0.3		QUALIFICATION TEST REPORT	—	SCALE — SHEET 7 OF 7 REV D2	
2 PLC ± 0.25		WEIGHT	—		
3 PLC ± 0.13		CUSTOMER DRAWING			
4 PLC ± -					
4 PLG ANGLES ± 3'					
MATERIAL SEE NOTE	FINISH SEE NOTE				