

POWR-GARD® Fuses

CNN_E-U Series Lift Truck

80 V dc • Very Fast-Acting • 100 & 150 A



Description

The CNN_E-U fuses offer 3,000 A interrupting rating in the same physical size as the traditional CNN and CNN_E series. The CNN_E-U fuses are rated for applications up to 80 V dc and are considered very fast-acting.

Features & Benefits

- Up to 80 V dc protection
- Up to 3,000 A interrupting rating
- Compact size saves space
- RoHS compliant and lead (Pb) free

Applications

- Lift trucks
- Scissor lifts
- Pallet movers
- Low voltage battery powered equipment
- Data center

Specifications

Voltage Ratings	80 V dc
Ampere Ratings	100 A, 150 A
Max. Interrupting	3,000 A
Environmental	RoHS Compliant, Lead (Pb) Free
Country of Origin	Mexico

Certification & Compliance

cURus

cURus (File E71611)

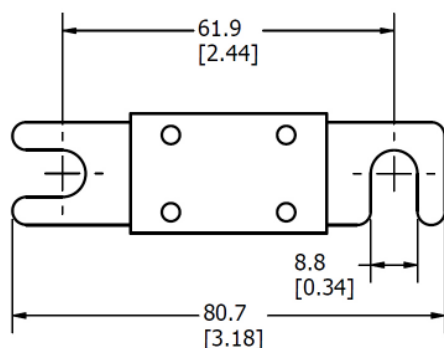
POWR-GARD® Fuses

CNN_E-U Series Lift Truck

Ordering Information

SERIES	AMP	CATALOG NUMBER	PRODUCT MARKING	PACKING QUANTITY	ORDERING NUMBER
CNN_E-U	100	CNN100E-U	CNN100E-U	100	0CNN100E.HXU
CNN_E-U	150	CNN150E-U	CNN150E-U	100	0CNN150E.HXU

Dimensions Inches (mm)



Disclaimer Notice – Information furnished is believed to be accurate and reliable. However, users should independently evaluate the suitability of and test each product selected for their own applications. Littelfuse products are not designed for, and may not be used in, all applications. Read complete Disclaimer Notice at www.littelfuse.com/product-disclaimer.