

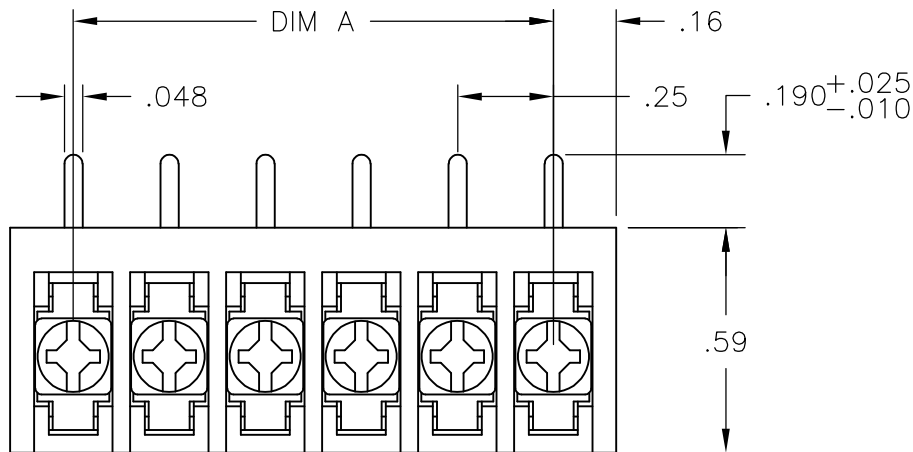
THIS DRAWING IS UNPUBLISHED. QUELLE RECHTSVERHALTEN BEI WEITERGEBUNG GRIPRODOTTO  
 RELEASED FOR PUBLICATION. TUTTIL DIRITTI RISERVATI. TUTTOS I DIRITTI RISERVATI. TODOS LOS DERECHOS RESERVADOS. ALL RIGHTS RESERVED. ~~QUESTO DOCUMENTO E' UN DOCUMENTO CONTROLLATO.~~  
 © COPYRIGHT - By -

LOC FT	DIST 0	REVISIONS		
P	LTR REV	DESCRIPTION	DATE	DWN APRRO
	F	REVISED PER ECO-11-023401	01DEC11	KH MS

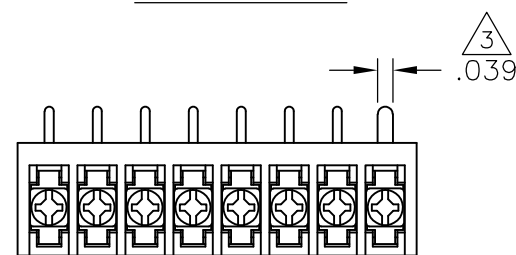
MATERIAL:  
 HOUSING: THERMOPLASTIC, UL94V-0, BLACK.  
 TERMINAL: BRIGHT TIN PLATED, COPPER ALLOY.  
 M3 SCREWS: ZINC PLATED STEEL.  
 ELECTRICAL:  
 RATED CURRENT: 10A.  
 OPERATING VOLTAGE: 300V.  
 WIRE RANGE: 16-30 AWG.

MECHANICAL:  
 PITCH (TERMINAL SPACING): .250"  
 OPERATING TEMP.: 120°C MAX.

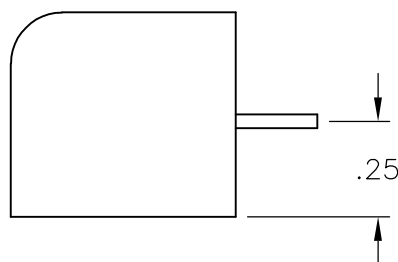
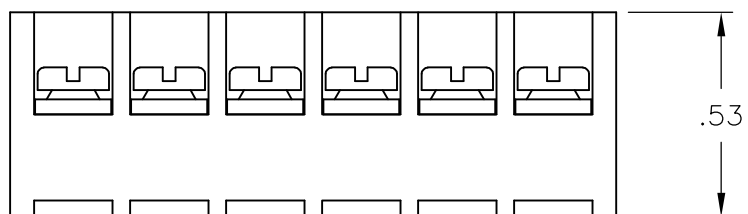
- ① SEE FIGURE.
- ② M3 SCREWS BOTTOMED.
- ③ RECOMMENDED PCB HOLE DIAMETER: .090".
- ④ PRELIMINARY PART NUMBER.
- ⑤ OBSOLETE PARTS: OBSOLETE CIS STREAMLINING PER D.RENAUD/D.SINISI



1-1546119-4

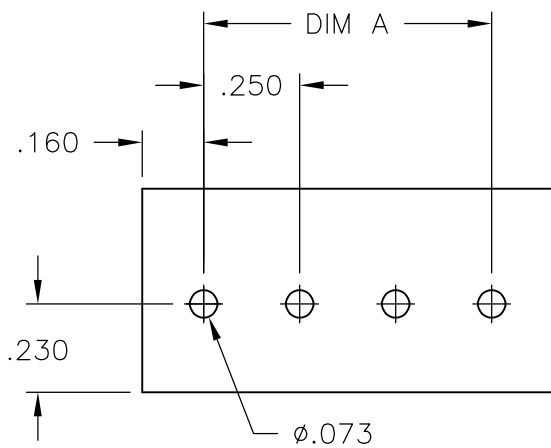


3-1546099-2



- ⑤ ① OBSOLETE
- ④ ①
- ⑤ ② OBSOLETE

DIM "A"	NO OF POS	CATALOG NUMBER	TE PART NO.
7.25	30	3PCR-30-006	3-1546099-0
7.00	29	3PCR-29-006	2-1546099-9
6.75	28	3PCR-28-006	2-1546099-8
6.50	27	3PCR-27-006	2-1546099-7
6.25	26	3PCR-26-006	2-1546099-6
6.00	25	3PCR-25-006	2-1546099-5
5.75	24	3PCR-24-006	2-1546099-4
5.50	23	3PCR-23-006	2-1546099-3
5.25	22	3PCR-22-006	2-1546099-2
5.00	21	3PCR-21-006	2-1546099-1
4.75	20	3PCR-20-006	2-1546119-0
4.50	19	3PCR-19-006	1-1546119-9
4.25	18	3PCR-18-006	1-1546099-8
4.00	17	3PCR-17-006	1-1546099-7
3.75	16	3PCR-16-006	1-1546099-6
3.50	15	3PCR-15-006	1-1546099-5
3.25	14	3PCR-14-006	1-1546099-4
3.00	13	3PCR-13-006	1-1546099-3
2.75	12	3PCR-12-006	1-1546119-7
2.50	11	3PCR-11-006	1-1546119-6
2.25	10	3PCR-10-006	1-1546119-5
2.00	9	3PCR-09-256	1-1546119-4
2.00	9	3PCR-09-006	1-1546119-3
1.75	8	3PCR-08-310	3-1546099-2
1.75	8	3PCR-08-006	1-1546119-2
1.50	7	3PCR-07-006	1-1546119-0
1.25	6	3PCR-06-302	3-1546099-1
1.25	6	3PCR-06-006	1-1437646-2
1.00	5	3PCR-05-006	1437646-9
.75	4	3PCR-04-006	1546119-8
.50	3	3PCR-03-006	1546099-1
.25	2	3PCR-02-006	1546119-5



RECOMMENDED PCB LAYOUT

THIS DRAWING IS A CONTROLLED DOCUMENT.		DWN/DESIGNED S. SCHLEGEL 4/22/03	TE Connectivity	
DIMENSIONS: INCHES		CHK/CONTROLLED S. YODER 6/18/02	NAME D. RENAUD	
TOLERANCES UNLESS OTHERWISE SPECIFIED: 0 PLC/DWG: ± - 1 PLC/DWG: ± - 2 PLC/DWG: ± .02 3 PLC/DWG: ± .010 4 PLC/DWG: ± - ANGLES/ANGLES ± -		APVD/APPROVED S. YODER 6/18/02	PRODUCT SPEC 3PCR-XX-006 ASSEMBLY	
MATERIAL MATERIE		APPLICATION SPEC S. YODER/6/18/02	SIZE A3	RESTRICTED TO RESERVED
FINISH/OBERFLAECHE/FARBE ACABAMENTO		WEIGHT PESO APPROX. -	CAGE CODE 00779	DRAWING NO. G-1437646-9
CUSTOMER DRAWING		SCALE AS SHOWN	SHEET 1 OF 1	REV F