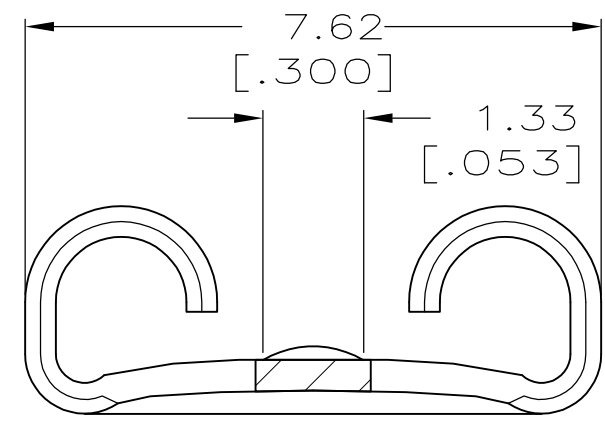
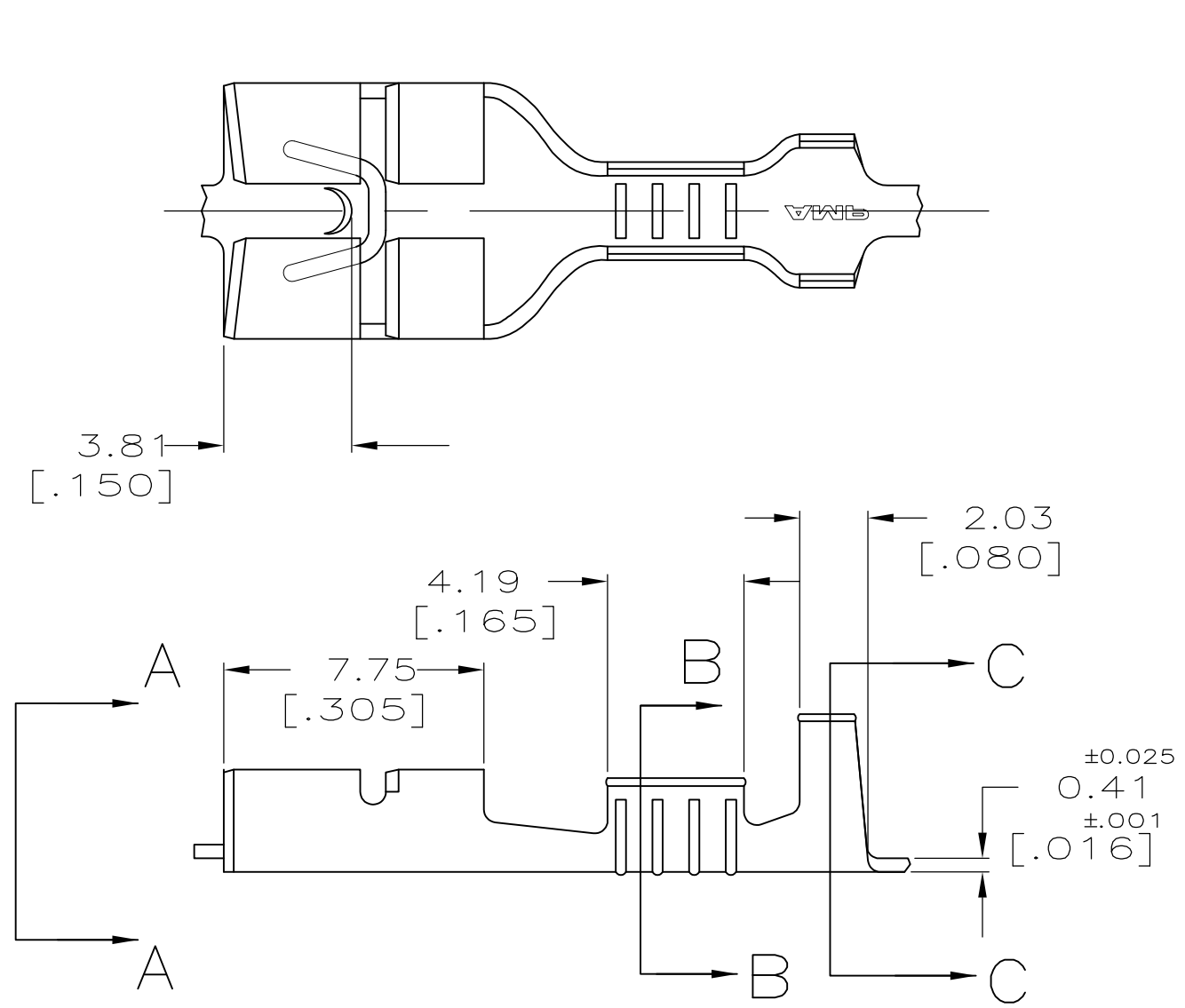


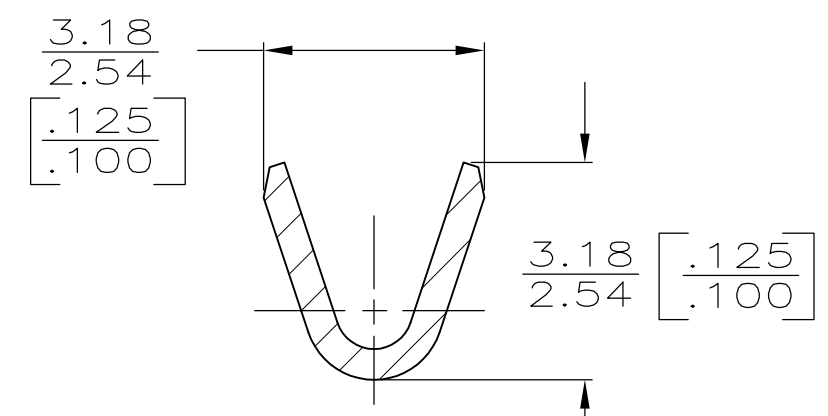
THIS DRAWING IS UNPUBLISHED. RELEASED FOR PUBLICATION  
 © COPYRIGHT - By - ALL RIGHTS RESERVED.

LOC	DIST	REVISIONS					
AF	50	P	LTR	DESCRIPTION	DATE	DWN	APVD
		D		REVISED PER ECR-12-013518	23NOV2012	KH	PD

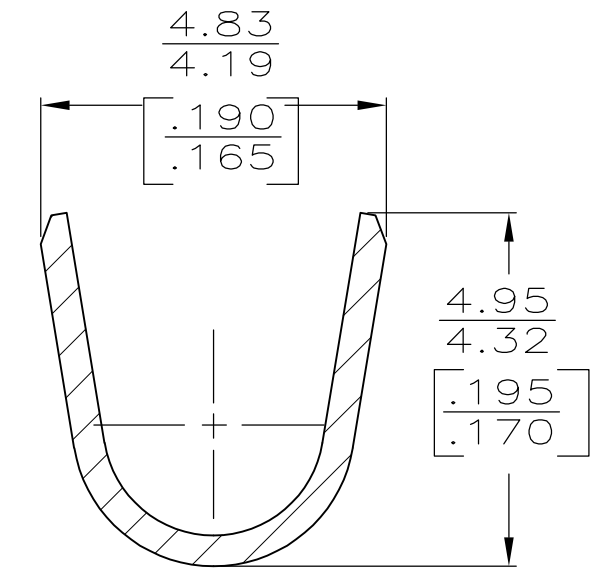
1 CONTINUOUS STRIP ON REELS



VIEW A-A  
 SCALE 10:1



SECTION B-B  
 SCALE 10:1



SECTION C-C  
 SCALE 10:1

2.29-3.30 [.090-.130] DIA	0.3-0.8mm <sup>2</sup> [22-18] AWG	0.813 [.032]	63693-1
INSULATION RANGE	WIRE SIZE	MATING TAB THK ±0.025 [.001]	PART NO

F OR 0	3.30 [.130]	5.59 [.220]	F	2.29 [.090]	1.42 [.056]	0.8mm <sup>2</sup> [18]
					1.30 [.051]	0.5mm <sup>2</sup> [20]
					1.24 [.049]	0.3mm <sup>2</sup> [22]
TYPE	WIDTH	STRIP LENGTH ±0.38 ±[.015]	TYPE	WIDTH	HEIGHT ±.051 [±.002]	WIRE
INSUL BARREL CRIMP			WIRE BARREL CRIMP			

THIS DRAWING IS A CONTROLLED DOCUMENT.

DIMENSIONS: mm [INCHES]	TOLERANCES UNLESS OTHERWISE SPECIFIED:	DWN JR RUTH 7/16/93	TE Connectivity RECEPTACLE, FASTON, 6.35 [.250] SERIES
	0 PLC ± -	CHK P FORTNEY 7/16/93	
	1 PLC ± -	APVD C MEYERS 7/16/93	
	2 PLC ± 0.25 [.010]	PRODUCT SPEC -	
	3 PLC ± -	APPLICATION SPEC 114-2036	NAME
	4 PLC ± -	WEIGHT -	SIZE
	ANGLES ± -	CUSTOMER DRAWING	CAGE CODE
MATERIAL BRASS	FINISH -	SCALE 5:1	DRAWING NO C-63693
		SHEET 1 OF 1	RESTRICTED TO -
		REV D	