



SPECIFICATIONS

| Model | Stroke mm | Max Energy Absorption J(kgf·m) | Max Equiv. Mass kg(kgf) | Range of Impact Rate m/s | Max Drag N(kgf) |
|------------|-----------|--------------------------------|-------------------------|--------------------------|-----------------|
| FL-1214H-C | 14 | 5.4(0.55) | 30(30) | 0.3~3 | 1,156(118) |

COMMON SPECIFICATIONS

| Max Cycle Rate cycle/min | Max Energy Absorption per min. J/min(kgf·m/min) | Extension Force N(kgf) | Operating Temp. C° | Mass g |
|--------------------------|---|------------------------|--------------------|--------|
| 60 | 98(10) | 12.7(1.3) or lower | -5~70 | 49 |

PRECAUTIONS FOR USE

- Do not use this product without carefully reading the attached owner's manual.
- We recommend that you use it with an external stopper (Stopper nut OP-020KB).
- Ensure that sufficient mounting strength is secured for this product. (As a guideline, it should be 2 to 3 times the maximum drag listed in the catalogue.)
- Do not use this product in a vacuum or a location where it may come in contact with oil.
- Ensure that an eccentric load is not applied to the soft absorber. (Allowable eccentric angle: $\pm 2.5^\circ$)

ADJUSTMENT METHOD

- To adjust, turn the adjustment knob located at the bottom of the main unit.
- Because the adjustment can be done in an analog manner, a value between two integers on the indicator can be set.
- Once the adjustment is complete, secure with a lock screw using a hex wrench.

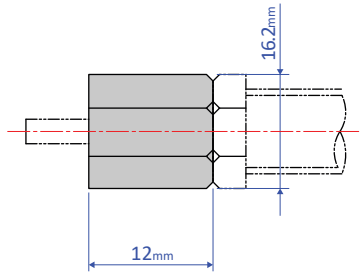
CHARACTERISTICS

- With an adjustable multiple-orifice structure, an optimal impact absorption can be achieved by making adjustments, even under variable operating conditions.
- This product is a long-stroke type that is suitable for high-speed (3m/s) collisions.

OPTIONAL PARTS

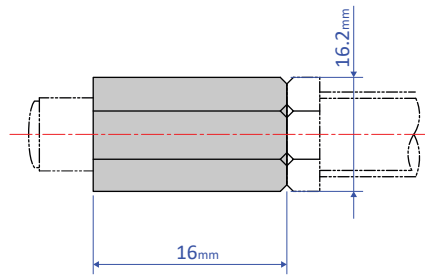
Stopper nut OP-020KB

OP-020KB-S
(without cap)



Mass 6

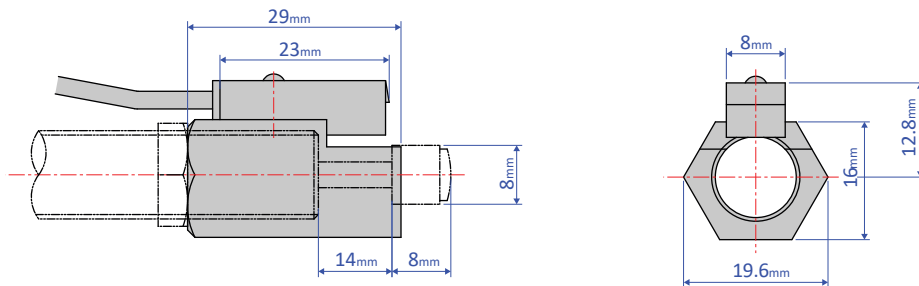
OP-020KB-C
(with cap)



Mass 8

Standard nuts are sold separately as well - M12 nut

Holder with a switch OP-030KB



Mass 38