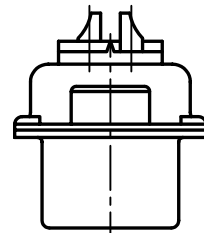
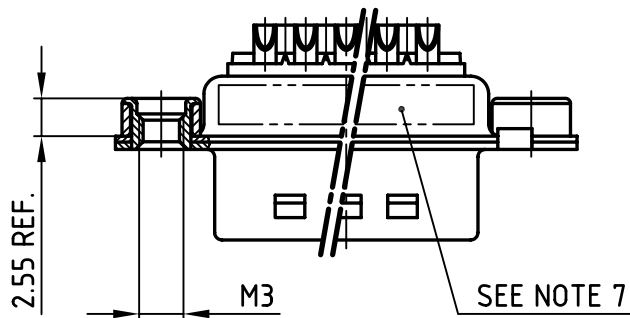
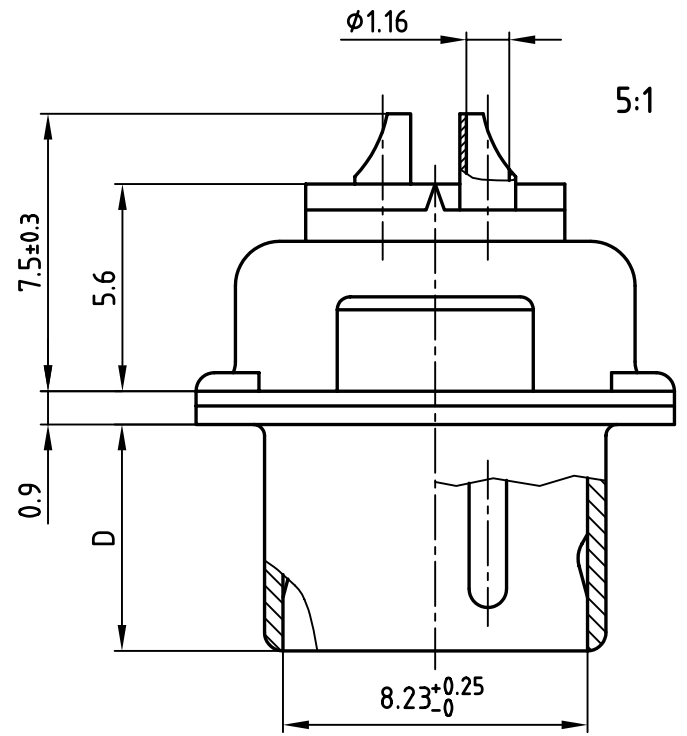
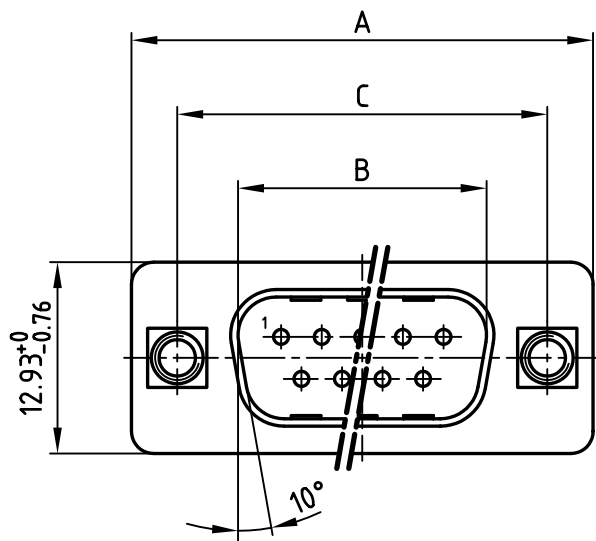


used for: D-SUB



POS.	A _{-0.76}	B _{+0.25}	C	D _{-0.3}	Part No.
9	31.19	16.79	25.00 ^{+0.12} _{-0.13}	6.12	163A11319X
15	39.52	25.12	33.30^{+0.15}	6.12	163A11329X
25	53.42	38.84	47.04 ^{±0.13}	5.99	163A11339X
37	69.70	55.30	63.50 ^{±0.13}	5.99	163A11349X

16K1A3716

NOTES:

- METALSHELLS: STEEL; min. 320µ" TIN
- INSULATORS: PBT GF UL 94 V-0, BLACK
- CONTACTS: COPPER ALLOY
PLATING: 8µ" HARD GOLD OVER min. 50µ" NICKEL
SOLDER CUP ACCEPTS CABLE AWG 20
- THREADED INSERT: COPPER ALLOY; min. 200µ" TIN over 80µ" NICKEL
- COLLAR: COPPER ALLOY; min. 200µ" TIN over 80µ" NICKEL
- MAXIMUM TORQUE VALUE FOR THREAD: 6" LBS
- CONNECTOR IS PART MARKED: PART-NO. CONEC ABC



APPROVAL # FREIGABE # DEBLOCAGE # AUTOR/ZACION # APPROVAL

CUSTOMER APPROVAL DATE:

NAME: TITLE:

COMPANY NAME:

APPROVAL # FREIGABE # DEBLOCAGE # AUTOR/ZACION # APPROVAL

THIS DRAWING MAY NOT BE COPIED OR REPRODUCED IN ANY WAY, AND MAY NOT BE PASSED ON TO A THIRD PARTY WITHOUT WRITTEN PERMISSION.
 OWNERSHIP AND COPYRIGHT OF CONEC GmbH
 DO NOT ALTER CAD DRAWING BY HAND

rev.	description	date	name

tolerance		dim. in mm
2003	date	name
drawn	25.08.	Lehmenkühler
appd.	25.08.	Mickenbecker
norm	DIN 41652	
d-old		

scale: 2:1 (5:1)

material: SEE NOTES

title: **D-SUB MALE**
9-37pos. SOLDER CUP
with threaded insert

dwg no: AutoCAD 2000

part no: 16K1A1005

part no: SEE TABLE

DIN-A 3 sh:1/1

