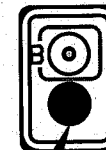
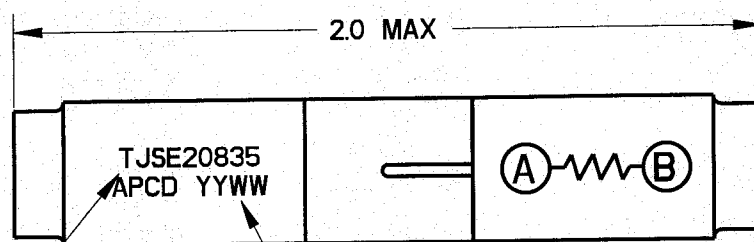
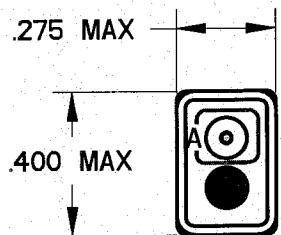


REV	ECN	APP'D
-	6434	<i>DT 10/28/09</i>



WHITE MARKING  
.06 HT

DATE CODE

SEAL HOLE  
BOTH ENDS  
WITH RTV

NOTES:

- MATERIALS:  
HOUSING: POLYETHERIMIDE, COLOR BLACK  
GROMMET: SILICONE ELASTOMER, COLOR BLUE  
INTERNAL CONTACT: COPPER ALLOY, GOLD PLATED,  
PER MIL-DTL-45204, TYPE I, GRADE C, CLASS I.  
CONTACT RETAINER: STAINLESS STEEL
- SPLICE ACCEPTS (2) MATING M39029/1-101 CONTACTS (INCLUDED)
- PART COMPLIES TO ALL REQUIREMENTS PER SAE-AS81714.
- RESISTOR:  $1K\Omega$ ,  $1/4W$ ,  $\pm 1\%$ , RLR07C1001FS

<b>DIMENSIONS</b> ANSI Y14.5M UNITS: INCHES Pro/E FILE	<b>TOLERANCES</b> .XX $\pm 0.01$ .XXX $\pm 0.005$ ANGLES $\pm 2.0^\circ$	<b>PROJECTION</b> 	<b>Amphenol Pcd</b> SPECIFICATION DRAWING		<b>TITLE</b> WIRE SPLICE, ELECTRONIC RESISTOR, $1K\Omega$ , $1/4W$ , $1\%$ SIZE 20		
			DRWN M. DIGIACOMO 08/10/09	ENGR <i>[Signature]</i> 10/28/09	SIZE A	DWG NO. TJSE20835_C	REV -
THIS DOCUMENT CONTAINS PROPRIETARY INFORMATION WHICH IS THE CONFIDENTIAL PROPERTY OF AMPHENOL PCD INC., BEVERLY, MA			APPD <i>[Signature]</i> 10/28/09	CODE: 58982	SCALE: 2:1	SHEET 1 OF 1	