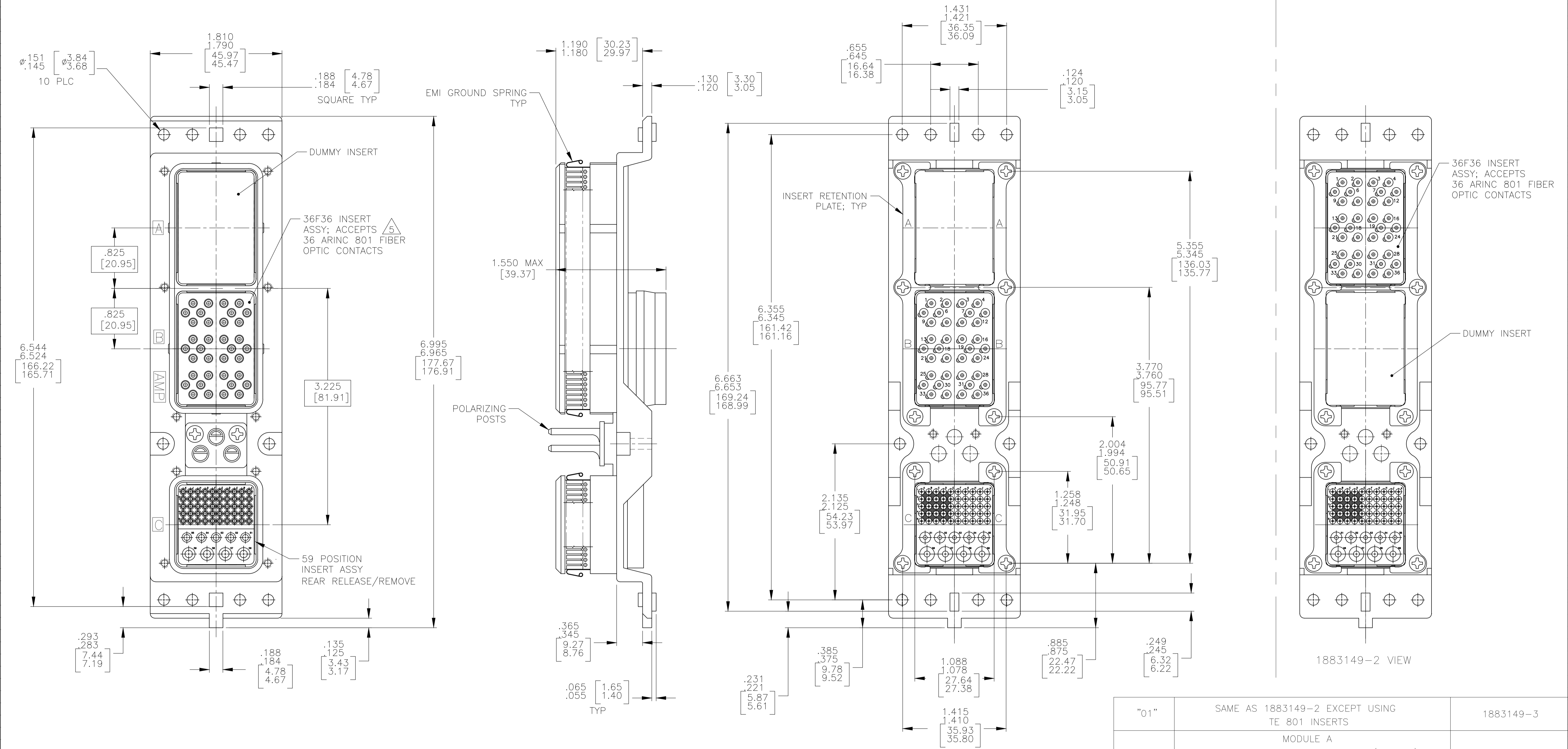


REVISIONS					
P	LTR	DESCRIPTION	DATE	DMN	APVD
H	REVISED PER	ECO-17-015513	19DEC2017	PHM	CT



- CONNECTOR DIMENSIONS ARE PER ARINC 600 SPECIFICATION.
- CONNECTOR IS SUPPLIED WITH CONTACTS (PER TABLE) NOT ASSEMBLED.
- KEYING SHOWN IN POSITION "01" FOR ILLUSTRATION ONLY. CONNECTORS SHIPPED WITH KEYING INSTALLED IN POSITION PER TABLE. FOR POSITION "00" KEYING HARDWARE SHIPPED UNASSEMBLED.
- MODULE B (36F36) IS SUPPLIED WITHOUT CONTACTS. MUST BE ORDERED SEPARATELY.
- DUST COVER IS INSTALLED BUT NOT SHOWN.

COMPONENT	MATERIAL	FINISH
SHELL	DIE CAST ALUMINUM PER ASTM-B-85	ELECTROLESS NICKEL PER MIL-C-26074
INSERT RETENTION PLATES	ALUMINUM ALLOY PER ASTM-B-209	ELECTROLESS NICKEL PER MIL-C-26074
SCREWS	STAINLESS STEEL	PASSIVATED
POLARIZING POST	ZINC ALLOY PER ASTM-B-86	-
POLARIZING POST RETAINING PLATE	ALUMINUM ALLOY PER ASTM-B-209	BLUE ANODIZED PER MIL-A-8625
EMI GROUND SPRING	BERYLLIUM COPPER 172 (ALLOY 29)	ELECTRODEPOSITED NICKEL PER QQ-N-290
36F36 INSERT	THERMOSET OR THERMOPLASTIC PPS PER MIL-M-24519	-
59 POSITION INSERT	THERMOSET OR THERMOPLASTIC PPS PER MIL-M-24519	-
DUMMY INSERT	ALUMINUM ALLOY PER ASTM-B-85	ELECTROLESS NICKEL PER MIL-C-26074

KEYING POSITION	CONTACTS & FILLER PLUGS INCLUDED AND NOT INSTALLED	PART NUMBER
"01"	SAME AS 1883149-2 EXCEPT USING TE 801 INSERTS	1883149-3
"01"	MODULE A 203839-2 SZ 16 FILLER PLUG (QTY=22) MODULE C 208262-3 SZ 22 PIN CONTACT (QTY=35) 208273-2 SZ 12 SOCKET CONTACT (QTY=4) 1663767-5 SZ 22 FILLER PLUG (QTY=15) 1663767-6 SZ 20 FILLER PLUG (QTY=5) PURCHASED INSERTS USED IN THIS ASSEMBLY	1883149-2
"01"	MODULE C 208262-3 SZ 22 PIN CONTACT (QTY=50) 208270-2 SZ 16 SOCKET CONTACT (QTY=5) 208273-2 SZ 12 SOCKET CONTACT (QTY=4)	1883149-1

THIS DRAWING IS A CONTROLLED DOCUMENT. DIMENSIONS: INCHES. TOLERANCES UNLESS OTHERWISE SPECIFIED: 0 PLC ± .0005, 1 PLC ± .0005, 2 PLC ± .0005, 3 PLC ± .0005, 4 PLC ± .0005, ANGLES ± .0005.

DMN: C.C.THOMAS 1-3-07  
CHK: K.HOGAN 1-3-07  
APVD: K.HOGAN 1-3-07

NAME: PLUG ASSY, SIZE 2, ARINC 600  
APPLICATION SPEC: -  
SIZE: A1  
CAGE CODE: 00779  
DRAWING NO: 1883149  
WEIGHT: -  
CUSTOMER DRAWING

SCALE: 1:1 SHEET 1 OF 1 REV H