

Electronic housing - ME 22,5 SF-UT GN - 2708009

Please be informed that the data shown in this PDF Document is generated from our Online Catalog. Please find the complete data in the user's documentation. Our General Terms of Use for Downloads are valid (<http://download.phoenixcontact.com>)

Lower housing parts with vents, extra flat design, fully assembled



Product Features

- Tool-free mounting
- Low design width with a high number of positions
- Large assembly area
- Same PCB geometry for all design widths
- Recessed labeling areas
- Fast mounting on DIN rails according to EN 60715
- Inflammability class V0 according to UL 94
- Cost savings thanks to easy device production
- Material and part identification embossed on the housing (recyclability)
- Electronic components can be partially removed
- Functional earth ground contact (EMC) integrated in the housing base
- Metal foot catch
- Optional BUS connection integrated in the housing, for either parallel or serial contacting



Key commercial data

Packing unit	1 1
Weight per Piece (excluding packing)	20.44 GRM
Custom tariff number	85369010
Country of origin	Germany

Technical data

General

Housing type	Component housing
Housing material	Polyamide

Electronic housing - ME 22,5 SF-UT GN - 2708009

Technical data

General

Color	green
-------	-------

Dimensions

Constructional height	92 mm
Width	22.5 mm

Technical data

Inflammability class according to UL 94	V0
Number of positions	16
	24

Classifications

eCl@ss

eCl@ss 4.0	27180401
eCl@ss 4.1	27180401
eCl@ss 5.0	27180506
eCl@ss 5.1	27180506
eCl@ss 6.0	27180802
eCl@ss 7.0	27182702
eCl@ss 8.0	27182702

ETIM

ETIM 2.0	EC001031
ETIM 3.0	EC001031
ETIM 4.0	EC001031
ETIM 5.0	EC001031

UNSPSC

UNSPSC 6.01	31261501
UNSPSC 7.0901	31261501
UNSPSC 11	31261501
UNSPSC 12.01	31261501
UNSPSC 13.2	31261501

Approvals

Approvals

Electronic housing - ME 22,5 SF-UT GN - 2708009

Approvals

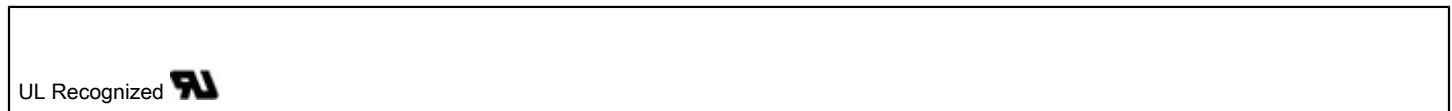
Approvals

UL Recognized

Ex Approvals

Approvals submitted

Approval details



Accessories

Accessories

Coding element

Coding star - CR-MSTB - 1734401



Coding section, inserted into the recess in the header or the inverted plug, red insulating material

Coding profile - CP-MSTB - 1734634



Coding profile, is inserted into the slot on the plug or inverted header, red insulating material

Filler plug

Electronic housing - ME 22,5 SF-UT GN - 2708009

Accessories

Electronic housing - ME B-22,5 MKDSO GN - 2907143



Filler plugs, for unoccupied terminal points

Electronic housing - ME B-22,5 MSTBO GN - 2907156



Filler plugs, for unoccupied terminal points

Electronic housing - ME B-12,5 3MSTBO GN - 2709176



Filler plugs, for unoccupied terminal points

Mounting material

Components of electronic housing - ME-SAS - 2853899



Shield connection clamp for printed circuit terminal block

Electronic housing - ME LPZS - 2906911

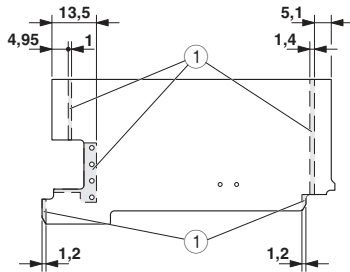


PCB stop, for soldering onto PCB

Electronic housing - ME 22,5 SF-UT GN - 2708009

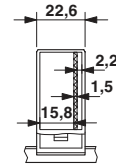
Drawings

Dimensioned drawing



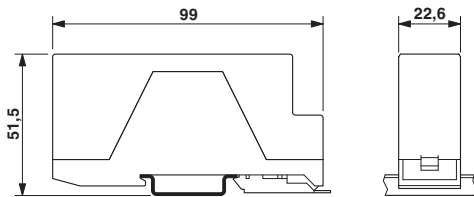
Dimensional drawing of the ME 22,5 superflat... (soldering side) if the single-level upper part is used

Dimensioned drawing



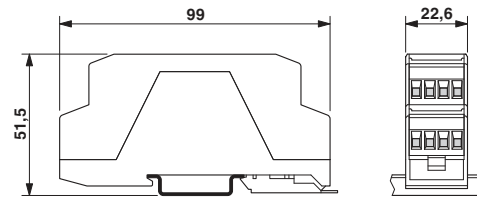
Internal housing dimensions, electronics housing ME 22.5 flat...

Dimensioned drawing



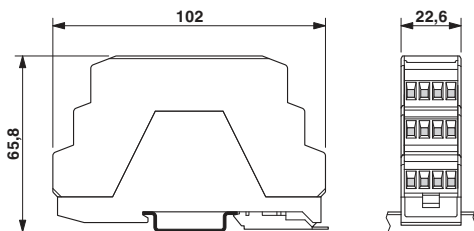
Dimensions of the electronic housing ME 22.5 super-flat... with single-level upper part

Dimensioned drawing



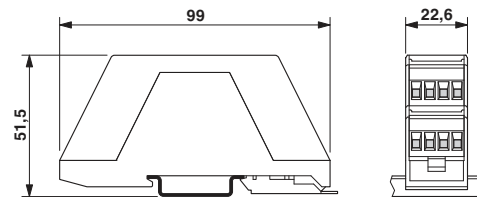
Housing dimensions, electronic housing ME 22.5 super-flat... with double-level upper part

Dimensioned drawing



Housing dimensions, electronic housing ME 22.5 super-flat... with triple-level upper part

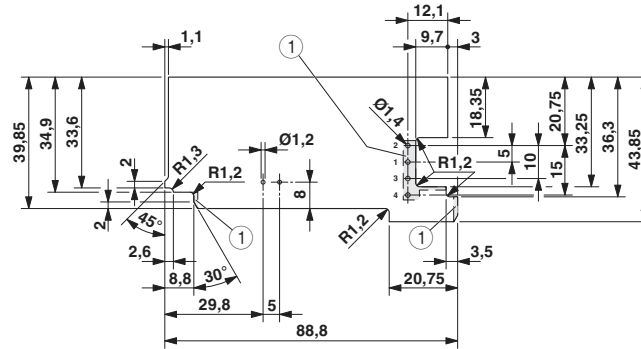
Dimensioned drawing



Housing dimensions, electronic housing ME 22.5 super-flat... with single-level upper part

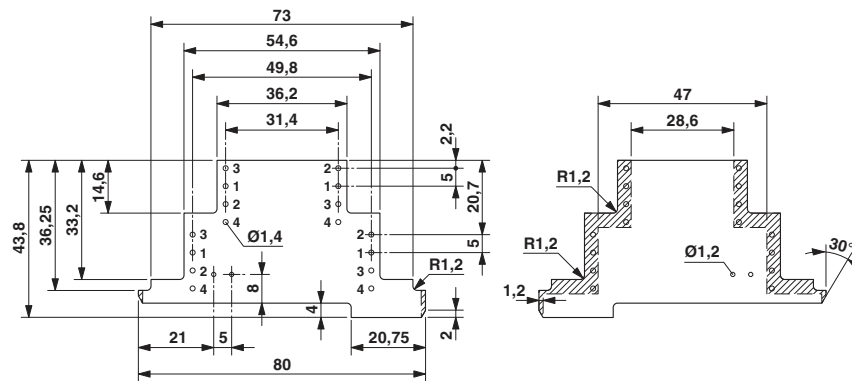
Electronic housing - ME 22,5 SF-UT GN - 2708009

Dimensioned drawing



Dimensional drawing of the ME 22,5 superflat... (component mounting side) if the single-level upper part is used

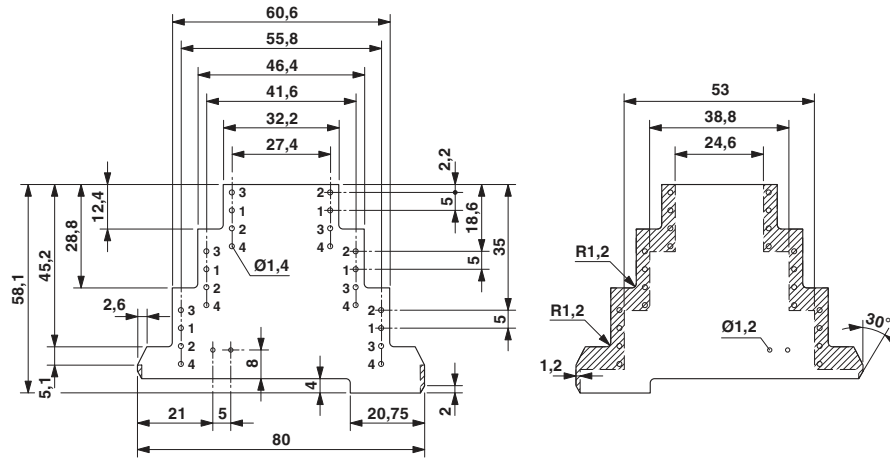
Dimensioned drawing



Dimensional drawing of the ME 22,5 super-flat... printed circuit board if the double level upper part is used

Electronic housing - ME 22,5 SF-UT GN - 2708009

Dimensioned drawing



Dimensional drawing of the ME 22.5 super-flat... PCB when using the three level top part