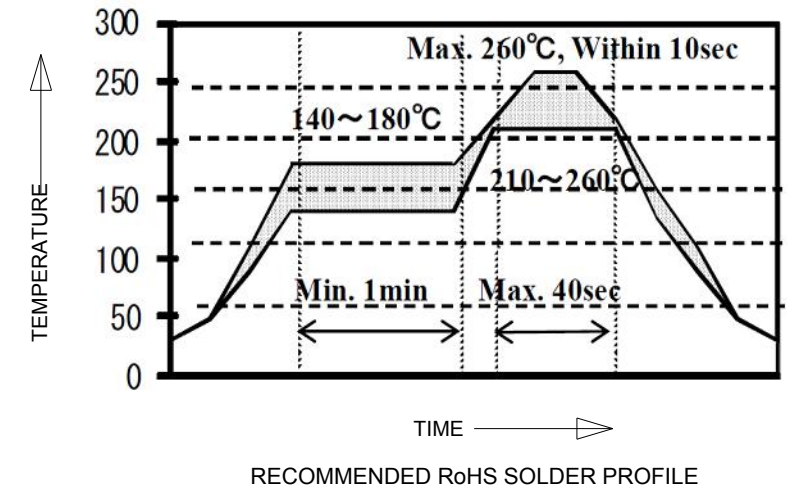
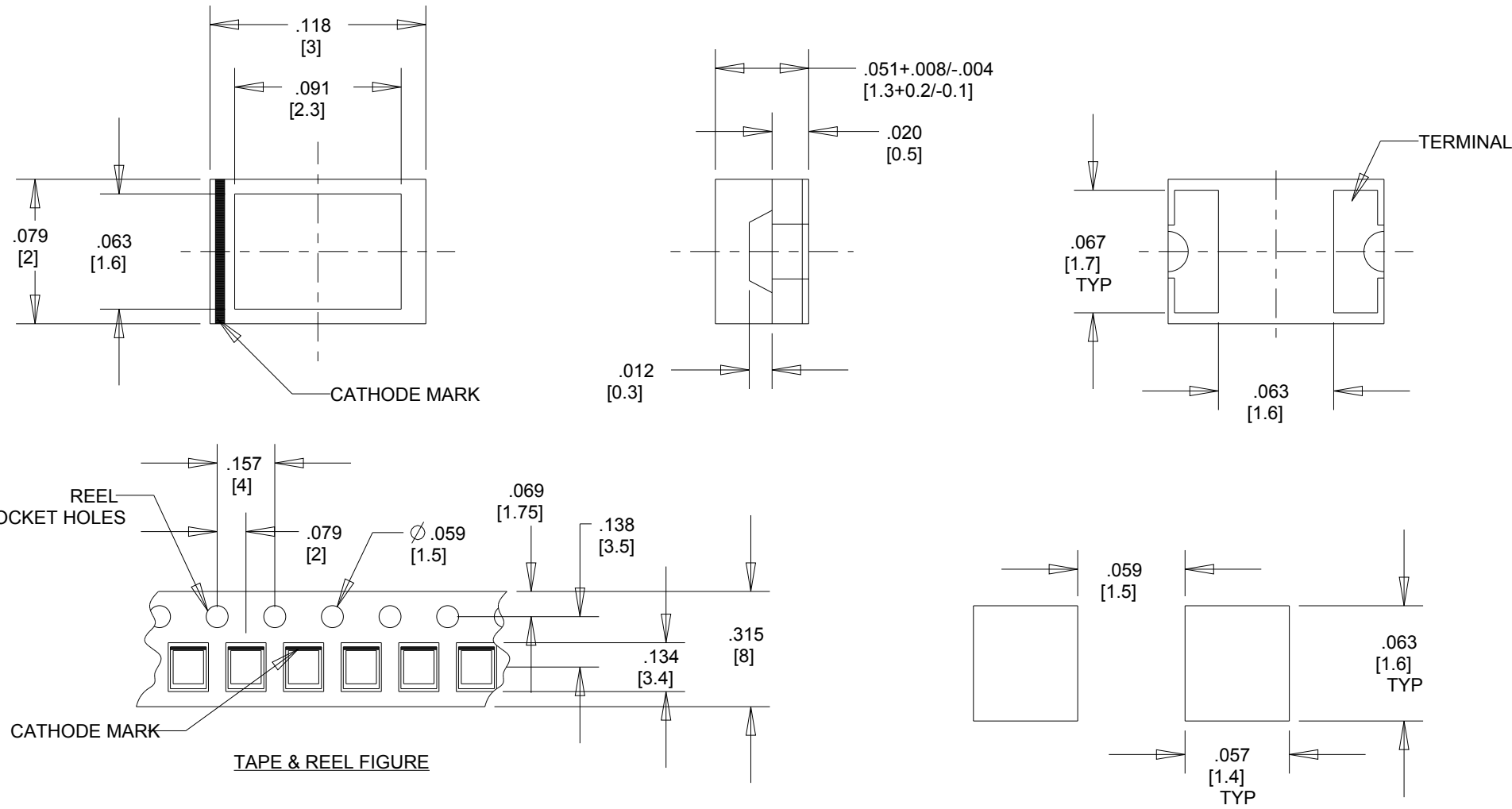


| OPERATING CHARACTERISTICS AT 25° C AMBIENT | | | | | | | | | | | | | |
|--|------------|---------|---------------------|------|--------------------------|------|------|------------------------------|----------------------|--------------------------|------|------|----------------------------------|
| DIALIGHT CATALOG P/N | COLOR | IF (mA) | FORWARD VOLTAGE (V) | | LUMINOUS INTENSITY (mcd) | | | REVERSE LEAKAGE CURRENT (μA) | PEAK WAVELENGTH (nm) | DOMINANT WAVELENGTH (nm) | | | VIEWING ANGLE (2θ 1/2) (DEGREES) |
| | | | TYP. | MAX. | MIN. | TYP. | MAX. | MAX. | | MIN. | TYP. | MAX. | |
| 597-3021-507F, -502F | RED | 20 | 2.0 | 2.8 | 2.2 | 6.3 | 10.4 | 100 | 650 | 646 | 653 | 659 | 110 |
| 597-3111-507F, -502F | BRIGHT RED | 20 | 1.75 | 2.5 | 5.6 | 16.0 | 26.4 | 100 | 660 | 656 | 662 | 668 | 110 |
| 597-3211-507F, -502F | ORANGE | 20 | 2.0 | 2.8 | 3.6 | 10.0 | 16.4 | 100 | 610 | 604 | 612 | 618 | 110 |
| 597-3301-507F, -502F | GREEN | 20 | 2.2 | 2.8 | 5.6 | 25.0 | 44.4 | 100 | 570 | 565 | 573 | 581 | 110 |
| 597-3401-507F, -502F | YELLOW | 20 | 2.1 | 2.8 | 2.2 | 6.3 | 10.4 | 100 | 585 | 580 | 588 | 596 | 110 |

| REV | ECN NO | REVISIONS | DRN | CKD | APP | DATE |
|-----|--------|------------------------|-----|-----|-----|--------|
| A | --- | NEW RELEASE | TWC | --- | --- | --- |
| B | --- | REVISED REFLOW PROFILE | AJF | KLJ | NO | 2-8-11 |



NOTES:

1. EPOXY COLOR: WATER CLEAR.
2. LEAD FINISH: GOLD (Au) PLATED OVER NICKEL (Ni).
3. TAPE AND REEL LEDS MAY REQUIRE RE-TAPING AFTER TWELVE MONTHS.
4. DIALIGHT PART NUMBER: 597-3XX1-507F FOR A 2500 PC. REEL AND 597-3XX1-502F FOR A 20 PC. SAMPLE STRIP

RoHS Compliant 597-3XX1-50XF Surface Mount CBI

Part Numbers with the "F" suffix ending are RoHS Compliant.
 Example: 597-3301-507F
 Reel and bag packaging are marked with "RoHS Compliant" label or equivalent markings. These parts can be used with RoHS reflow profile.
 Parts can be wave soldered, dip soldered or hand soldered using typical lead-free soldering process with max 260°C temp. for 5 sec.

SOLDER PAD LAYOUT

| ABSOLUTE MAXIMUM RATING AT 25°C AMBIENT | 597-3XX1-507F AND 597-3XX1-502F | | | | | UNITS | |
|---|---------------------------------|------|------|------|------|------------|----|
| | 3021 | 3111 | 3211 | 3301 | 3401 | | |
| POWER DISSIPATION | 70 | 75 | | 70 | | mW | |
| CONTINUOUS FORWARD CURRENT | 25 | 30 | | 25 | | mA | |
| PEAK FORWARD CURRENT (PULSE WIDTH 1 ms, DUTY 20%) | 60 | 75 | | 60 | | mA | |
| OPERATING TEMPERATURE | | | | | | -30 TO +85 | °C |
| STORAGE TEMPERATURE | | | | | | -40 TO +85 | °C |

THIS DRAWING AND THE CONTENTS HEREIN ARE CONFIDENTIAL AND THE SOLE PROPERTY OF DIALIGHT CORP. REPRODUCTION OF THIS DRAWING OR CONSTRUCTION OF ANY PARTS WITHIN THIS DRAWING ARE FORBIDDEN WITHOUT THE WRITTEN CONSENT OF DIALIGHT CORP.

| | | |
|--|--|-----|
| SCALE: DRAWING SCALE | DRAWING NUMBER | REV |
| ALL DIM's: INCH (mm) | C-17290 | B |
| TOLERANCES: UNLESS OTHERWISE SPECIFIED | TITLE SINGLE COLOR SMT LED 1208 PKG RoHS COMPLIANT | |
| FRACTIONS: ±1/64 | MATERIAL | |
| DECIMALS (.XX): ±.01 | FINISH | |
| DECIMALS (.XXX): ±.005 | FSCM 83330 | |
| DECIMALS (.XXXX): ±.0005 | SHEET 1 OF 1 | |
| ANGLES: ±1° | FAMILY TABLE: | |

Dialight 1501 ROUTE 34 SOUTH FARMINGDALE, NJ 07727 (732) 919-3119 www.dialight.com