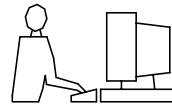
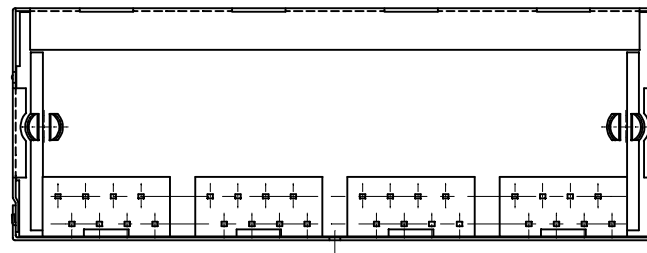
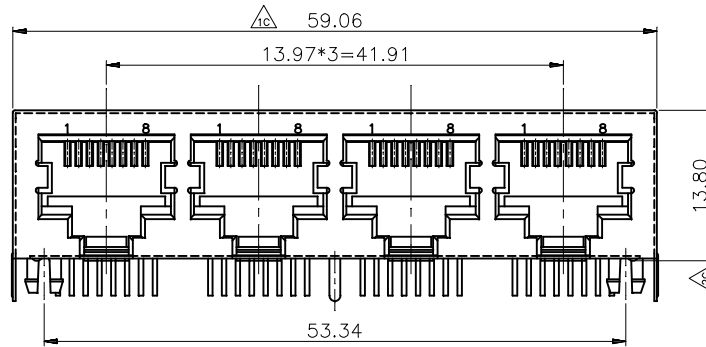


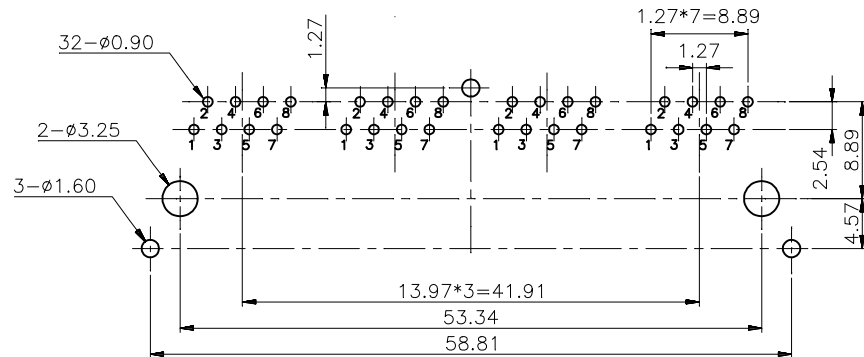
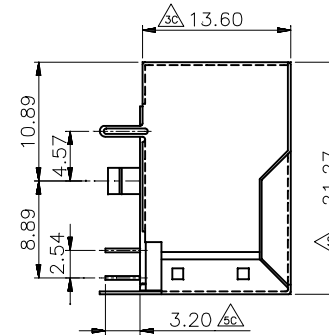
THIS IS A C.A.D. GENERATED DRAWING
DO NOT MAKE MANUAL REVISIONS TO MASTER.



* UNLESS OTHERWISE SPECIFIED TOLERANCES
ON DECIMAL IS: ANGLE ± 3°
UNIT: MM X. ±0.50
X.X ±0.38
X.XX ±0.25
X.XXX ±0.10



PCB LAYOUT/TOP VIEW



1. MATERIALS:
 - 1.1 PLASTIC HOUSING: ENGINEERING THERMOPLASTIC
FLAMMABILITY RATING UL 94V-0
 - 1.2 CONTACTS: PHOSPHOR BRONZE
 - 1.3 PLATING: GOLD PLATING 6u" OVER NICKEL IN CONTACT
TIN PLATING OVER NICKEL IN SOLDER AREA
 - 1.4 SHIELDED: BRASS WITH NICKEL PLATED

Ordering information

Type/Size	P/N-BULK	Product Code
4port-Shielded	2101-0112-02	MH3012-S-04

THESE DRAWINGS AND SPECIFICATIONS ARE THE PROPERTY OF MH CONNECTORS LTD. AND SHALL NOT BE REPRODUCED, COPIED OR USED AS THE BASIS FOR THE MANUFACTURE OR SALE OF APPARATUS WITHOUT WRITTEN PERMISSION.

DRAWN Haley	DATE 01-12-15
APPROVED	DATE



THIS SERIES FULLY CONFORMS TO THE EUROPEAN UNION DIRECTIVES 2002/95/EC AND 2002/96/EC FOR RoHS COMPLIANCY.



MH CONNECTORS LTD.

SCALE 1:1	SHEET OF 1 OF 1	REV: 2.0
--------------	--------------------	-------------

DRAWING No
MH3012-S-04