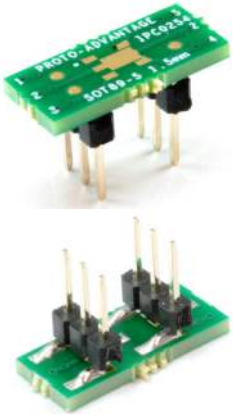
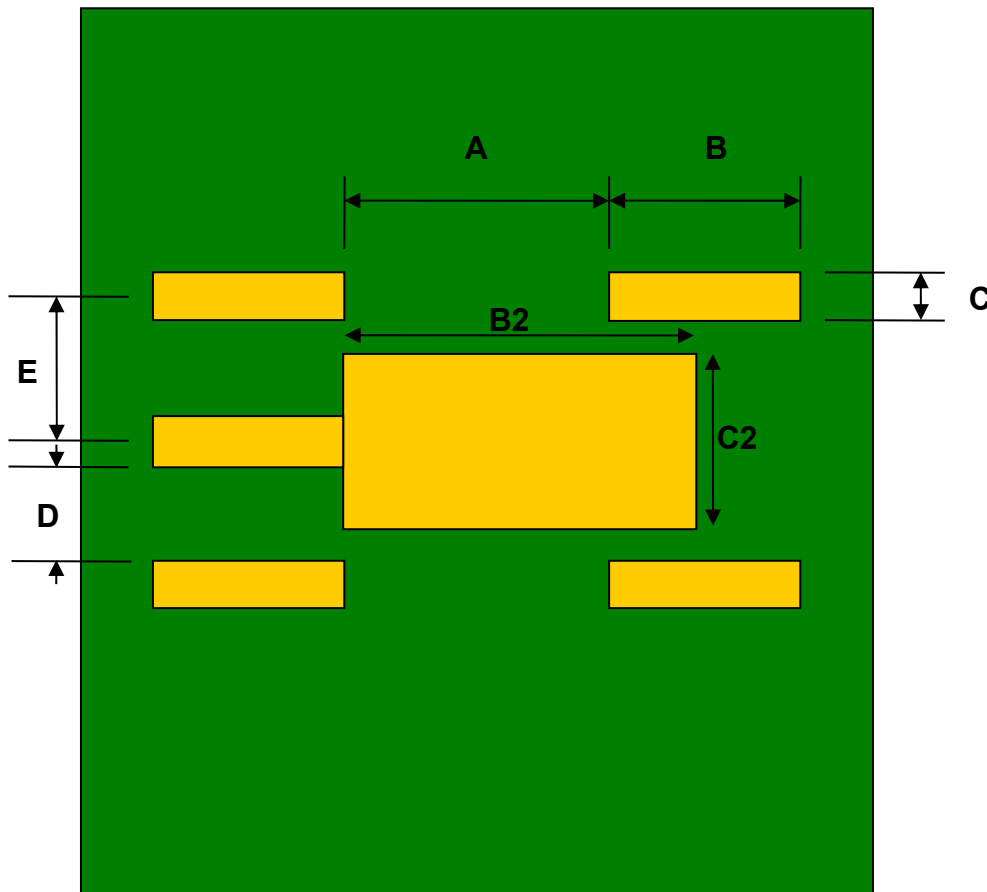


## SOT89-5 to DIP-6 SMT Adapter (1.5 mm pitch, 4.6 x 2.6 mm body)



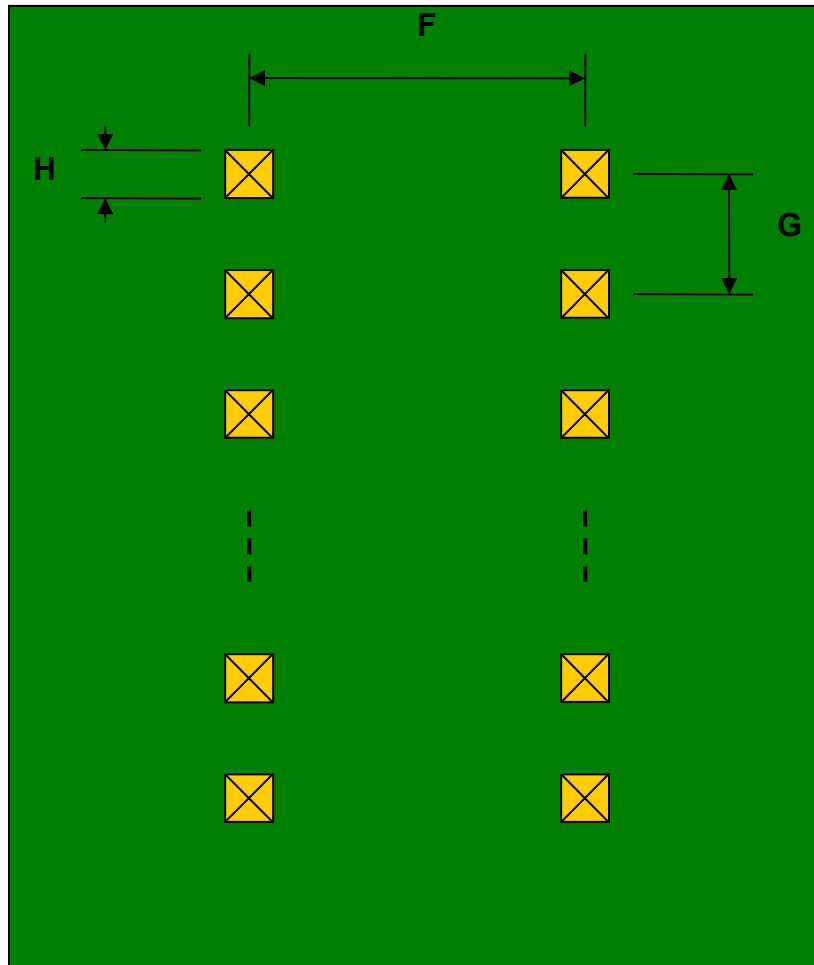
REF.	DIMENSIONS					
	mm			inches		
	MIN.	TYP.	MAX.	MIN.	TYP.	MAX.
A		2.10				
B		1.20				
C		0.68				
B2		3.05				
C2		1.90				
D		0.82				
E		1.50				
F					0.300	
G					0.100	
H					0.025	

Top View (SMT Footprint)



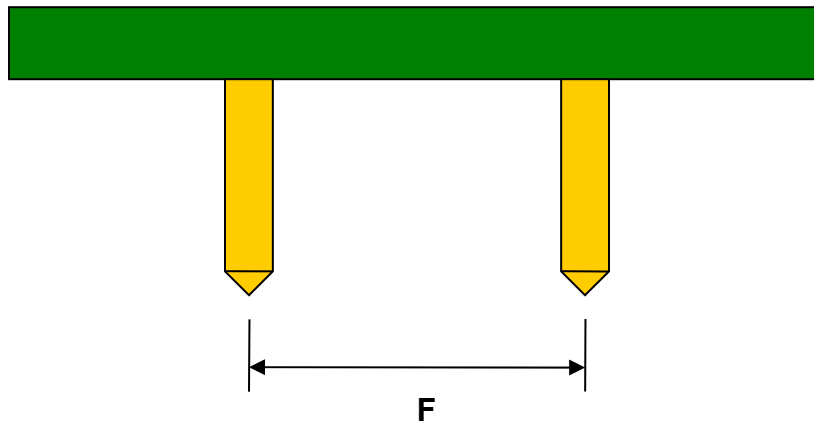
(Representative drawing only - not to scale)

### Bottom View (DIP Pins)



(Representative drawing only - not to scale)

### Side View (DIP Pins)



(Representative drawing only - not to scale)