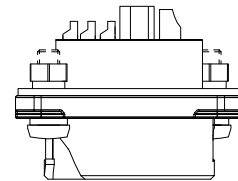
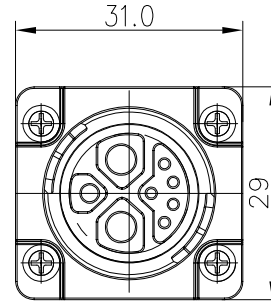
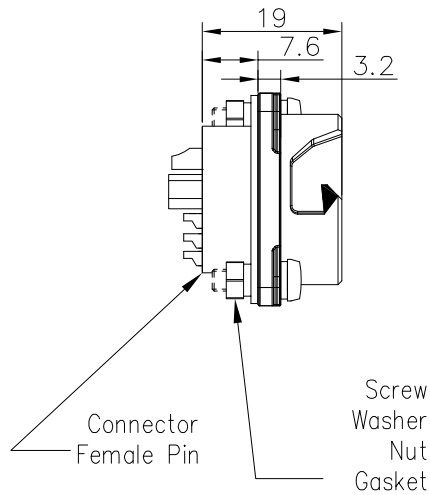
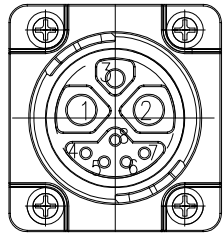


| REV. | ECN NO. | DESCRIPTION | SIGN | DATE |
|------|---------|-----------------|------|------------|
| C1 | N/A | INITIAL DRAWING | Liu | 2019/08/08 |

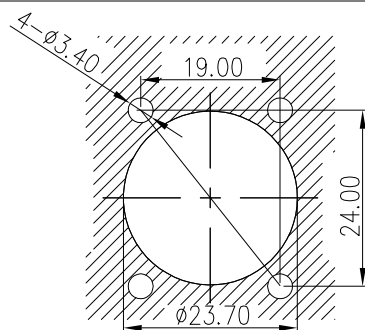


Specification:

- 1.Operation Temperature: $-45^{\circ}\text{C}\sim 105^{\circ}\text{C}$.
- 2.Insulation Resistance: $100\text{M}\Omega$ at DC500V.
- 3.Contact Resistance: $<10\text{m}\Omega$.
- 4.Withstand Voltage: 1500V AC, 1min
- 5.Operating Current: 50A+15A+5A
- 6.Operating Voltage: AC 250V
- 7.Waterproof Rate: IP67 (Mated)
- 8.Housing: Nylon, Black
- 9.Female Pin: Copper Alloy, Gold Plated
- 10.Gasket: Silicon Black
- 11.Screw: Stainless Steel
- 12.Washe: Stainless Steel
- 13.Nut: Stainless Steel
- 14.RoHS Compliant.
- 15.Mating Cap P/N: 806-00058-00



2+1+5 Pos



RECOMMENDED PANEL CUT-OUT
Panel Thickness MAX 5mm

Pin Assignments
Front View

| | |
|-----------|-----------------|
| UNIT:mm | |
| TOLERANCE | |
| .X | ± 0.25 |
| .XX | ± 0.15 |
| .XXX | ± 0.05 |
| ANGLES | $\pm 1^{\circ}$ |

| | | | |
|--|-----|-------|--------|
| DESCRIPTION Large Series 2+1+5 Pos Push Lock Rear Mount With Female Pin | | | |
| SCALE: | N/A | SHEET | 1 OF 1 |
| REV. | C1 | SIZE | A4 |
| * : Inspection Item | | | |

PART NO 24305636-04

DWG NO

CUSTOMER

CHOGORI

| | | | |
|-------------|-----|------|------------|
| DRAWN BY | Liu | DATE | 2019/08/08 |
| CHECKED BY | Mo | DATE | 2019/08/08 |
| APPROVED BY | | DATE | |

THIS INFORMATION IS CONFIDENTIAL AND IS DISCLOSED TO YOU ON CONDITION THAT NO FURTHER DISCLOSURE IS MADE BY YOU TO OTHER THAN CHOGORI PERSONNEL WITHOUT AUTHORIZATION FROM CHOGORI CORP.