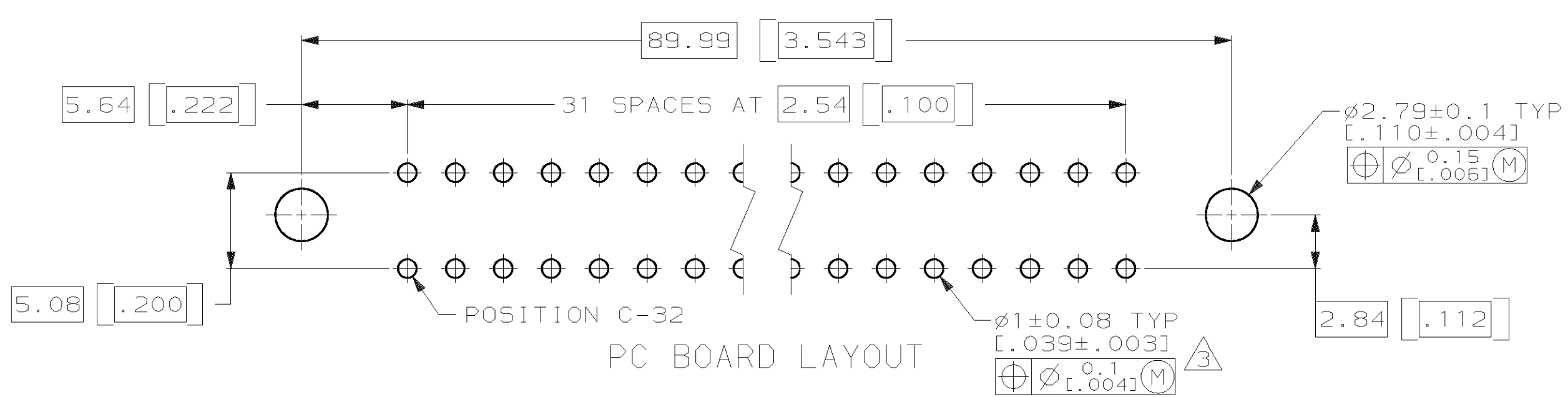
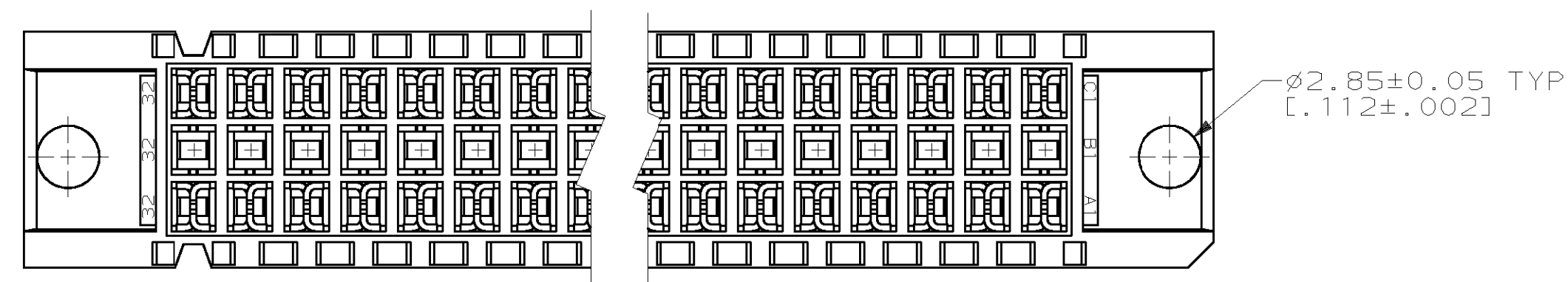
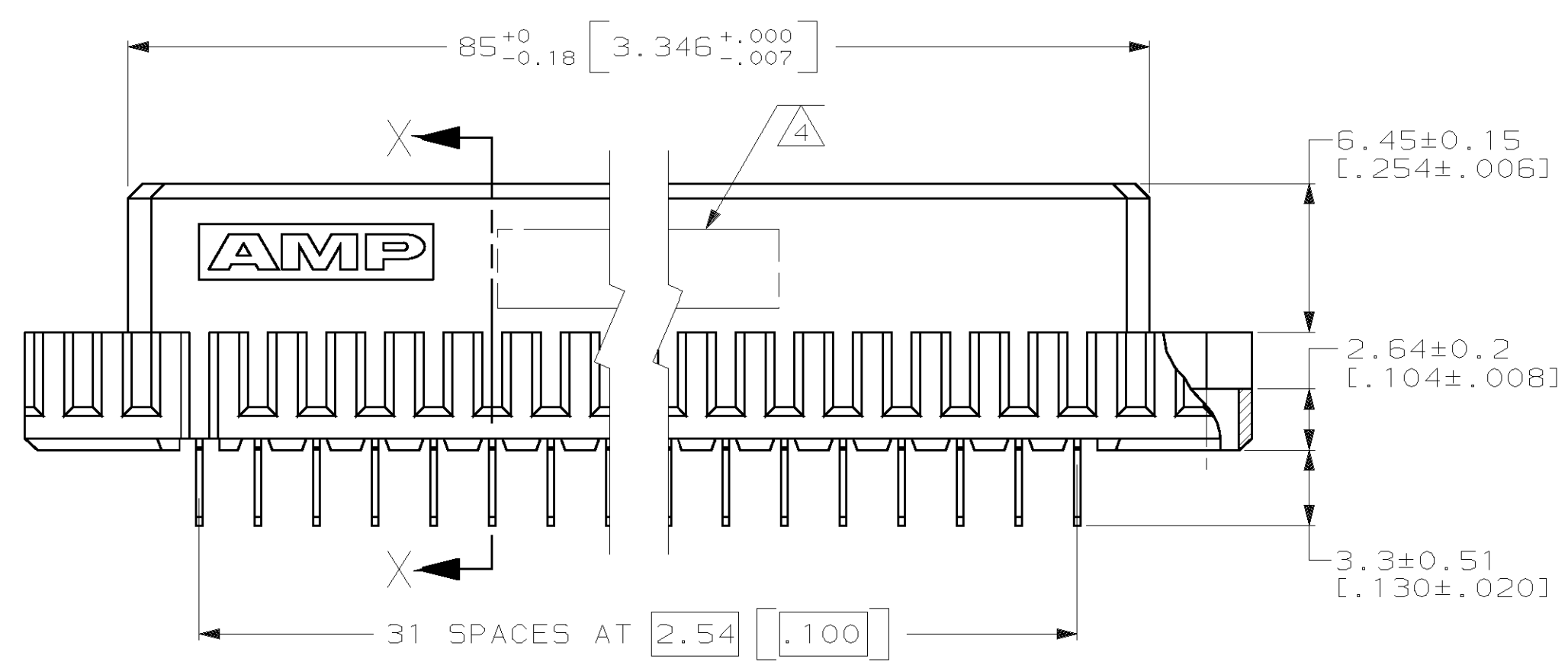
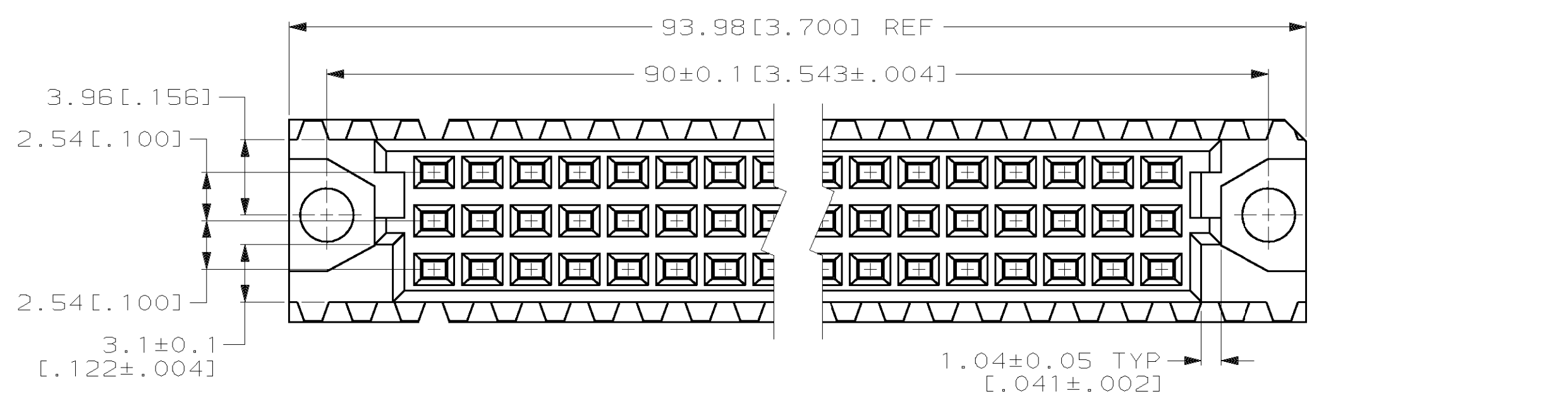
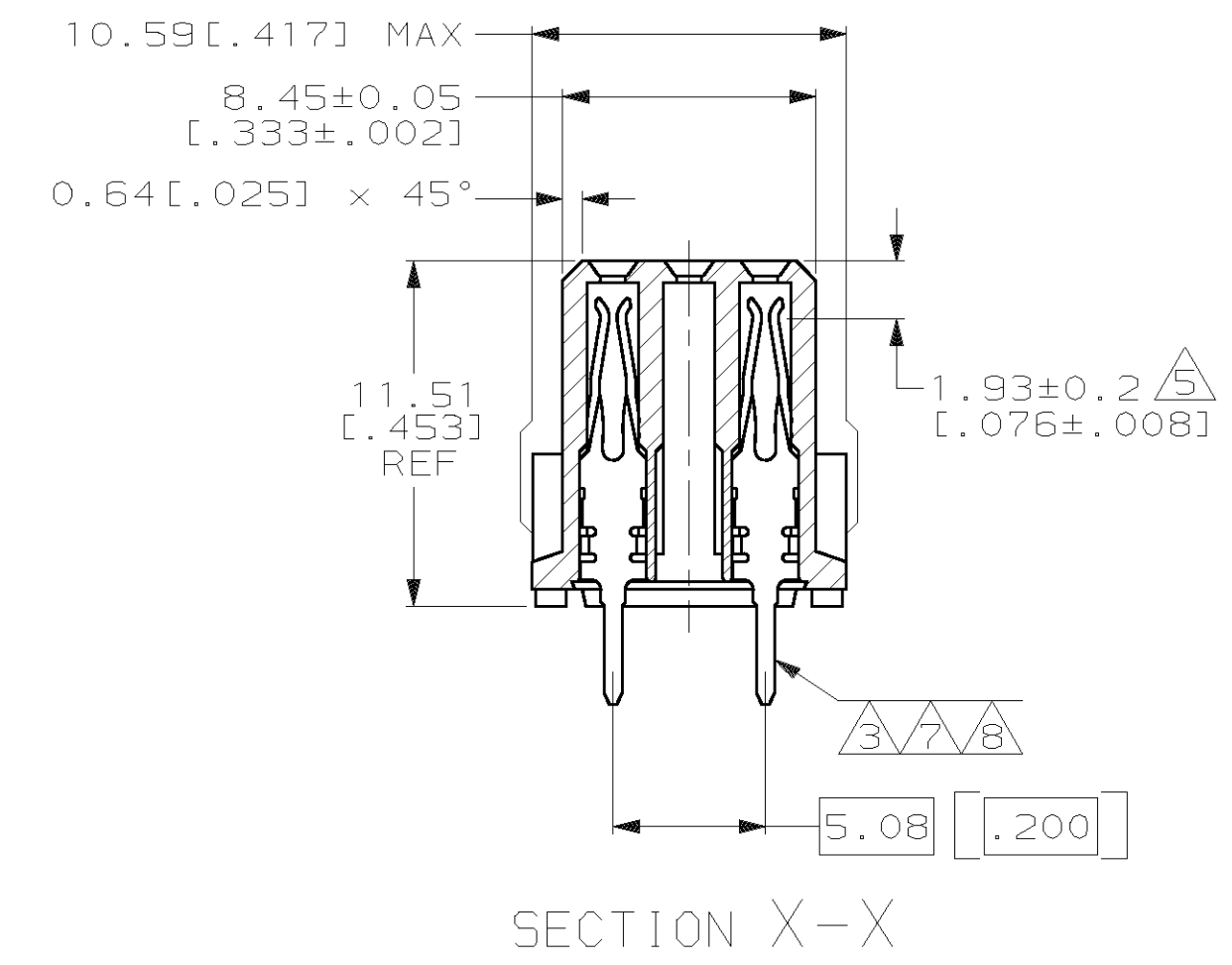


LOC		DIST		REV		REVISIONS		DATE	APPD
AD	25	P	F	ZONE	LTR	DESCRIPTION			
				E	EC	0010-1488-95		4/1/96	CR
				F	REV PER EC	001B-0367-00		09 JAN 01	CR



- ① HOUSING MATERIAL: GLASS-FILLED POLYESTER. COLOR: GRAY.
- ② CONTACT MATERIAL: PHOSPHOR BRONZE.
- ③ CONTACT FINISH: 0.00076 [0.00030] GOLD IN CONTACT AREA. 0.00127 [0.00050] NICKEL UNDERPLATE ALL OVER. TIN-LEAD PLATE ON POSTS.
- ④ PART NUMBER, DATE CODE IDENTIFICATION, CSA LOGO IN THIS APPROXIMATE AREA, ON REVERSE SIDE.
- ⑤ CONTACT POINT.
- ⑥ RECOMMENDED HOLE SIZE FOR MANUAL APPLICATION OF CONNECTOR ONTO PC BOARD.
- ⑦ CONTACT FINISH: DIN 41612 CLASS 3 IN CONTACT AREA. TIN-LEAD PLATE ON POSTS.
- ⑧ CONTACT FINISH: DIN 41612 CLASS 2 IN CONTACT AREA. TIN-LEAD PLATE ON POSTS.



		POSITIONS LOADED	ROWS	NO. OF LOADED POSITIONS	PART NUMBER
OBSOLETE	⑦	1-32	C	32	650956-9
		NONE	B	0	
	⑧	1-32	A	32	650956-5
		NONE	B	0	
SUPERSEDED BY 650956-5	③	1-32	A	32	650956-4
		NONE	B	0	

DO NOT SCALE PRINT. UNLESS SPECIFIED DIMENSIONS IN mm [INCHES] TOLERANCES ON: 1 PLC DEC ± - 2 PLC DEC ± 0.13 [.005] ANGLES ± -		DR L. BRINER 1/23/91		AMP INCORPORATED Harrisburg, Pa. 17105	
HOUSING: ①		CHK N. DRASHER 12/31/91			
CONTACT: ②		APPD N. DRASHER 12/31/91		NAME	
FINISH		APPD K.R. PARMER 12/31/91		EUROCARD, RECEPTACLE ASSEMBLY, TYP C	
CONTACT: ③ ⑦ ⑧		PRODUCT SPEC -		DRAWING NO 650956	
APPLICATION SPEC -		SIZE D	FSCM NO 00779	SHEET 1 OF 1	
WEIGHT -		SCALE 4:1			