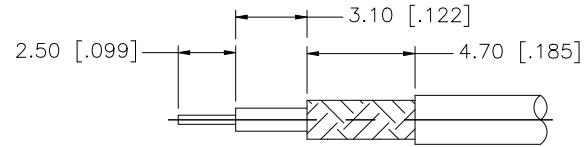
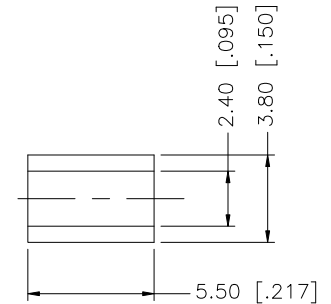
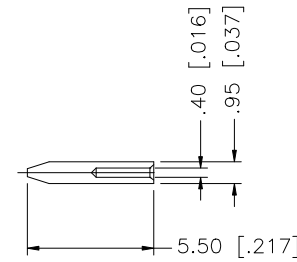
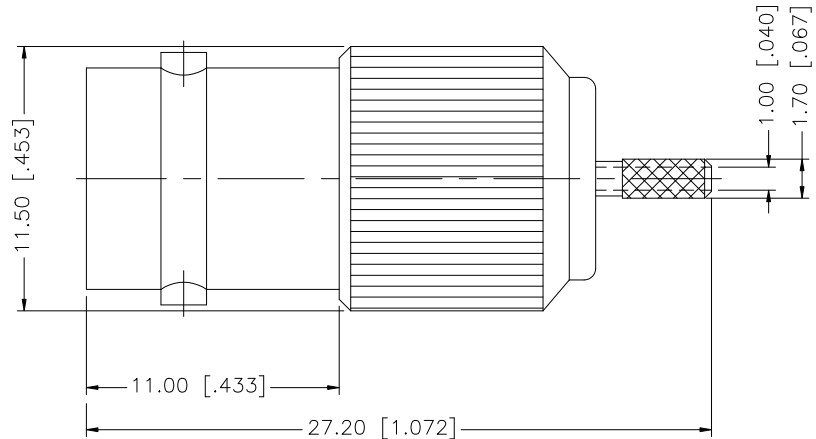


REV.	DATE	DESCRIPTION
NC	06/02/99	INITIAL RELEASE
A	10/03/07	UPDATE DRAWING FORMAT



RECOMMENDED CABLE STRIPPING DIM'S



NOTE:

1. CRIMPED FERRULE HEX CRIMP SIZE .128"
2. CRIMPED CONTACT PIN - 4-WAY CRIMP OR SOLDER.

				UNLESS OTHERWISE SPECIFIED DIMENSIONS ARE IN MILLIMETERS. DIMENSIONS IN [] ARE IN INCHES AND FOR CUSTOMER REFERENCE ONLY.	APPROVALS	DATE	Amphenol Connex			
8				UNLESS OTHERWISE SPECIFIED TOLERANCES FOR MILLIMETERS ARE: 0.5 - 8mm ± 0.20mm 8 - 30mm ± 0.40mm 30 - 120mm ± 0.50mm UNLESS OTHERWISE SPECIFIED TOLERANCES FOR INCHES ARE: .020 - .315 = ± 0.007" .315 - 1.180 = ± 0.015" 1.180 - 4.724 = ± 0.020"	DRAWN G.R.S.	10/03/07				
7					CHECKED					
6					ISSUED					
5					SHEET 1 OF 1					
4	FERRULE	COPPER	NICKEL	1	PART NO. 112631					
3	CONTACT PIN	PHOS. BRONZE	GOLD	1						
2	INSULATOR	TEFLON	NATURAL	1	DWG. NO. 112631.DWG					
1	BODY	BRASS	NICKEL	1						
DESCRIPTION MATERIAL FINISH QTY				DO NOT SCALE DRAWING	CAD FILE C:/112/112631.DWG		REV. A	SIZE A	SCALE NA	