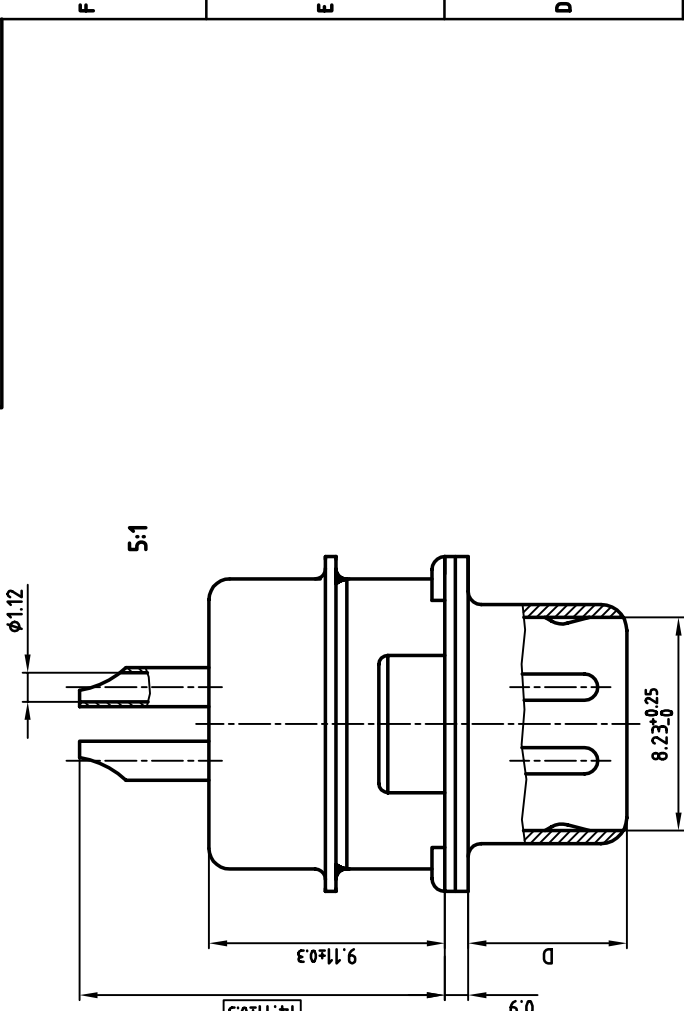


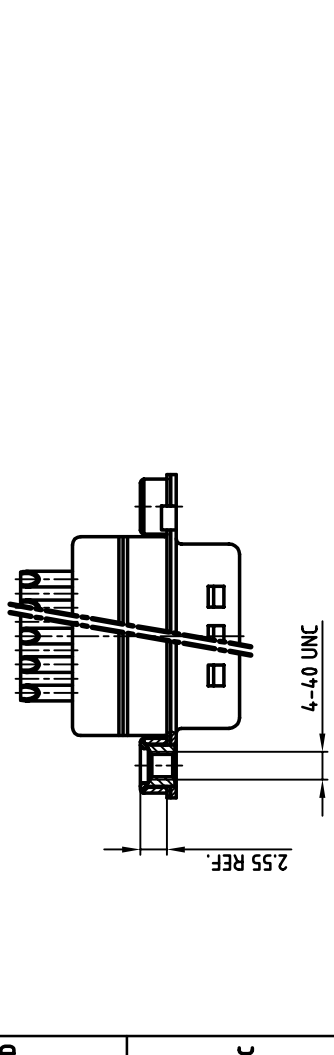
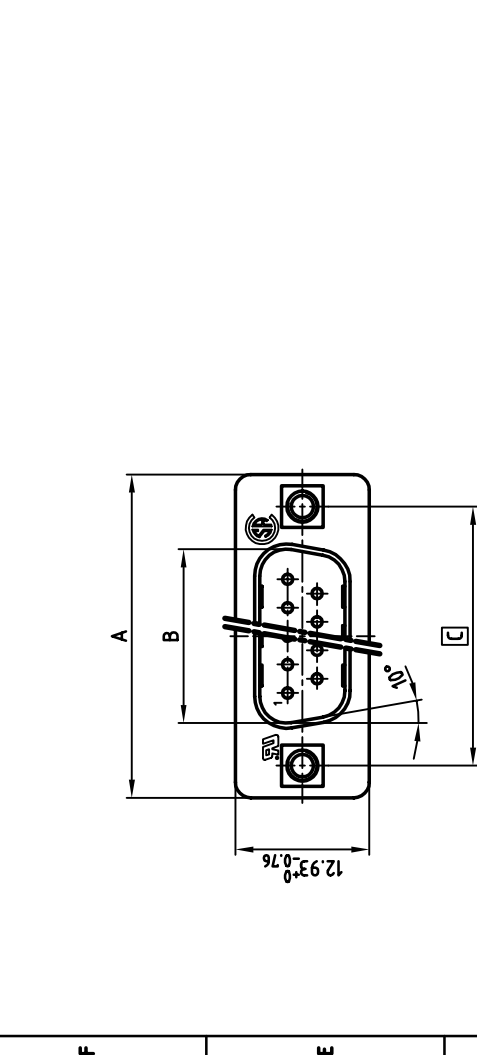
1 used for: D-SUB T FILTER



**NOTES:**

1. METALSHELLS: STEEL, min. 320µ" TIN
2. INSULATORS: PBT GF UL 94 V-0, BLACK
3. CONTACTS: COPPER ALLOY
4. PLATING: min. 8µ" HARD GOLD OVER min. 50µ" NICKEL  
SOLDER CUP ACCEPTS CABLE AWG 20
5. THREADED INSERT: COPPER ALLOY; min. 200µ" TIN over 80µ" NICKEL
6. COLLAR: COPPER ALLOY; min. 200µ" TIN over 80µ" NICKEL
7. CAPACITANCE: 2 x 1300pF ±20%
8. DIELECTRIC WITHSTANDING VOLTAGE: 424 VDC
9. MAXIMUM TORQUE VALUE FOR THREAD: 6" LBS
10.   = CRITICAL DIMENSION: SPC

CONEC CORPORATION BRAMPTON, ONTARIO		tolerance		scale:	2:1 (5:1)
DO NOT ALTER CAD DRAWING BY HAND OWNERSHIP AND COPYRIGHT OF CONEC GMBH WRITTEN PERMISSION BE PASSED ON TO A THIRD PARTY WITHOUT REPRODUCTION IN ANY WAY, AND MAY NOT		material:		material:	SEE NOTES
2001	date	name	title:	D-SUB T FILTER MALE	
drawn	29.03.	Pareil	SOLDER CUP 9-37pos. with threaded insert		
appd.	29.03.	E. Mickenbecker	AutoCAD 2000		
norm	DIN 41522		DIN-A		
6-01d.			3		
rev. description		date	sh: 1/1		
			part no: SEE TABLE		



No. of pos.	A <sup>-0.76</sup>	B <sup>+0.25</sup>	C	D <sup>-0.3</sup>	Part No.
9	31.19	16.79	25.00 <sup>+0.12</sup> <sub>-0.13</sub>	6.12	241A29360X
15	39.52	25.12	33.30 <sup>+0.15</sup> <sub>-0.1</sub>	6.12	241A29370X
25	53.42	38.84	47.04 <sup>+0.13</sup>	5.99	241A29380X
37	69.70	55.30	63.50 <sup>+0.13</sup>	5.99	241A29390X

1 2 3 4 5 6 7 8