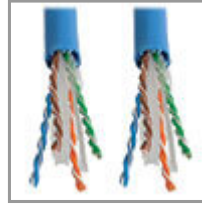


Cat6 Gigabit Solid Core Plenum-Rated UTP CMP PVC Bulk Ethernet Cable, Blue, 1000 ft. (304.8 m)

MODEL NUMBER: N224-01K-BL



Premium high-speed cabling designed for Cat6 premise (in-wall) applications in air ducts and drop ceilings, such as the distribution of data, voice and digital video across Gigabit Ethernet networks.

Features

Perfect Solution for High-Speed Cat6 Premise Applications in Air Ducts and Drop Ceilings

- Designed for distributing data, voice and digital video across Gigabit Ethernet networks
- Delivers speeds up to 550 MHz/1 Gbps
- Ideal for horizontal wiring applications, including 10/100/1000 Base-T Ethernet, 100 Mbps TPDDI, 155 Mbps ATM, ISDN, voice, EIA/TIA and Token Ring Type 3 applications

Premium Construction for Superior Performance

- Made from 23 AWG copper wire
- 4-pair solid UTP
- Minimum near-end crosstalk
- Plenum-rated CMP jacket
- Meets most current industry standards, including IEEE 802.3ab, IEEE 802.5, ANSI/EIA/TIA 568, ISO/IEC 11801 and ETL (category 6, draft 11)

Specifications

OVERVIEW	
UPC Code	037332168009
Technology	Cat6
PHYSICAL	
Cable Jacket Color	Blue

Highlights

- Ideal for horizontal applications in air ducts and drop ceilings
- Rated for 550 MHz/1 Gbps communications
- High-quality 23 AWG 4-pair solid copper wire
- Plenum-rated CMP jacket
- Meets IEEE 802.3ab and ANSI/EIA/TIA 568 standards

Package Includes

- N224-01K-BL Cat6 Gigabit Bulk Solid-Core Plenum-Rated CMP Cable, Blue, 1000 ft.

Cable Jacket Material	PVC
Cable Jacket Rating	CMP
Cable Shielding	UTP
Cable Outer Diameter (OD)	6.0 mm
Number of Conductors	4 Pair
Conductor Material	Solid Copper
Conductor Gauge	23 AWG
Cable Length (ft.)	1000
Cable Length (m)	304.88
Cable Length (in.)	12000
Cable Length (cm)	30480
Shipping Dimensions (hwd / in.)	13.78 x 14.17 x 13.78
Shipping Dimensions (hwd / cm)	35.00 x 35.99 x 35.00
Shipping Weight (lbs.)	31.00
Shipping Weight (kg)	14.06
ENVIRONMENTAL	
Operating Temperature Range	-4° to 167°F (-20° to 75°C)
Storage Temperature Range	32° to 140°F (0° to 60°C)
COMMUNICATIONS	
Bandwidth per TIA Standard	250 MHz
Maximum Bandwidth as Tested	500 MHz
Network Compatibility	1 Gbps (Gigabit)
IEEE Standards Supported	802.3ab
CONNECTIONS	
Side A - Connector 1	BARE WIRE
Side B - Connector 1	BARE WIRE
Crossover Wiring	No
Connector Type	Bare Wire
Angled Connector	No
FEATURES & SPECIFICATIONS	
Antibacterial	No
IP68 Rated	No
Snagless Connector	No

STANDARDS & COMPLIANCE	
Product Compliance	RoHS; IEEE 802.3ab 1000Base-T; REACH; Trade Agreements Act (TAA)
WARRANTY & SUPPORT	
Product Warranty Period (Worldwide)	Lifetime limited warranty