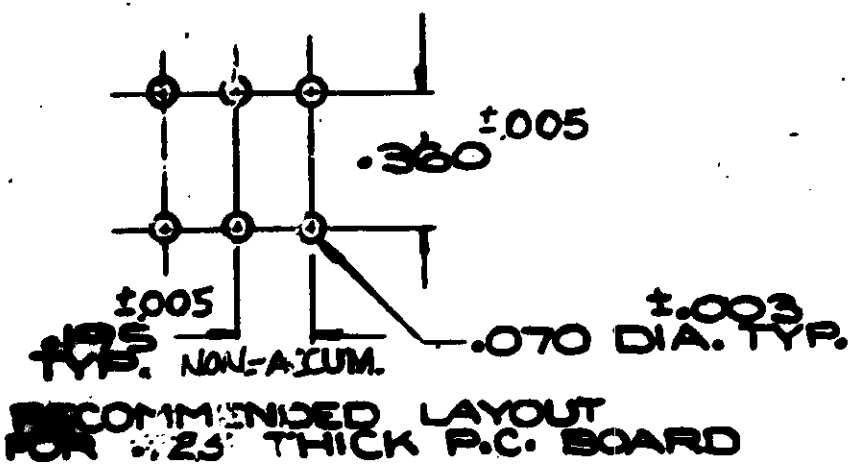
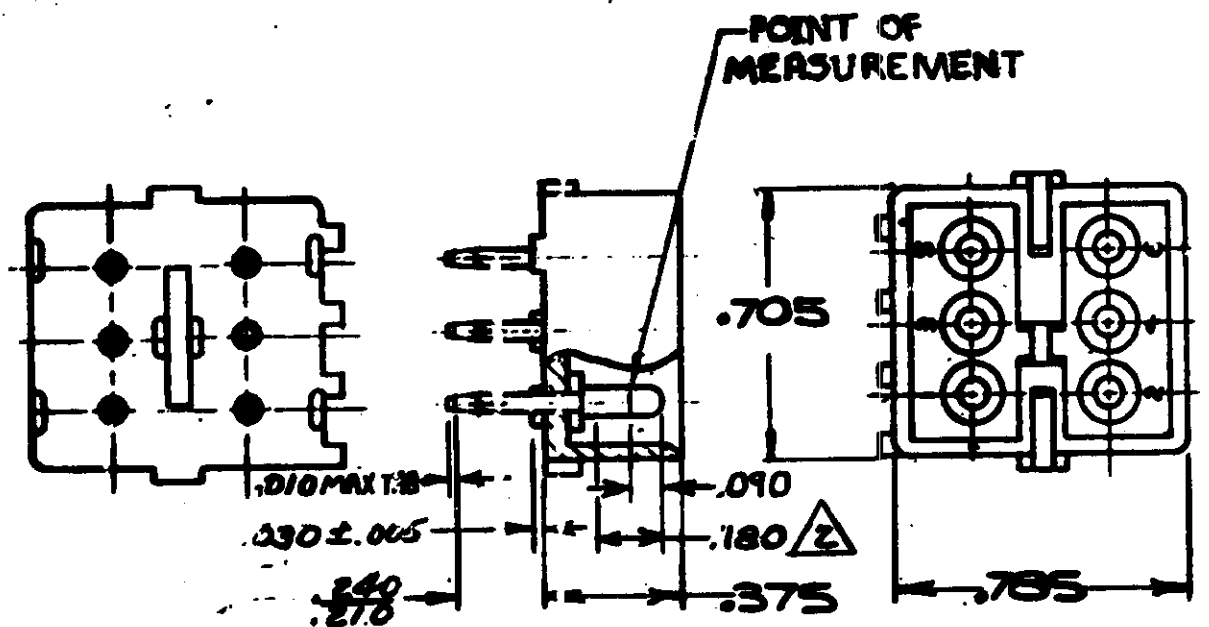


S



- 1. PARTS COMPLY WITH AMP SOLDERABILITY SPEC. NO. 109-11-3
- 2. CONTACT IS PLATED OVERALL WITH .000050 NICKEL, THEN .000030 GOLD OVER CONTACT LENGTH INDICATED AND MATTE TIN ON SOLDER TAIL END.
- 3. OBSOLETE PARTS: OBSOLETE CIS STREAMLINING-PER D.RENAUD/D.SINISI

3 OBSOLETE

ASSEMBLY NO.	HSG.MATL.	COLOR	PIN MATL.	FINISH
350425-2	NYLON	NATURAL	COPPER ALLOY	GOLD
350425-1	NYLON	NATURAL	COPPER ALLOY	FRETIN

4. DIMENSION SHOWN REPRESENT PRODUCT IN DRY CONDITION. ADDITIONAL 2% GROWTH DUE TO END USE LOCATION MOISTURE ABSORPTION MAY OCCUR AND SHOULD BE ACCOUNTED FOR.

K	OBsolete 1-1, 2, 2, 2, 2	KW	4-17
	3-1, 3-2, 4-1, 4-2, 5-2, 5-1		
	6-1, 6-2, 7-1, 7-2, 8-1, 8-2		
	9-1, 9-2 CM 473	RS	86

REV	DESCRIPTION	BY	DATE
K2	REVISED PER ECR-21-117185	PJ	VS 20OCT 2021
K1	REV PER ECO-10-000445	KK	AEG 09JAN
	RESTORED	RS	9/1/85
	REV. PER M-7375	SS	QW 8/2/85
	REVISED M-6388, M-6394	PAS	DH 7/1/83
	ADDS NOTE 2, M-6694	WAF	DH 4/2/85
	REV. Tail Length M-4161	WAF	DH 5/24/85
	REVISED M-4161	MF	DH 3-7-77
	ECN M-3871	PHN	DH 7/10/76
	ECN 3452	GY	SE 7/10/76
	ECN M-3156	PL	WV 4/1/76
	REDRAW ADDED COLORS	WZ	WV 4/1/85
LTR	REVISION RECORD	DR	CON DATE

NUMBER	NAME	REMARKS
350425	DESCRIPTION	REMARKS
<p>1978 BY AMP INCORPORATED. ALL RIGHTS RESERVED. AMP PRODUCTS COVERED BY PATENTS AND/OR PATENTS PENDING.</p> <p>9. Schuman 6-27-73</p> <p>6-28-73</p> <p>Thurman 1-3</p> <p>6/28/75</p>		
MATERIAL AND FINISH		CUSTOMER COPY REFERENCE ONLY
SEE TABLE		TE Connectivity
WIRE - GAGE - INSULATION		TYPE
TOLERANCE EXC. PT		LOC
AS NOTED		CM B
REV		350425
CIRCUIT MATE - N - LOK		P.C. BOARD PIN HEADER