



User Manual

SOM-7562

Trusted ePlatform Services

ADVANTECH

Copyright

The documentation and the software included with this product are copyrighted 2010 by Advantech Co., Ltd. All rights are reserved. Advantech Co., Ltd. reserves the right to make improvements in the products described in this manual at any time without notice.

No part of this manual may be reproduced, copied, translated or transmitted in any form or by any means without the prior written permission of Advantech Co., Ltd. Information provided in this manual is intended to be accurate and reliable. However, Advantech Co., Ltd. assumes no responsibility for its use, nor for any infringements of the rights of third parties, which may result from its use.

Acknowledgements

AMI is a trademark of American Megatrends Inc.

VIA is a trademark of VIA Technologies, Inc.

IBM, PC/AT, PS/2 and VGA are trademarks of International Business Machines Corporation.

Intel and Pentium are trademarks of Intel Corporation.

Microsoft Windows® is a registered trademark of Microsoft Corp.

RTL is a trademark of Realtek Semi-Conductor Co., Ltd.

ESS is a trademark of ESS Technology, Inc.

UMC is a trademark of United Microelectronics Corporation.

SMI is a trademark of Silicon Motion, Inc.

Creative is a trademark of Creative Technology LTD.

CHRONTEL is a trademark of Chrontel Inc.

All other product names or trademarks are properties of their respective owners.

Product Warranty (2 years)

Advantech warrants to you, the original purchaser, that each of its products will be free from defects in materials and workmanship for two years from the date of purchase.

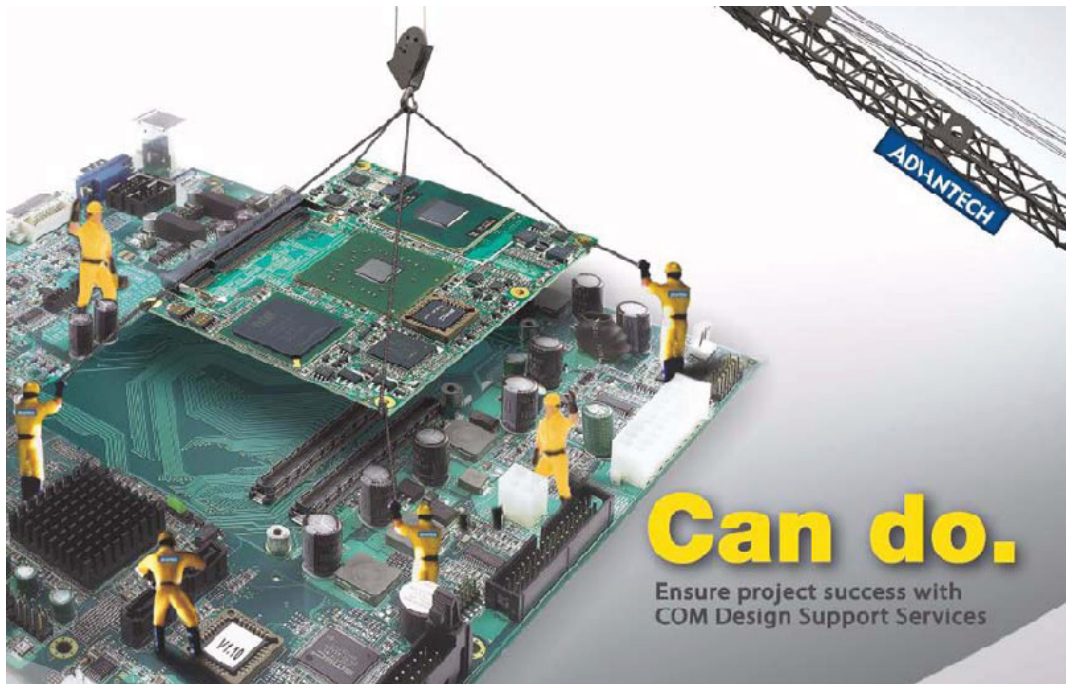
This warranty does not apply to any products which have been repaired or altered by persons other than repair personnel authorized by Advantech, or which have been subject to misuse, abuse, accident or improper installation. Advantech assumes no liability under the terms of this warranty as a consequence of such events.

Because of Advantech's high quality-control standards and rigorous testing, most of our customers never need to use our repair service. If an Advantech product is defective, it will be repaired or replaced at no charge during the warranty period. For out-of-warranty repairs, you will be billed according to the cost of replacement materials, service time and freight. Please consult your dealer for more details.

If you think you have a defective product, follow these steps:

1. Collect all the information about the problem encountered. (For example, CPU speed, Advantech products used, other hardware and software used, etc.) Note anything abnormal and list any onscreen messages you get when the problem occurs.
2. Call your dealer and describe the problem. Please have your manual, product, and any helpful information readily available.
3. If your product is diagnosed as defective, obtain an RMA (return merchandise authorization) number from your dealer. This allows us to process your return more quickly.
4. Carefully pack the defective product, a fully-completed Repair and Replacement Order Card and a photocopy proof of purchase date (such as your sales receipt) in a shippable container. A product returned without proof of the purchase date is not eligible for warranty service.
5. Write the RMA number visibly on the outside of the package and ship it prepaid to your dealer.

COM Design Support



A Series of Value-Added Services for Carrier Board Development

Advantech COM Design Support Services help customers to reduce the time and work involved with designing new carrier boards. We handle the complexities of technical research and greatly minimize the development risk associated with carrier boards.

COM Product & Support Services

- Full Range of COM Product Offerings
- Comprehensive Document Support

Design Assistance Services

- Schematic Review
- Placement and Layout Review
- Debugging Assistance Services
- General/Special Reference Design Database

Thermal Solution Services

- Standard Thermal Solutions
- Customized Thermal Solutions

Embedded Software Services

- Embedded OS
- BIOS Customization
- Application Library: SUSI (Secure and Unified Smart Interface)

A Series of Value-Added Services for Carrier Board Development

Advantech COM Design Support Services help customers to reduce the time and work involved with designing new carrier boards. We handle the complexities of technical research and greatly minimize the development risk associated with carrier boards.

COM Product & Support Services

Advantech provides a full range of Computer on Modules including COM-Express, ETX, XTX and COM-Micro to fulfill diverse customer applications. Advantech also serves comprehensive document support to clients for project development.

Design Assistance Services

The Design Assistance Service is created to offer essential help to complete crucial development tasks: schematic review, placement review, debugging and a general/special database of technologies for reference purposes. All services reduce design risks associated with completing customer carrier boards.

Thermal Solution Services

In order to provide quicker and more flexible solutions for customer's thermal designs. Advantech provides thermal solution services including modularized thermal solutions and customized thermal solutions.

Embedded Software Services

Advantech provides Embedded Software Services to customers who integrate Advantech hardware products. Advantech Embedded Software Services include Embedded BIOS services, OS services and API Library (SUSI), Embedded Software Services help decrease design effort and project complexity, and accelerate product development.

COM Design Support Zone: <http://com.advantech.com/>

Advantech reserves the right to determine, on a case by case basis, whether or not COM Design Support Services are appropriate.

Technical Support and Assistance

1. Visit the Advantech web site at www.advantech.com/support where you can find the latest information about the product.
2. Contact your distributor, sales representative, or Advantech's customer service center for technical support if you need additional assistance. Please have the following information ready before you call:
 - Product name and serial number
 - Description of your peripheral attachments
 - Description of your software (operating system, version, application software, etc.)
 - A complete description of the problem
 - The exact wording of any error messages

Safety Instructions

1. Read these safety instructions carefully.
2. Keep this User Manual for later reference.
3. Disconnect this equipment from any AC outlet before cleaning. Use a damp cloth. Do not use liquid or spray detergents for cleaning.
4. For plug-in equipment, the power outlet socket must be located near the equipment and must be easily accessible.
5. Keep this equipment away from humidity.
6. Put this equipment on a reliable surface during installation. Dropping it or letting it fall may cause damage.
7. The openings on the enclosure are for air convection. Protect the equipment from overheating. **DO NOT COVER THE OPENINGS.**
8. Make sure the voltage of the power source is correct before connecting the equipment to the power outlet.
9. Position the power cord so that people cannot step on it. Do not place anything over the power cord.
10. All cautions and warnings on the equipment should be noted.
11. If the equipment is not used for a long time, disconnect it from the power source to avoid damage by transient overvoltage.
12. Never pour any liquid into an opening. This may cause fire or electrical shock.
13. Never open the equipment. For safety reasons, the equipment should be opened only by qualified service personnel.
14. If one of the following situations arises, get the equipment checked by service personnel:
 - The power cord or plug is damaged.
 - Liquid has penetrated into the equipment.
 - The equipment has been exposed to moisture.
 - The equipment does not work well, or you cannot get it to work according to the user's manual.
 - The equipment has been dropped and damaged.
 - The equipment has obvious signs of breakage.

Safety Precaution - Static Electricity

Follow these simple precautions to protect yourself from harm and the products from damage.

- To avoid electrical shock, always disconnect the power from your PC chassis before you work on it. Don't touch any components on the CPU card or other cards while the PC is on.
- Disconnect power before making any configuration changes. The sudden rush of power as you connect a jumper or install a card may damage sensitive electronic components.

Packing List

Before you begin installing your card, please make sure that the following materials have been shipped:

- 1 SOM-7562 module
- 1 Utility CD (including manual and driver)
- 1 heatspreader 84*55*11mm

Contents

Chapter 1	General Information	1
1.1	Introduction	2
1.2	Specifications	2
1.2.1	Standard System On Module functions	2
1.2.2	VGA/flat panel Interface.....	2
1.2.3	Audio function	3
1.2.4	Ethernet	3
1.2.5	Mechanical and environmental	3
Chapter 2	Mechanical Information	5
2.1	Board Connector	6
	Figure 2.1 SOM-7562 Locating Connectors	6
2.2	Board Mechanical Drawing	6
2.2.1	Front Side	6
	Figure 2.2 SOM-7562 Front Side Drawing	6
2.2.2	Rear Side	7
	Figure 2.3 SOM-7562 Rear Side Drawing	7
Chapter 3	BIOS Setup Information	9
	Figure 3.1 Setup program initial screen	10
3.1	Entering Setup	10
3.2	Main Setup	11
	Figure 3.2 Main setup screen	11
3.2.1	System time / System date	11
3.3	Advanced BIOS Features Setup	12
	Figure 3.3 Advanced BIOS features setup screen	12
3.3.1	CPU Configuration	12
	Figure 3.4 CPU Configuration Setting	12
3.3.2	IDE Configuration.....	13
	Figure 3.5 IDE Configuration	13
3.3.3	Floppy Configuration	14
	Figure 3.6 Floppy Configuration	14
3.3.4	Super I/O Configuration	15
	Figure 3.7 Super I/O Configuration	15
3.3.5	ACPI Settings.....	16
	Figure 3.8 ACPI Settings	16
	Figure 3.9 General ACPI Configuration	16
	Figure 3.10Advanced ACPI Configuration	17
	Figure 3.11Chipset ACPI Configuration.....	17
3.3.6	AHCI Configuration	18
	Figure 3.12Advanced ACPI Configuration	18
3.3.7	APM Configuration	19
	Figure 3.13APM Configuration	19
3.3.8	Event Log Configuration	20
	Figure 3.14Event Log Configuration	20
3.3.9	Hardware Health Configuration.....	20
	Figure 3.15Hardware Health Configuration	20
3.3.10	MPS Configuration.....	21
	Figure 3.16MPS Configuration	21
3.3.11	Smbios Configuration.....	21
	Figure 3.17Smbios Configuration	21

3.3.12	USB Configuration	22
	Figure 3.18 South Bridge ACPI Configuration	22
3.4	USB Mass Storage Device Configuration	23
	Figure 3.19 USB Mass storage Device Configuration	23
3.5	Advanced PCI/PnP Settings	23
	Figure 3.20 PCI/PNP Setup	24
3.6	Boot Settings	25
	Figure 3.21 Boot Setup Utility	25
3.6.1	Boot settings Configuration	25
	Figure 3.22 Boot Setting Configuration	25
3.7	Security Setup	26
	Figure 3.23 Password Configuration	26
3.8	Advanced Chipset Settings	27
	Figure 3.24 Advanced Chipset Settings	27
3.8.1	North Bridge Chipset Configuration	27
	Figure 3.25 North Bridge Configuration	27
	Figure 3.26 Video Function Configuration	28
3.8.2	South Bridge Chipset Configuration	29
	Figure 3.27 South Bridge Configuration	29
3.9	Exit Option	30
	Figure 3.28 Exit Option	30
3.9.1	Save Changes and Exit	30
3.9.2	Discard Changes and Exit	30
3.9.3	Load Optimal Defaults	30
3.9.4	Load Fail-Safe Defaults	30

Chapter 4 Driver Installation..... 33

4.1	Driver Introduction	34
4.2	Driver Installation	34
4.2.1	Step 1- Install Intel AHCI Disk Driver for Windows XP	34
4.2.2	Step 2- Install Intel INF Update Driver for Windows XP	35
4.2.3	Step 3- Install Intel Graphic Driver for Windows XP	35
4.2.4	Step 4- Install Audio Driver for Windows XP	35
4.2.5	Step 5- Install Intel Ethernet Driver for Windows XP	35

Appendix A Watchdog Timer..... 37

A.1	Programming the Watchdog Timer	38
	Table A.1: Index-01h	38
	Table A.2: Watchdog Timer Index 34h	38
	Table A.3: Watchdog Timer Range - Index 35h	38
	Table A.4: Watchdog Timer Index - Index 36h	39
	Table A.5: Watchdog Timer Range - Index 37h	39

Appendix B Programming GPIO..... 41

B.1	GPIO Register	42
	Table B.1: Index 04h	42
	Table B.2: Index 05h	42
	Table B.3: Index 20h	43
	Table B.4: Index 21h	43
	Table B.5: Index 22h	44

Appendix C System Assignments..... 45

C.1	System I/O Port	46
-----	-----------------------	----

	Table C.1: System I/O ports	46
C.2	DMA Channel Assignments	47
	Table C.2: DMA Channel Assignments.....	47
C.3	Interrupt Assignments	47
	Table C.3: Interrupt Assignments.....	47
C.4	Memory Map	48
	Table C.4: Memory Map.....	48

Chapter 1

General Information

This chapter gives background information on the SOM-7562 CPU System on Module.

Sections include:

- Introduction
- Specifications

1.1 Introduction

SOM-7562 is an embedded COM-Ultra Type 1 CPU module that fully complies with the PCI Industrial Computer Manufacturers PICMG COM Express standard. The new CPU module supports the Intel N450 processor with ICH8M chipset. The chipsets' graphic and memory controller are all on the same die as the CPU. The graphic engine integrates Intel Embedded Gen3.5 + GFX Core, MPEG2 Decode in HW, PCI Express and SATA interfaces. In a basic form factor of 84mm x 55mm, the SOM-7562 provides a scalable high performance and easy to integrate solution for customers' applications by utilizing a plug-in CPU module on an application-specific customer solution board. The SOM-7562 with advanced I/O capacity incorporates serial differential signaling technologies such as PCI Express, Serial ATA, USB 2.0, LVDS and HD Audio interfaces. SOM-7562 offers design partners more choices for their own applications needing higher computing speeds while maintaining a compact form factor.

SOM-7562 complies with the "Green Function" standard and supports Doze, Standby and Suspend modes. The small size (84 mm x 55 mm) and use of one high capacity connector based on the proven COM-Ultra form factor, allow COM-Ultra modules to be easily and securely mounted onto a customized solution board or our standard SOM-DB5700 development board.

The SOM-7562 is a highly integrated multimedia COM module that combines audio, video, and network functions. It provides excellent calculated ability by Intel® latest Pineview-M processor, single channel LVDS interface for middle size TFT LCD display, on-board DDR2 memory up to 1 GB (default 512 MB), high definition audio interface (Azalia).

1.2 Specifications

1.2.1 Standard System On Module functions

- **CPU:** Onboard Intel® Atom N450 processor
(Detail CPU support information please contact your sales representative)
- **BIOS:** AMI 16Mb Flash BIOS
- **Chipset:** Intel® ICH8-M Chipset
- **Cache memory:** Intel® processor integrated L2 cache 512 KB
- **System memory:** 512 MB DDR2 memory down (optional up to 1GB)
- **Power management:** Supports power saving modes including Normal / Standby / Suspend modes. ACPI 2.0 compliant
- **Onboard Flash:** 1 / 2 GB on-board flash
- **SATA interface:** 3 SATAII Channels
- **Watchdog timer:** 256 levels timer interval, from 0 to 255 sec or min setup by software, jumper less selection, generates system reset
- **USB interface:** Supports 8 USB 2.0 ports
- **Expansion Interface:** Supports LPC, 5 PCIe x1 (1 PCIe x4 or 1 PCIe x2 option)

1.2.2 VGA/flat panel Interface

- **Chipset:** Gen 3.5 DX9, MPEG2 Decode controller
- **Frame buffer:** Intel DVMT 4.0 supported up to 384MB system memory
- **Display type:** Dual display supports of CRT and LVDS.

Supports 18-bit single channel LVDS interface

- **Display mode:** CRT Mode: Support up to 1400 x 1050
LCD Mode: Support up to 1366 x 768

1.2.3 Audio function

- **Audio interface:** Intel high definition audio interface

1.2.4 Ethernet

- **Chipset:**
1000Mbps: Intel 82567V Gigabit Ethernet. Base on IEEE 10BASE-T, 100BASE-TX and 1000BASE-T standard.

1.2.5 Mechanical and environmental

- **Dimensions:** COM-Ultra form-factor, 85 mm x 55 mm (3.3" x 2.17")
- **Power supply voltage:** +12 V power only
(+5VSB is need for ACPI and ATX power)
- **Power requirement:**
Typical: (1GB DDRII 667)
+12 V @ 566 mA
- **Operating temperature:** 0 ~ 60°C (32 ~ 140°F)
- **Operating humidity:** 0% ~ 90% relative humidity, non-condensing
- **Weight:** 0.103 Kg (weight of total package)

Chapter 2

Mechanical Information

This chapter gives mechanical and connector information on the SOM-7562 CPU System on Module.

Sections include:

- Connector Information
- Mechanical Drawing

2.1 Board Connector

There are two connectors at the rear side of SOM-7562 for connecting to carrier board.

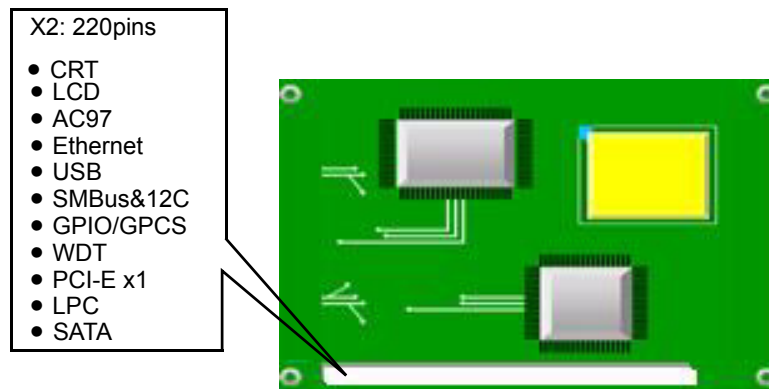


Figure 2.1 SOM-7562 Locating Connectors

■ Pin Assignments for X2 connector

Please refer to COM-Express Design and Specification Guide, Chapter 2

2.2 Board Mechanical Drawing

2.2.1 Front Side

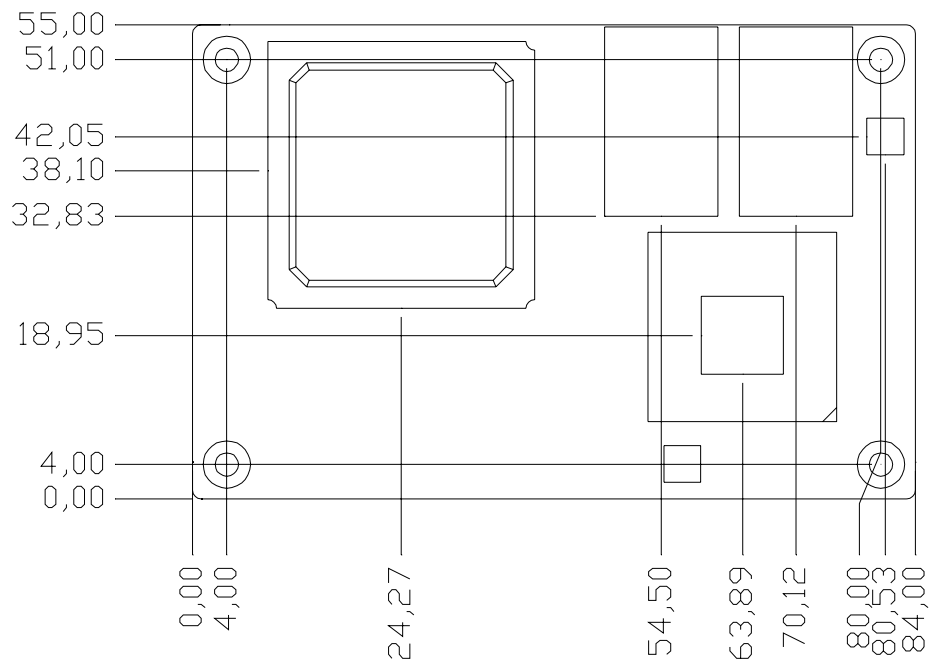


Figure 2.2 SOM-7562 Front Side Drawing

2.2.2 Rear Side

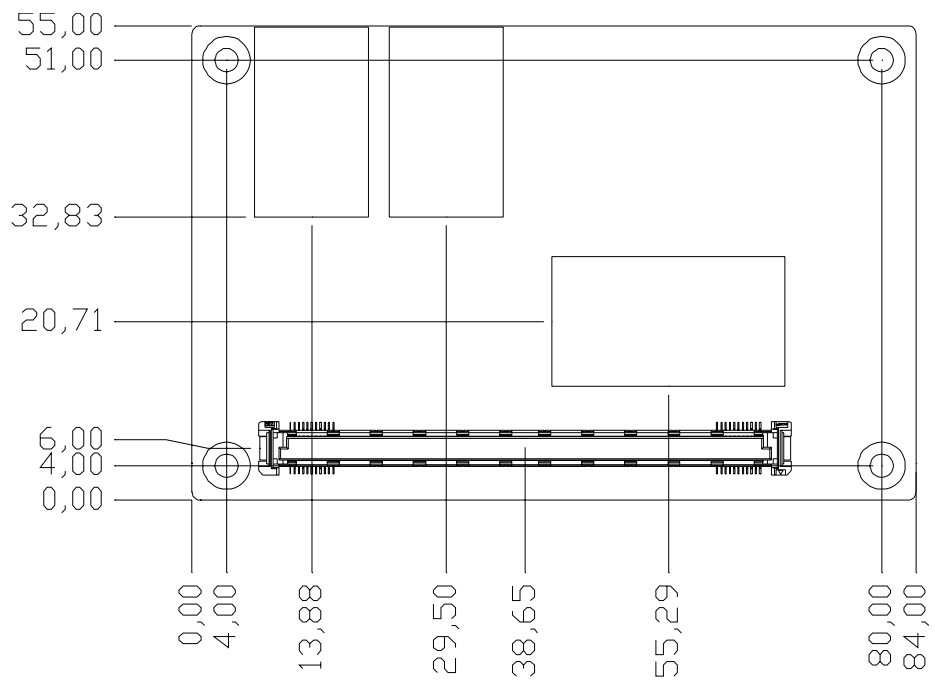


Figure 2.3 SOM-7562 Rear Side Drawing

Chapter 3

BIOS Setup Information

This chapter gives basic BIOS upgrade and Setup information on the SOM-7562 CPU System on Module.

Sections include:

- Safety Precautions
- BIOS Update
- Basic BIOS Setup

AMIBIOS has been integrated into many motherboards for over a decade. With the AMIBIOS Setup program, users can modify BIOS settings and control various system features. This chapter describes the basic navigation of the SOM-7562 BIOS setup screens.

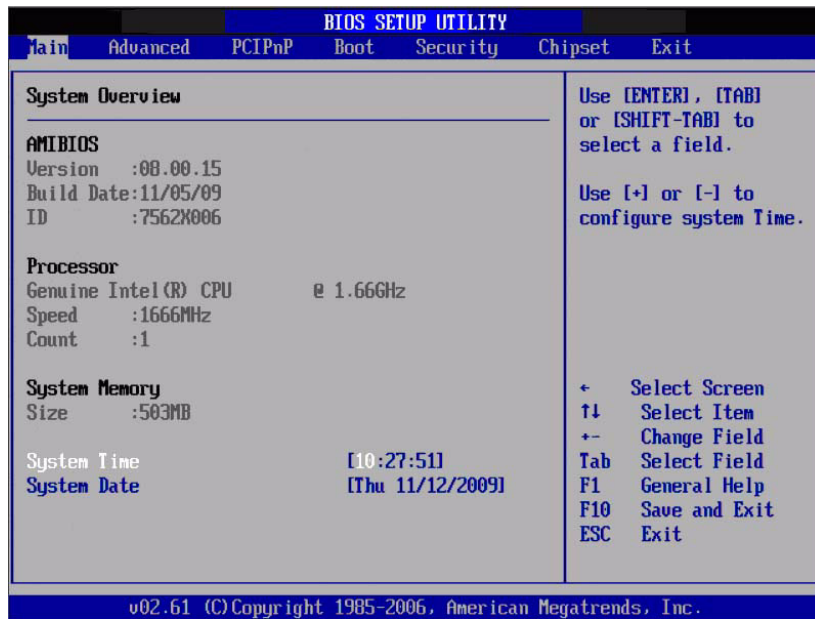


Figure 3.1 Setup program initial screen

AMI's BIOS ROM has a built-in Setup program that allows users to modify the basic system configuration. This information is stored in battery-backed CMOS so it retains the Setup information when the power is turned off.

3.1 Entering Setup

Turn on the computer and check for the “patch code”. If there is a number assigned to the patch code, the on board CPU is supported by current BIOS. If there is no number assigned to the patch code, please contact an Advantech application engineer to obtain an up-to-date patch code file, to ensure the system status of CPU is valid. Then press to enter Setup menu.

3.2 Main Setup

When users first enter the BIOS Setup Utility, users will enter the Main setup screen. Users can always return to the Main setup screen by selecting the Main tab. There are two Main Setup options. They are described in this section. The Main BIOS Setup screen is shown below.

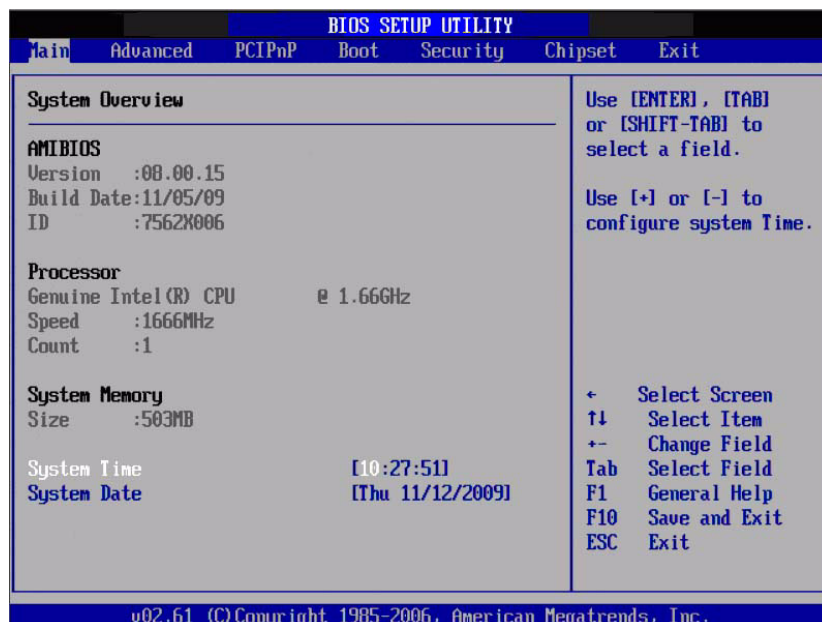


Figure 3.2 Main setup screen

The Main BIOS setup screen has two main frames. The left frame displays all the options that can be configured. Grayed-out options cannot be configured; options in blue can. The right frame displays the key legend.

Above the key legend is an area reserved for a text message. When an option is selected in the left frame, it is highlighted in white. Often a text message will accompany it.

3.2.1 System time / System date

Use this option to change the system time and date. Highlight System Time or System Date using the <Arrow> keys. Enter new values through the keyboard. Press the <Tab> key or the <Arrow> keys to move between fields. The date must be entered in MM/DD/YY format. The time must be entered in HH:MM:SS format.

3.3 Advanced BIOS Features Setup

Select the Advanced tab from the SOM-7562 setup screen to enter the Advanced BIOS Setup screen. Users can select any item in the left frame of the screen, such as CPU Configuration, to go to the sub menu for that item. Users can display an Advanced BIOS Setup option by highlighting it using the <Arrow> keys. All Advanced BIOS Setup options are described in this section. The Advanced BIOS Setup screens are shown below. The sub menus are described on the following pages.

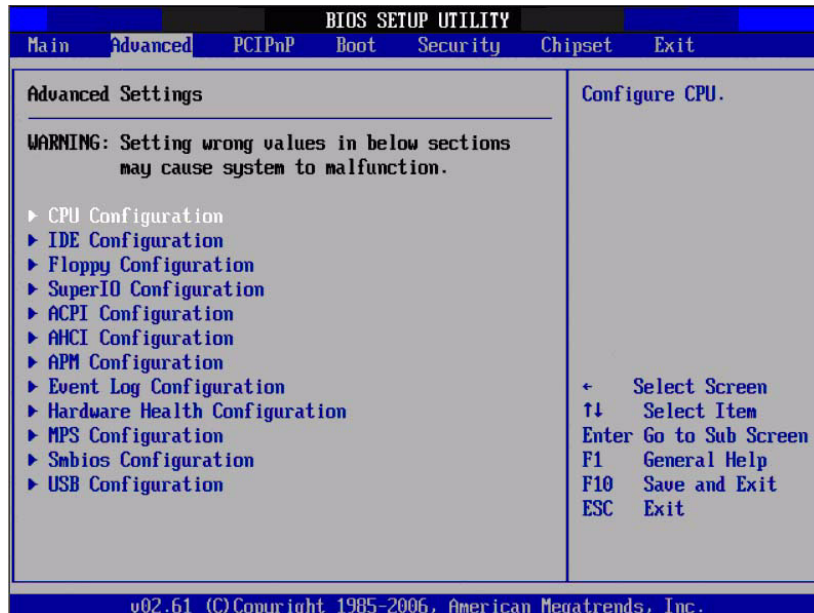


Figure 3.3 Advanced BIOS features setup screen

3.3.1 CPU Configuration

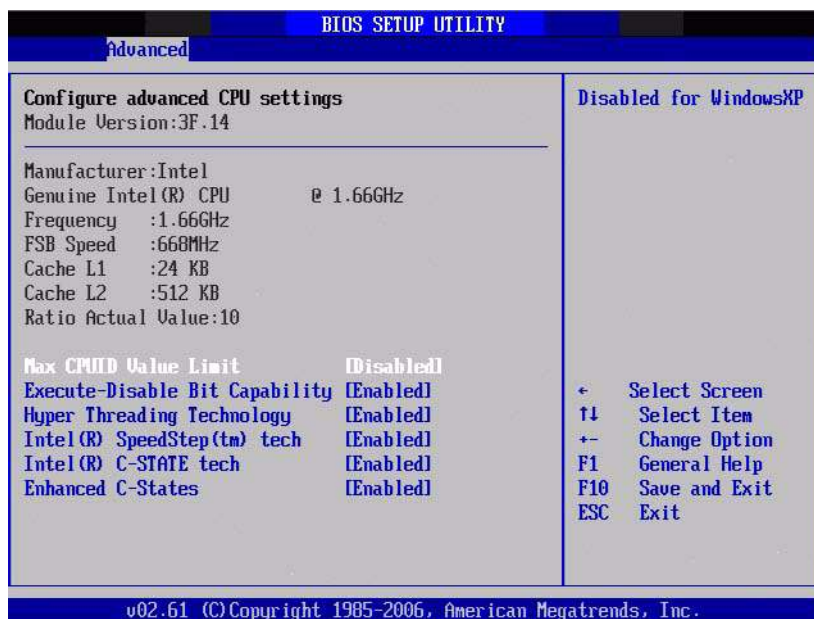


Figure 3.4 CPU Configuration Setting

Max CPUID Value Limit

This item allows users to limit the maximum value of CPUID.

Execute-Disable Bit Capability

This item allows users to enable or disable the No-Execution page protection technology.

Hyper Threading Technology

This item allows users to enable or disable Intel® Hyper Threading technology.

Intel® SpeedStep™ tech

CPU runs at its default speed if disabled; CPU speed is controlled by the operating system if enabled.

Intel® C-STATE tech

This item allows the CPU to save more power in idle mode.

Enhanced C-States

Enable / Disable Intel® C-STATE technology.

3.3.2 IDE Configuration

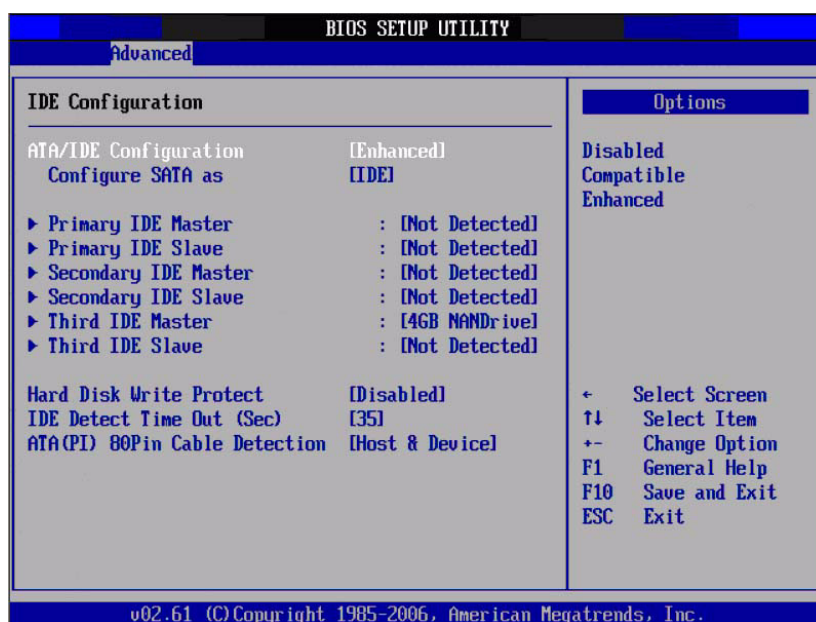


Figure 3.5 IDE Configuration

ATA/IDE Configuration

This item allows users to select Disabled / Compatible / Enhanced.

Legacy IDE Channels

When set to Enhanced mode, users can select IDE or AHCI mode. When select Compatible mode, users can select “SATA only”, “SATA Primary, PATA Secondary” or “PATA only”.

Primary/Secondary/Third IDE Master/Slave

BIOS auto detects the presence of IDE device, and displays the status of auto detection of IDE device.

- Type: Select the type of SATA driver.[Not Installed][Auto][CD/DVD][ARMD]
- LBA/Large Mode: Enables or Disables the LBA mode.
- Block (Multi-Sector Transfer): Enables or disables data multi-sectors transfers.
- PIO Mode: Select the operating mode of PIO.
- DMA Mode: Select the operating mode of DMA
- S.M.A.R.T.: Select the smart monitoring, analysis, and reporting technology.
- 32Bit Data Transfer: Enables or disables 32-bit data transfer.

Hard Disk Write Protect

Disable/Enable device write protection. This will be effective only if device is accessed through BIOS.

IDE Detect Time Out (Sec)

This item allows users to select the time out value for detecting ATA/ATAPI device(s).

ATA(PI) 80Pin Cable Detection

This item allows users to select the way to detect IDE 80 pin cable.

3.3.3 Floppy Configuration

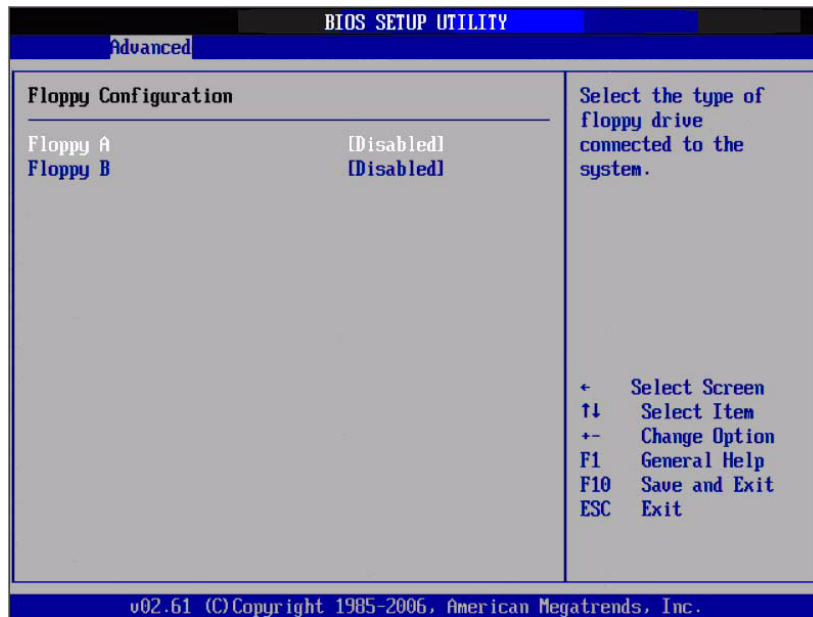


Figure 3.6 Floppy Configuration

Floppy A/B

Select the type of floppy drive, if any are connected to the system. It is recommend to disable the floppy driver during installation if no floppy drive is connected.

3.3.4 Super I/O Configuration

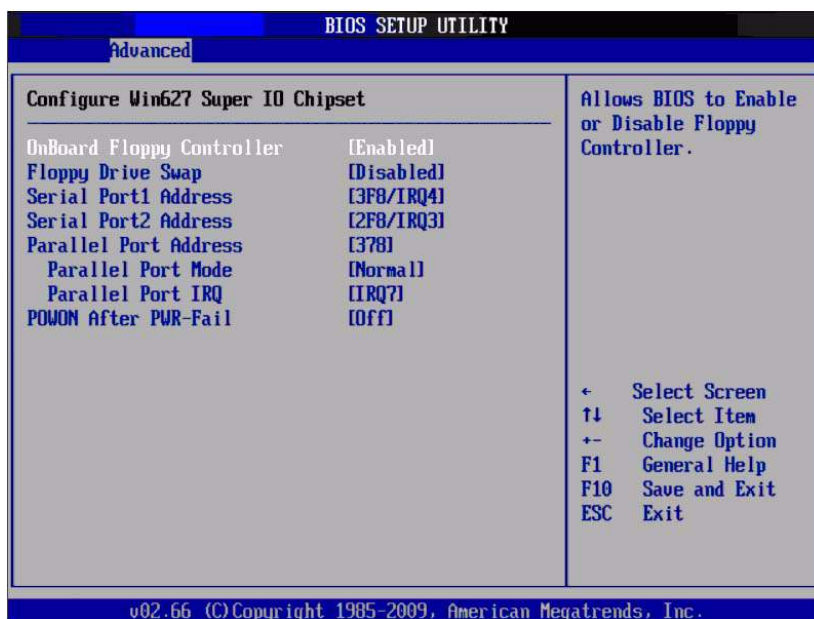


Figure 3.7 Super I/O Configuration

Onboard Floppy Controller

This item allows users to enable or disable the onboard floppy controller.

Floppy Drive Swap

This item allows users to enable or disable the floppy swap function.

Serial Port1 / Port2 address

This item allows users to select the base addresses and IRQs of serial port1 and port2.

Parallel Port Address

This item allows users to select the base address of the parallel port.

Parallel Port Mode

This item allows users to select the mode of the parallel port.

Parallel Port IRQ

This item allows users to select the IRQ of the parallel port.

POWON After PWR-Fail

This item allows users to select off, on and former status.

3.3.5 ACPI Settings



Figure 3.8 ACPI Settings

3.3.5.1 General ACPI Configuration



Figure 3.9 General ACPI Configuration

Suspend mode

Select the ACPI state used for system suspend.

Report Video on S3 Resume

This item allows users to invoke VGA BIOS POST on S3/STR resume.

3.3.5.2 Advanced ACPI Configuration

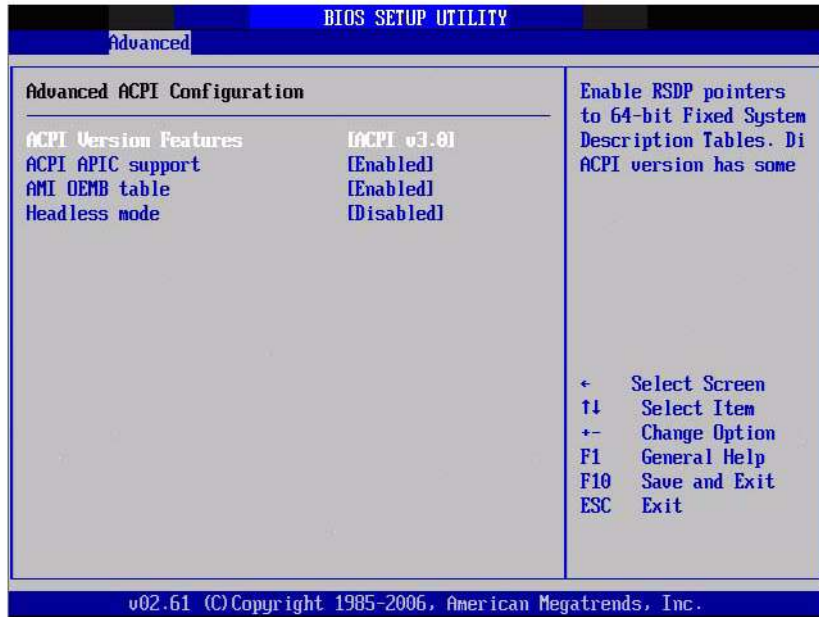


Figure 3.10 Advanced ACPI Configuration

ACPI Version Features

This item allows users to enable RSDP pointers to 64-bit fixed system description tables.

ACPI APIC support

Include APIC table pointer to RSDT pointer list.

AMI OEMB table

Include OEMB table pointer to R(x)SDT pointer lists.

Headless mode

Enable / Disable Headless operation mode through ACPI.

3.3.5.3 Chipset ACPI Configuration

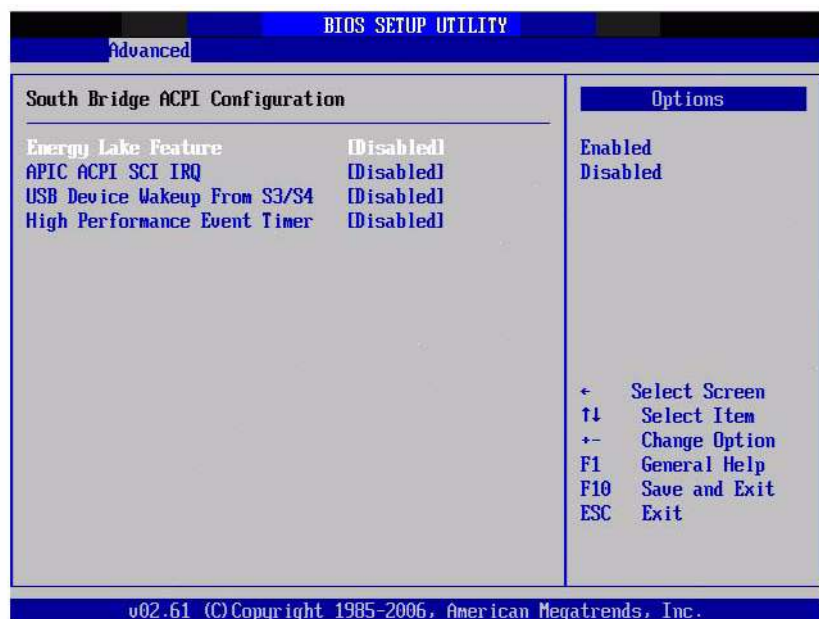


Figure 3.11 Chipset ACPI Configuration

Energy Lake Feature

This item allows users to configure Intel's Energy Lake power management technology.

APIC ACPI SCI IRQ

Enable/Disable APIC ACPI SCI IRQ.

USB Device Wakeup From S3/S4

Enable/Disable USB Device Wakeup from S3/S4.

High Performance Event Timer

Enable/Disable High performance Event timer.

3.3.6 AHCI Configuration

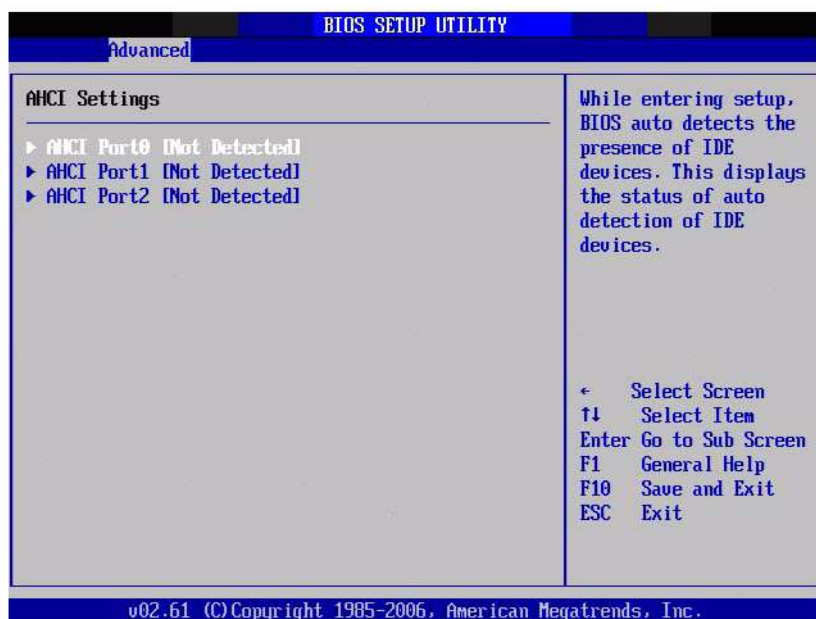


Figure 3.12 Advanced ACPI Configuration

AHCI Port0 / Port1 / Port2

While entering setup, BIOS auto detects the presence of IDE devices and displays the status of auto detection of IDE device.

3.3.7 APM Configuration



Figure 3.13 APM Configuration

Power Management/APM

Enable or disable APM.

Power Button Mode

Power on, off or enter suspend mode when the power button is pressed. The following options are also available.

Video Power Down Mode

Power down video in suspend or standby mode.

Hard Disk Power Down Mode

Power down Hard Disk in suspend or standby mode.

Standby Time Out

Go into Standby in the specified time.

Suspend Time Out

Go into Suspend in the specified time.

Resume On Ring

Enable / Disable RI to generate a wake event.

Resume On PME#

Enable / Disable PME to generate a wake event.

Resume On RTC Alarm

Enable / Disable RTC to generate a wake event.

3.3.8 Event Log Configuration

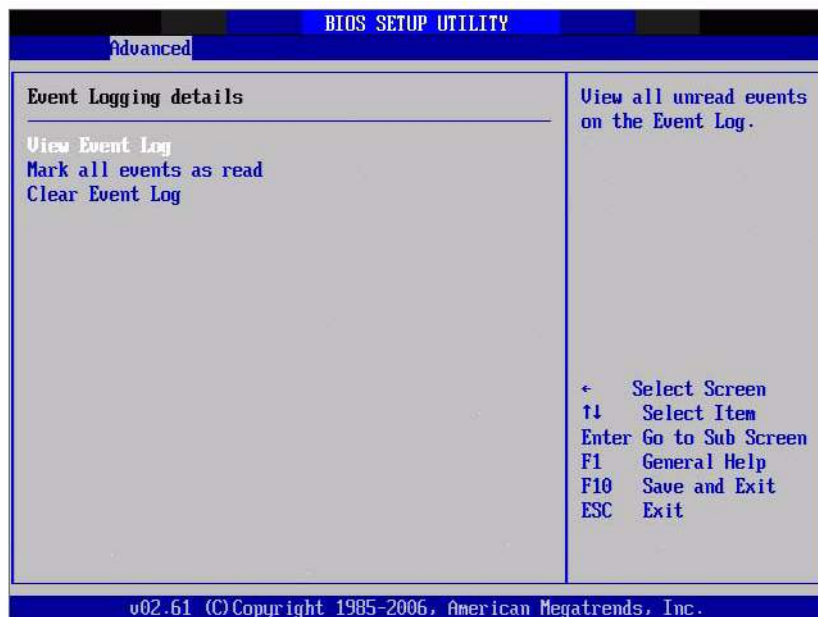


Figure 3.14 Event Log Configuration

View Event Log

View all unread events in the event Log.

Mark all events as read

Mark all unread events as read.

Clear Event Log

Discard all events in the event Log.

3.3.9 Hardware Health Configuration



Figure 3.15 Hardware Health Configuration

H/W Health Function

This item allows users to display or hide the status of H/W monitor.

ACPI Critical Shutdown Temp

This item allows users to set the value of CPU shutdown temperature in ACPI OS.

Temperature & Voltage Information

Local (System) / Remote (CPU) Temperature

VBAT / VIN / +5VSB

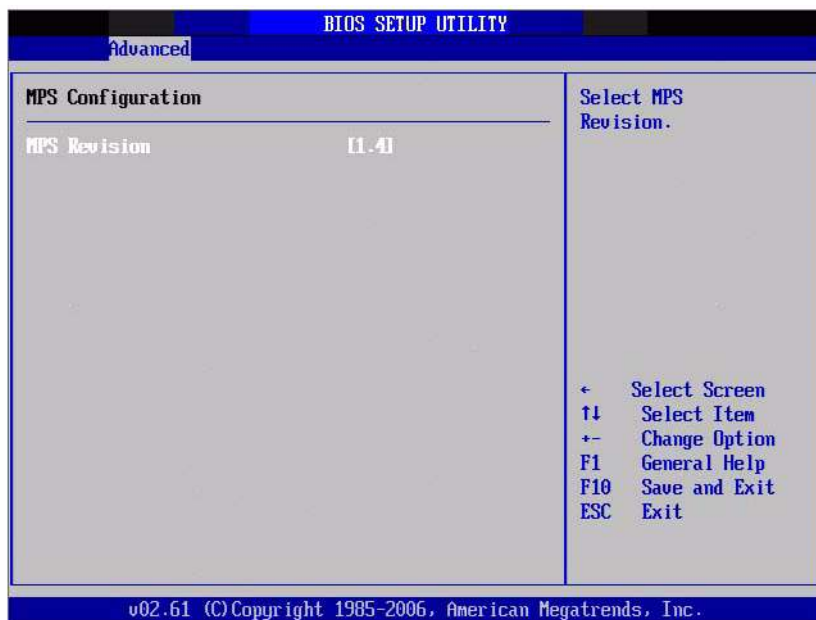
3.3.10 MPS Configuration

Figure 3.16 MPS Configuration

MPS Revision

This item allows users to select MPS reversion.

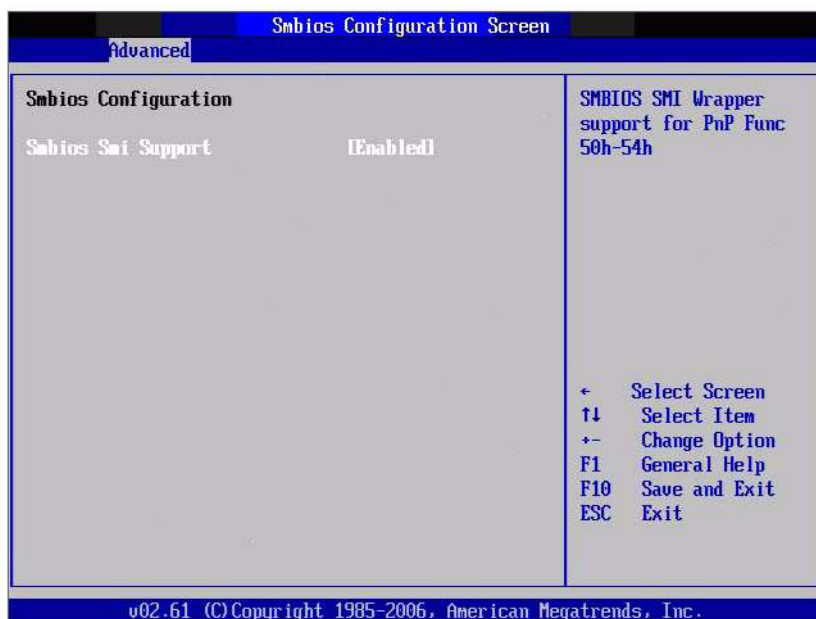
3.3.11 Smbios Configuration

Figure 3.17 Smbios Configuration

Smbios Smi Support

SMBIOS SMI wrapper support for PnP function 50h-54h.

3.3.12 USB Configuration



Figure 3.18 South Bridge ACPI Configuration

Legacy USB Support

Enable the support for legacy USB. Auto option disables legacy support if no USB devices are connected.

USB 2.0 Controller Mode

This item allows users to select HiSpeed (480 Mbps) or FullSpeed (12 Mbps).

BIOS EHCI Hand-Off

This is a workaround for the OS without EHCI hand-off support. The EHCI ownership change should claim by EHCI driver.

Hotplug USB FDD Support

A dummy FDD device is created that will be associated with the hot-plugged FDD later. Auto option creates this dummy device only if there is no USB FDD present.

3.4 USB Mass Storage Device Configuration

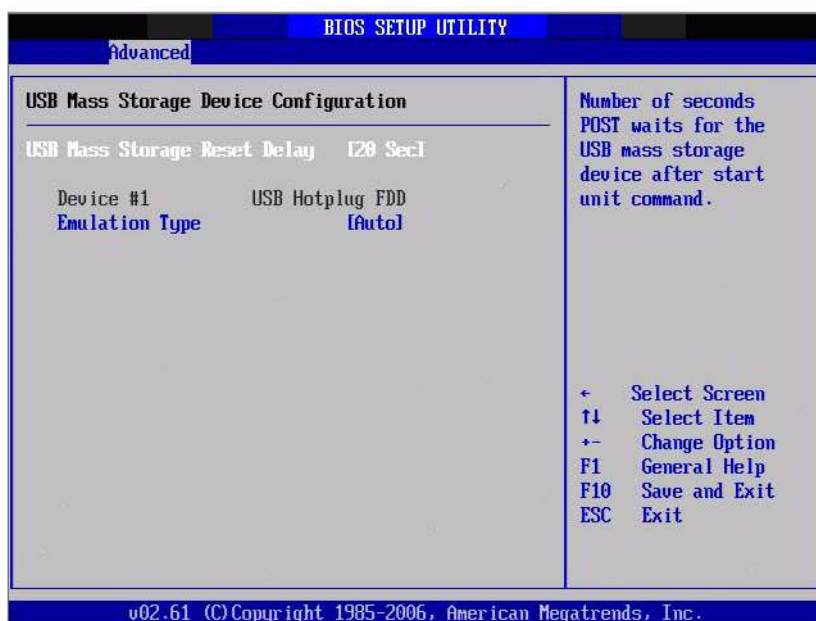


Figure 3.19 USB Mass storage Device Configuration

USB Mass Storage Reset Delay

Number of seconds POST waits for the USB mass storage device after start unit command.

Emulation Type

If Auto, USB devices less than 530MB will be emulated as Floppy and remaining as hard drive. Force FDD option can be used to force a FDD formatted drive to boot as FDD (Ex. ZIP drive).

3.5 Advanced PCI/PnP Settings

Select the PCI/PnP tab from the SOM-7562 setup screen to enter the Plug and Play BIOS Setup screen. Users can display a Plug and Play BIOS Setup option by highlighting it using the <Arrow> keys. All Plug and Play BIOS Setup options are described in this section. The Plug and Play BIOS Setup screen is shown below.



Figure 3.20 PCI/PNP Setup

Clear NVRAM

Set this value to force the BIOS to clear the Non-Volatile Random Access Memory (NVRAM). The Optimal and Fail-Safe default setting is No.

Plug & Play O/S

When set to No, the BIOS configures all devices in the system. If set to "Yes", and the OS supports Plug & Play, then rebooting the system is not required after the OS finishes configuration of the plug and play devices.

PCI Latency Timer

Value in units of PCI clocks for PCI device latency timer register.

Allocate IRQ to PCI VGA

When set to Yes will assign IRQ to PCI VGA card if the card requests an IRQ. When set to No the BIOS will not assign an IRQ to PCI VGA card even if the card requests it.

Palette Snooping

This item is designed to solve problems caused by some non-standard VGA cards.

PCI IDE BusMaster

When set to enable BIOS, it uses PCI bus mastering for reading/writing to IDE drives.

OffBoard PCI/ISA IDE Card

Some PCI IDE cards may require this to be set to the PCI slot number that is holding the card. When set to Auto, it will work for most PCI IDE cards.

IRQ3 / 4 / 5 / 7 / 9 / 10 / 11

This item allows users respectively assign an interruptive type for IRQ-3, 4, 5, 7, 9, 10, 11.

DMA Channel 0 / 1 / 3 / 5 / 6 / 7

When set to Available will specified DMA is available to be used by PCI/PnP devices. When set to Reserved will specified DMA will Reserved for use by legacy ISA devices.

Reserved Memory Size

This item allows users to reserved size of memory block for legacy ISA device.

3.6 Boot Settings



Figure 3.21 Boot Setup Utility

3.6.1 Boot settings Configuration

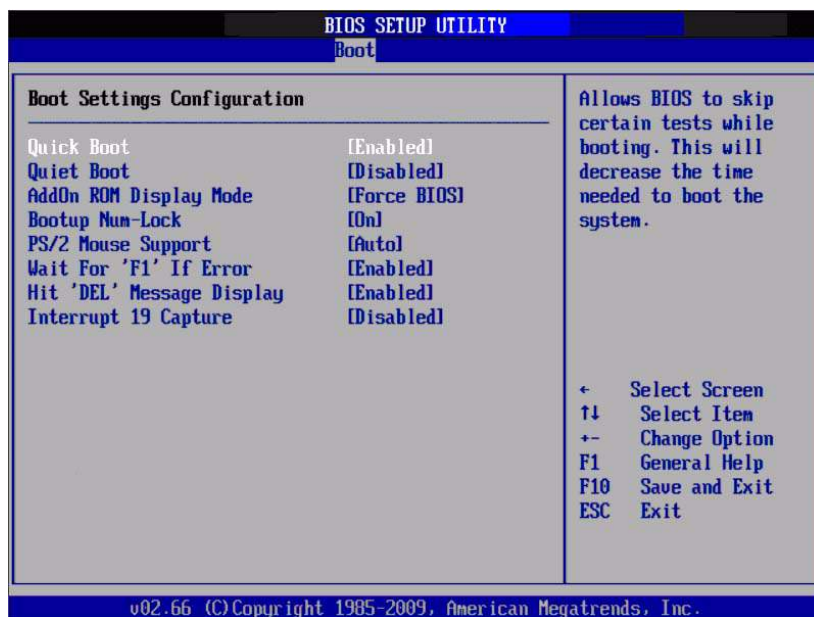


Figure 3.22 Boot Setting Configuration

Quick Boot

This item allows BIOS to skip certain tests while booting. This will decrease the time needed to boot the system.

Quiet Boot

If this option is set to Disabled, the BIOS displays normal POST messages. If Enabled, an OEM Logo is shown instead of POST messages.

AddOn ROM Display Mode

Set display mode for option ROM.

Bootup Num-Lock

Select the Power-on state for Numlock.

PS/2 Mouse Support

Select support for PS/2 Mouse.

Wait For “F1” If Error

Wait for the F1 key to be pressed if an error occurs.

Hit “DEL” Message Display

Displays - Press DEL to run Setup in POST.

Interrupt 19 Capture

This item allows option ROMs to trap interrupt 19.

3.7 Security Setup



Figure 3.23 Password Configuration

Select Security Setup from the SOM-7562 Setup main BIOS setup menu. All Security Setup options, such as password protection and virus protection are described in this section. To access the sub menu for the following items, select the item and press <Enter>:

Change Supervisor / User Password: Select this option and press <ENTER> to access the sub menu, and then type in the password.

Boot sector Virus protection: The boot sector virus protection will warn if any program tries to write to the boot sector.

3.8 Advanced Chipset Settings



Figure 3.24 Advanced Chipset Settings

3.8.1 North Bridge Chipset Configuration



Figure 3.25 North Bridge Configuration

DRAM Frequency

This item allows users to change DRAM frequency manually.

Configure DRAM Timing by SPD

This item allows users to enable or disable detect by DRAM SPD.

Memory Hole

This item allows users to free 15 MB-16 MB of memory size for some ISA devices.

Initate Graphic Adapter

This item allows users to select which graphics controller to use as the primary boot device.

Internal Graphics Mode Select: Select the amount of system memory can be used by the Internal graphics device.



Figure 3.26 Video Function Configuration

DVMT Mode Select

Displays the active system memory mode.

DVMT/FIXED Memory

Specify the amount of DVMT / FIXED system memory to allocate for video memory.

Boot Display Device

Select boot display device at post stage.

Flat Panel Type

This item allows users to select panel resolution.

Spread Spectrum Clock

This item allows users to enable or disable spread spectrum clock.

3.8.2 South Bridge Chipset Configuration



Figure 3.27 South Bridge Configuration

USB Functions

Disabled, 2 USB Ports, 4 USB Ports, 6 USB Ports or 8 USB Ports.

USB 2.0 Controller

Enables or disables the USB 2.0 controller.

GbE controller

Enables or disables the GbE controller.

GbE LAN Boot

Enables or disables GbE LAN boot.

GbE Wake Up From S5

Enables or disables GbE LAN wake up from S5 function.

HDA Controller

Enables or disables the HDA controller.

SMBUS Controller

Enables or disables the SMBUS controller.

SLP_S4# Min. Assertion Width

This item allows users to set a delay of sorts.

PCIE Port 0 / 1 / 2 / 3 / 4

This item allows users to configure PCIE port

PCIE High Priority Port

This item allows users to set the highest priority PCIE port.

PCIE Port 0 / 1 / 2 / 3 / 4 IOxAPIC

This item allows users to enable or disable PCIE port's IOxAPIC.

3.9 Exit Option

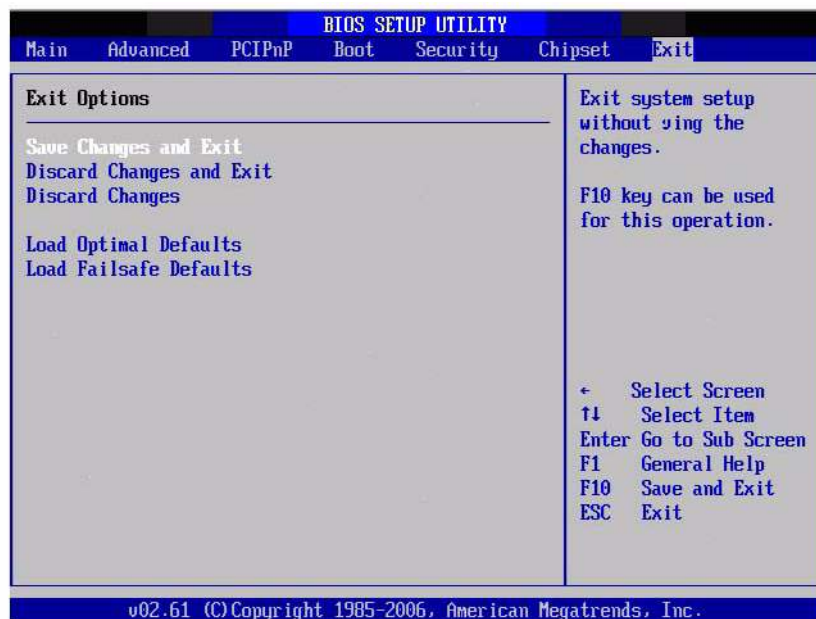


Figure 3.28 Exit Option

3.9.1 Save Changes and Exit

When users have completed system configuration, select this option to save changes, exit BIOS setup menu and reboot the computer to take effect all system configuration parameters.

1. Select Exit Saving Changes from the Exit menu and press <Enter>. The following message appears: Save Configuration Changes and Exit Now? [Ok] [Cancel]
2. Select Ok or cancel.

3.9.2 Discard Changes and Exit

Select this option to quit Setup without making any permanent changes to the system configuration.

1. Select Exit Discarding Changes from the Exit menu and press <Enter>. The following message appears: Discard Changes and Exit Setup Now? [Ok] [Cancel]
2. Select Ok to discard changes and exit. Discard Changes
3. Select Discard Changes from the Exit menu and press <Enter>.

3.9.3 Load Optimal Defaults

The SOM-7562 automatically configures all setup items to optimal settings when users select this option. Optimal Defaults are designed for maximum system performance, but may not work best for all computer applications. In particular, do not use the Optimal Defaults if the user's computer is experiencing system configuration problems. Select Load Optimal Defaults from the Exit menu and press <Enter>.

3.9.4 Load Fail-Safe Defaults

The SOM-7562 automatically configures all setup options to fail-safe settings when users select this option. Fail-Safe Defaults are designed for maximum system stability, but not maximum performance. Select Fail-Safe Defaults if the user's computer is experiencing system configuration problems.

- 1 Select Load Fail-Safe Defaults from the Exit menu and press <Enter>. The following message appears: Load Fail-Safe Defaults? [OK] [Cancel]
- 2 Select OK to load Fail-Safe defaults.

Chapter 4

Driver Installation

4.1 Driver Introduction

The CD shipped with SOM-7562 should contain the following drivers, please follow the sequence below to complete driver installation.

Step 1- Install Intel AHCI Disk Driver for Windows XP

(This step is required to be done before installing Microsoft Windows)

Step 2- Install Intel INF Update Driver for Windows XP

Step 3- Install Intel Graphic Driver for Windows XP

Step 4- Install Audio Driver for Windows XP

Step 5- Install Intel Ethernet Driver for Windows XP

Note! *For Windows XP Embedded, Windows CE 5.0/6.0 and Linux support, please contact sales representative or technical person.*



Note! *Downloading the update for Windows XP may be required for enabling USB 2.0 function. Details information please refers to below web link.*



<http://www.microsoft.com/whdc/system/bus/USB/USB2support.mspx>

4.2 Driver Installation

Insert the SOM-7562 CD into the CD-ROM device, and follow the installation process from Step 1 to Step 5.

4.2.1 Step 1- Install Intel AHCI Disk Driver for Windows XP

1. To install Intel AHCI Disk Driver, it needs to make a utility floppy disk before installing Microsoft Windows on SOM-7562, please makes this floppy disk on another Windows based PC.
2. Click on the "AHCI" folder and unzip the "F6flpy32.zip" or "F6flpy64.zip" file (depends on Windows version). Then put all files into floppy disk.
3. Insert the utility disk and start to install Microsoft Windows on SOM-7562 then press "F6" to install Intel AHCI Disk Driver.
4. At the prompt, press "S" to select the AHCI driver.
5. Follow the instructions to complete AHCI driver installation.

4.2.2 Step 2- Install Intel INF Update Driver for Windows XP

1. Click on the “Chipset” folder and double click the “infinst_autol.exe” file.
2. Follow the driver installation wizard’s instructions to complete driver installation.

4.2.3 Step 3- Install Intel Graphic Driver for Windows XP

1. Click on the “VGA” folder and double click the “Setup.exe” file.
2. Follow the driver installation wizard’s instructions to complete driver installation.

Note! Intel Graphic Driver allows users to switch display modes with hot keys.



Mode	Key 1	Key 2	Key 3
CRT	CTRL	ALT	F1
LCD	CTRL	ALT	F3
Graphic Control Panel	CTRL	ALT	F12

Press Key1 + Key2 + Key3 simultaneously to change display mode

4.2.4 Step 4- Install Audio Driver for Windows XP

1. Click on the “Audio” folder and double click the “WDM_R228_XP.exe” file.
2. Follow the driver installation wizard’s instructions to complete driver installation.

4.2.5 Step 5- Install Intel Ethernet Driver for Windows XP

1. Click on the “LAN” folder and double click the “Autorun.exe” file.
2. Follow the driver installation wizard’s instructions to complete driver installation.

Appendix **A**

Watchdog Timer

This appendix gives you the information about the watchdog timer programming on the SOM-7562 CPU System on Module.

Sections include:

- Programming the Watchdog Timer

A.1 Programming the Watchdog Timer

1. SMBus Address: Pin 3 internal pull up 100K = 0X9C, External pull up 4.7K = 0X6E.
2. Enable Watchdog Function: Configuration and function select register Index-01h.

Table A.1: Index-01h

Bit	Name	P/W	PWR	Description
5	EN_WDT10	R/W	VSB3V	Enable Rest Out. If set to 1, enable WDTOUT10#. Default is disable

3. Watchdog Control: Watchdog pulse width, output level, and status Control Register - Index 34h
Power-on default [7:0] =0000_0000b

Table A.2: Watchdog Timer Index 34h

Bit	Name	P/W	PWR	Description
7-3	Reserved		RO	
2	SEL_RST_2S	R/W	VSB3V	When set this bit to 1, the WDTOUT10 low pulse width is 2 second, if set to 0, the low pulse width is 100ms.
1	WDTOUT10_OINV	R/W	VSB3V	WDTOUT10# output level inverting. When write to 1, the output pin will be inverted. Default is low active when time is out.
0	STS_WDTOUT10	R/W	VSB3V	Indicate WDTOUT10 is occurred. Write 1 to clear this bit. Writing 0 is invalid.

4. Watchdog Timer Setup: Watchdog timer range setting and enable Register - Index 35h
Power-on default [7:0] =0000_0000b

Table A.3: Watchdog Timer Range - Index 35h

Bit	Name	P/W	PWR	Description
7	WDT10_ENABLE	R/W	VSB3V	Enable WDTOUT10 output timer. If set to 1, the WDTOUT10 timer will be started. When WDTOUT10# is asserted, low pulse is occurred.
6-0	WD1_PTIME	R/W	VSB3V	WDTOUT10 Pre-counter time in second. 000_0000b @C 0 second (default) 000_0001b @C 1 second 000_0010b @C 2 seconds : 111_1111b @C 127 seconds

5. Watchdog Timer Control Register - Index 36h (External WatchDog)
Power-on default [7:0] =0000_0000b

Table A.4: Watchdog Timer Index - Index 36h

Bit	Name	P/W	PWR	Description
7	Reserved	RO	VSB3V	Reserved. Read will return 0.
6	STS_WD_TMOUT	R/W	VSB3V	Watchdog is timeout. When the watchdog is timeout, this bit will be set to one. If set to 1, write 1 will clear this bit. Write 0, no effect.
5	WD_ENABLE	R/W	VSB3V	Enable watchdog timer. pulse is occurred.
4	WD_PULSE	R/W	VSB3V	Watchdog output level or pulse. If set 0 (default), the pin of watchdog is level output. If write 1, the pin will output with a pulse.
3	WD_UNIT	R/W	VSB3V	Watchdog unit select. Default 0 is select second. Write 1 to select minute.
2	WD_HACTIVE	R/W	VSB3V	Program WD2 output level. If set to 1 and watchdog asserted, the pin will be high. If set to 0 and watchdog asserted, this pin will drive low(default).
1	WD_PSWIDTH	R/W	VSB3V	Watchdog pulse width selection. If the pin output is selected to pulse mode. The pulse width can be choice. 00b @C 1m second. 01b @C 20m second. 10b @C 100m second. 11b @C 4 second.

The is flexible reset out with watchdog.

6. Watchdog Timer Range Register - Index 37h (External WatchDog)
Power-on default [7:0] =0000_0000b

Table A.5: Watchdog Timer Range - Index 37h

Bit	Name	P/W	PWR	Description
7	WD_TIME	RO	VSB3V	Watchdog timing range from 0 ~ 255. The unit is either second or minute programmed by the watchdog timer control register bit3.

Appendix **B**

Programming GPIO

This Appendix gives the illustration of the General Purpose Input and Output pin setting.

Sections include:

- System I/O ports

B.1 GPIO Register

1. Configuration and function select Register - Index 04h

Table B.1: Index 04h

Bit	Name	P/W	PWR	Description
7	PIN20_MODE	RW	VSB3V	0: GPIO27 1: LED27 IN this mode can use REG Ox09(bit7, 6) to select LED frequency.
4	PIN8_MODE	RW	VSB3V	0: GPIO22 1: LED22 IN this mode can use REG Ox08(bit5, 4) to select LED frequency.
3	PIN7_MODE	RW	VSB3V	0: GPIO21 1: LED21 IN this mode can use REG Ox08(bit3, 2) to select LED frequency.
2	PIN6_MODE	RW	VSB3V	0: GPIO20 1: LED20 IN this mode can use REG Ox08(bit1, 0) to select LED frequency.

2. Configuration and function select Register - Index 05h

Table B.2: Index 05h

Bit	Name	P/W	PWR	Description
3	PIN24_MODE	RW	VSB3V	0: GPIO23 1: LED23 IN this mode can use REG Ox08(bit7, 6) to select LED frequency.
2	PIN23_MODE	RW	VSB3V	0: GPIO24 1: LED24 IN this mode can use REG Ox09(bit1, 0) to select LED frequency.
1	PIN22_MODE	RW	VSB3V	0: GPIO25 1: LED25 IN this mode can use REG Ox09(bit3, 2) to select LED frequency.
0	PIN21_MODE	RW	VSB3V	0: GPIO26 1: LED26 IN this mode can use REG Ox09(bit5, 4) to select LED frequency.

3. GPIO2x Output Control Register - Index 20h

Table B.3: Index 20h				
Bit	Name	P/W	PWR	Description
7	GP27_O CTRL	RW	VSB3V	GPIO 27 output control. Set to 1 for output function. Set to 0 for input function (default).
6	GP26_O CTRL	RW	VSB3V	GPIO 26 output control. Set to 1 for output function. Set to 0 for input function (default).
5	GP25_O CTRL	RW	VSB3V	GPIO 25 output control. Set to 1 for output function. Set to 0 for input function (default).
4	GP24_O CTRL	RW	VSB3V	GPIO 24 output control. Set to 1 for output function. Set to 0 for input function (default).
3	GP23_O CTRL	RW	VSB3V	GPIO 23 output control. Set to 1 for output function. Set to 0 for input function (default).
2	GP22_O CTRL	RW	VSB3V	GPIO 22 output control. Set to 1 for output function. Set to 0 for input function (default).
1	GP21_O CTRL	RW	VSB3V	GPIO 21 output control. Set to 1 for output function. Set to 0 for input function (default).
0	GP20_O CTRL	RW	VSB3V	GPIO 20 output control. Set to 1 for output function. Set to 0 for input function (default).

4. GPIO2x Output Data Register - Index 21h

Table B.4: Index 21h				
Bit	Name	P/W	PWR	Description
7	GP27_O DATA	RW	VSB3V	GPIO 27 output data.
6	GP26_O DATA	RW	VSB3V	GPIO 26 output data.
5	GP25_O DATA	RW	VSB3V	GPIO 25 output data.
4	GP24_O DATA	RW	VSB3V	GPIO 24 output data.
3	GP23_O DATA	RW	VSB3V	GPIO 23 output data.
2	GP22_O DATA	RW	VSB3V	GPIO 22 output data.
1	GP21_O DATA	RW	VSB3V	GPIO 21 output data.
0	GP20_O DATA	RW	VSB3V	GPIO 20 output data.

5. GPIO2x Input Status Register - Index 22h

Table B.5: Index 22h

Bit	Name	P/W	PWR	Description
7	GP27_ PSTS	RW	VSB3V	Read the GPIO27 data on the pin
6	GP26_ PSTS	RW	VSB3V	Read the GPIO26 data on the pin
5	GP25_ PSTS	RW	VSB3V	Read the GPIO25 data on the pin
4	GP24_ PSTS	RW	VSB3V	Read the GPIO24 data on the pin
3	GP23_ PSTS	RW	VSB3V	Read the GPIO23 data on the pin
2	GP22_ PSTS	RW	VSB3V	Read the GPIO22 data on the pin
1	GP21_ PSTS	RW	VSB3V	Read the GPIO21 data on the pin
0	GP20_ PSTS	RW	VSB3V	Read the GPIO20 data on the pin

Appendix **C**

System Assignments

This appendix gives you the information about the system resource allocation on the SOM-7562 CPU System on Module.

Sections include:

- System I/O ports
- DMA Channel Assignments
- Interrupt Assignments
- Memory Map

C.1 System I/O Port

s

Table C.1: System I/O ports

Addr. Range (Hex)	Device
0000 - 000F	Direct memory access controller
0000 - 0CF7	PCI bus
0010 - 001F	Motherboard resources
0020 - 0021	Programmable interrupt controller
0022 - 003F	Motherboard resources
0040 - 0043	System timer
0044 - 005F	Motherboard resources
0060 - 0060	Standard 101/102-Key or Microsoft Natural PS/2 Keyboard
0061 - 0061	System speaker
0062 - 0063	Motherboard resources
0064 - 0064	Standard 101/102-Key or Microsoft Natural PS/2 Keyboard
0065 - 006F	Motherboard resources
0070 - 0071	System CMOS/real time clock
0072 - 007F	Motherboard resources
0080 - 0080	Motherboard resources
0081 - 0083	Direct memory access controller
0084 - 0086	Motherboard resources
0087 - 0087	Direct memory access controller
0088 - 0088	Motherboard resources
0089 - 008B	Direct memory access controller
008C - 008E	Motherboard resources
008F - 008F	Direct memory access controller
0090 - 009F	Motherboard resources
00A0 - 00A1	Programmable interrupt controller
00A2 - 00BF	Motherboard resources
00C0 - 00DF	Direct memory access controller
00E0 - 00EF	Motherboard resources
00F0 - 00FF	Numeric data processor
01F0 - 01F7	Primary IDE Channel
0274 - 0277	ISAPNP Read Data Port
0279 - 0279	ISAPNP Read Data Port
02F8 - 02FF	Communications Port (COM2)
0378 - 037F	Printer Port (LPT1)
03B0 - 03BB	Intel(R) Graphic Media Accelerator 3150
03C0 - 03DF	Intel(R) Graphic Media Accelerator 3150
03F0 - 03F5	Standard floppy disk controller
03F6 - 03F6	Primary IDE Channel
03F7 - 03F7	Standard floppy disk controller
03F8 - 03FF	Communications Port (COM1)
0400 - 041F	Intel(R) ICH8 Family SMBus Controller ®C 293E
04D0 - 04D1	Motherboard resources
0500 - 053F	Motherboard resources
0800 - 087F	Motherboard resources

Table C.1: System I/O ports

0A00 - 0A0F	Motherboard resources
0A79 - 0A79	ISAPNP Read Data Port
0D00 - FFFF	PCI bus
D080 - D087	Intel(R) Graphic Media Accelerator 3150
D400 @C D41F	Intel 82567V-3 Gigabit Network Connection
D480 - D49F	Standard Universal PCI to USB Host Controller
D800 @C D81F	Intel ICH8 Family USB Universal Host Controller - 2832
D880 @C D89F	Intel ICH8 Family USB Universal Host Controller - 2831
DC00 @C DC1F	Intel ICH8 Family USB Universal Host Controller - 2830
E080 @C E08F	Intel ICH8M 3 port Serial ATA Storage Controller - 2828
E400 @C E40F	Intel ICH8M 3 port Serial ATA Storage Controller - 2828
E480 @C E483	Intel ICH8M 3 port Serial ATA Storage Controller - 2828
E800 @C E807	Intel ICH8M 3 port Serial ATA Storage Controller - 2828
E880 @C E883	Intel ICH8M 3 port Serial ATA Storage Controller - 2828
EC00 @C EC07	Intel ICH8M 3 port Serial ATA Storage Controller - 2828
FFA0 @C FFAF	Intel ICH8M Ultra ATA Storage Controller - 2850

C.2 DMA Channel Assignments

Table C.2: DMA Channel Assignments

Channel	Function
0	Available
1	Available
2	Standard floppy disk controller
3	Available
4	Direct memory access controller
5	Available
6	Available
7	Available

C.3 Interrupt Assignments

Table C.3: Interrupt Assignments

Interrupt#	Interrupt source
NMI	Parity error detected
IRQ 0	System timer
IRQ 1	Standard 101/102-Key or Microsoft Natural PS/2 Keyboard
IRQ 2	Available
IRQ 3	Communications Port (COM2)
IRQ 4	Communications Port (COM1)
IRQ 5	Available
IRQ 6	Standard floppy disk controller
IRQ 7	Available
IRQ 8	System CMOS/real time clock

Table C.3: Interrupt Assignments

IRQ 9	Microsoft ACPI-Compliant System
IRQ 10	Intel ICH8 Family SMBus Controller - 283E
IRQ 11	Available
IRQ 12	PS/2 Compatible Mouse
IRQ 13	Numeric data processor
IRQ 14	Primary IDE Channel
IRQ 15	Available
IRQ 16	Intel(R) Graphic Media Accelerator 3150
IRQ 16	Standard Universal PCI to USB Host Controller
IRQ 18	Intel(R) ICH8 Family USB Universal Host Controller - 2832*
IRQ 18	Intel(R) ICH8M 3 port Serial ATA Host Controller - 2828
IRQ 19	Intel(R) ICH8 Family USB Universal Host Controller - 2831*
IRQ 21	Microsoft UAA Bus Driver for High Definition Audio
IRQ 23	Intel(R) 82567V-3 Gigabit Network Connection*
IRQ 23	Intel ICH8 Family USB Universal Host Controller - 2830*
IRQ 23	Intel ICH8 Family USB Universal Host Controller - 2836*

*USB and Ethernet IRQ is automatically set by the system.

C.4 Memory Map

Table C.4: Memory Map

Addr. Range (Hex)	Device
00000000 - 0009FFFF	System board
000A0000 - 000BFFFF	Intel(R) Graphic Media Accelerator 3150
000A0000 - 000BFFFF	PCI Bus
000C0000 - 000CFFFF	System board
000D0000 - 000DFFFF	PCI bus
000E0000 - 000FFFFF	System board
00100000 - 79BFFFFF	System board
1F700000 - DFFFFFFF	PCI Bus
D0000000 - DFFFFFFF	Intel(R) Graphic Media Accelerator 3150
E0000000 - EFFFFFFF	Motherboard resource
F0000000 - FED8FFFF	PCI Bus
FE980000 @C FE9FFFFF	Intel(R) Graphic Media Accelerator 3150
FEA00000 - FEAFFFFF	Intel(R) Graphic Media Accelerator 3150
FEB00000 @C FEB7FFFF	Intel(R) Graphic Media Accelerator 3150
FEB00000 @C FEBDFFFF	Intel 82567V-3 Gigabit Network Connection
FEBF8000 - FEBFBFFF	Microsoft UAA Bus Driver for High Definition Audio
FEBFE000 - FEBFEFFF	Intel 82567V-3 Gigabit Network Connection
FEBFF800 - FEBFFBFF	Intel ICH8 Family USB2 Enhanced Host Controller - 2836
FEBFFC00 - FEBFFCFF	Intel ICH9 Family SMBus Controller @C 293E
FEC00000 - FEC00FFF	Motherboard resources
FED14000 - FED19FFF	System board
FED1C000 - FED1FFFF	Motherboard resources
FED20000 @C FED3FFFF	Motherboard resources

Table C.4: Memory Map		
FED40000 @C FED8FFFF		Motherboard resources
FED90000 @C FED93FFF		System board
FED90000 @C FFFFFFFF		System board
FEE00000 - FEE00FFF		Motherboard resources
FFB00000 - FFBFFFFFF		Intel 82802 Firmware Hub Device
FFC00000 - FFEFFFFFF		Motherboard resources
FFF00000 - FFFFFFFF		Intel 82802 Firmware Hub Device

Trusted ePlatform Services

ADVANTECH

www.advantech.com

Please verify specifications before quoting. This guide is intended for reference purposes only.

All product specifications are subject to change without notice.

No part of this publication may be reproduced in any form or by any means, electronic, photocopying, recording or otherwise, without prior written permission of the publisher.

All brand and product names are trademarks or registered trademarks of their respective companies.

© Advantech Co., Ltd. 2010