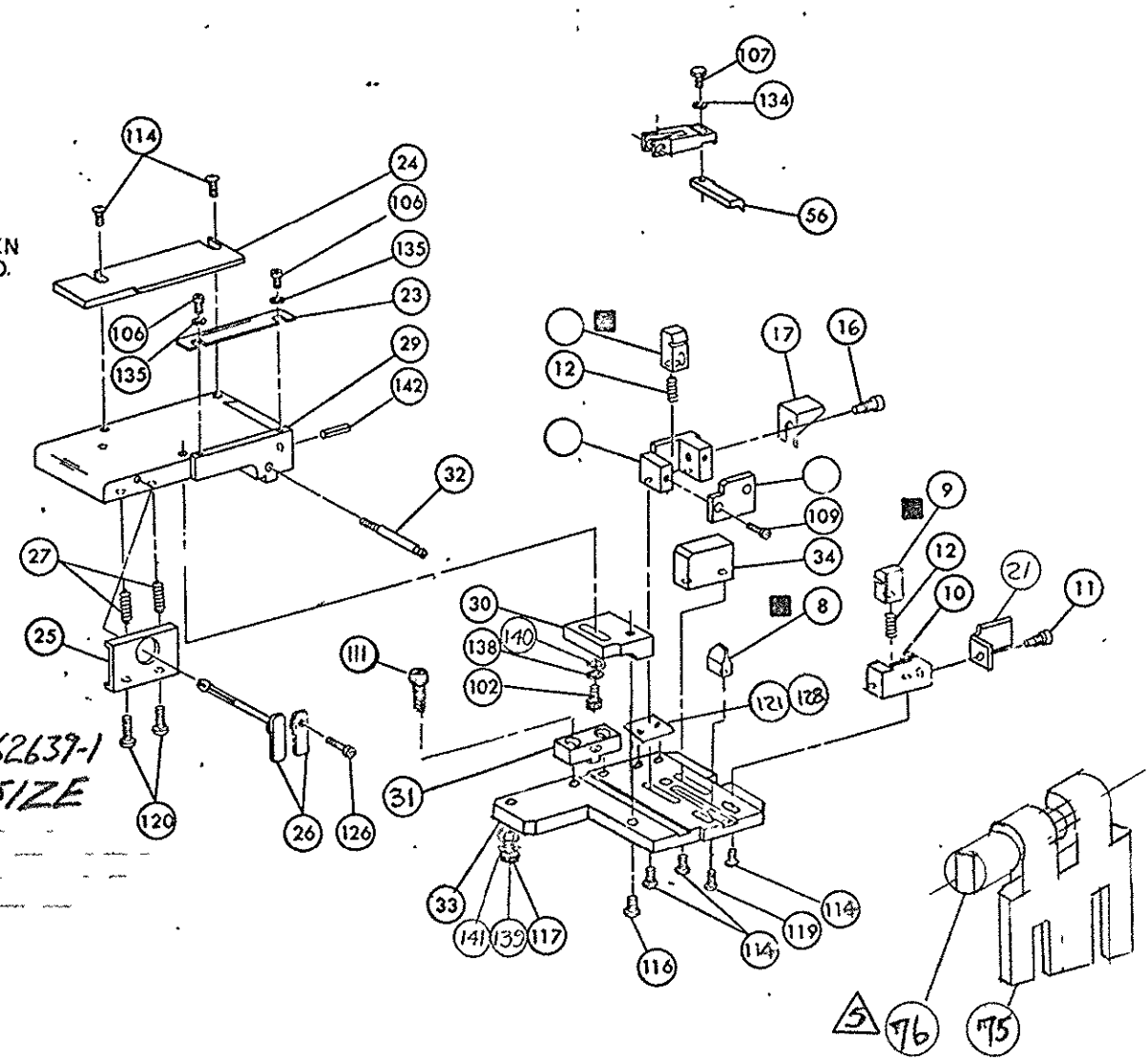
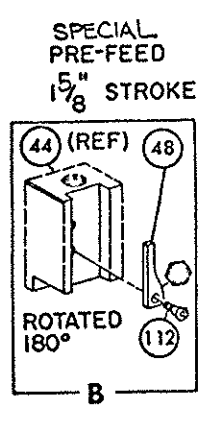
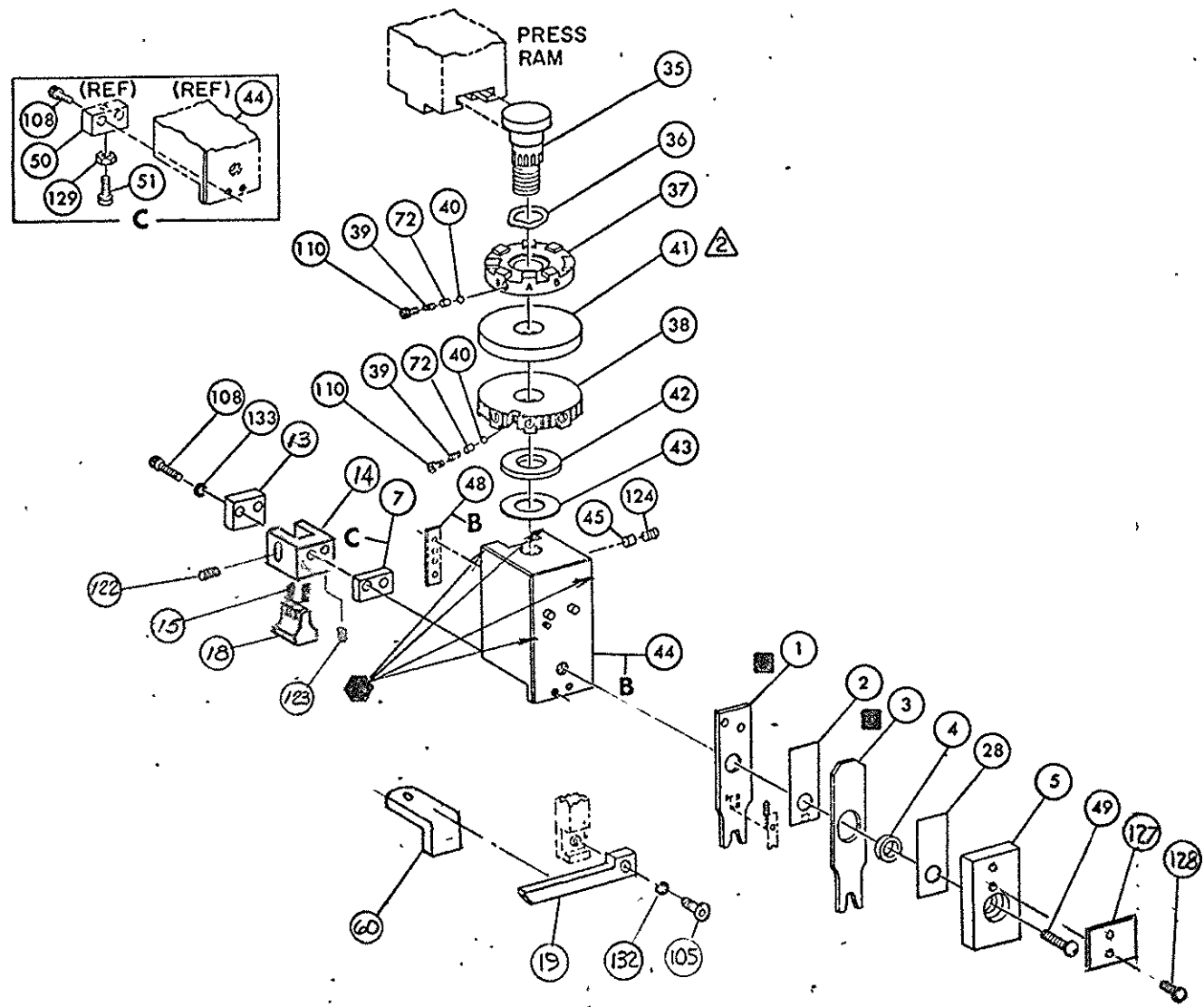


THIS IS A CONTROLLED DOCUMENT.

466920-1



**NOTES:**

1- ONLY THE ITEMS WITH QUANTITIES SPECIFIED ON PARTS LIST ARE USED ON THIS APPLICATOR.

⚠️ USED IN PLACE OF ITEM 38 WHEN INSULATION CRIMP IS NOT USED.

3- FEED PIVOT-CENTER HOLE

⚠️ PART NOT ON PRINT.

**KEY:**

■ - RECOMMENDED SPARE PARTS

⚠️ - GREASE WEEKLY

⚠️ REPLACE LEFT STRIPPER AIR CYL PIN 462639-1 FOR GREATER WIRE SIZE IF USED ON S.C. PN 463345-1 OR -2.

QTY	PART NO	DESCRIPTION	ITEM NO	QTY	PART NO	DESCRIPTION	ITEM NO
1	453615-1	PLATE, TERMINAL NO.	145				59
2	690701-2	PLATE, SERIAL NO.	144				58
1	4-21028-0	PIN, SLOT SPR (.093 DIA X .75) STR G PLATE	142	REF	694433-8	PAWL FEED	56
1	21899-2	WASHER, FLAT (NO 10) MOUNTING	141				55
1	21899-2	WASHER, FLAT (NO 10) S G ADJ BLOCK	140				54
1	21024-5	WASHER, LOCK (NO 10) MOUNTING	139				53
1	21024-5	WASHER, LOCK (NO 10) STRIP GUIDE ADJ BLOCK	138				52
			137				51
			136			BUMPER, HOLDDOWN	50
2	21024-2	WASHER, LOCK (NO 4) FRONT STRIP GUIDE	135	1	7-21002-9	BOLT, CRIMPER (BUT. HD. 5/16-24 UNF X 1.00)	49
REF	21024-4	WASHER, LOCK (NO 8) FEED FINGER	134	1	690602-6	CAM PRE FEED 1.62 STROKE	48
2	21024-4	WASHER, LOCK (NO 8) DEPRESSOR	133				47
REF	21024-4	WASHER, LOCK (NO 8) STRIPPER	132				46
			131	1	690191-1	PLUG, NYLON	45
			130	1	455673-1	RAM	44
			129	1	690125-1	WASHER, LAMINATED	43
4	21017-2	SCR, DRIVE (#2 X .188 LG.)	128	1	690124-9	WASHER, RAM	42
1	819347-1	PLATE, I.D.	127			DISC, SPACER	41
			126	2	23241-6	BALL, STEEL	40
			125	2	690170-1	SPRING, COMPRESSION	39
1	21009-2	SCR, SKT SET (1/4-20 X .25) (LOC-WEL) RAM	124	1	690122-1	DISC, INSULATION	38
1	2-21008-1	SCR, SKT SET (1/4-20 X .25) (LOC-WEL) HOLD DOWN	123	1	6-670692-3	DISC, WIRE	37
1	4-21028-0	PIN, SLOT SPR (.094 X .75)	122	1	22480-5	WASHER, SPRING	36
1	690701-2	PLATE, I.D.	121	1	690212-1	POST, RAM	35
2	3-21002-0	SCR, BUT HD SKT CAP (10-32 X .88) DRAG	120	1	692776-4	SUPPORT, TERMINAL	34
1	22733-8	SCR, BUT HD SKT CAP (8-32 X .38) (LOC-WEL) ANVIL	119	1	462544-1	PLATE, BASE SPECIAL	33
			118	1	690432-3	SCREW, ADJUSTMENT	32
1	3-21000-9	SCR, SOC HD SKT CAP (10-32 X 1.00) MOUNTING	117	1	462543-1	BLOCK, SCREVV SPECIAL	31
1	2-21002-7	SCR, BUT HD SKT CAP (10-32 X .50) SG ADJ BLOCK	116	1	455689-1	BLOCK, STRIP GUIDE ADJ	30
			115	1	455671-4	PLATE, STRIP GUIDE	29
6	2-21002-2	SCR, BUT HD SKT CAP (8-32 X .50) R STRIP GUIDE	114	1	1-455885-0	SPACER, FRONT SHEAR DEPRESSOR	28
1	1-21002-7	SCR, BUT HD SKT CAP (6-32 X .50) CAM	112	2	1-22284-0	SPRING, DRAG	27
2	2-21000-7	SCR, SKT HD CAP (8-32 X .50) SCR. BLOCK	111	1	690546-1	LEVER, DRAG RELEASE	26
2	23030-1	SCR, SKT HD CAP (6-32 X .25) (LOC-WEL) CP DISC	110	1	240792-5	DRAG, STOCK	25
			109	1	690504-6	GUIDE STRIP (REAR)	24
2	3-21000-0	SCR, SKT HD CAP (8-32 X .88) DEPRESSOR (REAR)	108	1	690438-1	GUIDE, STRIP (FRONT)	23
REF	2-21002-1	SCR, BUT HD MACH (8-32 X .38) FEED FINGER	107	1	463756-1	GUIDE, SCRAP	21
2	1-21000-3	SCR, SKT HD CAP (4-40 X .25) F STRIP GUIDE	106				20
REF	2-21002-1	SCR, BUT HD CAP (8-32 X .38) STRIPPER	105	REF	462615-1	STRIPPER	19
			104	1	459551-1	HOLDER, TERMINAL	18
			103			GUARD, CHIP (REAR)	17
1	3-22603-1	SCR, HEX HD CAP (10-32 X .38) SG ADJ BLOCK	102			STOP, SHEAR (REAR)	16
			101	2	3-22278-0	SPRING, HOLD DOWN	15
			79	1	455052-1	HOLDER, DEPRESSOR	14
			78	1	455053-1	PLATE, RETAINING	13
2	463310-4	BLADE, STRIPPING (M/B)	77	1	5-22280-0	SPRING, SHEAR	12
REF	684520-1	GRIPPER CYLINDER SUB ASSY.	76	1	690461-2	STOP, SHEAR (FRONT)	11
REF	813204-1	MOUNT STRIPPER	75	1	462548-1	HOLDER, SHEAR (FRONT) SPECIAL	10
			74	1	462547-1	SHEAR, FLOAT (FRONT) SPECIAL	9
			73	1	2-690471-9	ANVIL	8
1	690603-1	SPRING, ASSIST	72	1	4-240641-2	SPACER, HOLD DOWN	7
			71	1	462838-1	DEPRESSOR, SHEAR (REAR)	6
			70	1	462838-1	DEPRESSOR, SHEAR (FRONT) SPECIAL	5
			69	1	238011-7	SPACER, TUBULAR, INS CRIMPER	4
			68	1	456134-5	CRIMPER, INSULATION	3
			67	1	455888-5	SPACER, CRIMPER	2
			66	1	3-456406-3	CRIMPER, WIRE	1

QTY	PART NO	DESCRIPTION	ITEM NO	QTY	PART NO	DESCRIPTION	ITEM NO
REF	469484-1	STOP, WIRE	60				

REMARKS	NO	REV
APPL USED ON MACHINE PART NO	MACH SERIAL NO	DISTRIBUTION
CUSTOMER NAME	APPL SERIAL NO	ORIGINAL
ADDRESS	PURCHASE ORDER	CUSTOMER COPY
CITY	ENG APP	FIELD ENG COPY

CRIMPING DATA	APPLICATOR WILL APPLY				
PAD LTR	CRIMP HEIGHT	WIRE SIZE	WIRE STRIP LENGTH	PIN	SOCKET
A	.052	18		61118	61117
B	.047	20		350218	350217
C	NOT USED			350654	350656
D	.059	16		350687	
CRIMP SIZE	TYPE	FEED	APPL INST	926887	
WIRE .090	F	.430	A1	926883	
INSUL .130	F			926882	
WIRE RANGE 20-16	INSULATION RANGE	PRESS NO			
	.130 MAX.	463345-1			

14 AWG NOT RECOMMENDED

RELEASED FOR PUBLICATION 11 22 JUNE 2001  
 BY AMP INCORPORATED ALL RIGHTS RESERVED  
 COPYRIGHT 1999 2000  
 AMP 2093-3 (8-73)