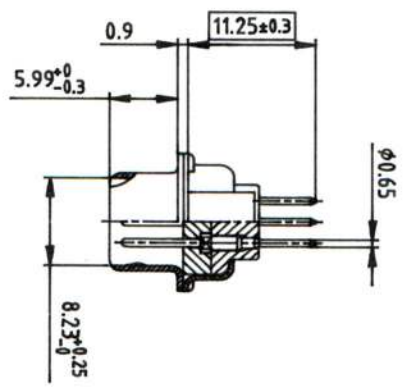
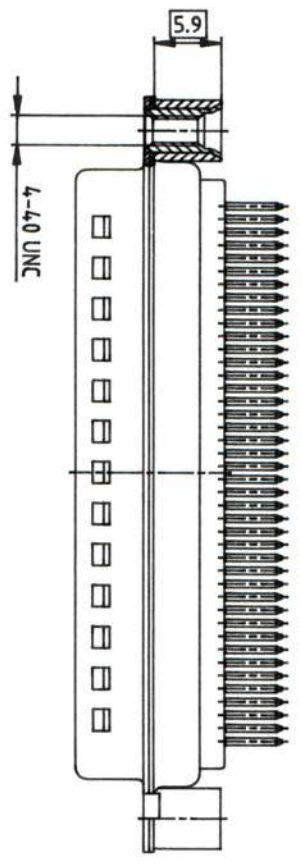
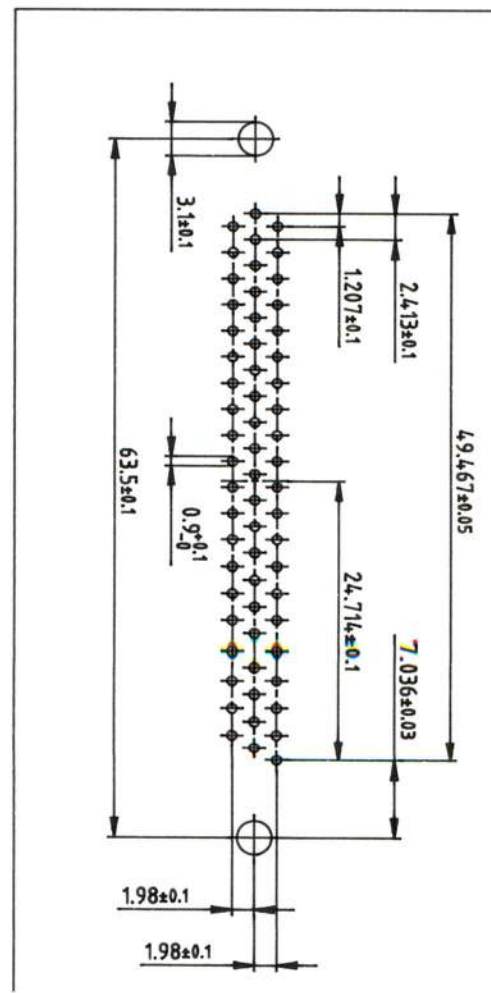
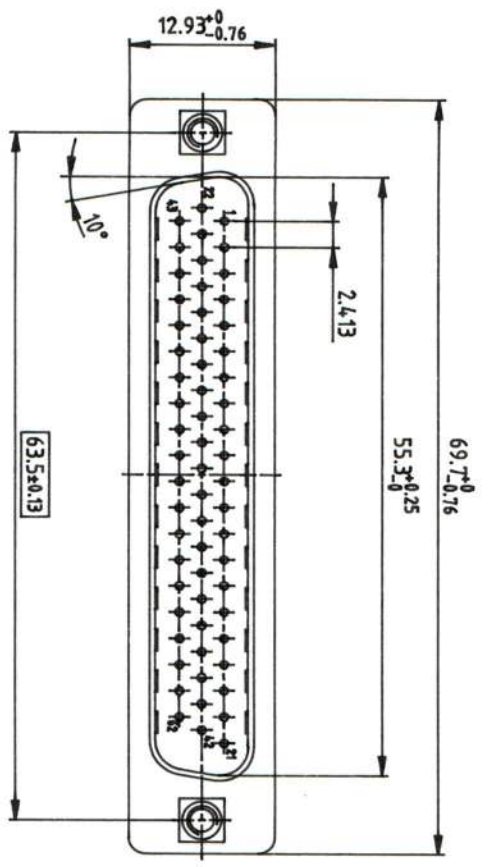


P.C.B. HOLE DRILLINGS

Used for: D-SUB 1



- NOTES:
1. METALSHELLS: STEEL; TIN PLATED
  2. INSULATORS: PBT GF; UL 94 V-0; BLACK
  3. CONTACTS: COPPER ALLOY
  4. PLATING: min. 8µ" HARD GOLD OVER min. 50µ" COPPER
  5. MAXIMUM TORQUE VALUE FOR THREAD: 6" L
  6. [ ] = CRITICAL DIMENSION: SPC

THIS DRAWING MAY NOT BE COPIED OR REPRODUCED IN ANY WAY, AND MAY NOT BE PASSED ON TO A THIRD PARTY WITHOUT WRITTEN PERMISSION. OWNERSHIP AND COPYRIGHT OF CONEC GmbH DO NOT ALTER CAD DRAWING BY HAND

rev.	description	date	name

CONEC CORPORATION BRAMPTON, ONTARIO		tolerance	2:1
1999	date	name	SEE NOTES
05.18	drawn	Bardhal	
05.10	synd.	Mickelbacher	
4-nd	name		
title:		D-SUB HD MALE	
material:		SOLDER PIN STRAIGHT 6Zn	
dwg no:		WITH THREADED REAR SPA	
product no:		16K11KRA	
163A040697		CAD/ REL.	

