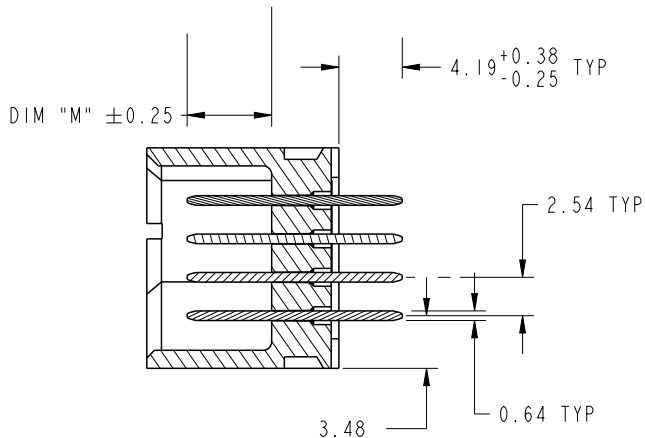


| CODE | DIM "M" MATING LENGTH | CONTACT TYPE |
|------|-----------------------|--------------|
| J | [5.59] | SIGNAL |
| F | [6.86] | SIGNAL |

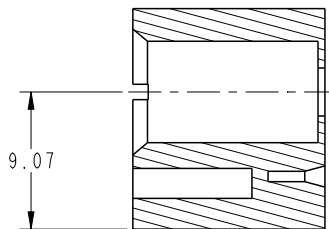
| | | | | | | | | | | | | |
|---------------|---------------------------------------|-------|-------|--------------------|------------------------|-----------------------------|----------------|--------------|-----------|-----------|-------|-----|
| spec ref | See Notes | | | dr | Sky Chen | 2012/12/10 | projection | MM ←→ | size | A4 | scale | 1:1 |
| tolerance std | TOLERANCES UNLESS OTHERWISE SPECIFIED | | | eng | Sky Chen | 2012/12/20 | | | ecn no | - | | |
| See Notes | | | | chr | - | - | | | rel level | Released | | |
| surface | linear | 0.X | ±0.50 | FCI www.fci.com | title | 124S VERTICAL STB HEADER | product family | PwrBlade | dwg no | 51952-236 | rev | A |
| | | 0.XX | ±0.25 | | | | | | | | | |
| | | 0.XXX | ±0.10 | | | | | | | | | |
| | angular | 0° | ±2° | cat. no. | Product - Customer Drw | | | sheet 1 of 4 | | | | |

PRODUCT NUMBER

51952-236--
NOTE 3



SECTION A-A
SCALE 2:1



SECTION C-C
SCALE 2:1

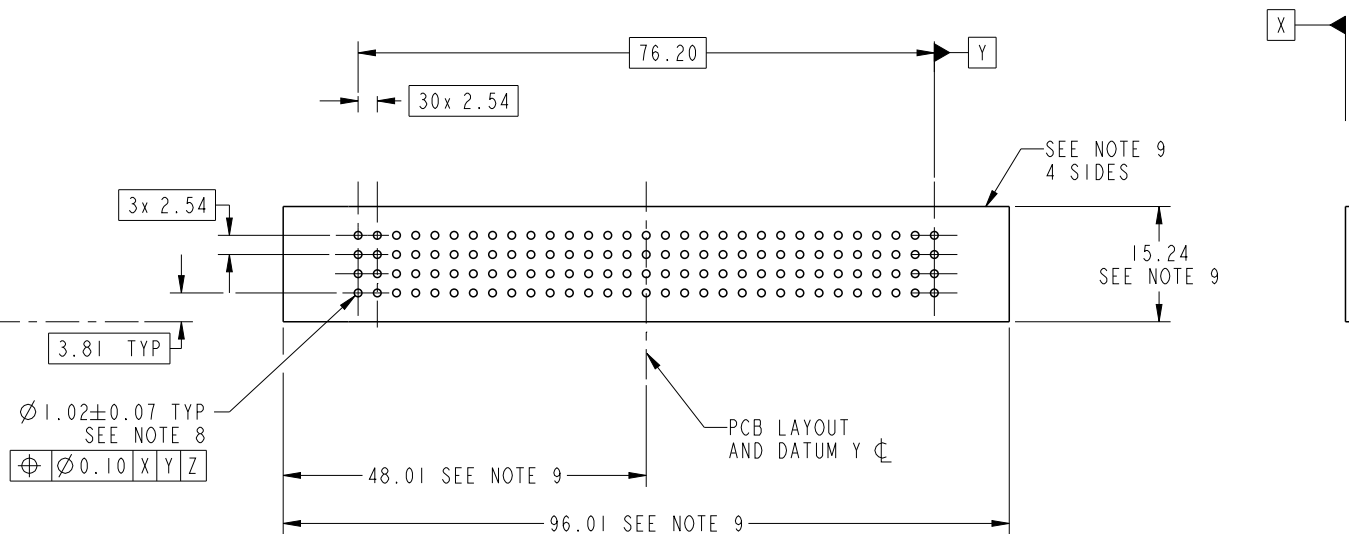
| | | | | | | | | |
|-------------|----------------|-----------------------------|----------------|----------|--------------|----------|-------|-----|
| dr | Sky Chen | 2012/12/10 | projection | MM ←→ | size | A4 | scale | 1:1 |
| eng | Sky Chen | 2012/12/20 | | | ecn no | - | | |
| chr | - | - | | | | | | |
| appr | Pei-Ming Zheng | 2012/12/20 | product family | PwrBlade | rel level | Released | | |
| | title | 124S VERTICAL STB HEADER | | dwg no | 51952-236 | | rev | A |
| www.fci.com | cat. no. | Product - Customer Drw | | | sheet 2 of 4 | | | |



Copyright FCI.

PRODUCT NUMBER

51952-236--
NOTE 3



RECOMMENDED PCB LAYOUT

| | | | | | | | | |
|-------------|----------------|-----------------------------|----------------|----------|--------------|----------|-------|-----|
| dr | Sky Chen | 2012/12/10 | projection | MM | size | A4 | scale | 1:1 |
| eng | Sky Chen | 2012/12/20 | | | ecn no | - | | |
| chr | - | - | | | | | | |
| appr | Pei-Ming Zheng | 2012/12/20 | product family | PwrBlade | rel level | Released | | |
| | title | 124S VERTICAL STB HEADER | | dwg no | 51952-236 | | rev | A |
| www.fci.com | cat. no. | Product - Customer Drw | | | sheet 3 of 4 | | | |

PRODUCT NUMBER

51952-236__
NOTE 3

NOTES:

1. DIMENSIONS AND TOLERANCES ARE IN ACCORDANCE WITH ASME Y14.5M, 1994 UNLESS OTHERWISE SPECIFIED.

CONNECTOR NOTES:

- ② HOUSING MATERIAL: UL 94 V-0 GLASS FILLED HIGH-TEMP THERMOPLASTIC
SIGNAL PIN MATERIAL: COPPER ALLOY
- 3. SEE ITEM 1 & 2 IN PRINT 10064183 FOR PLATING SPEC OF 51952-236 AND 51952-236LF RESPECTIVELY.

④ MANUFACTURER'S NAME, DATE CODE AND OPTIONAL P/N TO APPEAR ON THIS SURFACE. THE MARK CAN BE OMITTED IF THERE IS NOT ENOUGH SPACE ON THIS SURFACE.

5. PRODUCT SPECIFICATION GS-12-149.
APPLICATION SPECIFICATION BUS-20-067.

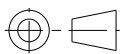
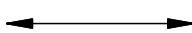

6. PACKAGED IN TRAYS.

PCB NOTES:

7. ALL HOLE DIAMETERS ARE FINISHED HOLE SIZE.

8. $\varnothing 1.151 \pm 0.025$ DRILLED HOLES PLATED WITH 0.008 MIN SnPb OR Sn OVER .001 [0.03] TO 0.08 Cu PLATING TO ACHIEVE $\varnothing 1.02 \pm 0.07$ HOLE.

9. CONNECTOR KEEP-OUT ZONE.

| | | | | | | | | |
|-------------|----------------|------------|---|---|--------------------------------------|---------------------|-----------|----------|
| dr | Sky Chen | 2012/12/10 | projection  | MM  | size | A4 | scale | 1:1 |
| eng | Sky Chen | 2012/12/20 | | | ecn no | - | | |
| chr | - | - | | | product family | PwrBlade | rel level | Released |
| appr | Pei-Ming Zheng | 2012/12/20 |  | | title 124S VERTICAL STB HEADER | dwg no 51952-236 | rev A | |
| www.fci.com | | cat. no. | Product - Customer Drw | | | sheet 4 of 4 | | |



Copyright FCI.