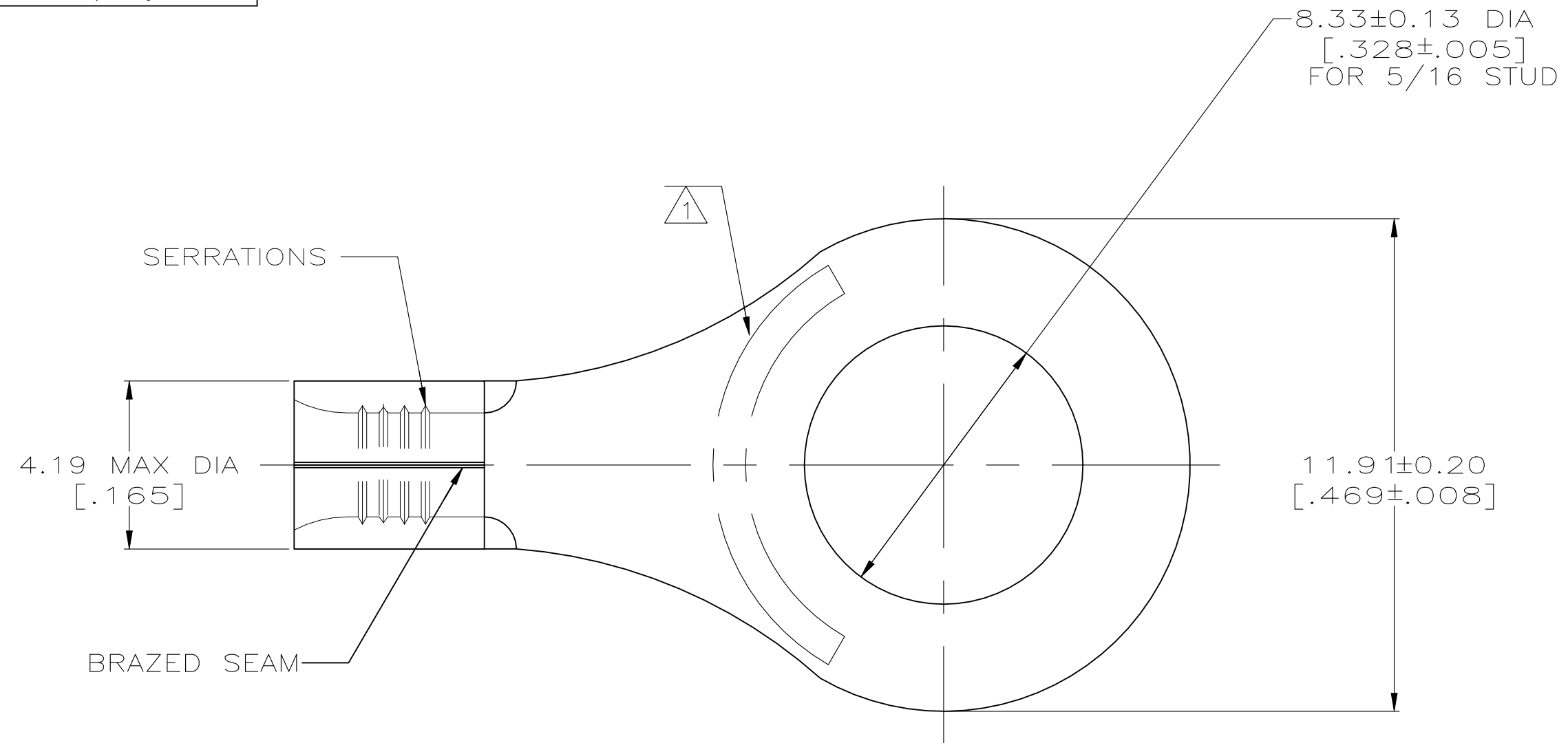


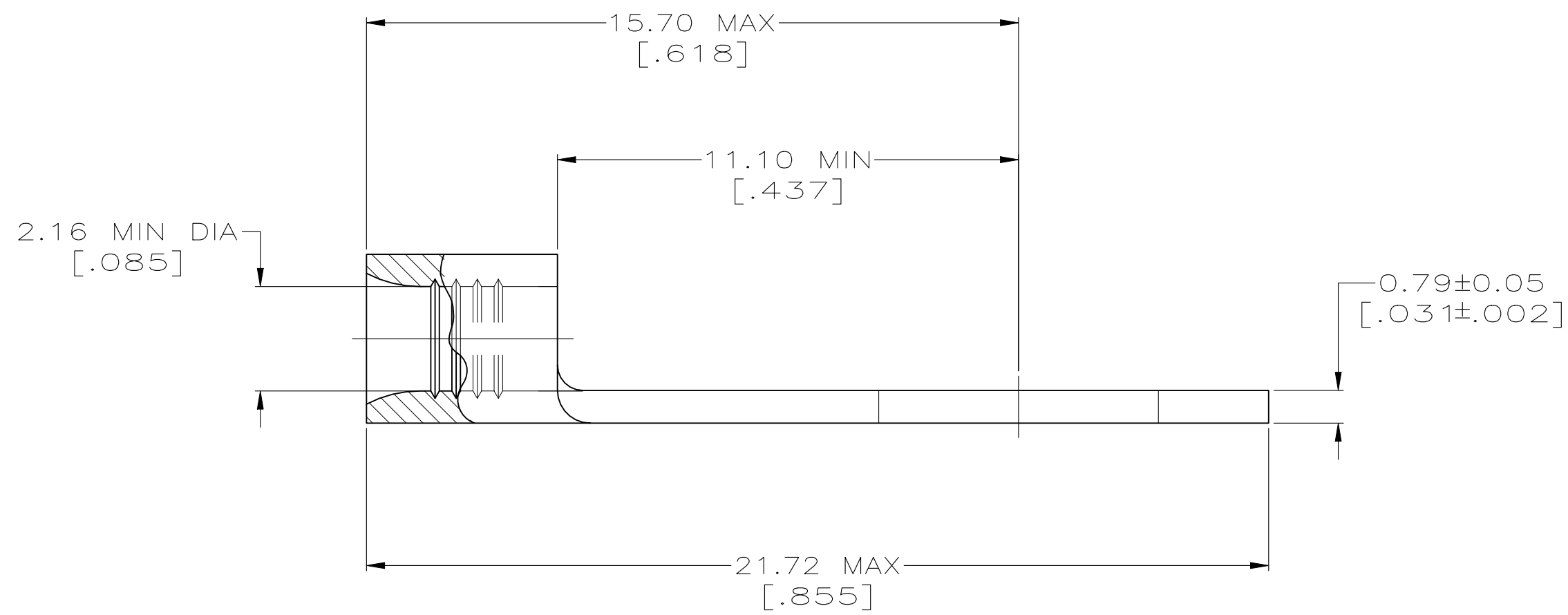
| REVISIONS |     |                           |           |        |
|-----------|-----|---------------------------|-----------|--------|
| P         | LTR | DESCRIPTION               | DATE      | APVD   |
|           | H1  | REVISED PER ECN-22-150900 | 28APR2022 | RK CSD |



|                                |                                |
|--------------------------------|--------------------------------|
| <b>AMP</b><br>WIRE RANGE       | E13288<br>Listed               |
| 16-14 AWG<br>SOLID OR STRANDED | 16-14 AWG<br>SOLID OR STRANDED |

|                                |
|--------------------------------|
| LR7189<br>Certified            |
| 16-14 AWG<br>SOLID OR STRANDED |

1 STAMP AMP 16-14\* APPROX AS SHOWN  
2 NOTE DELETED



| QUANTITY | PACKAGING TYPE           | AMP PART NUMBER |
|----------|--------------------------|-----------------|
| 100      | ON TAPE, REEL            | 8-34125-5       |
| 100      | LOOSE PIECE              | 8-34125-1       |
| 5000     | LOOSE PIECE, SPECIAL BOX | 3-34125-2       |
| 1000     | LOOSE PIECE, BOX         | 3-34125-1       |
| 5000     | ON TAPE, REEL            | 2-34125-6       |
| 1000     | LOOSE PIECE              | 34125           |

|  |  |   |
|--|--|---|
| <b>AMP INCORPORATED<br/>CUSTOMER SERVICE SYSTEMS</b>                             |  | MAX RECOMMENDED OPERATING TEMPERATURE:<br>170° C [338°F] MAX  |
| FOR ADDITIONAL PRODUCT INFORMATION OR COPIES OF DRAWINGS AND TECHNICAL DOCUMENTS | PRODUCT INFORMATION CENTER<br>1-800-522-6752 | VOLTAGE RATING:<br>NOT APPLICABLE   |
| FOR APPLICATION TOOLING INFORMATION  | TOOLING ASSISTANCE CENTER<br>1-800-722-1111  | WIRE CROSS SECTIONAL AREA RANGE:<br>1.04-2.62mm <sup>2</sup> [2,050-5,180] CIR MILS<br>SOLID OR STRANDED  |
| FOR ORDER ENTRY  | 1-800-526-5142                               | THIS DRAWING IS A CONTROLLED DOCUMENT FOR AMP INCORPORATED. IT IS SUBJECT TO CHANGE AND THE CONTROLLING ENGINEERING ORGANIZATION SHOULD BE CONTACTED FOR THE LATEST REVISION. |

|   |  |                                |                              |                    |
|---|--|--------------------------------|------------------------------|--------------------|
| THIS DRAWING IS A CONTROLLED DOCUMENT.  |  | DWN<br>TA BRINKMAN<br>3-17-93  | TE Connectivity              |                    |
| DIMENSIONS:<br>mm[INCHES]   |  | CHK<br>DA PATTERSON<br>3-17-93 | NAME<br>DE MILLER<br>3-17-93 |                    |
| TOLERANCES UNLESS OTHERWISE SPECIFIED:<br>0 PLC ± -<br>1 PLC ± -<br>2 PLC ± -<br>3 PLC ± -<br>4 PLC ± -<br>ANGLES ± - |  | APVD<br>DE MILLER<br>3-17-93   | PRODUCT SPEC<br>UL486 A-B    |                    |
| MATERIAL<br>COPPER PER ASTM B-152<br>ANNEALED   | FINISH<br>TIN PLATE<br>0.00254[.000100] MIN THK PER ASTM B-545 | APPLICATION SPEC<br>-          | SIZE<br>A2                   | CAGE CODE<br>00779 |
| CUSTOMER DRAWING  |  | DRAWING NO<br>C-34125          | RESTRICTED TO<br>-           | SCALE<br>8:1       |
|   |  | SHEET<br>1 OF 1                | REV<br>H1                    |                    |