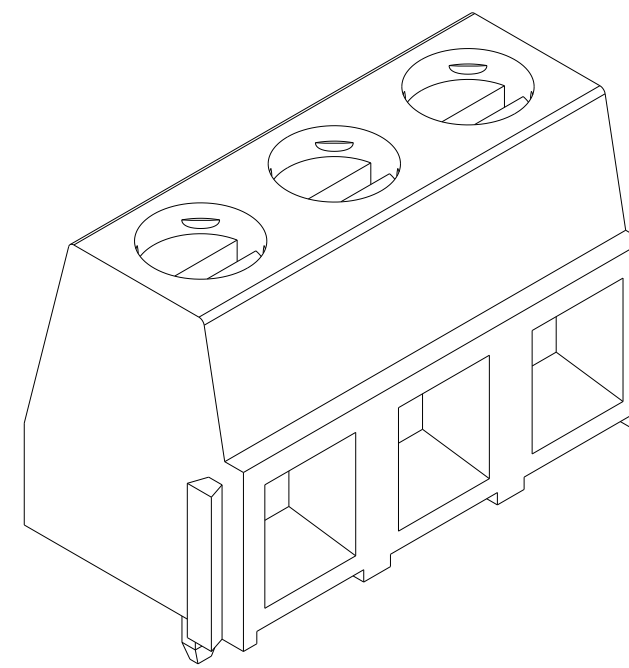
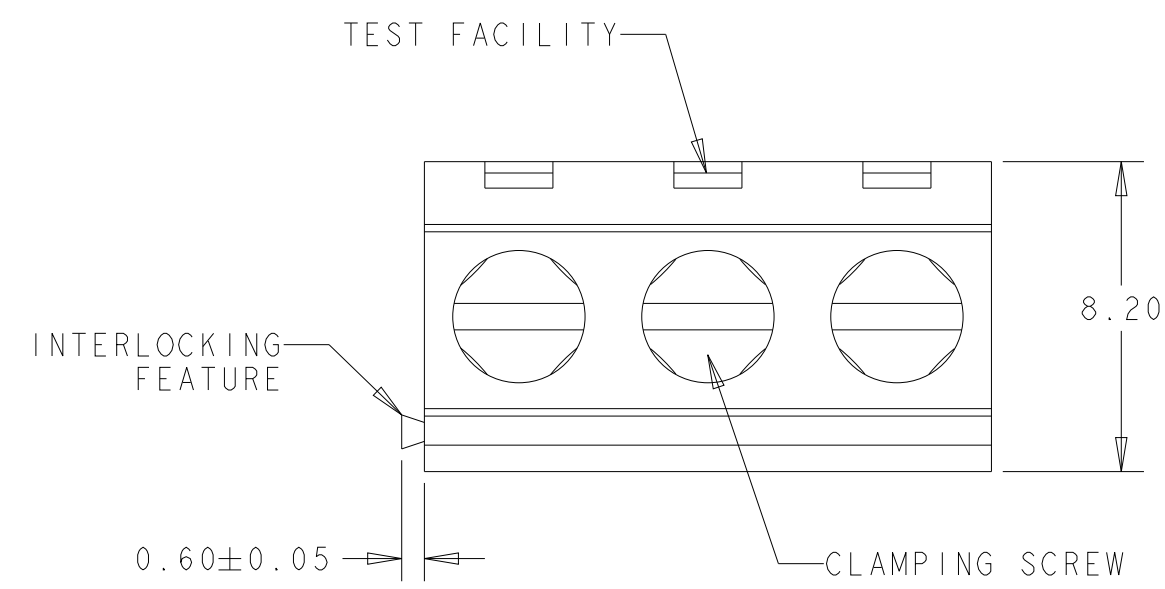
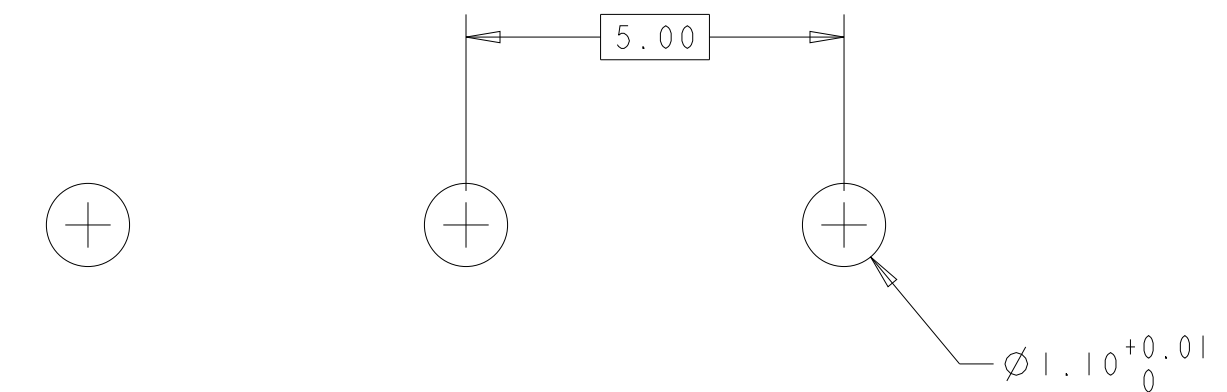
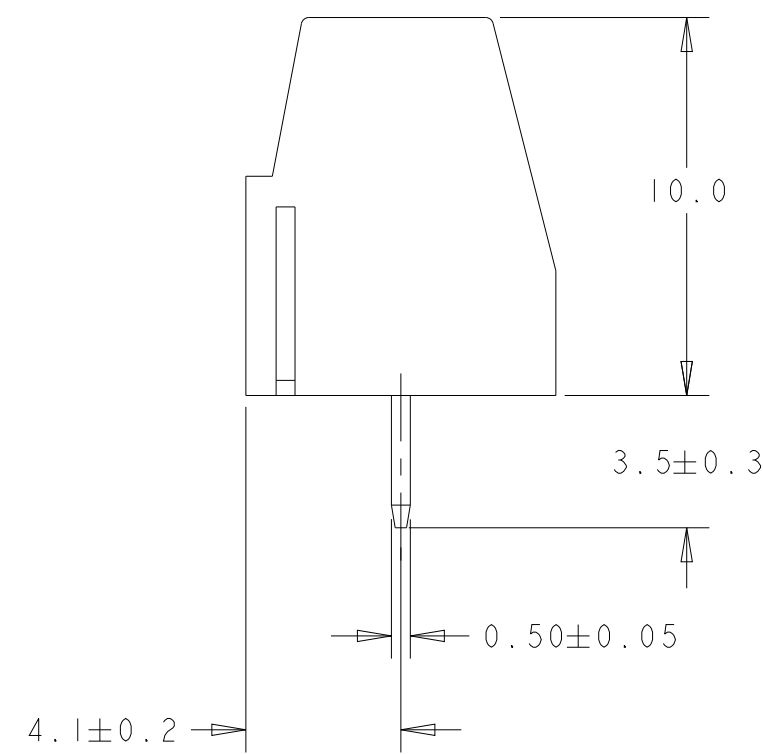
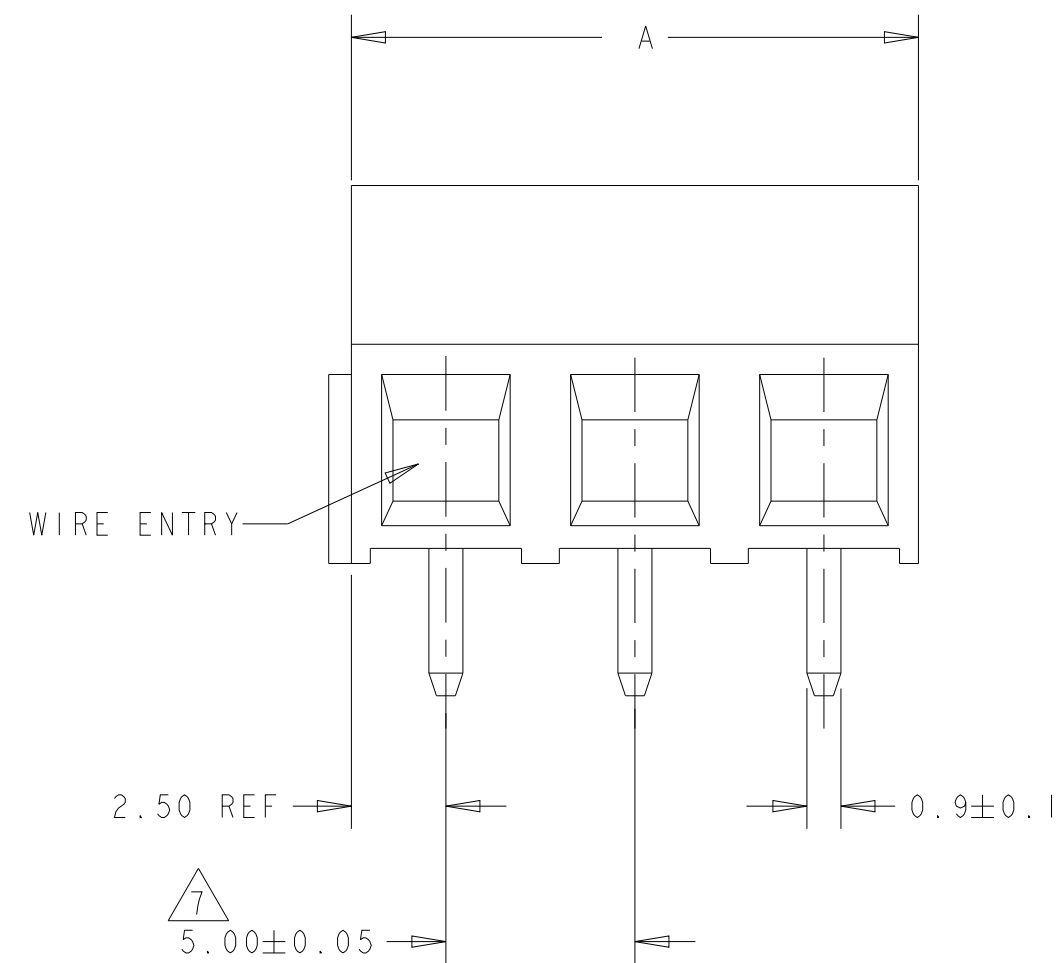


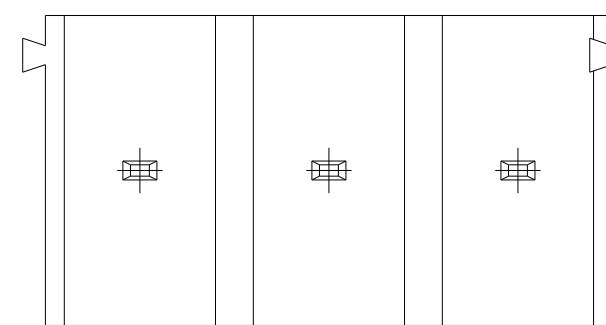
| REVISIONS | | | | | |
|-----------|-----|---------------------------|-----------|-----|------|
| P | LTR | DESCRIPTION | DATE | DWN | APVD |
| A1 | | REVISED PER ECO-10-024403 | 01DEC2010 | HMR | CR |
| A2 | | 1986663-3 MADE OBSOLETE | 27DEC2021 | SCB | PS |
| | | | | | |
| | | | | | |



- 1. MATERIAL AND FINISH
HOUSING: PA 6-6, U; 94V-0 RATED, COLOR: BLACK.
CLAMP: BRASS, NICKEL PLATED.
TERMINAL: BRASS, TIN PLATED.
CLAMPING SCREW: M3, BRASS, NICKEL PLATED.
 - 2. SUITABLE FOR 1.6-2.4mm PC BOARD THICKNESS.
 - 3. END-TO-END STACKABLE W/INTERLOCK WITHOUT LOSS OF CENTERLINE SPACING.
 - 4. WIRE SIZE RANGE: 16-30 AWG
 - 5. RECOGNIZED UNDER THE COMPONENT PROGRAM OF UNDERWRITERS LABORATORIES INC. FILE No E60677.
 - 6. IMO CERTIFICATE WITH SURVEILLANCE IN CONFORMITY WITH IEC 998-1/998-1-1.
7. NOT CUMULATIVE TOLERANCE.



RECOMMENDED PC BOARD LAYOUT



| | | | |
|----------|---------------|--------------|----------------------|
| | 30 | 6 | 1986663-6 |
| OBSOLETE | 15 | 3 | 1986663-3 |
| | A | NO OF POSN | PART NUMBER |

| | | | | |
|--|--|---------------------------|---------------------------------|--|
| THIS DRAWING IS A CONTROLLED DOCUMENT. | | DWN RAGHAVENDRA 11NOV2010 | STE TE Connectivity | |
| DIMENSIONS: mm | | CHK C. RICHARD 11NOV2010 | | |
| TOLERANCES UNLESS OTHERWISE SPECIFIED: | | APVD C. RICHARD 11NOV2010 | NAME TERMI-BLOK PCB MOUNT 90 3P | |
| 0 PLC ± | | PRODUCT SPEC | - | |
| 1 PLC ±0.2 | | APPLICATION SPEC | - | |
| 2 PLC ±0.15 | | WEIGHT | - | |
| 3 PLC ±0.000 | | CUSTOMER DRAWING | SCALE 10:1 SHEET 1 OF 1 REV A2 | |
| 4 PLC ±0.000 | | | | |
| ANGLES ±2° | | | | |
| FINISH | | | | |
| MATERIAL | | | | |