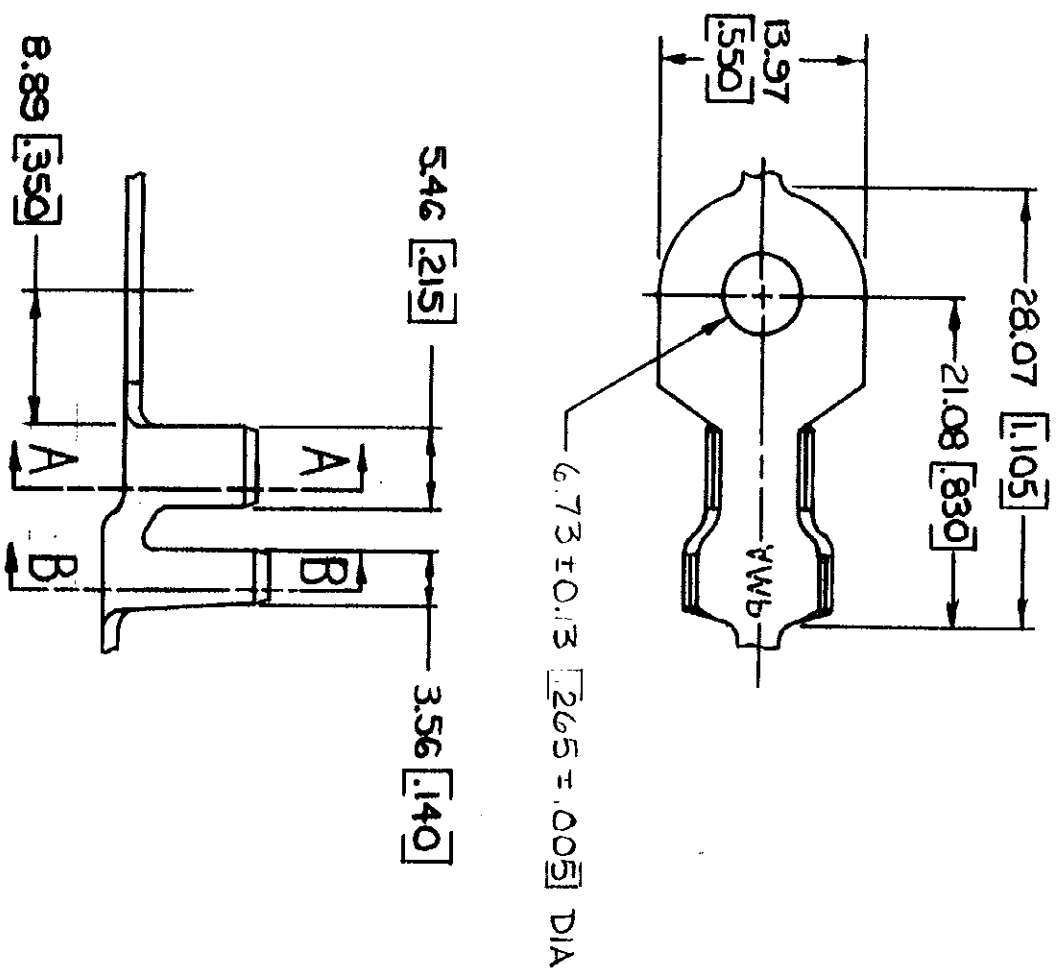


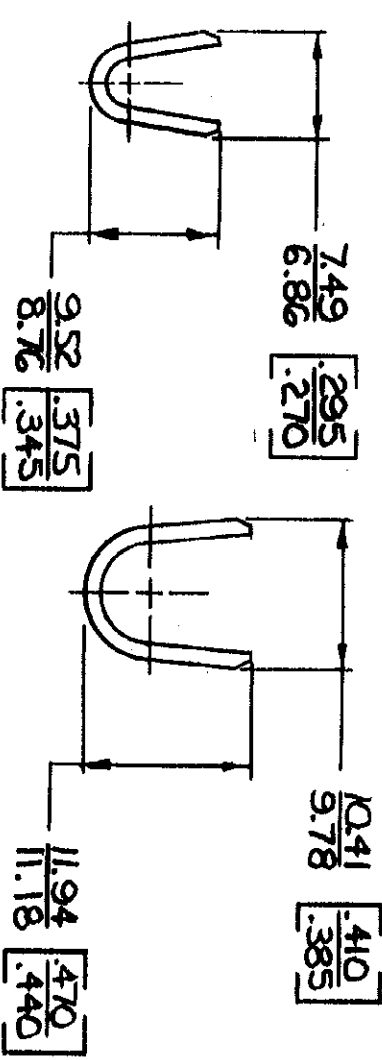
© COPYRIGHT 1964 BY AMP INCORPORATED, HARRISBURG, PA.
 ALL INTERNATIONAL RIGHTS RESERVED. AMP INCORPORATED PRODUCTS
 COVERED BY U. S. AND FOREIGN PATENTS AND/OR PATENTS PENDING.



- 1. CONTINUOUS STRIP ON REELS.
- 2. DIMENSIONS IN BRACKETS ARE IN INCHES.

METRIC

REVISIONS		1	Loc	AF	DIST	50
P	F	ZONE	LTR	DESCRIPTION	DATE	APPROVED
			J	REDRAWN & REVISED	A-3943	4/21/78
						55



STUD SIZE	INSULATION RANGE	WIRE RANGE	FINISH	MATERIAL	PART NO
M ₆ 4	5.59 - 8.00 [.220 - .315]	5.0 - 8.5 mm ² [10 - 8]	TIN	1.27 [050] COPPER	41809

UNLESS OTHERWISE SPECIFIED DIMENSIONS ARE IN MILLIMETERS TOLERANCES ON DECIMALS TO .05 [0.15] ANGLES 90°		CONTRACT NO	NAME
DIR David D. Wood 4/21/78	CHK J. J. [Signature]	APPR P. F. [Signature]	AMP INCORPORATED Harrisburg, Pa.
MATERIAL	SEE TABLE	DSGN APPD	SIZE
FINISH	SEE TABLE	OTHER APPD	CODE IDENT NO
			DRAWING NO
			41809
			SHEET

CUSTOMER DRAWING