

THIS DRAWING IS UNPUBLISHED.

RELEASED FOR PUBLICATION

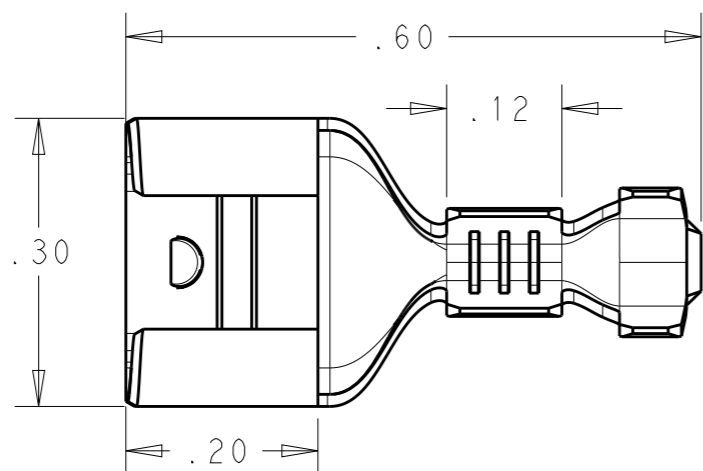
20

© COPYRIGHT 20 BY -

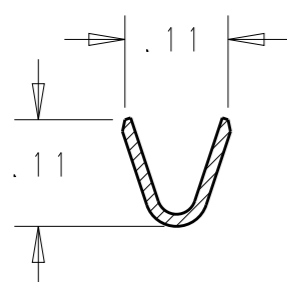
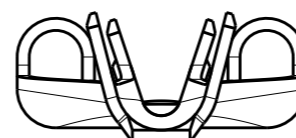
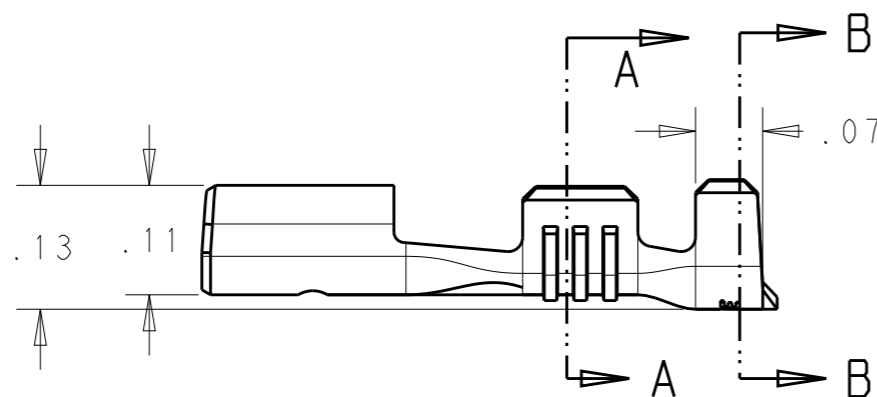
ALL RIGHTS RESERVED.

REVISIONS

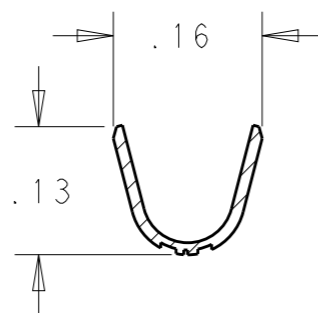
P	LTR	DESCRIPTION	DATE	DWN	APVD
A		FIRST INITIAL	29JUN2016	HG	TD



- 1: APPLICABLE WIRE RANGE: 22-18AWG
- 2: APPLICABLE INSULATION RANGE: DIAMETER 0.094~0.110
- 3: COUNTERPART: STANDARD 250 TAB WITH HOLE STRUCTURE
- 4: RAW MATERIAL STOCK THICKNESS: 0.0126 INCH
- 5: RECOMMENDED MATING TAB THICKNESS: 0.032 INCH




SECTION A-A



SECTION B-B

TIN-PLATED	BRASS	2238045-2
N/A	BRASS	2238045-3
FINISH	MATERIAL	PART NO.

THIS DRAWING IS A CONTROLLED DOCUMENT.		DWN Hogan Guo 29JUN2016	 TE Connectivity	
DIMENSIONS: INCH		CHK Tim Ding 29JUN2016		
TOLERANCES UNLESS OTHERWISE SPECIFIED:		APVD Tim Ding 29JUN2016		
0 PLC ±- 1 PLC ±.1 2 PLC ±.01 3 PLC ±.005 4 PLC ±.0005 ANGLES ±-		PRODUCT SPEC 108-106216		
MATERIAL BRASS		FINISH -	NAME RECEPTACLE, FASTON, .250 SERIES	
SEE TABLE		APPLICATION SPEC 114-106216	SIZE A3	CAGE CODE -
		WEIGHT 0.67 GR	DRAWING NO C=2238045	RESTRICTED TO -
		CUSTOMER DRAWING	SCALE 5:1	SHEET 1 OF 1
				REV A