



980 Series Ø 0.500" (12.7mm) Snap Mount Panel Mount Indicator Lights



980 Series non-relampable snap mount indicator lights feature molded plastic flex arms which ensure easy front panel installation into a 1/2" diameter hole.

Approval

REACH/RoHS/cURus

Specifications

Housing: White nylon (standard), black optional, other color available to special order.

Bezel: Sulfamate Nickel or Black Anodized standard. Clear anodized or gold iridite finish available to special order. Bezels are required on lens styles Type 94 (Flat Square) or Type 99 (Short Square). Bezels are optional on all other lens types.

Terminations: Wire leads: Black, # 18 gauge, PVC plastic insulated. UL-CSA rated at 105°C. 6" +/- 1/2" long, 1/2" stripped.

Terminals: Brass, Tin-plated. 3/16" quick-connect.

Incandescent AC or DC voltage options: 6 to 28 volts. High brightness Neon AC Voltage options: 125 to 250 volts. Blue or Green Neon AC or DC Voltage options: 125 to 250 volts.

Lens: Heat resistant, high strength polycarbonate.

Lens Marking: Flat lenses can be marked. Contact Technical Sales team or Customer Service.

Mounting: Designed to snap securely into a .500"/.510" diameter hole. Panel thickness ranges from .040" to .100".

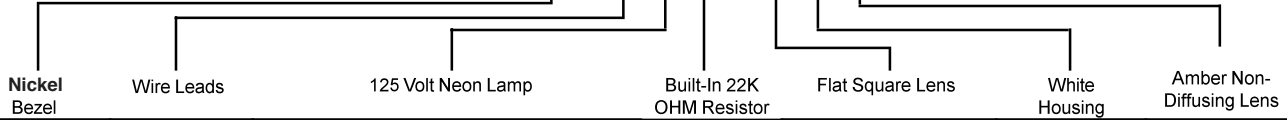
Compliances and Approvals



Ordering Data

ORDERING INFORMATION:

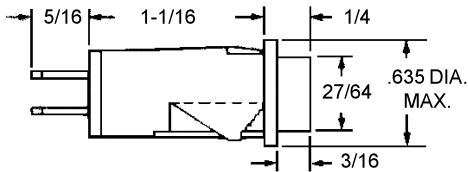
EXAMPLE: **981 6 70 A 94 W AN**



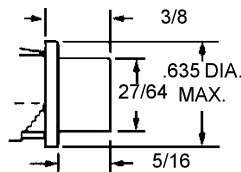
Series Number	Termination	Lamp (Incandescent)				Resistor	Lens Type	Housing Color	Lens Color			
		Code	Volts	MA	Life (Hrs)							
980 No Bezel	6 6" Wire Leads	03	14.0	80	15,000	X None (No Resistor required with incandescent lamps)	94⁵ Flat Square (Fresnel)	W White (Standard)	Nondiffusing (Clear)			
981 Nickel Bezel	7 .187" Q.C. Terminals	04	28.0	40	7,000				95 Flat Cylindrical (Fresnel)	B Black (Optional)	AN Amber	
982 Black Anodized Bezel		NEON (High Brightness)				A 22K OHM T 150K OHM B 47K OHM E 100K OHM B 30K OHM E 100K OHM	96 Short Cylindrical (Fresnel)	97 Long Cylindrical (Fresnel)	GN Green			
		70²	125	1/3 W	10,000				97 Long Cylindrical (Fresnel)		98 Long Stovepipe (Fresnel)	RN Red
		71²	250	1/3 W	10,000				98 Long Stovepipe (Fresnel)			WN White (Cloudy)
		56³	125	1/3 W	10,000				99⁵ Short Square (Fresnel)			YN Yellow
		56³	250	1/3 W	10,000							
57⁴	125	1/3 W	10,000									
		57⁴	250	1/3 W	10,000							

² Standard Neon. Use with lens colors AN, CN, RN, WN, or YN.
³ Green Neon. Use with lens colors CN, GN, or WN.
⁴ Blue Neon. Use with lens colors BN, CN, or WN.
⁵ Bezel Required.

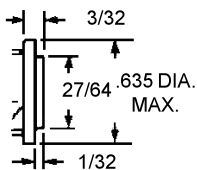
Product Dimensions



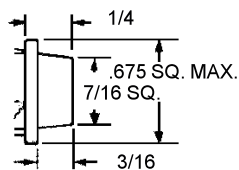
TYPE 96
SHORT CYLINDRICAL LENS



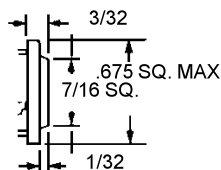
TYPE 97
LONG CYLINDRICAL LENS



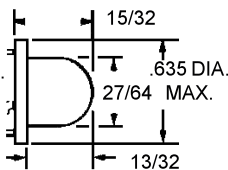
TYPE 95
FLAT CYLINDRICAL LENS



TYPE 99
SHORT SQUARE LENS



TYPE 94
FLAT SQUARE LENS



TYPE 98
LONG STOVEPIPE LENS