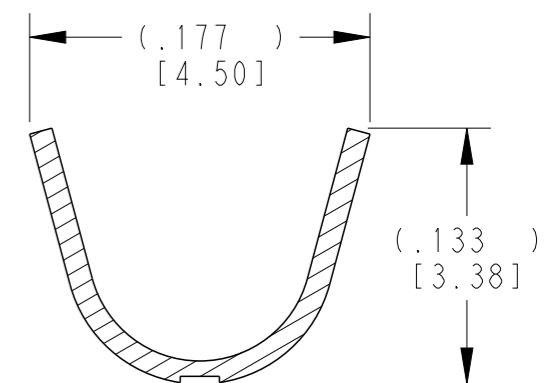
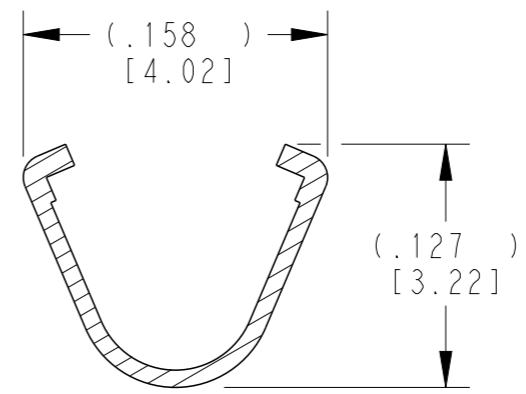
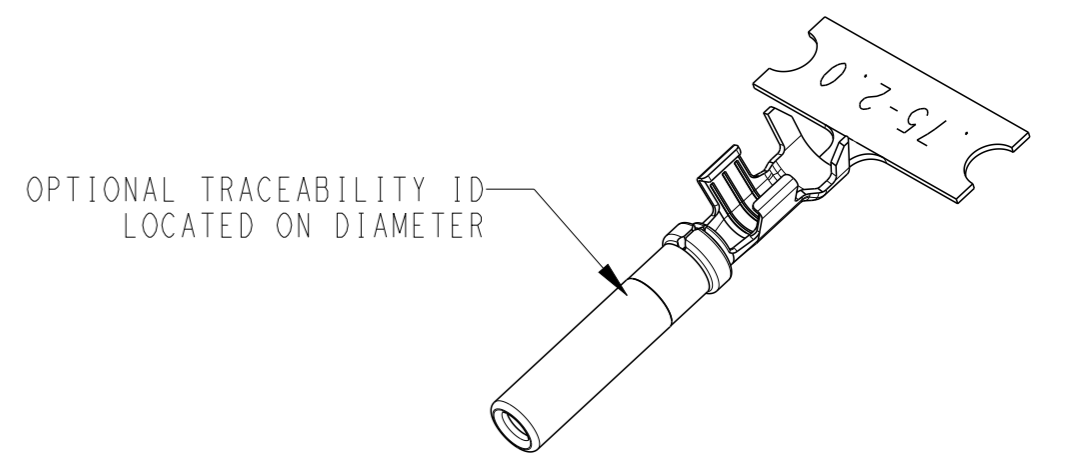
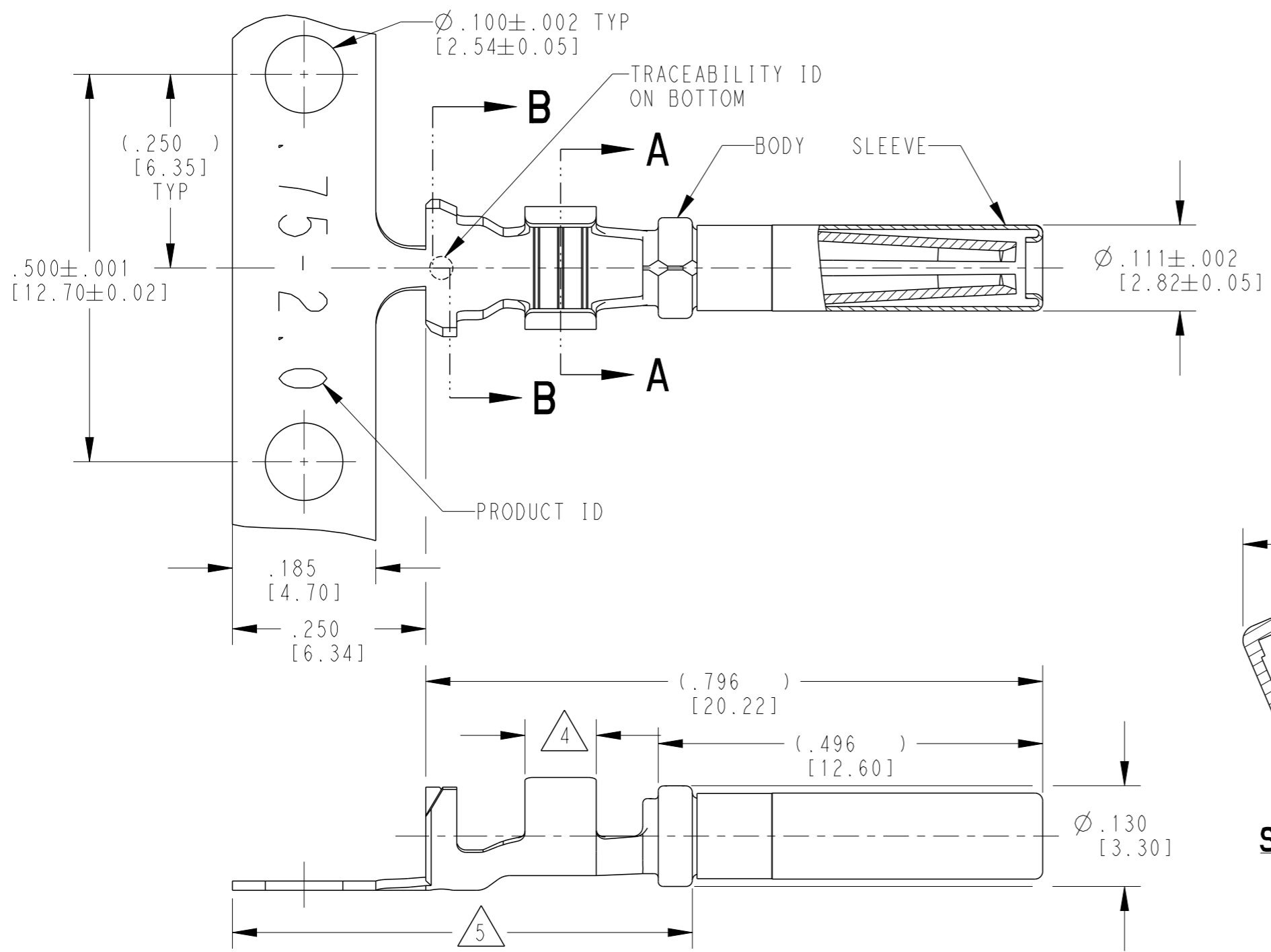


THIS DRAWING IS UNPUBLISHED
 RELEASED FOR PUBLICATION 2020
 © COPYRIGHT 2020 BY TE CONNECTIVITY ALL RIGHTS RESERVED.

| REVISIONS | | | | | |
|-----------|-----|-----------------------------|-----------|-----|------|
| P | LTR | DESCRIPTION | DATE | DWN | APVD |
| | F | REVISED PER ECO-15-007761 | 28MAY2015 | RL | DM |
| | G | REVISED PER PCN E-20-008101 | 12JUN2020 | DM | DM |
| | G1 | REVISED PER PCN-22-157823 | 12OCT2022 | SP | DM |



5 TIN PLATING MAY BE IN THIS REGION.

4 TIN PLATED REGION.

3 MATERIAL:
 BODY: .012 [0.30] THICK COPPER ALLOY
 SLEEVE: STAINLESS STEEL

2. WIRE RANGE: 18 AWG TO 14 AWG [0.75-2.0 mm²]
 INSULATION RANGE: Ø.075-.140 [Ø1.91-3.56]

1 DELETED.

NOTES: UNLESS OTHERWISE SPECIFIED

| TE INTERNAL PN | DEUTSCH PN | PLATING |
|-------------------------|-------------------------|--|
| 1062-16-0722 | 1062-16-0722 | Ni/Cu overall, Sn/Ni/Cu Wire Barrel |
| 1062-16-0744 | 1062-16-0744 | Selective Au, Ni/Cu overall, Sn/Ni/Cu Wire Barrel |
| 1062-16-0777 | 1062-16-0777 | Sn/Ni/Cu overall |

| | | | | |
|--|--|--------------------------------|---|----------------------------|
| THIS DRAWING IS A CONTROLLED DOCUMENT. | | DWN 01DEC2000 STEVE PALLUTH | TE Connectivity | |
| DIMENSIONS: INCHES [mm] | | CHK 05DEC2000 ALEX ROLINSKI | | |
| TOLERANCES UNLESS OTHERWISE SPECIFIED: | | APVD 08DEC2000 R REED | NAME SOCKET, STAMPED AND FORMED SIZE 16 14-18AWG | |
| 0 PLC ± 1 PLC ± 2 PLC ± 3 PLC ±.025 [0.64] 4 PLC ± ANGLES ± | | PRODUCT SPEC 108-151000 | SIZE A3 | |
| MATERIAL 3 | | APPLICATION SPEC 114-151000 | CAGE CODE 4AFU8 | DRAWING NO 1062-16-07XX |
| FINISH SEE TABLE | | WEIGHT 0.43 g | RESTRICTED TO - | |
| | | Customer Drawing | SCALE 6:1 | SHEET 1 OF 1 |
| | | | REV G1 | |