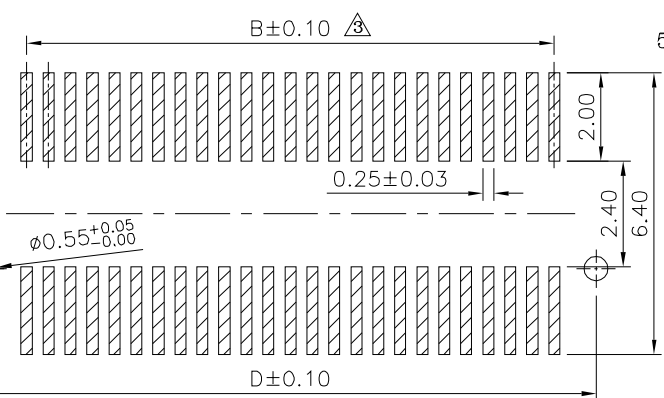
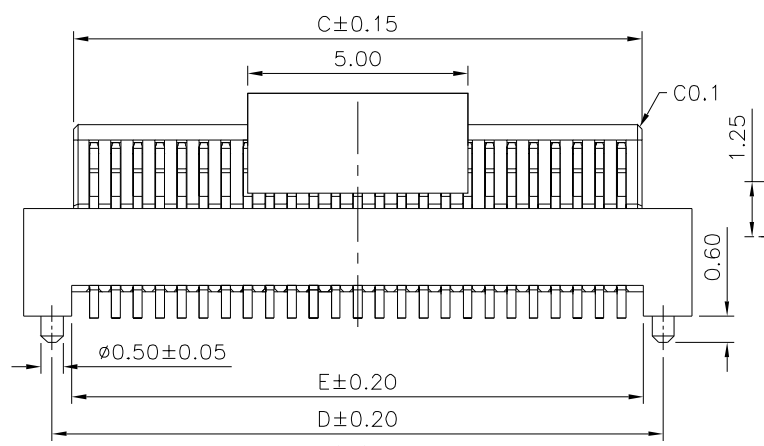
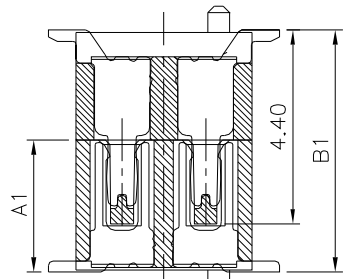
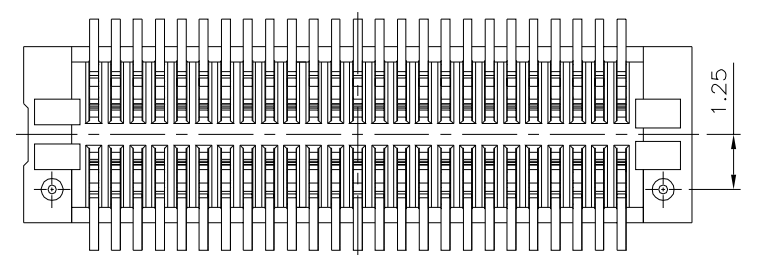


**△ SPECIFICATION**  
**1.General Characteristics:**  
 0.5mm Board To Board Double Slot Type Female XXP  
 SMT 180° With Post Stacking Height=5.5/6.0mm  
 With Cap  
**△ 2.Material&Finish:**  
**△ 4** Housing:LCP(UL94V-0),White  
**△ 3** Contact:Phosphor Bronze,Gold Plated Over Nickel  
**3.Electrical Characteristics:**  
 Current Rating:0.5A AC/DC  
 Voltage Rating:50V AC/DC  
 Contact Resistance:30 Milliohms Max.  
 Insulation Resistance:100 Megaohms Min. At 100V DC  
 Withstanding Voltage:100V AC For One Minute  
**4.Environmental Characteristics:**  
 Operation Temperature Range:-20°C~+105°C  
**5.RoHS Compliant**



△ Recommended P.C.B. Layout



Mating Draw (Ref.)

Part No.(Socket)	Part No.(Plug)	Dim. A1	Dim. B1
1660	1659	3.00	5.5
1660	1661	3.50	6.0

Pin	A	B	C	D	E
10	5.20	2.00	2.92	3.90	3.20
14	6.20	3.00	3.92	4.90	4.20
20	7.70	4.50	5.42	6.40	5.70
30	10.20	7.00	7.92	8.90	8.20
40	12.70	9.50	10.42	11.40	10.70
50	15.20	12.00	12.92	13.90	13.20
60	17.70	14.50	15.42	16.40	15.70
70	20.20	17.00	17.92	18.90	18.20
80	22.70	19.50	20.42	21.40	20.70
90	25.20	22.00	22.92	23.50	23.20
100	27.70	24.50	25.42	26.40	25.70
120	32.70	29.50	30.42	31.40	30.70

**4UCON** 元化興業股份有限公司  
 4UCON TECHNOLOGY INC.

DRAWING No. △  
**19008**  
 SCALE NONE REV. A4

APPROVED BY MEI  
 CHECKED BY HZF  
 DRAWING BY CYP

UNLESS OTHERWISE SPECIFIED TOLERANCES ARE  
 .X ±0.2  
 .XX ±0.15  
 ANG.  
 UNIT mm

NO.	REV.	REVISIONS	CHK	DATE
△ 4	A4	Modify Data	HZF	10/10/2018
△ 3	A3	Modify Data	HZF	03/05/2014
△ 2	A2	Modify Data	HZF	10/18/2011
△ 1	A1	Modify Data	HZF	01/29/2010
△ 0	A0	NEW RELEASE	BECKY	03/01/2005