

# HC-STA-A16PT-BWSC-HT-M25-ELCAL - Connector set



1424462

<https://www.phoenixcontact.com/us/products/1424462>

Please be informed that the data shown in this PDF document is generated from our online catalog. Please find the complete data in the user documentation. Our general terms of use for downloads are valid.



Connector set, number of positions: 16, connection method: Push-in connection, connection cross section: AWG 26- 14

## Commercial data

Item number	1424462
Packing unit	1 pc
Minimum order quantity	1 pc
Sales key	BF63
Product key	BF7AFX
GTIN	4055626372914
Weight per piece (including packing)	472.3 g
Weight per piece (excluding packing)	22.22 g
Customs tariff number	85366990
Country of origin	CN

# HC-STA-A16PT-BWSC-HT-M25-ELCAL - Connector set



1424462

<https://www.phoenixcontact.com/us/products/1424462>

## Set consists of

### HC-A16-I-PT-M - Contact insert

1585375

<https://www.phoenixcontact.com/us/products/1585375>



Contact insert, number of positions: 16+PE, size: D25, number of connections per position: 1, Pin, Push-in connection, 250 V, 16 A, 0.14 mm<sup>2</sup> ... 2.5 mm<sup>2</sup>

---

### HC-A16-I-PT-F - Contact insert

1585388

<https://www.phoenixcontact.com/us/products/1585388>



Contact insert, number of positions: 16+PE, size: D25, number of connections per position: 1, Socket, Push-in connection, 250 V, 16 A, 0.14 mm<sup>2</sup> ... 2.5 mm<sup>2</sup>

# HC-STA-A16PT-BWSC-HT-M25-ELCAL - Connector set



1424462

<https://www.phoenixcontact.com/us/products/1424462>

## HC-STA-D25-BWSC-EL-AL - Housing

1424390

<https://www.phoenixcontact.com/us/products/1424390>



Panel mounting base D25, with single locking latch, material: Die-cast aluminum, salt water resistant, protective cover material: PC, height: 26 mm, cable gland: none, protective cover: yes, Standard

---

## HC-STA-D25-HHFS-1TTM25-ELC-AL - Housing

1424382

<https://www.phoenixcontact.com/us/products/1424382>



Sleeve housing D25, for single locking latch, material: Die-cast aluminum, salt water resistant, cable outlets: 1, straight, 1x M25, height: 72 mm, cable gland: none, Standard

# HC-STA-A16PT-BWSC-HT-M25-ELCAL - Connector set

1424462

<https://www.phoenixcontact.com/us/products/1424462>

## G-INS-M25-M68N-NNES-S - Cable gland

1411165

<https://www.phoenixcontact.com/us/products/1411165>



Cable gland, material for screw connection: Brass, nickel-plated, external cable diameter 11 mm ... 17 mm, shielding: no, connecting thread: M25 x 1.5, color: silver, with O-ring

# HC-STA-A16PT-BWSC-HT-M25-ELCAL - Connector set



1424462

<https://www.phoenixcontact.com/us/products/1424462>

## Technical data

### Product properties

Type	D25
Product type	Connector set
Number of positions	16
Application	Standard
No. of cable outlets	1
Housing type	Complete housing
Protective cover	yes

### Insulation characteristics

Overvoltage category	III
Degree of pollution	3

### Electrical properties

Rated voltage (III/3)	250 V
Rated surge voltage	4 kV
Rated current	16 A

### Connection data

Connection method	Push-in connection
Connection technology	Push-in connection
Conductor cross section	0.14 mm <sup>2</sup> ... 2.5 mm <sup>2</sup> (applies to stranded conductors with ferrules) 0.14 mm <sup>2</sup> ... 2.5 mm <sup>2</sup> (applies to stranded conductors with ferrules)
Connection cross section AWG	26 ... 14

### Dimensions

#### Installation dimensions

Width of the assembly cutout	24 mm
Length of the assembly cutout	74 mm

### Material specifications

Material	Die-cast aluminum, saltwater-resistant
Flammability rating according to UL 94	V0
Contact material	Copper alloy
Contact surface material	Ag
Contact carrier material	PC
Locking latch material	PA
Impact strength	IK08

### Cable/line

# HC-STA-A16PT-BWSC-HT-M25-ELCAL - Connector set



1424462

<https://www.phoenixcontact.com/us/products/1424462>

External cable diameter ( )	11 mm ... 17 mm
	14 mm ... 17 mm (for UL 514 B)

## Environmental and real-life conditions

### Ambient conditions

Degree of protection	IP66
	IP67
Impact strength	IK08
Ambient temperature (operation)	-40 °C ... 100 °C

## Mounting

Connection method	Push-in connection
-------------------	--------------------

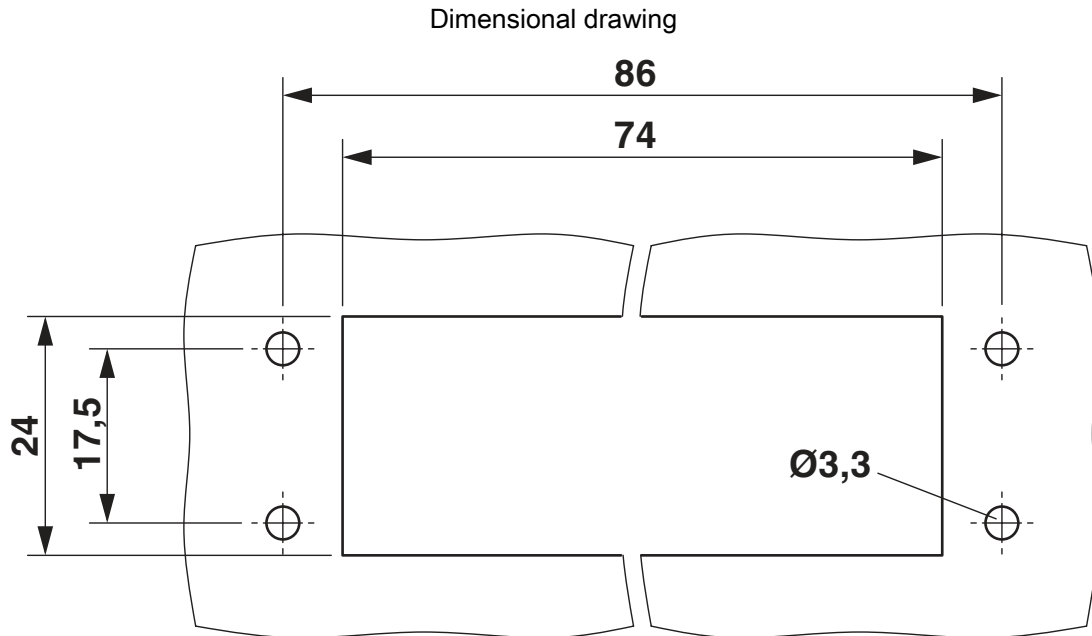
# HC-STA-A16PT-BWSC-HT-M25-ELCAL - Connector set



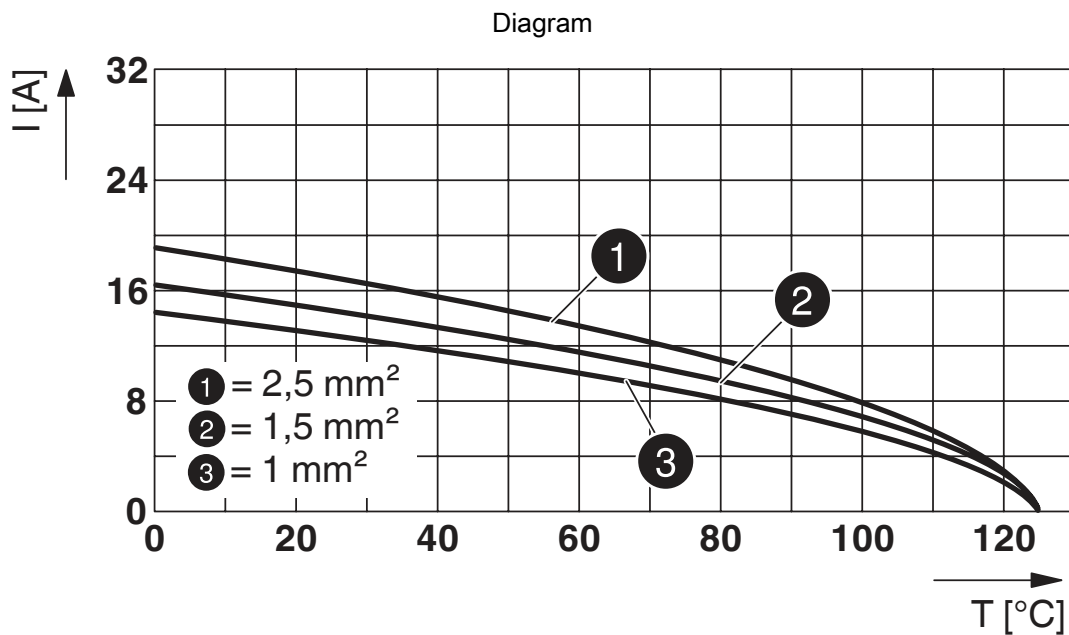
1424462

<https://www.phoenixcontact.com/us/products/1424462>

## Drawings



Mounting cutout



Derating diagram

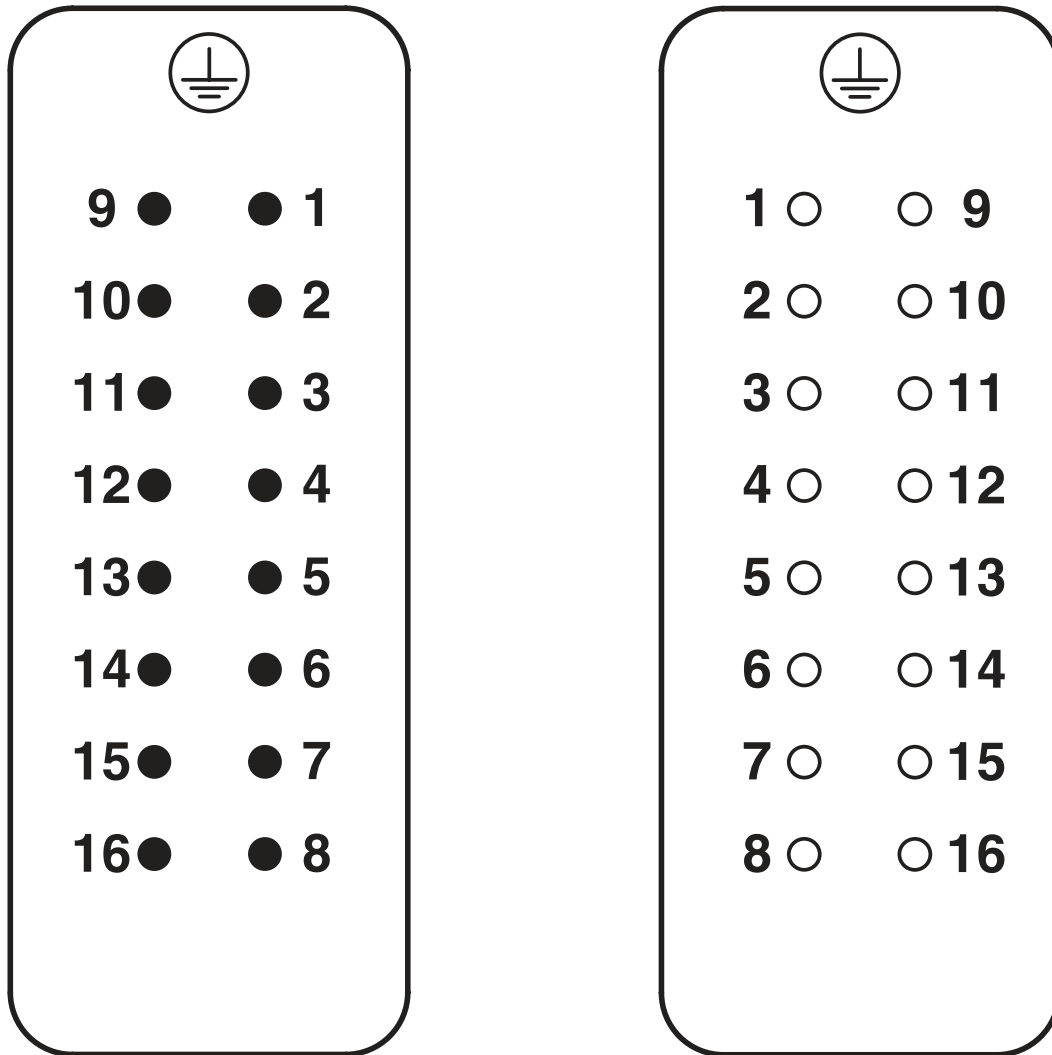
# HC-STA-A16PT-BWSC-HT-M25-ELCAL - Connector set



1424462

<https://www.phoenixcontact.com/us/products/1424462>

Schematic diagram



Pin assignment, connection side, pin left, socket right



# HC-STA-A16PT-BWSC-HT-M25-ELCAL - Connector set



1424462

<https://www.phoenixcontact.com/us/products/1424462>

## Approvals

🔗 To download certificates, visit the product detail page: <https://www.phoenixcontact.com/us/products/1424462>

**DNV**

Approval ID: TAE000037S



**EAC**

Approval ID: RU C-DE.BL08.B.00511

# HC-STA-A16PT-BWSC-HT-M25-ELCAL - Connector set



1424462

<https://www.phoenixcontact.com/us/products/1424462>

## Classifications

### ECLASS

ECLASS-11.0	27440101
ECLASS-12.0	27440113
ECLASS-13.0	27440113

### ETIM

ETIM 8.0	EC002636
----------	----------

### UNSPSC

UNSPSC 21.0	39121400
-------------	----------

# HC-STA-A16PT-BWSC-HT-M25-ELCAL - Connector set



1424462

<https://www.phoenixcontact.com/us/products/1424462>

## Environmental product compliance

REACH SVHC	Lead 7439-92-1
China RoHS	Environmentally Friendly Use Period = 50 years
	For information on hazardous substances, refer to the manufacturer's declaration available under "Downloads"

Phoenix Contact 2023 © - all rights reserved  
<https://www.phoenixcontact.com>

Phoenix Contact USA  
586 Fulling Mill Road  
Middletown, PA 17057, United States  
(+717) 944-1300  
[info@phoenixcon.com](mailto:info@phoenixcon.com)