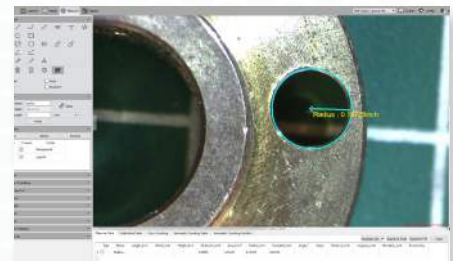




Mighty Cam ES	Macro Lens	Heavy Duty Post Stand	Focus Mount w/ Built in LED Ring Light
HDMI/USB Camera designed for quick & accurate inspection	7x - 70x Magnification at a 6" working distance	Accommodates a large variety of parts	Ensures ring light is secure and won't come loose



Excellent Color Reproduction



USB Mode- Advanced Imaging/ Measurement Software Included



HDMI Mode: Image/Video Capture, On-Screen Tools (No PC required)

Mighty Cam ES

[7x-70x] w/ Macro Lens & Post Stand

High Definition 1080p inspection system with a 22" monitor offering superb image quality. **Provides a magnification range of 7x to 70x with a 6" working distance.** You can operate this system with or without a PC. Without a PC, the camera connects directly to the included HDMI monitor. View and record images using the included on screen tools. Images & videos can be saved to the included SD card. Connect the camera to a PC to utilize more advanced features in the included software. The LED Ring Light is built into the focus mount to ensure that it is secure and won't come loose

Features

- Camera features HDMI and USB outputs
- Inspect directly on an HD monitor or from a computer
- Advanced imaging/measurement software included
- 7x - 70x Magnification at a 6 inch working distance
- Includes Aven's Focus mount with built-in LED ring light
- LED Ring Light is built into the focus mount to ensure that it is secure and will not come loose

Mighty Cam ES		
<i>7x-70x w/ Macro Lens & Post Stand</i>		
Item #	258-207-570-ES	
Magnification	7x-70x	
Working Distance	6"	
Interface	USB 2.0 & HDMI	
Resolution	2MP 2592 (H) x 1944 (V)	
Frame Rate	USB 2.0 @ 15FPS	HDMI @ 15FPS
Software	USB 2.0 Mosaic V2	HDMI Cloud 1.0 ver
Package Contents	<ul style="list-style-type: none"> • Mighty Cam ES (26100-259) • Standard Stand 25mm (26800B-570) • Computer Macro Lens (26700-181) • Focus Mount with LED Ring Light (26200B-207) • 22" HD Monitor (26700-406) • Lens Adapter (26700-181AP) 	