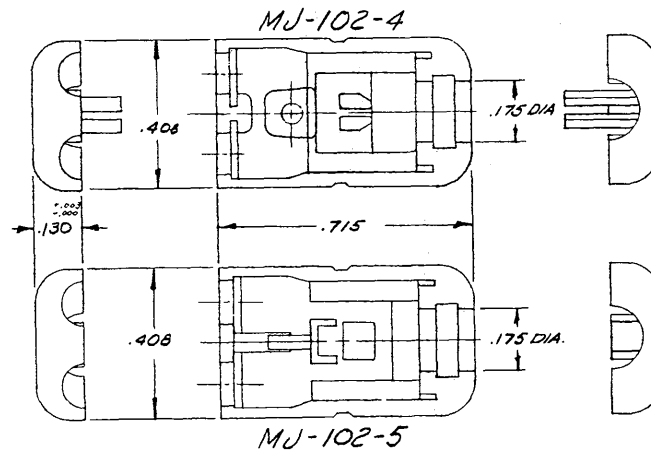


NOTE:
 1. EXTRACTION FORCE WITHOUT PUSHING RELEASE BUTTON: 181bs MIN



C MJ-102

DESIGNED BY <i>M. Andre</i>		DATE 5-27-69		MATERIAL	
CHECKED BY		APPR. BY		FINISH	
F ADDED NOTE 1		10-1-80		WEIGHT	
E 465 WAS .458		11/15/80		SCALE 4:1	
D ADD TOLERANCE		9/15/80		TITLE	
C ADD 1/4 REMOVE 1/8		9/15/80		MICROPHONE JACK	
B WAS 1/16 - 1/8 - 2		11/28/80		NEXUS STAMFORD, CONN.	
A WAS MJ-102-1		4/1/81		SIZE G.W. NO.	
LET. REVISION		DATE CHG.		C MJ-102	
UNLESS OTHERWISE SPECIFIED DIMENSIONS ARE IN INCHES FRACTIONS DECIMALS ANGLES				DO NOT SCALE DWG. SHEET OF	