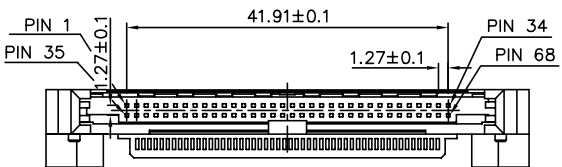
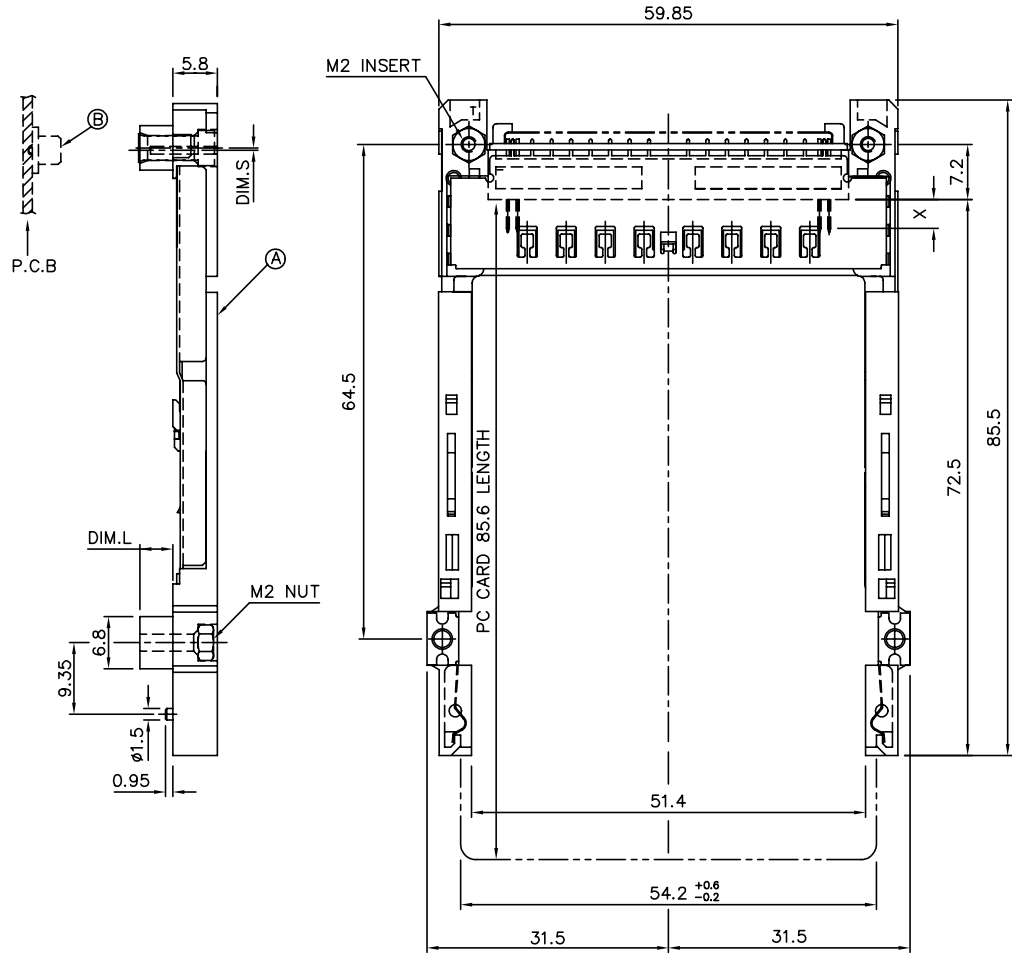


FCI CONFIDENTIAL

FCI CONFIDENTIAL

PRODUCT NO.	DIM.L	DIM.S
52599-022/022LF	2.2	1.0
52599-043/043LF	4.3	-0.3
52599-050/050LF	5.0	-0.3



P/N: 52599-***/***/LF
ABOVE P.C.B

NOTES:

- MATERIAL:
 - 1.1 EJECT HEADER ASS'Y
PLASTIC HOUSING: HIGH TEMPERATURE THERMOPLASTIC UL94V-0 BLACK
PIN: COPPER ALLOY
PCB: FR4
PLASTIC GUIDE: HIGH TEMPERATURE THERMOPLASTIC UL94V-0 BLACK
 - 1.2 RECEPTACLE
PLASTIC: HIGH TEMPERATURE THERMOPLASTIC UL94V-0 BLACK
PIN: BeCu
- FINISH
PIN :
UNDER PLATING: 1.27 um MIN. Ni
CONTACT AREA: 0.076 μm MIN. GOLD

SOLDER TAIL: 2.5 um MIN. Sn-Pb
: 2.5 um MIN. PURE Sn (FOR -***/LF)

GROUND SHIELD :
UNDER PLATING: 1.27 um MIN. Ni
CONTACT SURFACE: 0.2 um GOLD (ONE SIDE ONLY)
- P.C.B. ARE AS APPEARS INSTALLED
- DIM "X"

4.25±0.1	3.5±0.1	5.0±0.1
OTHERS	36,67	1,17,34,35,51,68
- DO NOT TOUCH AND KEEP CLEAN THE SURFACES OF PCB OF HEADER ASS'Y.
- IF LEAD FREE P/N. THE HOUSING WILL WITHSTAND EXPOSURE TO 260°C PEAK TEMPERATURE FOR 10 SECONDS IN A WAVE SOLDER APPLICATION WITH A 1.00MM MINIMUM THICK CIRCUIT BOARD.
- LEAD FREE PRODUCT MEETS EUROPEAN UNION DIRECTIVES AND OTHER COUNTRY REGULATIONS AS DESCRIBED IN GS-22-008
- IF LEAD FREE P/N. PACKAGING MEETS GS-14-920 SPECIFICATION
- PRODUCT SPEC:110-263

ORDERING INFORMATION

NAME	PART NO.	Q'TY
Ⓐ EJECT HEADER ASS'Y	52599-***/***/LF	1
Ⓑ MATING RECEPTACLE	73277-101000/101402LF	1

mat'l. code		surface ISO 1302		tolerance ISO 406 ISO 1101		projection ISO 1101		product family CARDBUS	
ltr ecn no dr		date		tolerances unless otherwise specified		title		CARDBUS NONE PUSH ROD, TYPE 1/2/3	
H	EX-N-011389	ZK	04/02/12	angles		linear		MM	
B	T00270	WL	08/04/00	± 0.30		scale 1:2:1		dwg no	
C	N05-0135	WB	05/27/05	± 2'		sheet 1 of 5		size	
D	N05-0316	MZ	11/18/05	chr		Mike Zhou 08/18/06		52599	
E	N06-0081	MZ	03/28/06	engr		Mike Zhou 08/18/06		A4	
F	N06-0220	MZ	08/18/06	chr		Mike Zhou 08/18/06		type CUSTOMER	
G	N08-0028	MZ	11/21/06	appa		Qin David 08/18/06		Drawing	
sheet	revision	H	H	H	H	H			
index	sheet	1	2	3	4	5			

FCI CONFIDENTIAL

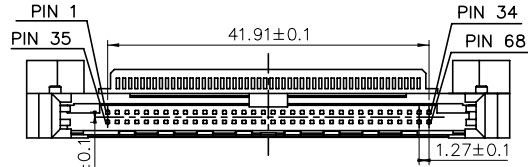
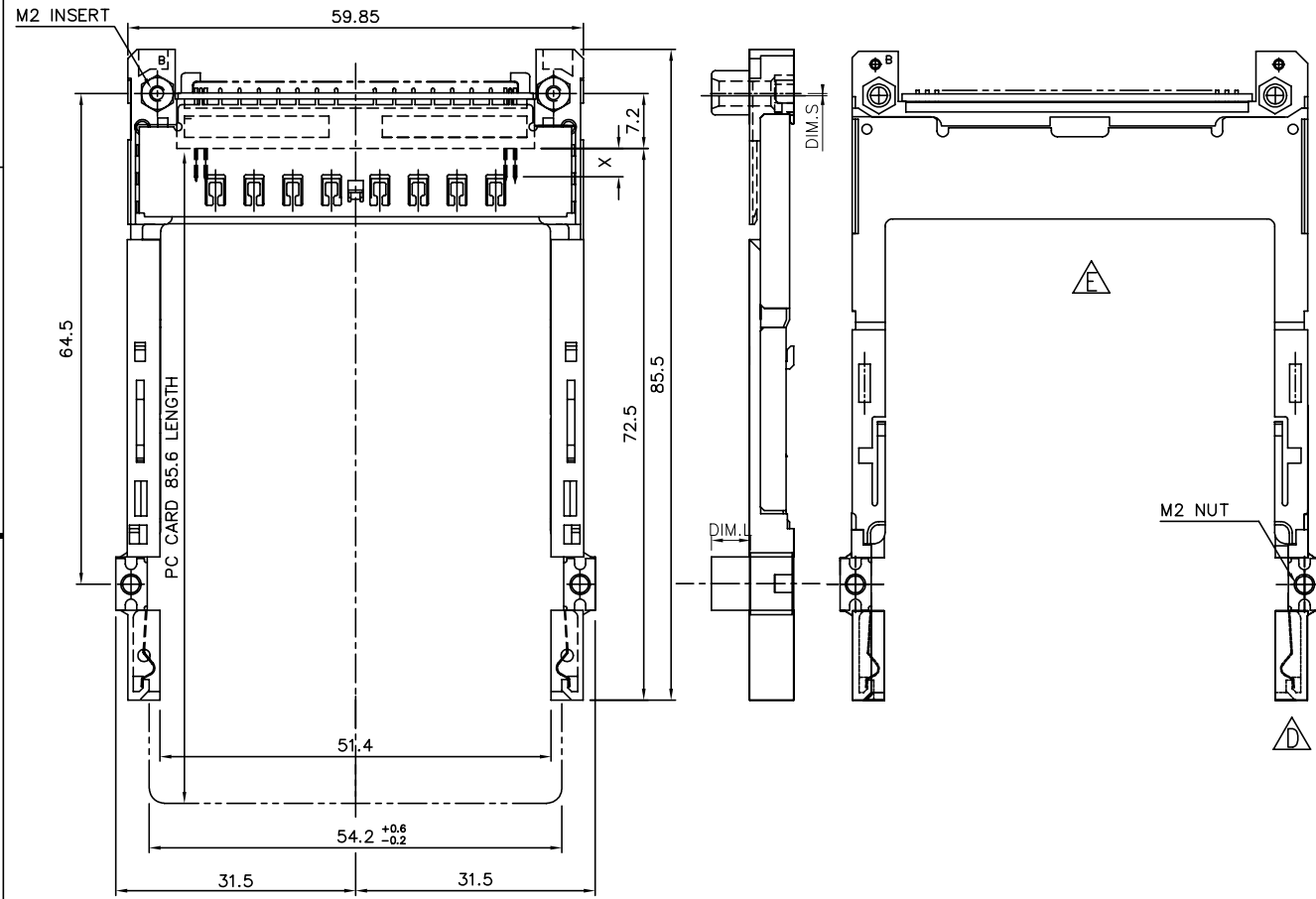


This document is the property of and embodies CONFIDENTIAL PROPRIETARY information of FCI. No part of this information or this document may be used in any way or disclosed to others without the written consent of FCI.



Copyright FCI.

PRODUCT NO.	DIM.L	DIM.S
52599-550	5.0	-0.3
52599-550LF	5.0	-0.3
52599-550MLF	5.0	-0.3



P/N: 52599-550/550LF/550MLF
BELOW P.C.B

NOTES:

- MATERIAL:
 - 1.1 EJECT HEADER ASS'Y
 - PLASTIC HOUSING: HIGH TEMPERATURE THERMOPLASTIC UL94V-0 BLACK
 - PIN: COPPER ALLOY
 - PCB: FR4
 - PLASTIC GUIDE: HIGH TEMPERATURE THERMOPLASTIC UL94V-0 BLACK
- RECEPTACLE
 - PLASTIC: HIGH TEMPERATURE THERMOPLASTIC UL94V-0 BLACK
 - PIN: BeCu
- FINISH
 - PIN : UNDER PLATING: 1.27 um MIN. Ni
 - CONTACT AREA 1: 0.076 um MIN. GOLD
 - CONTACT AREA 2 : 0.076 um MIN. GOLD (FOR****-MLF)
 - SOLDER TAIL:1) 2.5 um MIN. Sn-Pb
 - :2) 2.5 um MIN. PURE Sn (FOR -***LF&-***MLF)
- GROUND SHIELD :
 - UNDER PLATING: 1.27 um MIN. Ni
 - CONTACT SURFACE: 0.2 um GOLD (ONE SIDE ONLY)
- P.C.B. ARE AS APPEARS INSTALLED
- DIM "X"

4.25±0.1	3.5±0.1	5.0±0.1
OTHERS	36,67	1,17,34,35,51,68
- DO NOT TOUCH AND KEEP CLEAN THE SURFACES OF PCB OF HEADER ASS'Y.
- IF LEAD FREE P/N. THE HOUSING WILL WITHSTAND EXPOSURE TO 260°C PEAK TEMPERATURE FOR 10 SECONDS IN A WAVE SOLDER APPLICATION WITH A 1.00MM MINIMUM THICK CIRCUIT BOARD.
- LEAD FREE PRODUCT MEETS EUROPEAN UNION DIRECTIVES AND OTHER COUNTRY REGULATIONS AS DESCRIBED IN GS-22-008
- IF LEAD FREE P/N. PACKAGING MEETS GS-14-920 SPECIFICATION
- PRODUCT SPEC:110-263

ORDERING INFORMATION

NAME	PART NO.	Q'TY
Ⓐ EJECT HEADER ASS'Y	52599-***/***/**LF	1
Ⓑ MATING RECEPTACLE	73277-101000/101402LF	1

mat'l. code	surface	tolerance	projection	product family
	ISO 1302	ISO 406 ISO 1101		CARDBUS
ltr ecn no dr date	tolerances unless otherwise specified			
H	angles	linear ± 0.30	MM	CARDBUS NONE PUSH ROD, TYPE 1/2/3
	±2'		scale 1:2:1	
dr	Mike Zhou	08/18/06		dwg no
engr	Mike Zhou	08/18/06		sheet 2 of 5
chr	Mike Zhou	08/18/06		52599
appd	Qin David	08/18/06		A4
				type CUSTOMER Drawing

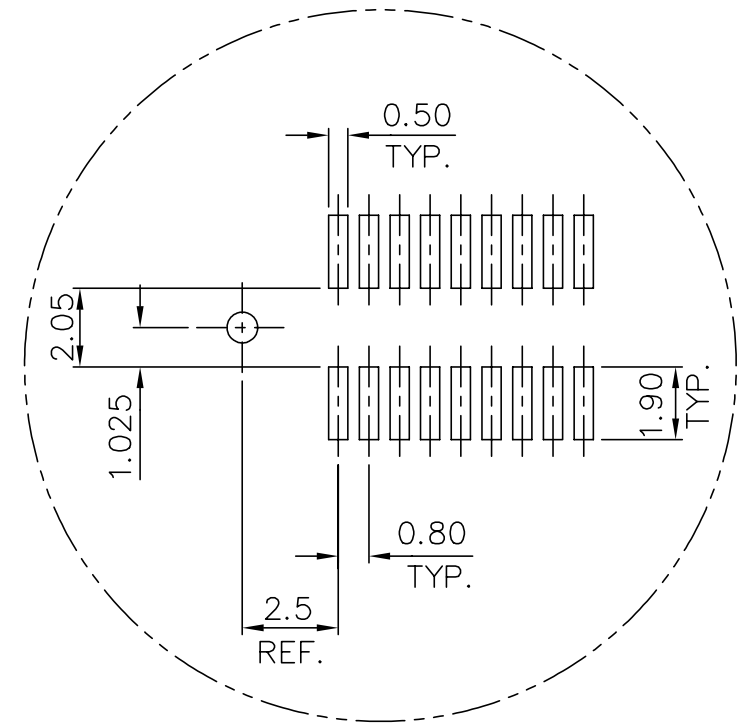
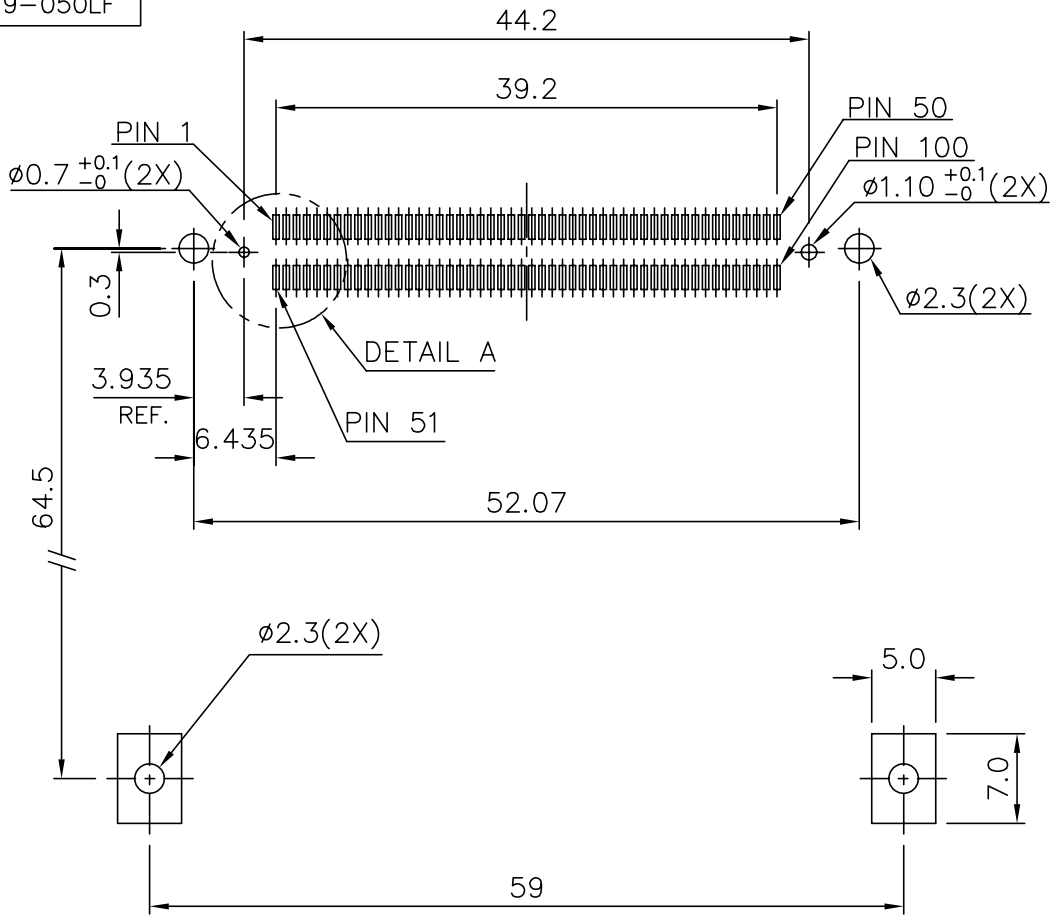
sheet index	revision sheet																		
-------------	----------------	--	--	--	--	--	--	--	--	--	--	--	--	--	--	--	--	--	--

FCI CONFIDENTIAL

FCI

This document is the property of and embodies CONFIDENTIAL PROPRIETARY information of FCI. No part of this information or this document may be used in any way or disclosed to others without the written consent of FCI. Copyright FCI.

PRODUCT NO.
52599-043
52599-050
52599-043LF
52599-050LF



DETAIL A

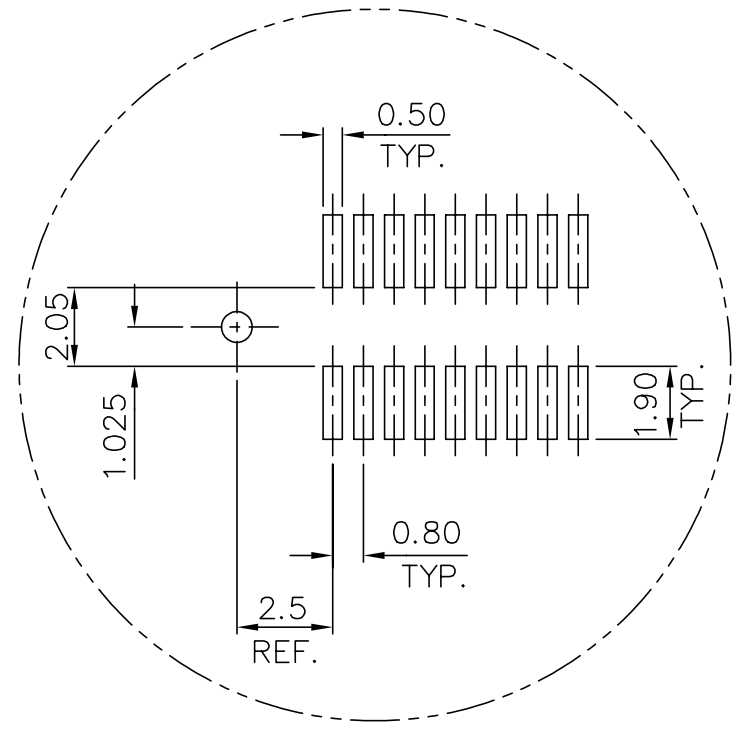
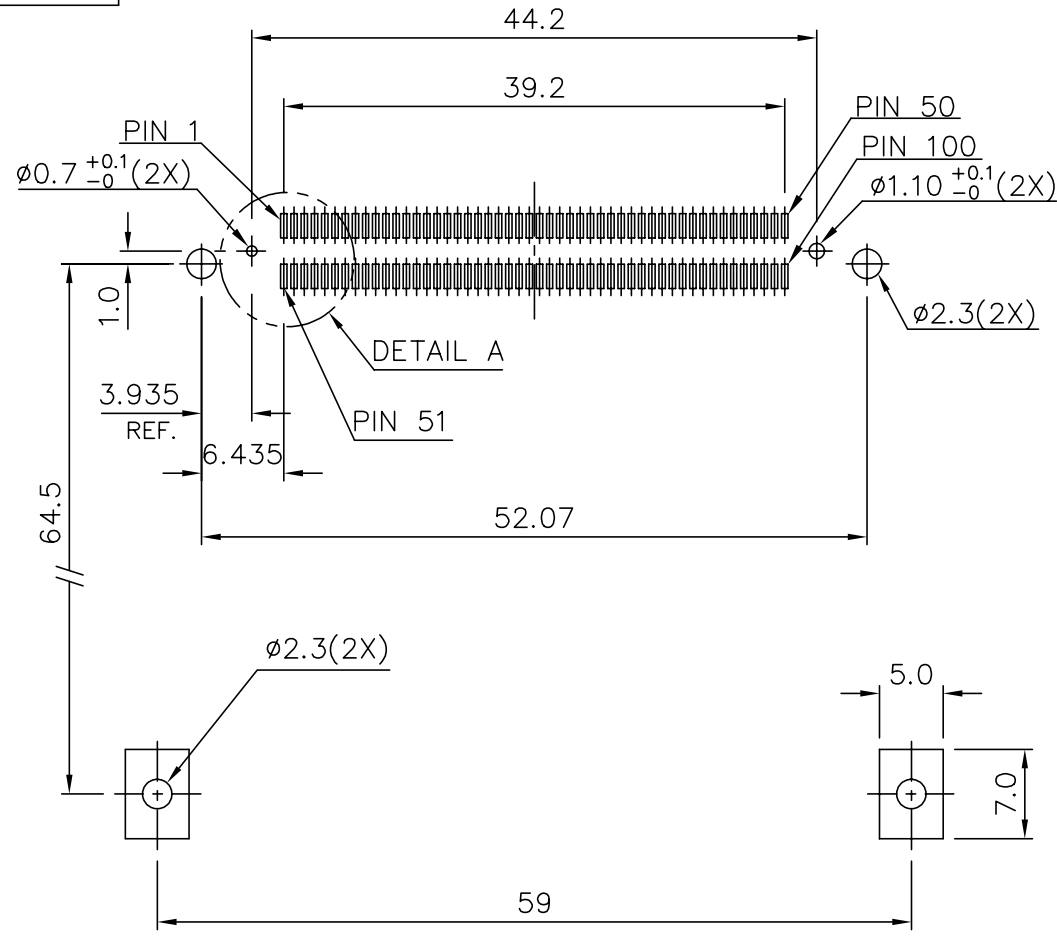
4 CARD INSERTION DIRECTION

mat'l. code	surface	tolerance	projection	product family
	ISO 1302	ISO 406 ISO 1181	1:1	CARDBUS
tr	ecn	no	dr	date
tolerances unless otherwise specified				
H	angles	linear	± 0.10	MM
	± 2'			scale 1.5:1
	dr	Mike Zhou	08/18/06	
	engr	Mike Zhou	08/18/06	
	chr	Mike Zhou	08/18/06	
	appd	Qin David	08/18/06	
sheet	revision			
index	sheet			
				product title
				CARDBUS NONE PUSH ROD, TYPE 1/2/3
				dwg no
				52599
				sheet 3 of 5
				size
				A4
				type
				CUSTOMER Drawing

FCI CONFIDENTIAL

FCI CONFIDENTIAL

PRODUCT NO.
52599-022
52599-022LF



DETAIL A

4 CARD INSERTION DIRECTION

mat'l. code	surface ISO 1302	tolerance ISO 406 ISO 1101	projection 1:1	product family CARDBUS		
tr	ec	n	dr	date	tolerances unless otherwise specified	title CARDBUS NONE PUSH ROD, TYPE 1/2/3
H					angles linear ± 0.10	MM
					$\pm 2'$	scale 1.5:1
			dr	Mike Zhou 08/18/06		dwg no
			enr	Mike Zhou 08/18/06		sheet 4 of 5
			chr	Mike Zhou 08/18/06		size
			app	Qin David 08/18/06		52599
						A4
						type CUSTOMER
						Drawing

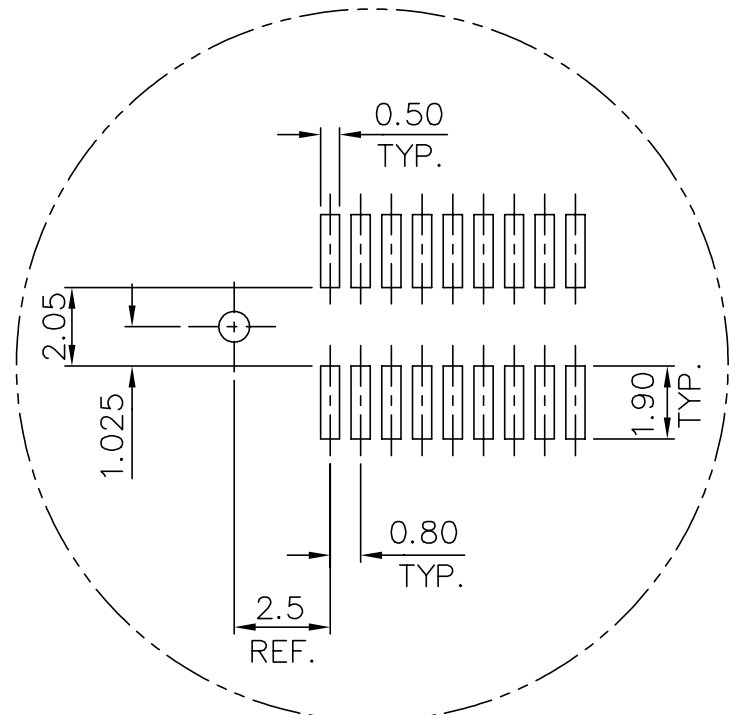
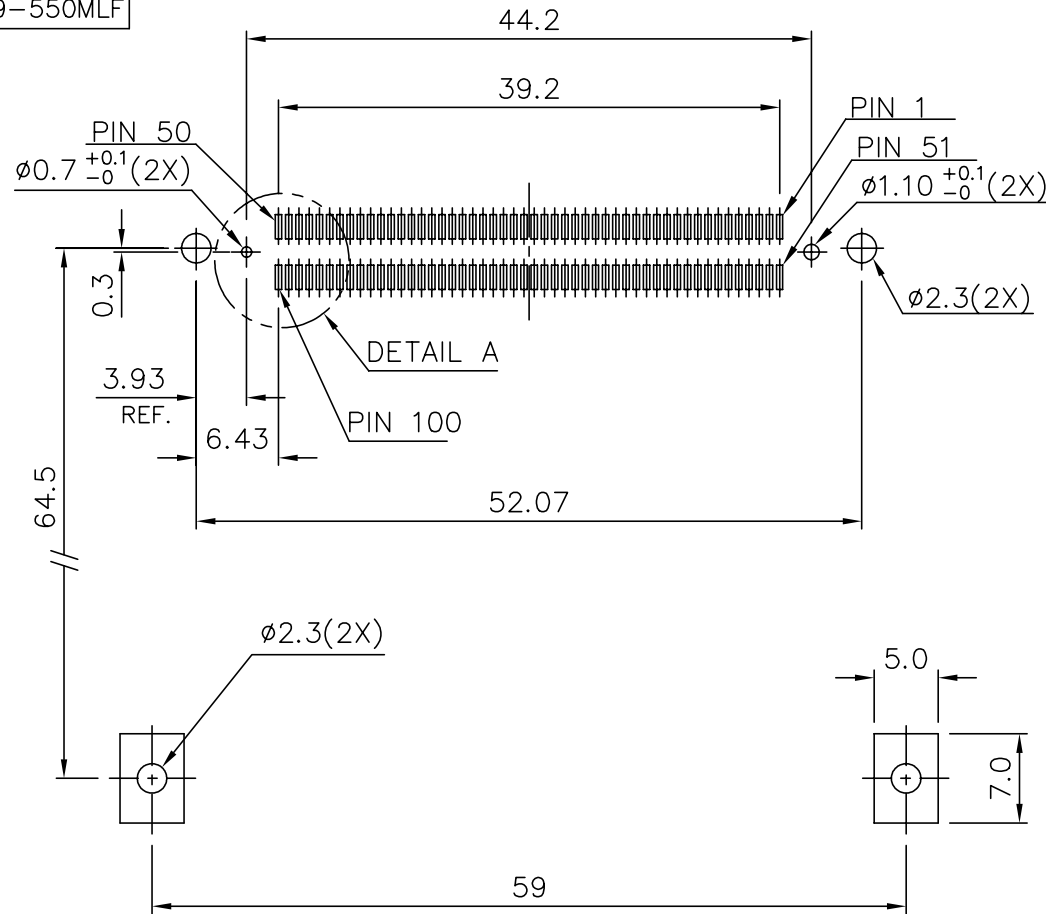
sheet index	revision sheet																		
-------------	----------------	--	--	--	--	--	--	--	--	--	--	--	--	--	--	--	--	--	--

This document is the property of and embodies CONFIDENTIAL PROPRIETARY information of FCI. No part of this information shall be disclosed, copied, reproduced, or used in any way or disclosed to others without the written consent of FCI. Copyright FCI.

FCI CONFIDENTIAL

FCI CONFIDENTIAL

PRODUCT NO.	
52599-550	
52599-550LF	
52599-550MLF	



DETAIL A

4 CARD INSERTION DIRECTION

mat'l. code	surface	tolerance	projection	product family
	ISO 1302	ISO 406 ISO 1101	1:1	CARDBUS
tr	ecn	no	dr	date
tolerances unless otherwise specified				title
H				CARDBUS NONE PUSH ROD, TYPE 1/2/3
	angles	linear	± 0.10	MM
	± 2'			scale 1.5:1
	dr	Mike Zhou	08/18/06	dwg no
	engr	Mike Zhou	08/18/06	sheet 5 of 5
	chr	Mike Zhou	08/18/06	size
	appd	Qin David	08/18/06	A4
				type CUSTOMER Drawing

sheet	revision																			
index	sheet																			

This document is the property of and embodies CONFIDENTIAL PROPRIETARY information of FCI. No part of this information shall be disclosed, copied, reproduced, or transmitted in any way or by any means without the written consent of FCI. Copyright FCI.

FCIconnect.com