

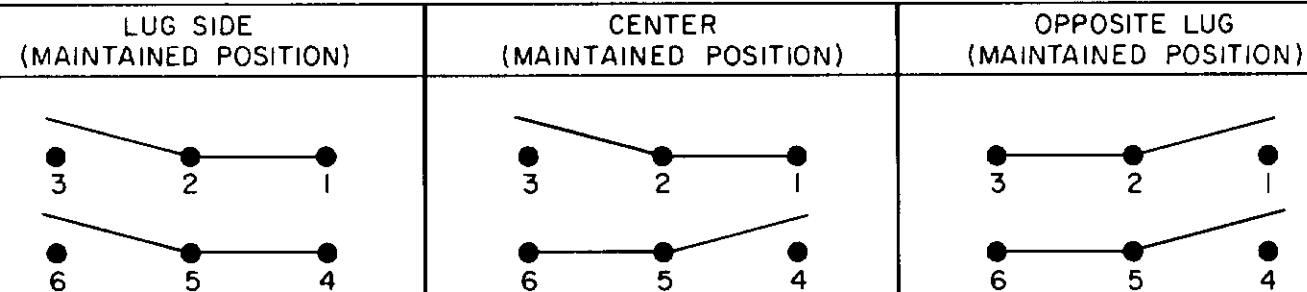
MICRO SWITCH
 FREEPORT ILLINOIS U.S.A.
 A DIVISION OF HONEYWELL
 FED. MFG. CODE 91929

SWITCH - TOGGLE
ABOVE PANEL MOUNT

CATALOG LISTING
2TP16-10

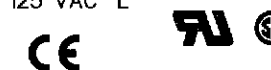
THIS DRAWING COVERS A PROPRIETARY ITEM AND IS THE PROPERTY OF MICRO SWITCH, A DIVISION OF HONEYWELL. THIS DRAWING IS NOT TO BE COPIED OR USED WITHOUT THE APPROVAL OF MICRO SWITCH.

CIRCUIT DIAGRAM



ELECTRICAL DATA

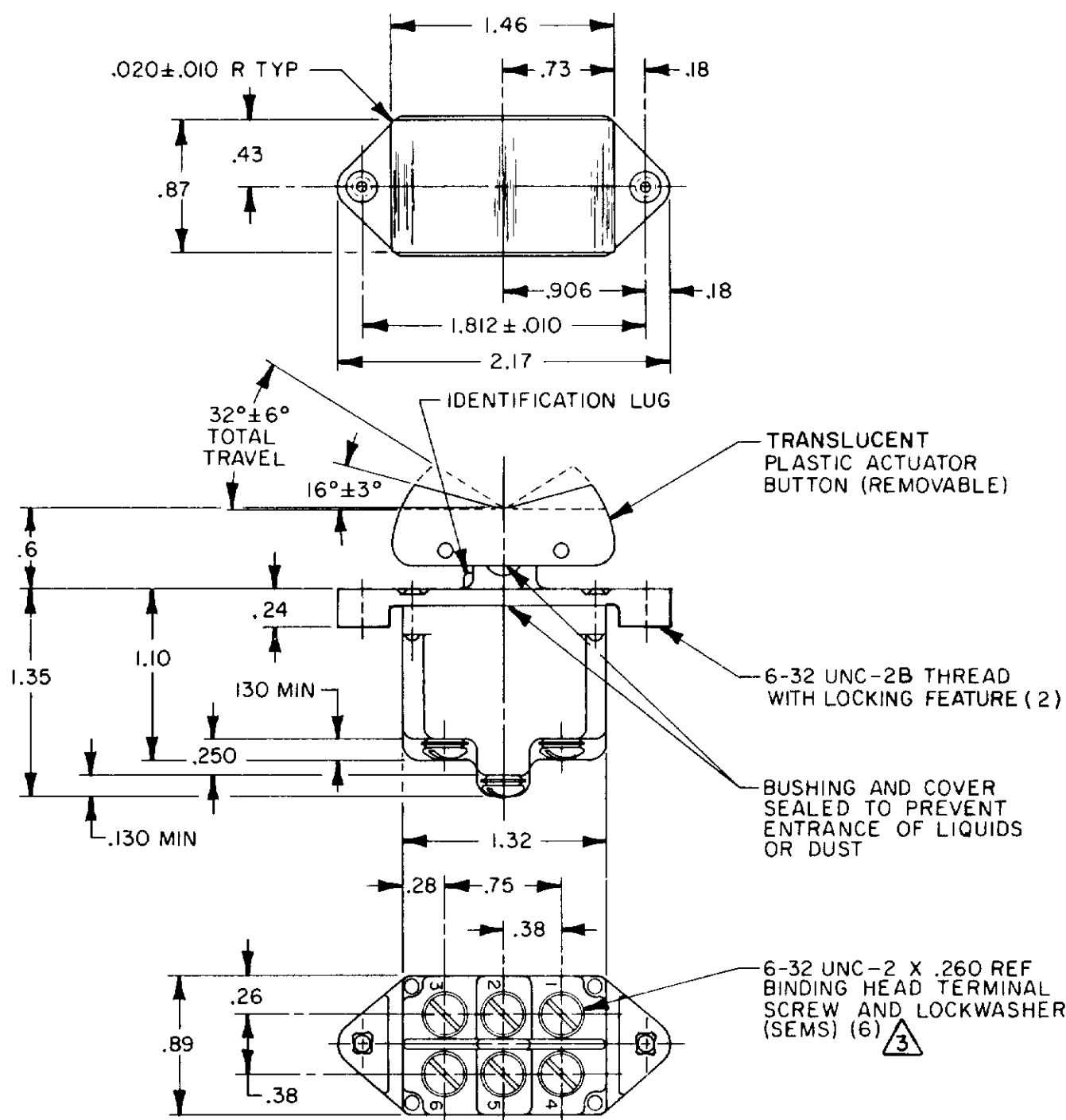
L191 15A 125, 250, 277 VAC
 1/2HP 125 VAC
 1HP 250, 277 VAC
 5A 125 VAC "L"



DRAWING NUMBER
2TP16-10
 PAGE 1 OF 1
 ISSUE **10**

REVISIONS
 A CO 50791 WJM 9 JUN 82
 B C056164 J A P 6 M 85
 C C058717-B WJK 21 OCT 86
 D C077697 WJM 10 NOV 88
 E CO-94413 J J A 8 OCT 99

FORMTEK
 FO-52854-C
 DRAWN WJM 9 JUN 82



- NOTES**
- 1 - MICRO SWITCH CATALOG LISTING MARKED ON SIDE OF SWITCH
 - 2 - SWITCHES WILL WITHSTAND TEMPERATURE OF 160°F
 - 3 - SCREWS FURNISHED UNASSEMBLED

THIRD ANGLE PROJECTION

SCALE FULL

DO NOT SCALE PRINT

TOLERANCES
 APPLY TO DESIGN UNITS. CONVERSIONS ARE ONLY FOR REFERENCE. UNLESS NOTED, TOLERANCES ARE:

DIM	TOL	DIM	TOL
mm	mm/in	in	mm/in
NO PLACES	X	1/04	X
TWO PLACES	XX	0.42/0.18	XX
THREE PLACES	XXX	0.18/0.08	XXX
ANGLES		0.82/0.3	
		0.26/0.15	
		0.13/0.05	

DESIGN UNITS: METRIC US CUSTOMARY

WEIGHT