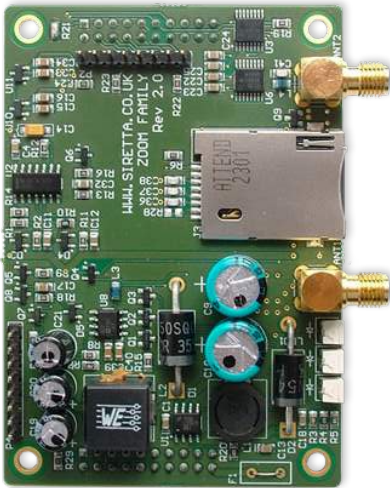


ZOOM-G-UMTS

UMTS Socket Modem with GPS



Key Features

- Penta band UMTS
- Quad band GSM/GPRS
- GPRS class 10
- AT command driven
- Embedded TCP/IP stack
- Python script interpreter
- 5 - 42V DC supply
- RoHS compliant
- Extended temperature range
- Extended RF sensitivity

Additional Features

- » Digital voice and SMS
- » IP stack with TCP and UDP protocol
- » Standard and extended AT command set

GPS

- » GPS power consumption:
 - 15mA in low profile tracking mode
 - 30µA in sleep mode
- » High sensitivity for indoor reception, up to -163dBm (with active antenna)
- » Accuracy < 3m
- » Extremely fast TTFF's at low signal levels
- » Hot start autonomous < 3s
- » Warm start autonomous < 40s
- » Cold start autonomous < 45s
- » Supports multi channel GPS, L1 1575.42MHz
- » GPS NMEA 0183 output format
- » Datum WGS-84
- » Dedicated GPS AT commands
- » Low power consumption

General Description

The ZOOM-G-UMTS (Previously known as the SQ910-SKT) is supplied as standard with a global UMTS and quad band GSM/GPRS module. The 'ZOOM-G-UMTS' has been designed for simple integration into both new and existing designs and is intended to be a cost effective, fully tested alternative to a standalone bare module.

The ZOOM-G-UMTS can be integrated into your application to enable cellular communication quickly, with little effort and no formal testing required on your part until you go to production.

The ZOOM-G-UMTS provides a full set of interfaces through the 2 x 20 way IDE connectors. These headers are split into 2 categories, a function header and a communication header.

The function header includes access to the modules onboard GPIO connections and LED indicators and includes protection against over voltage.

The communication header provides access to all of the serial channels available on the module including USB / standard RS232 interface and the debug RS232 port. Both headers provide power connections and on/off controls.

Integrated with a highly sensitive A-GPS receiver, the ZOOM-G-UMTS is capable of indoor tracking and predictive algorithms allowing superior GPS functionality.

Rev 1.8

ZOOM-G-UMTS

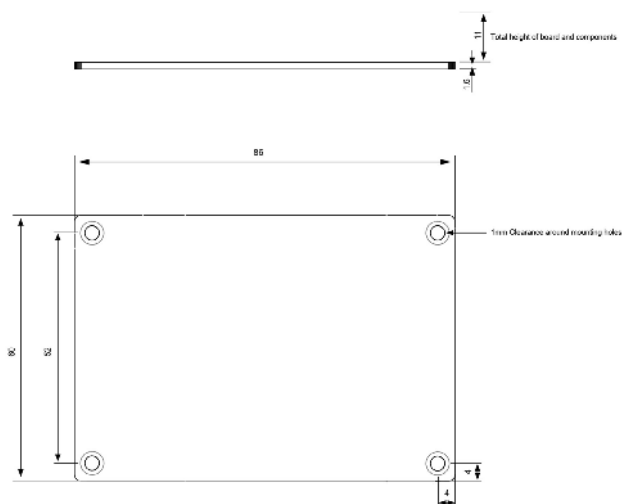
UMTS Socket Modem with GPS

Specifications - Electrical

Operating temperature range:	-40 to +85°C
Antenna impedance:	50 ohm
Operating frequencies:	2G: 850, 900, 1800, 1900MHz 3G: 800/850, 1900, 2100MHz
Power:	5 - 42V
Output power:	Class 4 (2W) @ 850, 900MHz Class 1 (1W) @ 1800, 1900MHz
Supply voltage range:	5 - 42V DC
Sensitivity:	-108dBm @ UMTS -107dBm @ GSM 850/900MHz -106dBm @ DCS1800/PCS1900MHz

Specifications - Mechanical

Dimensions:	85mm x 60mm x 24mm
Weight:	54g
Antenna connector:	SMA female connector



Interfaces:

- » Sim card holder: 1.8V / 3V interface
- » 2 x IDE 20-way connectors

Approvals:

- » RoHS compliant
- » CE, GCF (Europe) FCC, PTCRB, IC (North America)

Data:

- » HSPA category 6 in uplink and category 10 in downlink
 - Downlink up to 14.4 Mbps
 - Uplink to 5.76 Mbps
- » UMTS downlink/uplink up to 384 kbps
- » EDGE
 - Downlink up to 296 kbps
 - Uplink up to 236.8 kbps
- » GPRS
- » CSD

SMS:

- » Point-to-point mobile originated and mobile terminated SMS
- » Concatenated SMS supported
- » SMS cell broadcast
- » Text and PDU mode circuit switched data (CSD) transmission
- » Asynchronous transparent CSD

Please contact your Siretta representative for ordering information