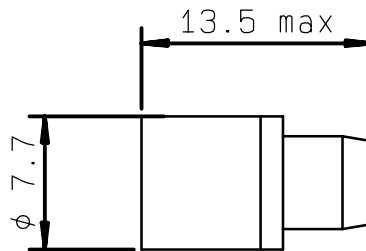


**TITLE:** 1 W 18GHZ BMA/m COAXIAL TERMINATION

**LTR. B**

DRAWING



General tolerances: +/- 0.5 mm

ELECTRICAL CHARACTERISTICS

FREQUENCY RANGE	:	DC - 18GHz
IMPEDANCE	:	50 Ohms
DC RESISTANCE	:	50 Ohms ± 5 %
AVERAGE POWER HANDLING	:	1 W at 25°C
PEAK POWER HANDLING	:	100 W ( 1 µs, 1%.) at 25°C
V.S.W.R :	DC - 4 GHz	: <= 1.10
	4 - 12.4 GHz	: <= 1.10
	12.4 - 18 GHz	: <= 1.20

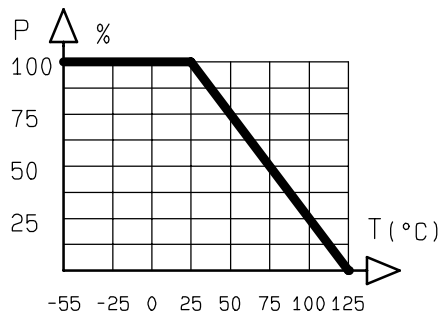
MECHANICAL CHARACTERISTICS

CONNECTOR	:	BMA male per MIL C 39012
MAXIMUM WEIGHT	:	3 grams

ENVIRONMENTAL CHARACTERISTICS

OPERATING TEMPERATURE RANGE (°C)	:	-55 , +125
STORAGE TEMPERATURE RANGE (°C)	:	-55 , +125

Power derating  
Versus temperature



Tentative data subject to change without notice

PEN <b>86148</b>	QUALITY Dpt App.				
	PAGE 1 / 1	DATE 06.03.87	NAME KL	B new format	09.10.92
			LTR	REVISIONS	DATE APP.