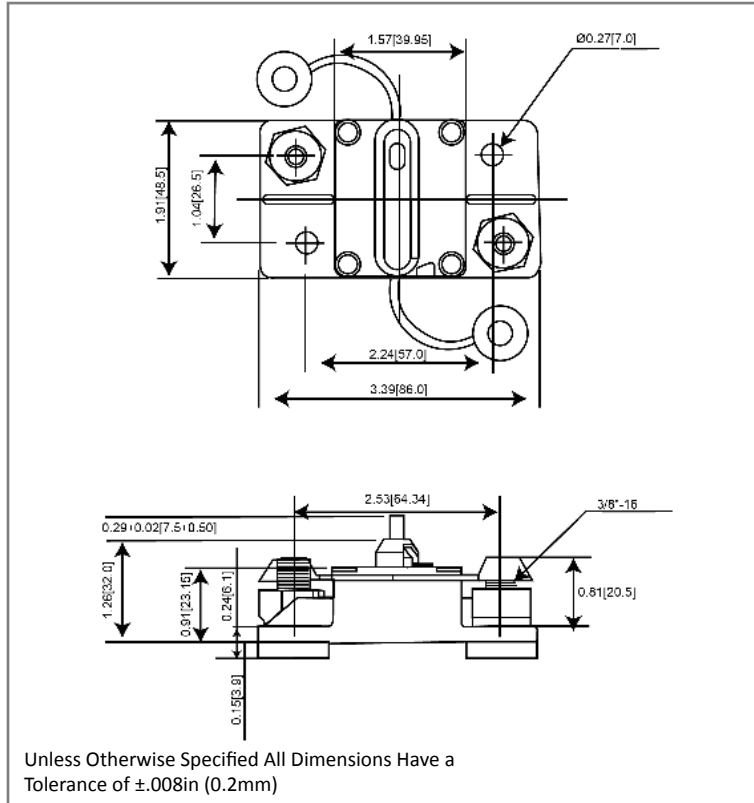


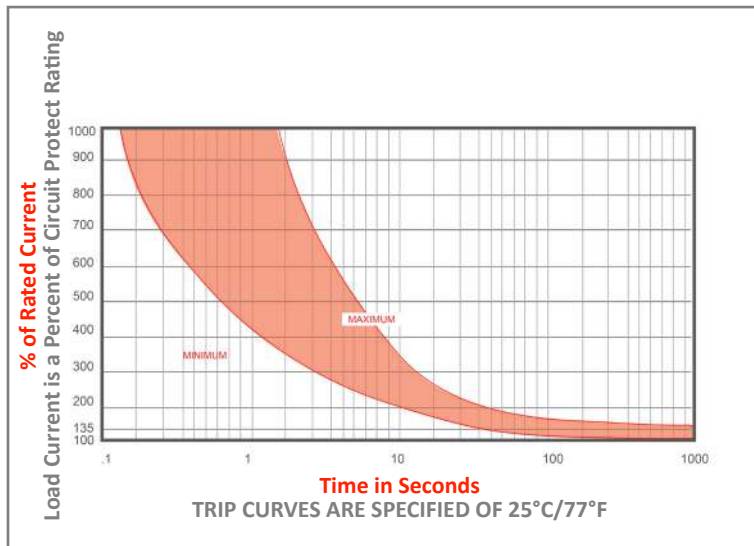
Mechanical Dimensions: Inches [mm]



Part Numbers Information

Optifuse P/N	Current
353025	25A
353030	30A
353040	40A
353050	50A
353060	60A
353070	70A
353080	80A
353090	90A
353100	100A
353120	120A
353135	135A
353140	140A
353150	150A
353175	175A
353200	200A
353250	250A
353300	300A

Time vs. Percent of Rated Current



% of Rated Current	Min Hold Time	Max Hold Time
100%	No Trip (≥ 30 Minutes)	
135%	50s	30m
200%	12s	45s
300%	3.5s	15s

Trip time: Ambient temperature $25^{\circ}\text{C} \pm 3^{\circ}\text{C}$

Electrical Specifications

Voltage Rating	48VDC
Reset Type	Type III - Manual Reset
Interrupting Rating	3000A @ 30VDC (25A-150A), 1500A @ 30VDC (175A-300A)
Operation Temperature	$-25^{\circ}\text{F} \sim 180^{\circ}\text{F} \mid -32^{\circ}\text{C} \sim 82^{\circ}\text{C}$
Testing	SAE J1625, ABYC-E11, UL1077

Material Specifications

Heavy Duty High Amp - Waterproof Circuit Breaker	
Body Material	Thermoset Plastic (UL94V-0)
Terminals Configuration	3/8"-16 Stud
Mounting Type	Surface Mount
Ignition Protected	SAE J1171
Ingress Protection	IP67



Rev	Date of issue	Revision Notes	Designed	Approved
B	06-29-2023	Format Update	RC	OF