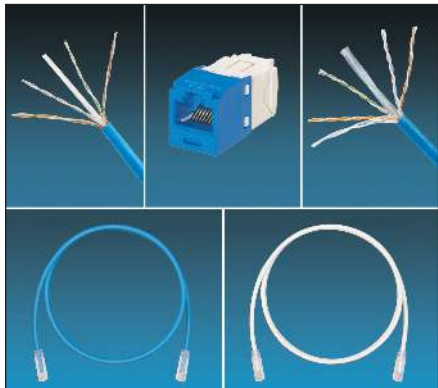


# Category 6 UTP Copper Cabling System Selection Guide

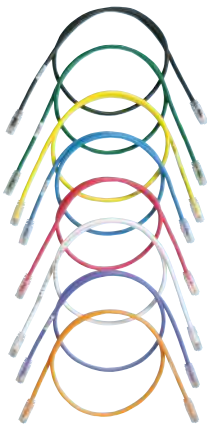


## System requirements:

- Category 6 Copper Cabling Systems provides headroom assurance that exceed requirements of ANSI/TIA-568-C.2 Category 6, and ISO 11801 Class E channel standards
- Jack modules are 100% tested to ensure NEXT and RL performance and are individually serialized for traceability; utilize patent-pending enhanced Giga-TX™ Technology for jack terminations; optimizes performance by maintaining cable pair geometry and eliminating conductor untwist
- Patch cords are 100% performance tested and wired T568B; constructed of 24 or 28 AWG stranded, UTP copper cable and modular plugs for superior performance; nominal cable diameter is 0.235 in (6.0mm) for 24 AWG and 0.150 in (3.8mm) for 28 AWG
- Modular patch panels accept all Mini-Com® Modules; angled patch panels facilitate proper bend radius control and minimize the need for horizontal cable managers



CJ688TGIW



CPPA48HDWBLY



CPP48HDEWBL

Part Number	Part Description	Std. Pkg. Qty.	Std. Ctn. Qty.
<b>Jack Module</b>			
CJ688TGIW*	Category 6 Mini-Com® TX6™ PLUS UTP Jack Module.	1	10
<b>Keyed Jack Module</b>			
CJK688TGBU	Category 6 Mini-Com® TX6™ PLUS UTP, Keyed, Jack Module.	1	10
<b>Right Angle Jack Module</b>			
CJR688TG**	Category 6 Mini-Com® TX6™ Plus UTP Right Angle Jack Module.	1	10
<b>Shuttered Jack Module</b>			
CJH688TG**	Category 6 Mini-Com® TX6™ Plus UTP Shuttered Jack Module.	1	10
<b>28/30AWG Jack Module</b>			
CJT688TG**	Category 6 Mini-Com® TX6™ Plus UTP 28/30AWG Jack Module.	1	10
<b>Corrosive Resistant Jack Module</b>			
CJE688TG**	Category 6 Mini-Com® TX6™ Plus UTP Corrosive Resistant Jack Module.	1	10
<b>UTP Patch Cord</b>			
UTPSP**Y	Category 6, 24 AWG UTP patch cord with TX6™ Modular Plugs on each end.	1	10
<b>28 AWG UTP Patch Cord</b>			
UTP28SP**	Category 6, 28 AWG, UTP patch cord with TX6™ Modular Plugs on each end.	1	10
<b>Keyed UTP Patch Cord</b>			
UTPKSP**	Category 6, 24 AWG keyed, UTP patch cord with TX6™ PLUS Keyed Modular Plug on one end and TX6™ PLUS Non-Keyed Modular Plug on the other end.	1	10
<b>Angled Modular Patch Panels</b>			
CPPA48HDWBLY	48-port, angled, modular patch panel with rear mounted faceplates. 1 RU.	1	10
CPPA24FMWBLY	24-port, angled, flush mount patch panel supplied with rear mounted faceplates. 1 RU.	1	10
CPPA48HDEWBL	48-port, angled, high density modular patch panel with enhanced labeling features. 1 RU.	1	10
CPPA48FMWBLY	48-port, angled, flush mount patch panel supplied with rear mounted faceplates. 2 RU	1	10
<b>Flat Modular Patch Panels</b>			
CPP48HDWBLY	48-port, high density modular patch panel with rear mounted faceplates. 1 RU.	1	10
CPP24FMWBLY	24-port flush mount patch panel supplied with rear mounted faceplates. 1 RU.	1	10
CPP48HDEWBL	48-port, high density modular patch panel with enhanced labeling features. 1 RU.	1	10
CPP48FMWBLY	48-port flush mount patch panel supplied with rear mounted faceplates. 2 RU.	1	10

\*Contact Customer Service or visit [www.panduit.com](http://www.panduit.com) for available standard module colors and/or patch cord colors and lengths.

^One rack space = 1.75" (44.45mm).

# Category 6 UTP Copper Cabling System Selection Guide



Part Number*	Part Description	Flammability Rating	Color	Length	Region Availability
<b>TX6500™ Premium Category 6 U/UTP Copper Cable</b>					
<b>PUP6504BU-UY</b>	Category 6 premium, plenum (CMP), 4-pair, U/UTP copper cable. Conductors are 23 AWG construction with FEP insulation, twisted in pairs, separated by an integrated pair divider and protected by a low smoke, flame-retardant PVC (CMP) jacket.	CMP	Blue	1,000 ft./ 305m	North America
<b>PUR6504BU-UY</b>	Category 6 premium, riser, (CMR), 4-pair, U/UTP copper cable. Conductors are 23 AWG construction with polyolefin insulation, twisted in pairs, separated by an integrated pair divider and protected by a flame-retardant PVC (CMR) jacket.	CMR	Blue	1,000 ft./ 305m	North America

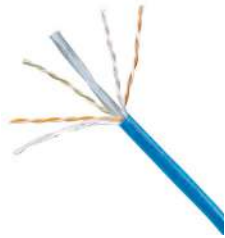


<b>TX6000™ Enhanced Category 6 U/UTP Copper Cable</b>					
<b>PUP6004BU-W</b>	Category 6 enhanced, plenum (CMP), 4-pair U/UTP copper cable. Conductors are 23 AWG construction with FEP/polyolefin insulation, twisted in pairs, separated by an integrated pair divider and protected by a low smoke, flame-retardant PVC (CMP) jacket.	CMP	Blue	1,000 ft./ 305m	North America
<b>PUR6004BU-W</b>	Category 6 enhanced, plenum (CMR), 4-pair U/UTP copper cable. Conductors are 23 AWG construction with FEP/polyolefin insulation, twisted in pairs, separated by an integrated pair divider, and protected by a flame-retardant PVC (CMR) jacket.	CMP	Blue	1,000 ft./ 305m	North America
<b>PUL6004WH-FE</b>	Category 6 enhanced, low smoke zero halogen, (LSZH-1), 4-pair U/UTP copper cable. Conductors are 23 AWG construction with polyethylene insulation, twisted in pairs, separated by an integrated pair divider and protected by a flame-retardant (LSZH-1) jacket.	LSZH-1	White	1,000 ft./ 305m	Latin America, Asia Pacific
<b>PUL6004WH-KE</b>	Category 6 enhanced, low smoke zero halogen (LSZH-1) 4-pair copper cable. Conductors are 23 AWG construction with polyethylene insulation, twisted in pairs, separated by an integrated pair divider and protected by a flame-retardant (LSZH-1) jacket.	LSZH-1	White	1,000 ft./ 305m	EMEA
<b>PUZ6004WH-CEG</b>	Category 6 enhanced, low smoke zero halogen (LSZH-3), 4-pair U/UTP copper cable. Conductors are 23 AWG construction with polyethylene insulation, twisted in pairs, separated by an integrated pair divider, and protected by a flame-retardant (LSZH-3) jacket.	LSZH-3	White	1,000 ft./ 305m	Latin America, Asia Pacific, EMEA
<b>PUC6004BU-FE</b>	Category 6 enhanced, (CM), 4-pair U/UTP copper cable. Conductors are 23 AWG construction with polyolefin insulation, twisted in pairs, separated by an integrated pair divider, and protected by a flame-retardant PVC (CM) jacket.	CM	Blue	1,000 ft./ 305m	Latin America, Asia Pacific, EMEA
<b>PUR6004BU-FE</b>	Category 6, riser (CMR), 4-pair, U/UTP copper cable. Conductors are 23 AWG construction with polyolefin insulation, twisted in pairs, separated by an integrated pair divider, and protected by a flame-retardant PVC (CMR) jacket.	CMR	Blue	1,000 ft. / 305m	Latin America, Asia Pacific

\*Contact Customer Service for region availability and other cable colors.

(continued on next page)

# Category 6 UTP Copper Cabling System Selection Guide



Part Number*	Part Description	Flammability Rating	Color	Length	Region Availability
<b>TX6™ Category 6 U/UTP Copper Cable</b>					
PUP6C04BU-U	Category 6, plenum (CMP), 4-pair, U/UTP copper cable. Conductors are 23 AWG construction with FEP/polyolefin insulation, twisted in pairs, separated by a tape, and protected by a low smoke, flame-retardant PVC (CMP) jacket.	CMP	Blue	1,000 ft./ 305m	North America
PUR6C04BU-U	Category 6, riser (CMR), 4-pair, U/UTP copper cable. Conductors are 23 AWG construction with polyolefin insulation, twisted in pairs, separated by a tape, and protected by a flame-retardant PVC (CMR) jacket.	CMR	Blue	1,000 ft./ 305m	North America
PUL6C04WH-CE	Category 6 enhanced, low smoke zero halogen (LSZH-1), 4-pair U/UTP copper cable. Conductors are 24 AWG construction with polyethylene insulation, twisted in pairs, separated by an integrated pair divider, and protected by a flame-retardant (LSZH-1) jacket.	LSZH-1	White	1,000 ft. / 305m	Latin America, Asia Pacific
PUL6C04WH-KE	Category 6 enhanced, low smoke zero halogen (LSZH-1), 4-pair U/UTP copper cable. Conductors are 24 AWG construction with polyethylene insulation, twisted in pairs, separated by an integrated pair divider, and protected by a flame-retardant (LSZH-1) jacket.	LSZH-1	White	1,000 ft./ 305m	EMEA
PUC6C04BU-CE	Category 6 enhanced, (CM), 4-pair U/UTP copper cable. Conductors are 24 AWG construction with polyolefin insulation, twisted in pairs, separated by an integrated pair divider, and protected by a flame-retardant PVC (CM) jacket.	CM	Blue	1,000 ft./ 305m	Latin America, Asia Pacific, EMEA
PUR6C04BU-C	Category 6, Riser (CMR), 4-pair, U/UTP copper cable. Conductors are 24 AWG construction with polyolefin insulation, twisted in pairs, separated by a tape, and protected by a flame-retardant PVC (CMR) jacket.	CMR	Blue	1,000 ft./ 305m	Latin America, Asia Pacific



<b>TX6-28™ Category 6 28 AWG U/UTP Copper Cable</b>					
PUP6C2804BU-U	Category 6, plenum (CMP), 4-pair, U/UTP copper cable. Conductors are 28 AWG construction with FEP/polyolefin insulation, twisted in pairs, separated by an integrated pair divider, and protected by a low smoke, flame-retardant PVC (CMP) jacket	CMP	Blue	1,000 ft./ 305m	North America
PUR6C2804BU-U	Category 6, riser (CMR), 4-pair, U/UTP copper cable. Conductors are 28 AWG construction with polyolefin insulation, twisted in pairs, separated by an integrated pair divider, and protected by a flame-retardant PVC (CMR) jacket.	CMR	Blue	1,000 ft./ 305m	North America
PUD6C2804BU-CE	Category 6, low smoke zero halogen (LSZH-1, LSZH-3) and (CM), 4-pair, U/UTP copper cable. Conductors are 28 AWG construction with polyethylene insulation, twisted in pairs and protected by a flame-retardant (LSZH-1, LSZH-3, CM) jacket.	LSZH-1 LSZH-3 CM	Blue	1,000 ft./ 305m	Latin America, Asia Pacific, EMEA

\*Contact Customer Service for region availability and other cable colors.

## WORLDWIDE SUBSIDIARIES AND SALES OFFICES

PANDUIT CANADA  
Markham, Ontario  
cs-cdn@panduit.com  
Phone: 800.777.3300

PANDUIT EUROPE LTD.  
London, UK  
cs-emea@panduit.com  
Phone: 44.20.8601.7200

PANDUIT SINGAPORE PTE. LTD.  
Republic of Singapore  
cs-ap@panduit.com  
Phone: 65.6305.7575

PANDUIT JAPAN  
Tokyo, Japan  
cs-japan@panduit.com  
Phone: 81.3.6863.6000

PANDUIT LATIN AMERICA  
Guadalajara, Mexico  
cs-la@panduit.com  
Phone: 52.33.3777.6000

PANDUIT AUSTRALIA PTY. LTD.  
Victoria, Australia  
cs-aus@panduit.com  
Phone: 61.3.9794.9020

For a copy of Panduit product warranties, log on to [www.panduit.com/warranty](http://www.panduit.com/warranty)

For more information

Visit us at [www.panduit.com](http://www.panduit.com)

Contact Customer Service by email: [cs@panduit.com](mailto:cs@panduit.com)  
or by phone: 800-777-3300

©2017 Panduit Corp.  
ALL RIGHTS RESERVED.  
COSG13--WW-ENG  
1/2017